

Paper weight-110# (minimum)

Black nonfading ink required

# U.S. PUBLIC LAND SURVEY MONUMENT RECORD

For Public Land Survey Corners In:

WI ADMINISTRATIVE CODE A-E 7.08 REQUIREMENT

T. 4 N. R. 11 E. 4th P.M.

REV 10/23/2004

USMONREC.DWG

### CORNER CODE INDEX

	1	2	3	4	5	6	7	8	9	10	11	12	13	14	15	16	17	18	19	20	21	22	23	24	25		
A																											A
B																											B
C																											C
D																											D
E																											E
F																											F
G																											G
H																											H
J																											J
K																											K
L																											L
M																											M
N																											N
O																											O
P																											P
Q																											Q
R																											R
S																											S
T																											T
U																											U
V																											V
W																											W
X																											X
Y																											Y
Z																											Z

PORTER TWP

ROCK COUNTY WI

IF AVAILABLE  
ROCK COUNTY COORDINATES PREFERRED

North \_\_\_\_\_ Elev. \_\_\_\_\_

East \_\_\_\_\_

Hor. Datum \_\_\_\_\_ Vert. Datum \_\_\_\_\_

LATITUDE \_\_\_\_\_ ELLIPS. HT. \_\_\_\_\_

LONGITUDE \_\_\_\_\_

NAD83(91) \_\_\_\_\_ NETWORK ADJ. YR \_\_\_\_\_

GPS (X) \_\_\_\_\_ TRAVERSE (X) \_\_\_\_\_

BASED ON THE FOLLOWING CONTROL:

PLACE MONUMENT SYMBOL  AT PROPER LOCATION ON ABOVE INDEX

CORNER MONUMENT

WITNESS MONUMENT

BEARINGS ARE BASED ON: \_\_\_\_\_

FIELD BOOK \_\_\_\_\_ PAGE # \_\_\_\_\_

SHEET 1 OF 3

SHOW A PLAN VIEW DRAWING DEPICTING THE CORNER MONUMENT AND SURROUNDING PHYSICAL FEATURES, INCLUDING THE EXCAVATION AREA AND DEPTH.

PLANNING & ZONING COMMITTEE ADOPTED THIS FORM ON 12/2/1982

CORNER CODE A-71(2)

P0506

N1/4CORSEC4

(B) Describe any record evidence, monument evidence, occupational evidence, testimonial evidence or any other material evidence you considered, and whether the monument was found or placed.

1833 (SEP) BRINK & MULLETT T5N R11E WEST ON SOUTH SIDE  
SECTION 33

396.0 LEAVE MARSH AND ENTER PRAIRIE  
2640.0 SET QUARTER SECTION POST IN PRAIRIE AND MADE  
MOUND  
3399.0 LEAVE PRAIRIE  
5280 SET POST CORNER SECTIONS 32 & 33 BUR OAK  
18 N19E 64.02'; BUR OAK 11 N47W 84.48'  
LAND ROLLING SECOND RATE PRAIRIE & CROSSING

1874 RUGER VOL 2 PG 129 ESTABLISHED THE CORNER FROM NE &  
NW SECTION CORNERS. SET HH 26X13X7 & PUT LIMESTONE  
ON EAST & HH ON WEST. CALLS FOR CORNER TO BE 68.31'  
EAST OF THE S 1/4 CORNER, 2569.82' TO THE CENTER OF  
SECTION 4, & 1302.84 TO THE N 1/16TH CORNER OF THE NE  
1/4 AND THE N 1/16TH CORNER OF THE NW 1/4 OF SECTION  
4. BY THE VARIANCE (VAR 8-23) HE CALLS FOR THE CORNER  
TO BE ON A STRAIGHT LINE BETWEEN THE NE & NW  
CORNERS OF SECTION 4.

1973 LEE VOL 5 PG 45 DUG AND FOUND HH WITH FLAT LIMESTONE  
STANDING ON E & W 1' DEEP. REFERENCED SAME. FD HH  
24X9X8 & REFERENCED N 1/16TH COR OF NE 1/4 SEC 4., FD  
FD DUG & FD NOTHING. SET COR & REFERENCED.

1979 KARNES CSM 9 PG 123 STATES NOTHING ABOUT MON.  
EASTERLY 1145.96 TO POB

1985 WEIR A-11 I FOUND THE R/R SPIKE & 2 REMAINING TIES AT  
THE N 1/4 CORNER OF SECTION 4, T4N R11E, AS TIED BY H.  
LEE AND SHOWN ON HIS ROCK COUNTY TIE SHEET IN VOL 5,  
P 4 DATED APRIL 3, 1973. I SET ADDITIONAL TIE POINTS AS  
SHOWN. DANE COUNTY ROAD RECORDS INDICATE THAT Mc  
GINNIS ROAD IS CENTERED ON THE N/S 1/4 LINE OF  
SECTION 33, T5N R11E. I USED AN EXTENSION OF THE LINE  
FROM THE NORTHEAST CORNER OF SECTION 4, T4N, R11E  
THROUGH THE NORTH 1/4 CORNER OF SAID SECTION 4 TO  
THE INTERSECTION WITH THE CENTERLINE OF Mc GINNIS  
ROAD TO ESTABLISH THE SOUTH 1/4 CORNER OF SAID  
SECTION 33. STATES THE S 1/4 CORNER OF SECTION 33 (1"  
IRON PIPE) T5N R11E IS 71.10 WEST.

1993 BARNES A-11(1) COUNTY COORDIANATES OF 328,706.68;  
445,464.50. FD R/R 0.3 DEEP @ N 1/4 COR SEC 4 &  
PINCHED PIPE @ S 1/4 COR SEC 33. REFERENCED SAME.  
WEST 71.05 TO S 1/4 COR SEC 33. COR IS 3.3' NORTH OF  
CENTER OF PVMT.

1994 NORTHROP CSM 17 PG 370 FD R/R 2648.87 FROM S 1/4  
COR SEC 33 TO SE COR SEC 33. 71.10 EAST OF S 1/4 COR  
SEC 33.

2006 LATHROP CSM 31-3 5186.05 TO SPIKE NAIL @ S 1/4 COR  
SEC 6

2007 COMBS CSM VOL 31 PG 194 FD PK 2602.16 TO FD IP @ NE  
COR SEC 4.

FD MAG. NAIL @ N 1/4 COR SEC 4 & REFERENCE MONUMENTS. THE  
MAG. NAIL & FD PERPETUATED S 1/16TH CORNERS ARE ALL WITHIN  
A 0.1' OF A LINE BETWEEN THE NE & NW CORNERS OF SEC 4.

C) Was the corner restored through acceptance of (1) an obliterated evidence location, or, (2) a found  
perpetuated location?

ACCEPTED FD MAG NAIL, WHICH IS IN HARMONY WITH THE  
REFERENCE MONUMENTS. DID NOT ACCEPT NOR REJECT THE PIPE  
@ THE S 1/4 COR OF SEC 33 T5N R11E.

*D. M. Barnes*  
*May 26, 2008*

SHEET 1 OF 3  
CORNER CODE A-11(2)

P0506

D) Describe any material discrepancy between the location of the corner as restored or reestablished and the location of that corner as previously restored or reestablished by distance and direction. Show the discrepancy on the plan view drawing under (a), above. Show the distances between the corner as previously restored or reestablished and (1) the corner as restored or reestablished, and (2) to at least 4 of the witness monuments shown on the drawing in (a), above.

THE MAG NAIL PERPETUATES THE CORNER AS MONUMENTED BY RUGER. I DID NOT ACCEPT THE PIPE @ THE S 1/4 COR OF SEC 33, BECAUSE WEIR (1985) DID NOT EXCAVATE FOR THE CORNER AND USED THE N/S CENTER OF Mc GINNIS ROAD TO ESTABLISH THE E/W POSITION. RUGER (1874) CALLS FOR THE N 1/4 COR OF SEC 4 AS 68.31' EAST OF THE S 1/4 COR SEC 33. BASED ON THIS DISTANCE THE S 1/4 COR OF SEC 33 IS PROBABLY 2.74' EAST OF THE PIPE. THE S 1/4 COR OF SEC 33 SHOULD BE EXCAVATED FOR BY DANE COUNTY.

(E) Was the corner reestablished through lost corner proportionate methods? If so, show the method, including the directions and distances to other public land survey corners used as evidence or used for proportioning the corner location.

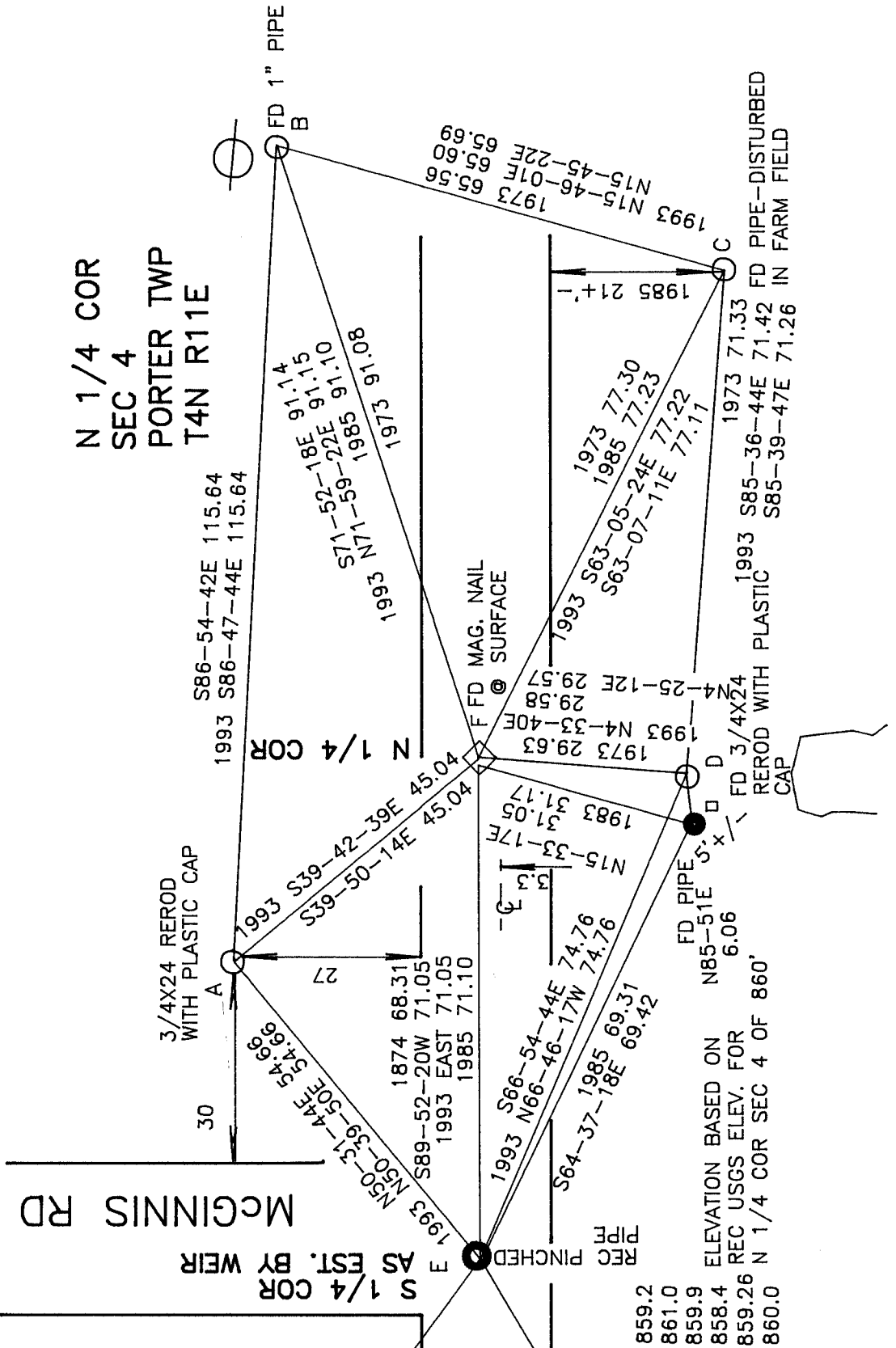
NO

I, **Donald Barnes**, hereby certify that the corner location as identified by the corner code index was determined by me under my direction and control and that this U.S. Public Land Survey Monument Record is correct and complete to the best of my knowledge and belief.

Seal  
Donald  
Emboss  
Barnes  
May 26, 2008

SHEET 2 OF 3

CORNER CODE **A-11(2)**



N 1/4 COR  
 SEC 4  
 PORTER TWP  
 T4N R11E

MCGINNIS RD

STEBBINSVILLE

A	859.2
B	861.0
C	859.9
D	858.4
E	859.26
F	860.0

ELEVATION BASED ON  
 REC USGS ELEV. FOR  
 N 1/4 COR SEC 4 OF 860'

*James Barnes*  
 EMBOSSSED SEAL  
 May 26, 2008

SHEET 3 OF 3

A-11(2)