

U.S. PUBLIC LAND SURVEY MONUMENT RECORD

For Public Land Survey Corners in:

WI ADMINISTRATIVE CODE A-E 7.08 REQUIREMENT

T. 2 N., R. 10 E

CORNER CODE INDEX

A	1	2	3	4	5	6	7	8	9	10	11	12	13	14	15	16	17	18	19	20	21	22	23	24	25
B																									
C	6						5			A					3			2						1	
D																									
E																									
F																									
G	7						8	◆	9			10			11			12							
H																									
J																									
K																									
L	18						17			16				15			14							13	
M																									
N																									
O																									
P	19						20			21				22			23							24	
Q																									
R																									
S																									
T	30						29			28				27			26							25	
U																									
V																									
W																									
X	31						32			33				34			35							36	
Y																									
Z																									

SPRING VALLEY TWP

ROCK COUNTY WI

IF AVAILABLE
ROCK COUNTY COORDINATES PREFERRED

North _____ Elev. _____

East _____

Hor. Datum _____ Vert. Datum _____

LATITUDE _____ ELLIPS. HT. _____

LONGITUDE _____

GPS (X) _____ TRAVERSE (X) _____

BASED ON THE FOLLOWING CONTROL:

PLACE MONUMENT SYMBOL ◆ AT PROPER LOCATION ON ABOVE INDEX

◆ CORNER MONUMENT

○ WITNESS MONUMENT

(a)

BEARINGS ARE BASED ON:

FIELD BOOK _____ PAGE # _____

SHEET 1 OF 2

SHOW A PLAN VIEW DRAWING DEPICTING THE CORNER MONUMENT AND SURROUNDING PHYSICAL FEATURES, INCLUDING THE EXCAVATION AREA AND DEPTH.

PLANNING & ZONING COMMITTEE ADOPTED THE ABOVE FORM ON 12/2/1982

CORNER CODE 69

SP536

(B) Describe any record evidence, monument evidence, occupational evidence, testimonial evidence or any other material evidence you considered, and whether the monument was found or placed.

1855 CHURCH VOL 1 PG 44 STATES NOTHING ABOUT MONUMENT. 2588.52 TO CENTER OF SEC 9 & 5177.04 TO E 1/4 COR SEC 9. CENTER ESTABLISHED BY EQUAL DISTANCE METHOD.

1879 RUGER VOL 2 PG 263 FOUND STAKE & STONES AT COR AS SET BY LOCKE. ALSO FOUND WHERE WITNESS TREE STUMPS HAD BEEN DUG UP. 2740.32 VAR 5-57 TO CENTER OF SEC 8. (NOTE AT BOTTOM OF PAGE) LOCKE & CHURCH HAD SUBDIVIDED THIS SECTION UNDER THE STATE LAW FIXING THE CENTER EQUI-DISTANT FROM THE OPPOSITE CORRESPONDING 1/4 CORNERS. I ESTABLISHED THE CENTER AT THE POINT OF INTERSECTION OF RIGHT LINES BETWEEN THE CORRESPONDING QUARTER CORNERS.

1984 BARNES VOL 6 PG 313 DISTANCES TO FOUND HARDHEADS. 2661.84 TO SE COR SEC 8, 2754.76 TO CENTER OF SEC 8, & DISTANCES TO N/S FENCE LINES TO THE EAST.

1984 BARNES G 9 DUG LARGE HOLE & FOUND TWO HARDHEAD STONES SETTING EAST/WEST TO EACH OTHER. DID NOT FIND A STAKE. THESE WERE THE ONLY LARGE STONES THAT WERE IN THE HOLE. SEE COUNTY SURVEYOR'S RECORDS VOL 6 PG 313 FOR BEARINGS AND DISTANCES BETWEEN CORNERS. DID NOT ESTABLISH THE CORNER. ONLY DOCUMENTING THE EVIDENCE THAT WAS FOUND. THE COUNTY HIGHWAY DEPARTMENT REQUESTED THAT WE EXCAVATE PRIOR TO THEM RESURFACING THE ROAD.

FOUND PK AND REFERENCE PIPES

C) Was the corner restored through acceptance of (1) an obliterated evidence location, or, (2) a found perpetuated location?

D) Describe any material discrepancy between the location of the corner as restored or reestablished and the location of that corner as previously restored or reestablished by distance and direction. Show the discrepancy on the plan view drawing under (a), above. Show the distances between the corner as previously restored or reestablished and (1) the corner as restored or reestablished, and (2) to at least 4 of the witness monuments shown on the drawing in (a), above.

(E) Was the corner reestablished through lost corner proportionate methods? If so, show the method, including the directions and distances to other public land survey corners used as evidence or used for proportioning the corner location.

I, Donald Barnes, hereby certify that the corner location as identified by the corner code index was determined by me under by direction and control and that this U.S. Public Land Survey Monument Record is correct and complete to the best of my knowledge and belief.

seal

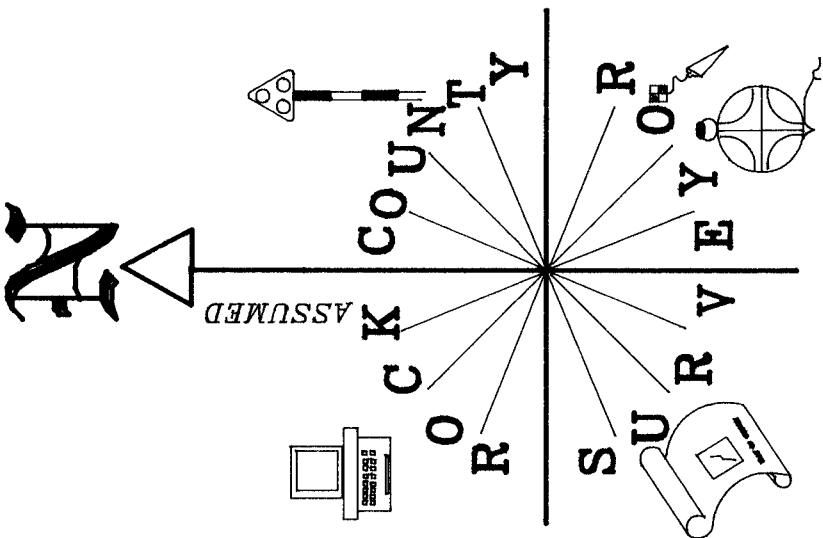
Number of included sheets _____

emboss

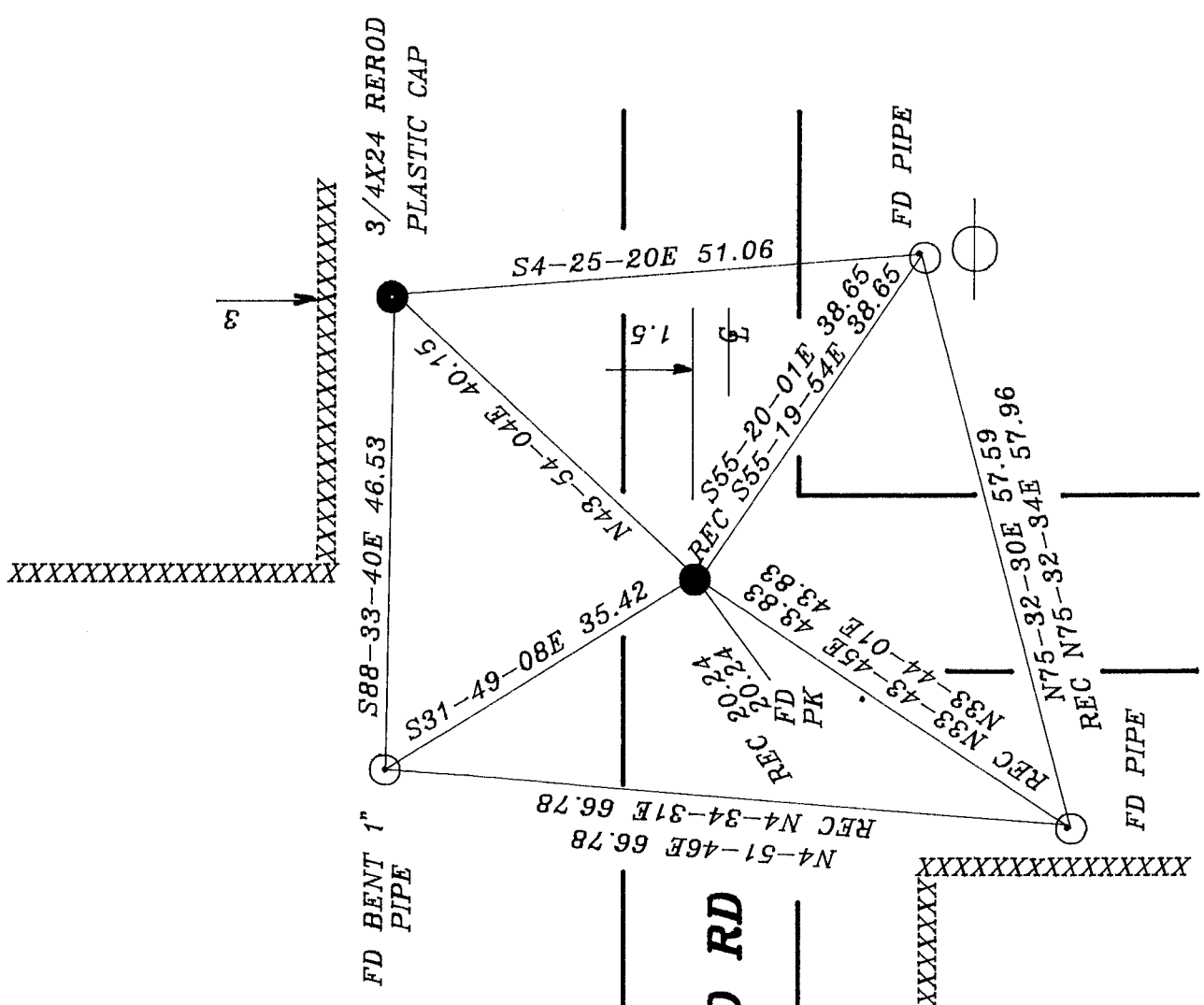
CORNER CODE

Donald Barnes A-E 7.08 REQUIREMENT
6/25/96

G9(1)



Donald Barnes
6/21/96



FOOTVILLE/BRODHEAD RD

E 1/4 COR
SEC 8
T2N R10E
FB #3 PG 56