

U.S. PUBLIC LAND SURVEY MONUMENT RECORD

For Public Land Survey Corners in the

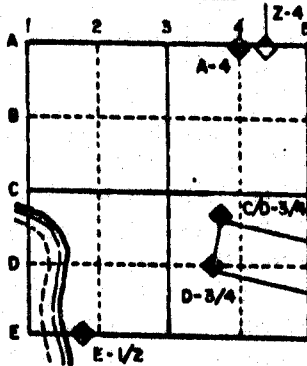
T. 2 N., R. 10 E.

CORNER CODE INDEX

	1	2	3	4	5	6	7	8	9	10	11	12	13	14	15	16	17	18	19	20	21	22	23	24	25
A																									
B																									
C																									
D																									
E																									
F																									
G																									
H																									
I																									
J																									
K																									
L																									
M																									
N																									
O																									
P																									
Q																									
R																									
S																									
T																									
U																									
V																									
W																									
X																									
Y																									
Z																									

PLACE MONUMENT SYMBOL (◆) AT PROPER LOCATION ON ABOVE INDEX

EXAMPLE



SPRING VALLEY TWP
ROCK COUNTY WI

IF AVAILABLE STATE PLANE COORDINATES

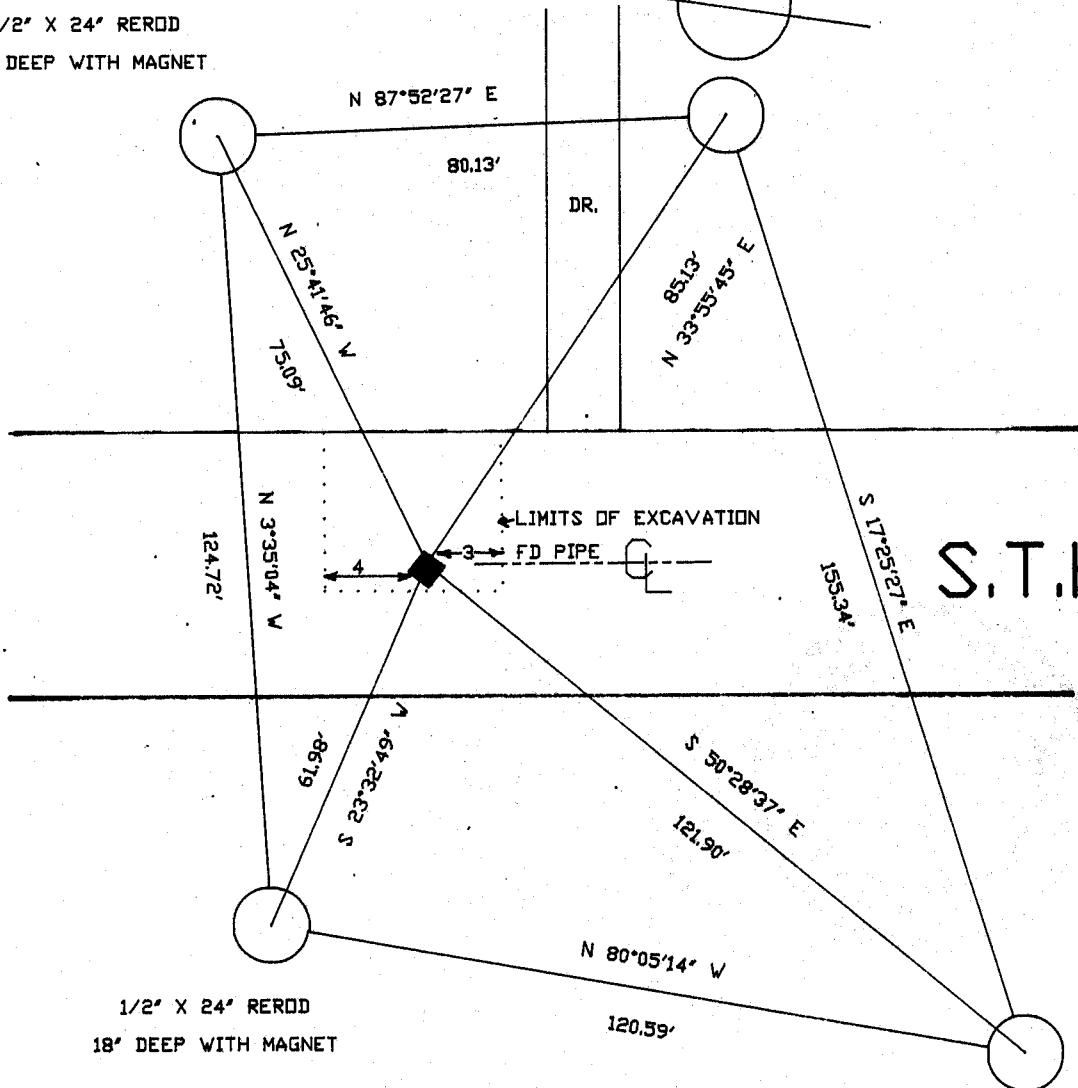
North (Y) _____ Eleve. (Z) _____
 East (X) _____ Zone _____
 Hor. Datum _____ Vert. Datum _____

a.)

◆ CORNER MONUMENT

○ WITNESS MONUMENT

1/2" X 24" REROD
18" DEEP WITH MAGNET



S.T.H. 11

1/2" X 24" REROD
18" DEEP WITH MAGNET

1/2" X 24" REROD
18" DEEP WITH MAGNET

BK 2 pg 72, 67

MICROFILMED

SHEET 1 OF 2

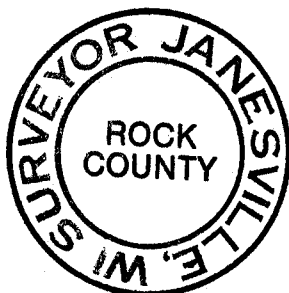
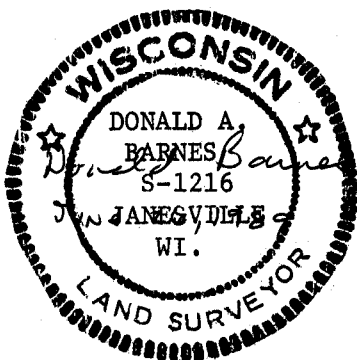
CORNER CODE: NS(1)

(B) Describe any record evidence, monument evidence, occupational evidence, testimonial evidence or any other material evidence you considered, and whether the monument was found or placed.

- 1866 LOCKE VOL 1 PG 255 FOUND BTs SET STAKE. SHOWS A DISTANCE OF 2639.34 TO E 1/4 COR OF SEC 18.
- 1869 LEE VOL 1 PG 352 FOUND BTs AND COR SET BY LOCKE.
- 1879 RUGER VOL 2 PG 253 FOUND COR. EST BY LOCKE. STAKE WITH HH STONE ON S.E. SIDE. SHOWS A DISTANCE OF 1321.16 TO THE 1/16TH CORNER TO THE EAST.
- 1924 ELY VOL 3 PG 130 NOTHING IS STATED ABOUT THE CORNER. CORNER IS JUST REFERENCED.
- 1934 SUNNY VOL 3 PG 254 FOUND PIPE 4.6' NORTH OF CENTER OF CONC. PVMT.. SET BY ELY IN 1924.. RESET SAME WITH 1X30" PIPE. SHOWS DISTANCE OF 2645.0 TO S1/4 COR OF SEC 17, 2620.7 TO S 1/4 COR SEC 18, AND 2640 TO FENCE INTERSECTION AT E 1/4 COR SEC 18.
- 1960 BATTERMAN VOL 4 PG 45 REFERENCED A FOUND 1" PIPE AND STATES THAT CORNER IS 4.6 NORTH OF CENTER OF PVMT.
- 1984 BARNES N-5 FOUND 1" PIPE & REFERENCED SAME. COORDINATES OF 230,137.46;2,175,816.97.
- 1984 BARNES VOL 6 PG 325 FOUND 1" PIPE. SHOWS COORDINATES OF 230,137.50;2,175,817.24. ALSO DISTANCES OF 2623.53 TO N1/4 COR SEC 19 AND 2656.88 TO E 1/4 COR SEC 19.
- 1987 BARNES VOL 6 PG 367 SHOWS A DISTANCE OF 2623.53 & SCHNEIDER'S GRID DISTANCE OF 2623.67 TO S1/4 COR SEC 18, 2641.38 TO E1/4 COR SEC 18, AND AN ANGLE AT THE S1/4 COR SEC 18 OF 180-07-07 & 180-07-13 BY SCHNEIDER.
- 1987 SCHNEIDER VOL 6 PG 367 COORDINATES OF 230,137.47;2,175,817.95

FOUND PIPE 5' NORTH OF CENTER OF PVMT. *FOUND WOOD HUB LAYING HORIZONTALLY BELOW THAT H.H. HH WAS JUST BELOW THE CONCRETE, THERE WERE NO OTHER HHs IN BLACK DIRT*

(c) Was the corner restored through acceptance of (1) an obliterated evidence location, or, (2) a found perpetuated location?



2 OF 2

N 5 (1)