

U.S. PUBLIC LAND SURVEY MONUMENT RECORD

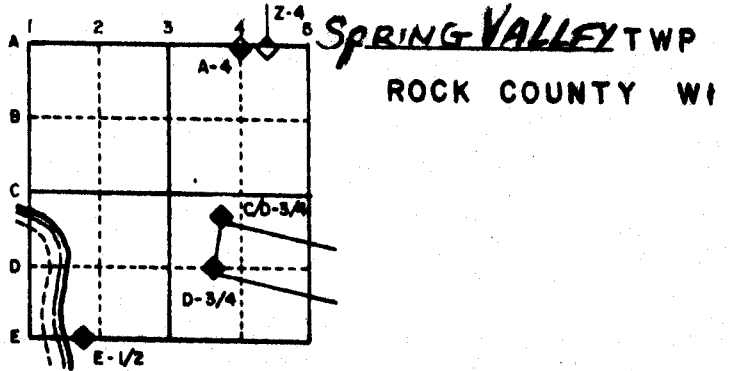
For Public Land Survey Corners in the
T. 2N., R. 10E.

CORNER CODE INDEX

	1	2	3	4	5	6	7	8	9	10	11	12	13	14	15	16	17	18	19	20	21	22	23	24	25
A																									
B																									
C	6																								
D																									
E																									
F																									
G	7																								
H																									
I																									
J																									
K																									
L	18																								
M																									
N																									
O																									
P	19																								
Q																									
R																									
S																									
T	30																								
U																									
V																									
W																									
X	31																								
Y																									
Z																									

PLACE MONUMENT SYMBOL (◆) AT PROPER LOCATION ON ABOVE INDEX

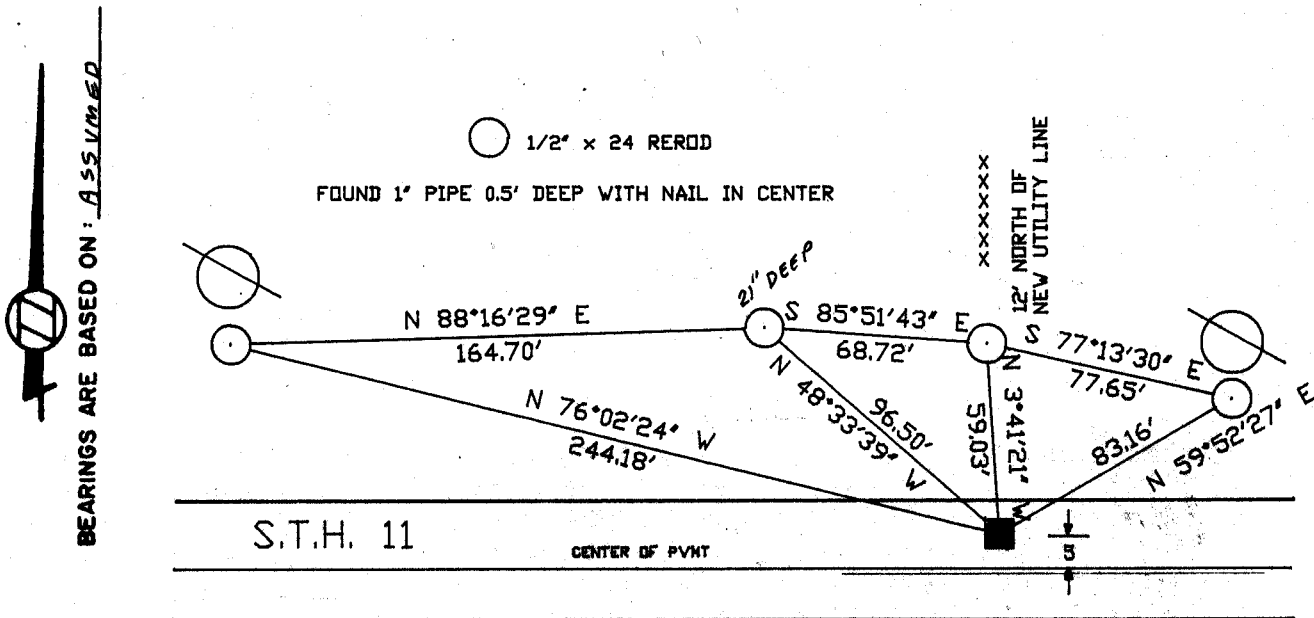
EXAMPLE



IF AVAILABLE
STATE PLANE COORDINATES

North (Y) _____ Eleve. (Z) _____
 East (X) _____ Zone _____
 Hor. Datum _____ Vert. Datum _____

- (a) ◆ CORNER MONUMENT ○ WITNESS MONUMENT



FIELD BOOK 2 PAGE # 71, 73

MICROFILMED

SHOW A PLAN VIEW DRAWING DEPICTING THE CORNER MONUMENT AND SURROUNDING PHYSICAL FEATURES, INCLUDING THE EXCAVATION AREA AND DEPTH. THE CORNER MONUMENT SHALL HAVE THE FOLLOWING CHARACTERISTICS: 1) HAVE AT LEAST TWO PREDETERMINED BREAK-OFF POINTS. 2) IF BROKEN, LEAVE A PERMANENTLY MAGNETIZED REMNANT AT THE ORIGINAL POINT. 3) MUST BE EXTENDABLE. 4) THE CAP IS INSCRIBED: ROCK COUNTY SURVEY MONUMENT - PENALTY FOR DISTURBING MARKER. 5) OR AN EXISTING CUT LIMESTONE. AN IRON PIPE 1 1/2" x 4" (MINIMUM) MAY BE USED IN AREAS WHERE GROUND WATER IS WITHIN ONE FOOT OF THE SURFACE. IF THE CORNER IS OCCUPIED BY AN IMPROVEMENT (MANHOLE, BURIED CABLE, ETC.) ANY DURABLE, DISTINCT MONUMENT MAY BE USED. CORNERS SHALL BE REFERENCED WITH AT LEAST 4 DURABLE WITNESS MONUMENTS. WITNESS MONUMENTS SHALL BE MADE OF CONCRETE, NATURAL STONE, IRON OR OTHER EQUALLY DURABLE MATERIAL, EXCEPT WOOD. DESCRIBE THE CORNER AND THE WITNESS MONUMENTS.

CORNER CODE:

N 7(1)

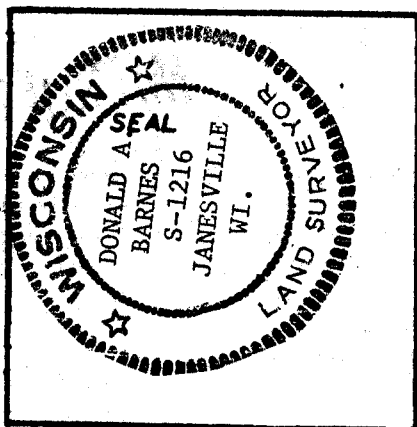
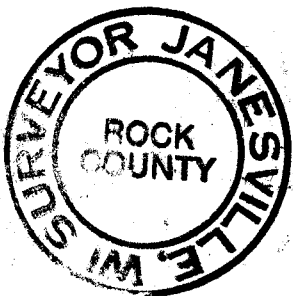
(b.) Describe any record evidence, monument evidence, occupational evidence, testimonial evidence or any other material evidence you considered, and whether the monument was found or placed.

(c.) Was the corner restored through acceptance of (1) an obliterated evidence location, or, (2) a found perpetuated location?

(d.) Describe any material discrepancy between the location of the corner as restored or reestablished and the location of that corner as previously restored or reestablished by distance and direction. Show the discrepancy on the plan view drawing under (a), above. Show the distances between the corner as previously restored or reestablished and (1) the corner as restored or reestablished, and (2) to at least 4 of the witness monuments shown on the drawing in (a), above.

(e.) Was the corner reestablished through lost corner proportionate methods? If so, show the method, including the directions and distances to other public land survey corners used as evidence or used for proportioning in determining the corner location.

I, Donald Barnes, hereby certify that the corner points as identified by the corner code index were, in a field survey on June 26 1989, established, re-established, monumented, re-monumented, recovered or restored as expressed below and in conformance with the regulations and rules as required in the current manual of survey instructions of the United States Department of Interior, Bureau of Land Management.



COUNTY SURVEYOR FILING DATA

Date of Computer Entry _____

Date Received _____

Date Microfilmed _____

Treasurer's Receipt No. _____

Number of Included Sheets 1

AFFIX YOUR LAND SURVEYOR SEAL.

CORNER CODE N-70

(B) Describe any record evidence, monument evidence, occupational evidence, testimonial evidence of any other material evidence you considered, and whether the monument was found or placed.

1879 RUGER VOL 2 PG 253 FOUND STUMPS OF BTs DROVE STAKE & SURROUNDED IT WITH 3 HH STONES & LIMESTONE. SHOWS A DISTANCE OF 1321.16 TO THE 1/16th CORNER TO THE WEST. USED CORNER TO SUBDIVIDE SECTION 17.

1934 SUNNY VOL 3 PG 264 SET 1X36" IRON PIPE 5.1' N OF CENTER PVMT. DOES NOT STATE THE METHOD THAT HE USED. SHOWS A DISTANCE OF 2645.0 TO THE SW CORNER OF SEC 17, 2646.5 TO THE FENCE AT THE CENTER OF SECTION 17, AND 2646.5 TO THE FENCE AT THE CENTER OF SECTION 20.

1934 SUNNY VOL 3 PG 255 SHOWS CORNER BUT STATES ONLY DISTANCE OF 2646.5 TO FENCE INT TO THE NORTH, 2645.5 TO FENCE INT. TO THE SOUTH, & 2552.6 TO SE CORNER OF SECTION 17.

1960 BATTERMAN VOL 4 PG 45 FOUND PIPE. REFERENCED SAME AND SHOWS THAT THE CORNER 5' NORTH OF THE CENTER OF PAVEMENT

1970 BATTERMAN VOL 4 PG 478 RESET 1 REF MON. & RECHAINED. SHOWS CORNER 5' NORTH OF CENTERLINE.

1982 DOT FOUND 1" IRON PIPE WITH COORDINATES OF 230,144.18;2,178,463.67.

1987 SCHNEIDER VOL 6 PG 371 SHOWS COORDINATES OF 230,144.18;2,178,463.67.

FOUND 1" PIPE WITH NAIL IN CENTER. PIPE IS 5' NORTH OF CENTER OF PVMT. ON THE SOUTH SIDE OF ROAD THERE IS LARGE CUT AND ON THE NORTH SIDE THERE IS NATURAL GROUND. *PID NOT REDIG FOR CORNER*

(C) Was the corner restored through acceptance of (1) an obliterated location, or, (2) a found perpetuated location?

