

U.S. PUBLIC LAND SURVEY MONUMENT RECORD

For Public Land Survey Corners In:
T. 2 N. R. 13 E. 4th P.M.

WI ADMINISTRATIVE CODE A-E 7.08 REQUIREMENT
REV 10/23/2004 USMONREC.DWG

CORNER CODE INDEX

LA PRAIRIE TWP

ROCK COUNTY WI

IF AVAILABLE
ROCK COUNTY COORDINATES PREFERRED

| | | | | | | | | | | | | | | | | | | | | | | | | | |
|---|---|---|---|---|---|---|---|---|----|----|----|----|----|----|----|----|----|----|----|----|----|----|----|----|---|
| A | 2 | 3 | 4 | 5 | 6 | 7 | 8 | 9 | 10 | 11 | 12 | 13 | 14 | 15 | 16 | 17 | 18 | 19 | 20 | 21 | 22 | 23 | 24 | 25 | A |
| B | | 6 | | | | 5 | | | | 4 | | | | 3 | | | 2 | | | 1 | | | | | B |
| C | | | | | | | | | | | | | | | | | | | | | | | | | C |
| D | | | | | | | | | | | | | | | | | | | | | | | | | D |
| E | | | | | | | | | | | | | | | | | | | | | | | | | E |
| F | | | | | | | | | | | | | | | | | | | | | | | | | F |
| G | | | | | | | | | | | | | | | | | | | | | | | | | G |
| H | | | | | | | | | | | | | | | | | | | | | | | | | H |
| J | | | | | | | | | | | | | | | | | | | | | | | | | J |
| K | | | | | | | | | | | | | | | | | | | | | | | | | K |
| L | | | | | | | | | | | | | | | | | | | | | | | | | L |
| M | | | | | | | | | | | | | | | | | | | | | | | | | M |
| N | | | | | | | | | | | | | | | | | | | | | | | | | N |
| O | | | | | | | | | | | | | | | | | | | | | | | | | O |
| P | | | | | | | | | | | | | | | | | | | | | | | | | P |
| Q | | | | | | | | | | | | | | | | | | | | | | | | | Q |
| R | | | | | | | | | | | | | | | | | | | | | | | | | R |
| S | | | | | | | | | | | | | | | | | | | | | | | | | S |
| T | | | | | | | | | | | | | | | | | | | | | | | | | T |
| U | | | | | | | | | | | | | | | | | | | | | | | | | U |
| V | | | | | | | | | | | | | | | | | | | | | | | | | V |
| W | | | | | | | | | | | | | | | | | | | | | | | | | W |
| X | | | | | | | | | | | | | | | | | | | | | | | | | X |
| Y | | | | | | | | | | | | | | | | | | | | | | | | | Y |
| Z | | | | | | | | | | | | | | | | | | | | | | | | | Z |

North _____ Elev. _____

East _____

Hor. Datum _____ Vert. Datum _____

LATITUDE _____ ELLIPS. HT. _____

LONGITUDE _____

NAD83(91) _____ NETWORK ADJ. YR _____

GPS (X) _____ TRAVERSE (X) _____

BASED ON THE FOLLOWING CONTROL:

PLACE MONUMENT SYMBOL AT PROPER LOCATION ON ABOVE INDEX

CORNER MONUMENT

WITNESS MONUMENT

(a)

BEARINGS ARE BASED ON: _____

FIELD BOOK _____ PAGE # _____

SHEET 1 OF 3

SHOW A PLAN VIEW DRAWING DEPICTING THE CORNER MONUMENT AND SURROUNDING PHYSICAL FEATURES, INCLUDING THE EXCAVATION AREA AND DEPTH.

PLANNING & ZONING COMMITTEE ADOPTED THIS FORM ON 12/2/1982

CORNER CODE X-9(3)

LA616

(B) Describe any record evidence, monument evidence, occupational evidence, testimonial evidence or any other material evidence you considered, and whether the monument was found or placed.

1939 SUNNY VOL 3 PG 450 FD 6X6 STONE MON. SET 1 1/2 X7
CAPPED PIPE ON TOP. REFERENCED SAME.

1985 BARNES X-9 FB #2 PG 67 FD PIPE & CUT L.S. 1.0' DEEP. SET
POLY MON ON TOP. REFERENCED SAME.

1990 BARNES X-9(1) FB#3 PG 60 FD POLY @ CENTER OF PVMT.

FD PK PRIOR TO GRINDING & REFERENCED SAME. AFTER
REPAVING I SET A DURA-NAIL IN THE PVMT SURFACE.

POLY & LS ARE STILL BELOW THE PVMT.

C) Was the corner restored through acceptance of (1) an obliterated evidence location, or, (2) a found perpetuated location?

THE DURA-NAIL IS IN HARMONY WITH THE FD REFERENCE PIPES.

D) Describe any material discrepancy between the location of the corner as restored or reestablished and the location of that corner as previously restored or reestablished by distance and direction. Show the discrepancy on the plan view drawing under (a), above. Show the distances between the corner as previously restored or reestablished and (1) the corner as restored or reestablished, and (2) to at least 4 of the witness monuments shown on the drawing in (a), above.

YES.

(E) Was the corner reestablished through lost corner proportionate methods? If so, show the method, including the directions and distances to other public land survey corners used as evidence or used for proportioning the corner location.

I, **Donald Barnes**, hereby certify that the corner location as identified by the corner code index was determined by me under my direction and control and that this U.S. Public Land Survey Monument Record is correct and complete to the best of my knowledge and belief.

Seal

Donald Barnes
Emboss

OCT 3 2006

SHEET 1 OF 3

CORNER CODE

X-9(3)

A.E. 7.08 REQUIREMENT

U.S. PUBLIC LAND SURVEY MONUMENT RECORD

For Public Land Survey Corners In:
T. 2 N. R. 13 E. 4th P.M.

WI ADMINISTRATIVE CODE A-E 7.08 REQUIREMENT
REV 10/23/2004 USMONREC.DWG

CORNER CODE INDEX

| | | | | | | | | | | | | | | | | | | | | | | | | | | | |
|---|---|---|---|---|---|---|---|---|---|----|----|----|----|----|----|----|----|----|----|----|----|----|----|----|----|--|---|
| | 1 | 2 | 3 | 4 | 5 | 6 | 7 | 8 | 9 | 10 | 11 | 12 | 13 | 14 | 15 | 16 | 17 | 18 | 19 | 20 | 21 | 22 | 23 | 24 | 25 | | |
| A | | | | | | | | | | | | | | | | | | | | | | | | | | | A |
| B | | | | | | | | | | | | | | | | | | | | | | | | | | | B |
| C | | | | | | | | | | | | | | | | | | | | | | | | | | | C |
| D | | | | | | | | | | | | | | | | | | | | | | | | | | | D |
| E | | | | | | | | | | | | | | | | | | | | | | | | | | | E |
| F | | | | | | | | | | | | | | | | | | | | | | | | | | | F |
| G | | | | | | | | | | | | | | | | | | | | | | | | | | | G |
| H | | | | | | | | | | | | | | | | | | | | | | | | | | | H |
| J | | | | | | | | | | | | | | | | | | | | | | | | | | | J |
| K | | | | | | | | | | | | | | | | | | | | | | | | | | | K |
| L | | | | | | | | | | | | | | | | | | | | | | | | | | | L |
| M | | | | | | | | | | | | | | | | | | | | | | | | | | | M |
| N | | | | | | | | | | | | | | | | | | | | | | | | | | | N |
| O | | | | | | | | | | | | | | | | | | | | | | | | | | | O |
| P | | | | | | | | | | | | | | | | | | | | | | | | | | | P |
| Q | | | | | | | | | | | | | | | | | | | | | | | | | | | Q |
| R | | | | | | | | | | | | | | | | | | | | | | | | | | | R |
| S | | | | | | | | | | | | | | | | | | | | | | | | | | | S |
| T | | | | | | | | | | | | | | | | | | | | | | | | | | | T |
| U | | | | | | | | | | | | | | | | | | | | | | | | | | | U |
| V | | | | | | | | | | | | | | | | | | | | | | | | | | | V |
| W | | | | | | | | | | | | | | | | | | | | | | | | | | | W |
| X | | | | | | | | | | | | | | | | | | | | | | | | | | | X |
| Y | | | | | | | | | | | | | | | | | | | | | | | | | | | Y |
| Z | | | | | | | | | | | | | | | | | | | | | | | | | | | Z |

LA PRAIRIE TWP
ROCK COUNTY WI

IF AVAILABLE
ROCK COUNTY COORDINATES PREFERRED

North _____ Elev. _____

East _____

Hor. Datum _____ Vert. Datum _____

LATITUDE _____ ELLIPS. HT. _____

LONGITUDE _____

NAD83(91) _____ NETWORK ADJ. YR _____

GPS (X) _____ TRAVERSE (X) _____

BASED ON THE FOLLOWING CONTROL:

PLACE MONUMENT SYMBOL AT PROPER LOCATION ON ABOVE INDEX

CORNER MONUMENT WITNESS MONUMENT

BEARINGS ARE BASED ON:

IN JULY 2006 CTH "J"s ASPHALT SURFACE WAS REMOVED BY A GRINDING PROCESS. IN SEPTEMBER 2006 IT WAS RESURFACED WITH ASPHALT. FROM THE TIES I PLACED EITHER A 3" STEEL SURVEY MARKER SPIKE OR A 3" DURANAIL FROM THE TIES. THE MONUMENTS OF RECORD ARE STILL BELOW THE PAVMENT.

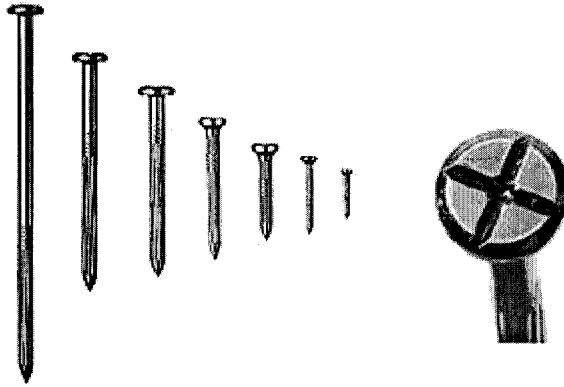
FIELD BOOK _____ PAGE # _____ SHEET 2 OF 3

SHOW A PLAN VIEW DRAWING DEPICTING THE CORNER MONUMENT AND SURROUNDING PHYSICAL FEATURES, INCLUDING THE EXCAVATION AREA AND DEPTH.

PLANNING & ZONING COMMITTEE ADOPTED THIS FORM ON 12/2/1982

CORNER CODE X-9(3)

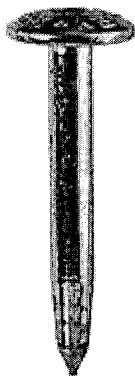
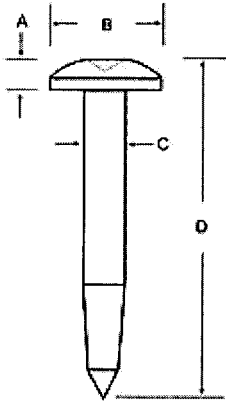
DuraNail
Exclusively From Berntsen



DuraNail

This steel nail will not bend or break and will drive into the asphalt with ease. Not like other nails, it has a deep cross on its larger head along with a center punch. This magnetic nail comes in a variety of lengths. You will receive The Magnetizer with each bag of nails, which will realign the magnetic field after installation to make your DuraNail more detectable

Steel Nail Markers



- A = 3/16" (5 mm)
- B = 1" (25 mm)
- C = 11/32" (9 mm)
- D = 3" (76 mm)

The Steel Nail Marker is super strong solid steel and drives easily into blacktop. "SURVEY MARK" is imprinted on top of nail for easy identification as a survey mark. The SNM1 has a 1" (25mm) convex top and conical recessed center chamfer for pinpoint accuracy.

Donald Barnes
OCT 3 2006

2 OF 3

X-9(3)

ELEV 99.55
 1990 SET REROD WITH
 ○ ORANGE PLASTIC CAP

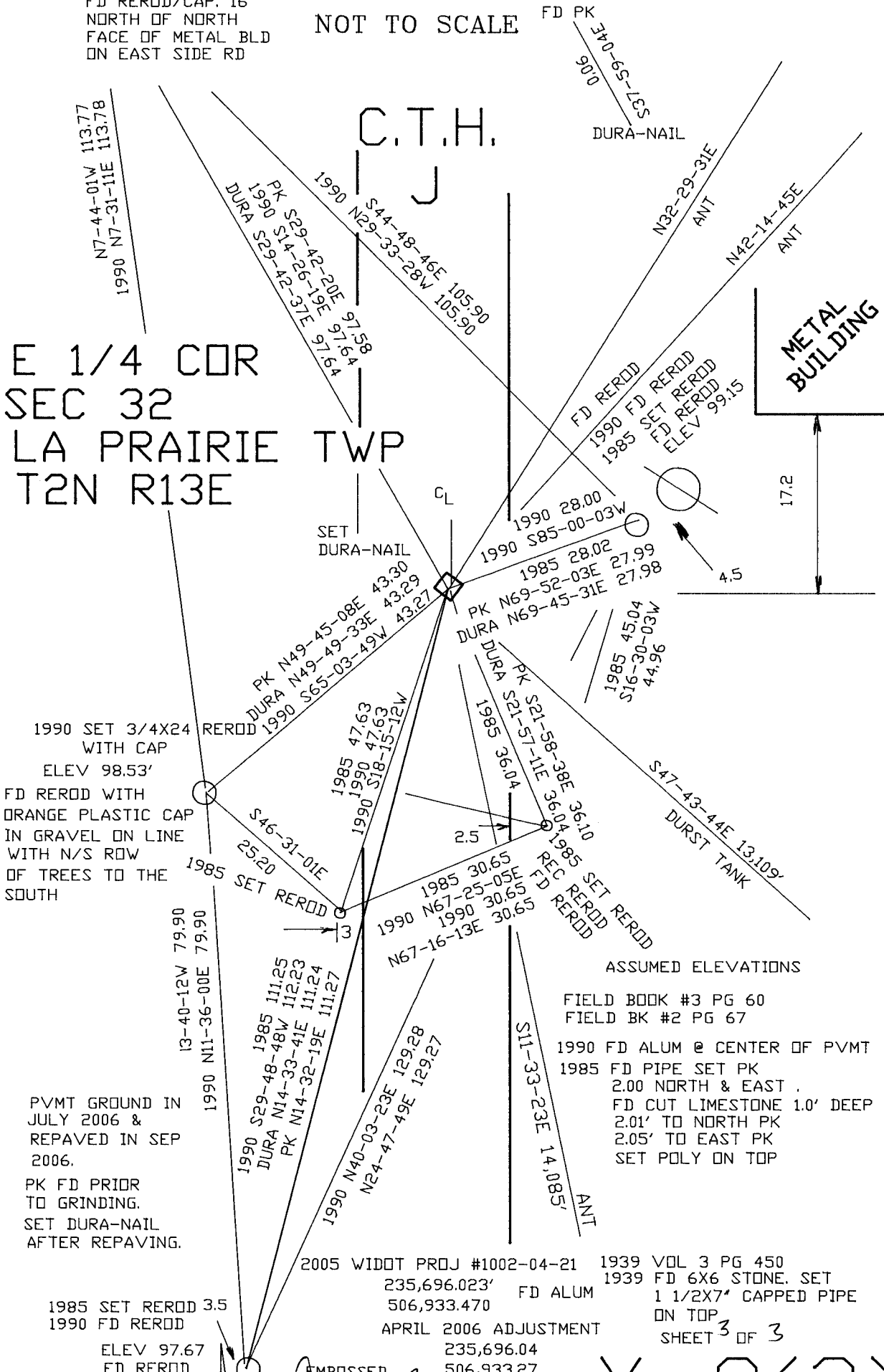
FD REROD/CAP, 16'
 NORTH OF NORTH
 FACE OF METAL BLD
 ON EAST SIDE RD

NOT TO SCALE

C.T.H.

E 1/4 COR
 SEC 32
 LA PRAIRIE TWP
 T2N R13E

METAL
 BUILDING



ASSUMED ELEVATIONS

- FIELD BOOK #3 PG 60
- FIELD BK #2 PG 67
- 1990 FD ALUM @ CENTER OF PVMT
- 1985 FD PIPE SET PK
- 2.00 NORTH & EAST
- FD CUT LIMESTONE 1.0' DEEP
- 2.01' TO NORTH PK
- 2.05' TO EAST PK
- SET POLY ON TOP

1990 SET 3/4X24
 WITH CAP
 ELEV 98.53'
 FD REROD WITH
 ORANGE PLASTIC CAP
 IN GRAVEL ON LINE
 WITH N/S ROW
 OF TREES TO THE
 SOUTH

PVMT GROUND IN
 JULY 2006 &
 REPAVED IN SEP
 2006.
 PK FD PRIOR
 TO GRINDING.
 SET DURA-NAIL
 AFTER REPAVING.

1985 SET REROD 3.5
 1990 FD REROD
 ELEV 97.67
 FD REROD

2005 WIDOT PROJ #1002-04-21
 235,696.023' FD ALUM
 506,933.470
 APRIL 2006 ADJUSTMENT
 235,696.04
 506,933.27

1939 VOL 3 PG 450
 1939 FD 6X6 STONE. SET
 1 1/2X7' CAPPED PIPE
 ON TOP
 SHEET 3 OF 3

EMBOSSSED
 SEAL
Donna Barnes
 OCT 3 2006

X-9(3)