

Paper weight-110# (minimum)

Black nonfading ink required

U.S. PUBLIC LAND SURVEY MONUMENT RECORD

For Public Land Survey Corners In:
T. 2 N. R. 10 E. 4th P.M.
CORNER CODE INDEX

WI ADMINISTRATIVE CODE A-E 7.08 REQUIREMENT
REV 10/23/2004 USMONREC.DWG

SPRING VALLEY TWP
ROCK COUNTY WI

IF AVAILABLE
ROCK COUNTY COORDINATES PREFERRED

North _____ Elev. _____

East _____

Hor. Datum _____ Vert. Datum _____

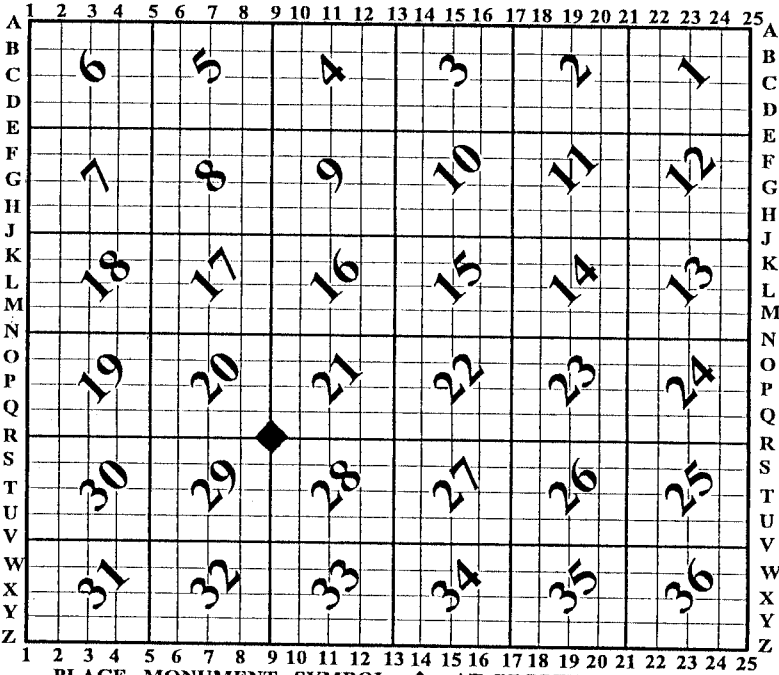
LATITUDE _____ ELLIPS. HT. _____

LONGITUDE _____

NAD83(91) _____ NETWORK ADJ. YR _____

GPS (X) _____ TRAVERSE (X) _____

BASED ON THE FOLLOWING CONTROL:



PLACE MONUMENT SYMBOL AT PROPER LOCATION ON ABOVE INDEX

CORNER MONUMENT

WITNESS MONUMENT

(a)

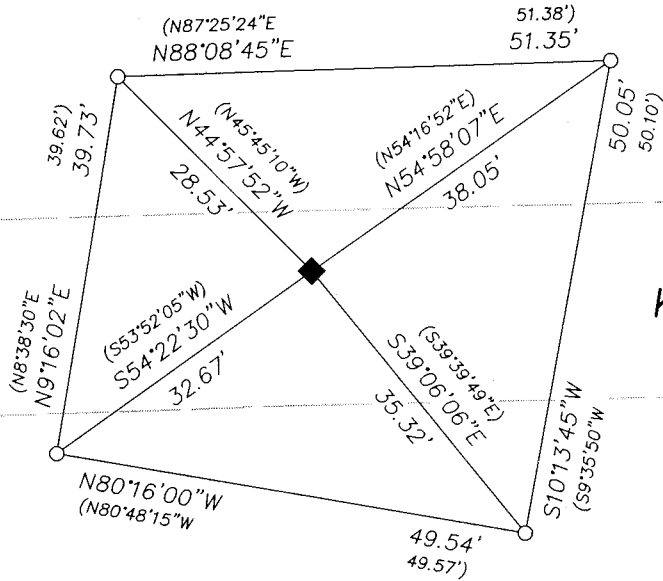
BEARINGS ARE BASED ON: ROCK COUNTY COORDINATE SYSTEM 2007 ADJUSTMENT

Todd E. Plante
4-20-2011

LEGEND:

- 3/4" solid round iron rod found.
- 3/4" X 24" solid round iron rod set, weighing 1.50 lbs per lineal ft.

WEST
E/P
E/P



KEESEY ROAD

SCALE: 1" = 20'

GRAPHIC BAR SCALE:



NOTE:

Bearings and distances shown in parenthesis, indicates recorded as data.

FIELD BOOK _____ PAGE # _____

SHEET 1 OF 2

SHOW A PLAN VIEW DRAWING DEPICTING THE CORNER MONUMENT AND SURROUNDING PHYSICAL FEATURES, INCLUDING THE EXCAVATION AREA AND DEPTH.

PLANNING & ZONING COMMITTEE ADOPTED THIS FORM ON 12/2/1982

CORNER CODE R-9(2)

(B) Describe any record evidence, monument evidence, occupational evidence, testimonial evidence or any other material evidence you considered, and whether the monument was found or placed.

This corner location was previously established by County Surveyor Donald Barnes on May 8th, 1992. At that time County Surveyor Barnes said he set a 3/4" x 24" solid round iron rod 3' deep with a magnet. I did have a faint reading of County Surveyor Barnes iron, but I was not going to dig the road up to tie into the iron being 3' below the pavement. I located the (4) witness ties as shown and computed the current location. I used a gas powered hammer drill and set a 3/4" x 24" solid round iron rod at the computed location flush with the existing pavement.

C) Was the corner restored through acceptance of (1) an obliterated evidence location, or, (2) a found perpetuated location?

A found perpetuated location based on (4) ties found as shown on a Monument Tie Sheet, prepared by County Surveyor Donald Barnes, Dated May 8th, 1992.

D) Describe any material discrepancy between the location of the corner as restored or reestablished and the location of that corner as previously restored or reestablished by distance and direction. Show the discrepancy on the plan view drawing under (a), above. Show the distances between the corner as previously restored or reestablished and (1) the corner as restored or reestablished, and (2) to at least 4 of the witness monuments shown on the drawing in (a), above.

(E) Was the corner reestablished through lost corner proportionate methods? If so, show the method, including the directions and distances to other public land survey corners used as evidence or used for proportioning the corner location.

I, **TODD E. HASSE**, hereby certify that the corner location as identified by the corner code index was determined by me under my direction and control and that this U.S. Public Land Survey Monument Record is correct and complete to the best of my knowledge and belief.

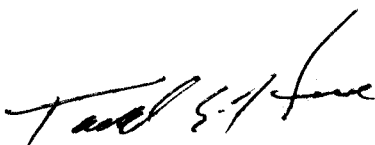
Seal

Emboss

SHEET 2 OF 2

CORNER CODE R-9(2)

A.E. 7.08 REQUIREMENT



4-20-2011