

U.S. PUBLIC LAND SURVEY MONUMENT RECORD

For Public Land Survey Corners in:

WI ADMINISTRATIVE CODE A-E 7.08 REQUIREMENT

T. 2 N., R. 10 E

CORNER CODE INDEX

A	1	2	3	4	5	6	7	8	9	10	11	12	13	14	15	16	17	18	19	20	21	22	23	24	25
B																									
C	6					5				4					3					2					1
D																									
E																									
F																									
G	1					8				9					10					11				12	
H																									
I																									
J																									
K																									
L	18					17				16					15					14				13	
M																									
N																									
O																									
P	19					20				21					22					23				24	
Q																									
R																									
S																									
T	30					29				28					27					26				25	
U																									
V																									
W																									
X	31					32				33					34					35				36	
Y																									
Z																									

SPRING VALLEY TWP

ROCK COUNTY WI

IF AVAILABLE
ROCK COUNTY COORDINATES PREFERRED

North _____ Elev. _____

East _____

Hor. Datum _____ Vert. Datum _____

LATITUDE _____ ELLIPS. HT. _____

LONGITUDE _____

GPS (X) _____ TRAVERSE (X) _____

BASED ON THE FOLLOWING CONTROL:

PLACE MONUMENT SYMBOL AT PROPER LOCATION ON ABOVE INDEX

CORNER MONUMENT

WITNESS MONUMENT

(a)

BEARINGS ARE BASED ON:

FIELD BOOK _____ PAGE # _____

SHEET 1 OF 2

SHOW A PLAN VIEW DRAWING DEPICTING THE CORNER MONUMENT AND SURROUNDING PHYSICAL FEATURES, INCLUDING THE EXCAVATION AREA AND DEPTH.

PLANNING & ZONING COMMITTEE ADOPTED THE ABOVE FORM ON 12/2/1982

CORNER CODE A 17(2)

SP509

(B) Describe any record evidence, monument evidence, occupational evidence, testimonial evidence or any other material evidence you considered, and whether the monument was found or placed.

- 1834 MILLER ORIG SET POST CORNER SECTION 34 & 35. BUR OAK 12 N22W 99
WHITE OAK 14 N62E 215.16
- 1834 MILLER ORIGINAL FIELD NOTES. INTERSECTED NORTH BOUNDARY 9.9
EAST OF POST. SET POST IN MOUND CORNER OF SECTION 2 & 3.
- 1858 CHURCH VOL 6 PG 390 2601.72 FROM NW TO N ¼ COR SEC 2.
- 1881 LEE VOL 2 PG 335 (AT SW COR SEC 35 MAGNOLIA TWP) FOUND OLD STAKE NEAR
CENTER OF ROAD & 9.9 W OF LINE OF FENCE TO SOUTH SET A LIMESTONE 16X6X6
POINT UP. COULD NOT FIND NW COR SEC 2. SHOWS 2632.74 TO S 1/4
CORNER OF SECTION 35. SHOWS THAT THE S 1/4 CORNER OF
SECTION 35 IS ON A STRAIGHT LINE AND MID WAY BETWEEN THE SW
AND SE CORNERS OF SECTION 35.
- 1929 BATTERMAN VOL 3 PG 159 SHOWS NE CORNER OF SECTION 3 10' FROM EDGE OF
CONCRETE PAVEMENT. STATES THAT THE NE CORNER OF SECTION 3 WAS
DISTURBED. 1967 NOTE STATES THAT A R/R WAS PLACED AT THE NE CORNER OF
SECTION 3. REFERENCED THE NE CORNER OF SECTION 3. TIES SHOW THAT THE NE
CORNER OF SECTION 3 IS 9.8' EAST OF THE CENTER OF THE PAVEMENT & A 1X24"
PIPE WAS SET.
- 1967 BATTERMAN JR. VOL 4 PG 336 CORNER GONE. SEE VOL 3 PG 145. NE CORNER OF
SECTION 3 RESET R/R FROM VOL 3 PG 176. SHOWS SW COR SEC 35 IN STH 213.
- 1988 BARNES VOL 6 PG 391. SHOWS THE FOLLOWING JOG DISTANCES: LEE 1881 9.90'
ORIGINAL 9.90' ALSO SHOWS THAT THE CORNER IS WEST OF THE SPRING VALLEY
CORNER.
- 1988 BARNES VOL 6 PG 390 SHOWS JOG DISTANCES.
- 1985 DOT A-17 1" IRON PIPE. ESTABLISHED REFERENCE MONUMENTS.
- 1988 BARNES A-17(1) FD 2" PIPE. SET PK WEST 0.99, PK NORTH 1.00, & REFERENCE PIPES.

AT NE COR SEC 3 FOUND PK TO THE NORTH & PK HOLE WITH INDENTATION OF PK HEAD
TO THE WEST. PAVEMENT IS BEING REMOVED FOR STH 213 PROJECT. DID NOT DIG FOR
LEE'S 1881 LIMESTONE BECAUSE THERE WAS A SEVERE CUT AT SW INTERSECTION, CUT
AT NW INTERSECTION, FILL AT NE & SE INTERSECTION. LOOKS LIKE MONUMENT WAS
CUT OUT BY OLD ROAD CONSTRUCTION.

C) Was the corner restored through acceptance of (1) an obliterated evidence location, or, (2) a found
perpetuated location?

ACCEPTED FOUND PERPETUATED LOCATION.

D) Describe any material discrepancy between the location of the corner as restored or reestablished and the
location of that corner as previously restored or reestablished by distance and direction. Show the discrepancy
on the plan view drawing under (a), above. Show the distances between the corner as previously restored or
reestablished and (1) the corner as restored or reestablished, and (2) to at least 4 of the witness monuments
shown on the drawing in (a), above.

(E) Was the corner reestablished through lost corner proportionate methods? If so, show the method, including
the directions and distances to other public land survey corners used as evidence or used for proportioning the
corner location.

I, Donald Barnes, hereby certify that the corner location as identified by the corner code index was
determined by me under my direction and control and that this U.S. Public Land Survey Monument Record
is correct and complete to the best of my knowledge and belief.

Seal

Number of included sheets 1

Emboss
Donald Barnes
May 15, 00

A-E 7.08 REQUIREMENT

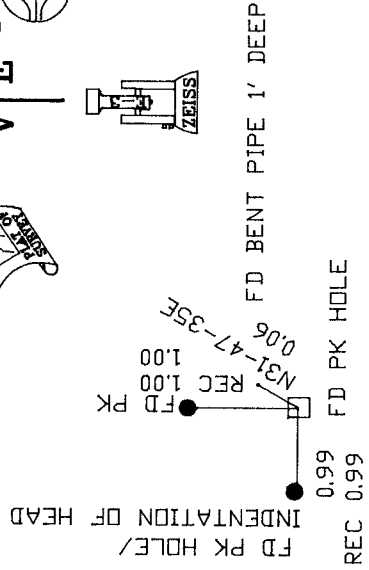
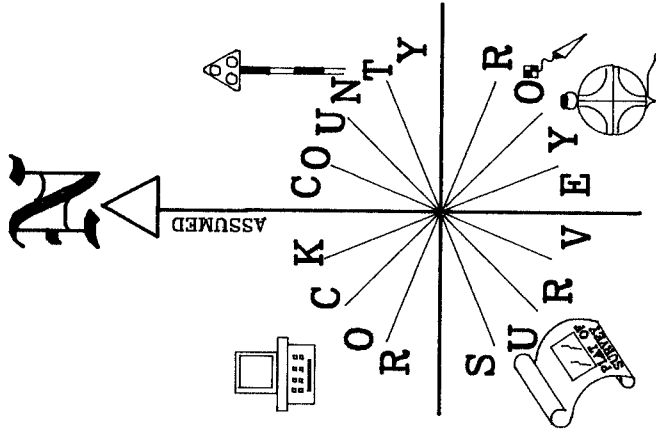
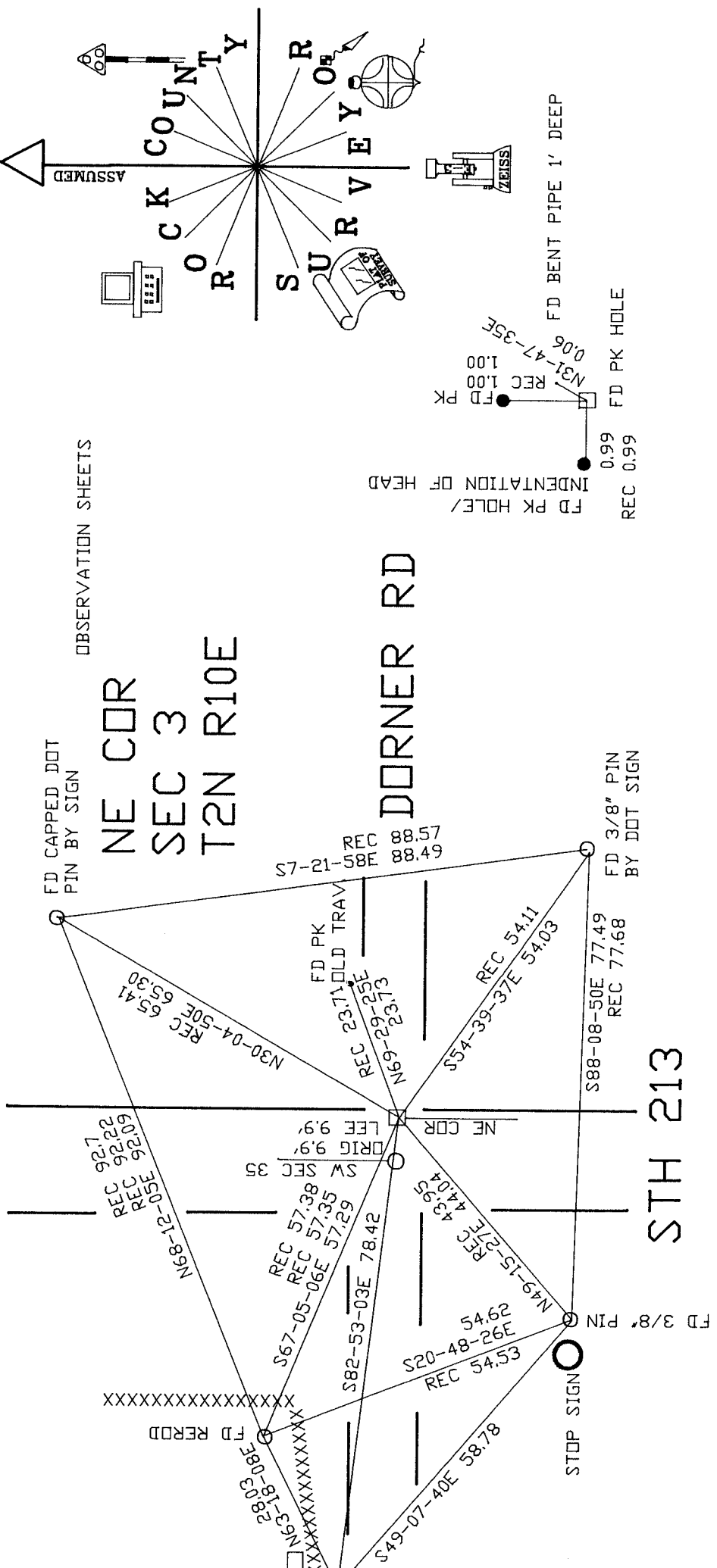
CORNER CODE A-17(2)

Donald Barnes
 May 15, 2000

EMBOSSSED
 SEAL

ANTIQUE
 SIGN

PLACED 3/4X24
 CAPPED RERD



A-17(2)