

Paper weight-110# (minimum)

Black nonfading ink required

U.S. PUBLIC LAND SURVEY MONUMENT RECORD

For Public Land Survey Corners In:

WI ADMINISTRATIVE CODE A-E 7.08 REQUIREMENT

T. 2 N. R. 13 E. 4th P.M.

REV 10/23/2004

USMONREC.DWG

CORNER CODE INDEX

LA PRAIRIE TWP

ROCK COUNTY WI

IF AVAILABLE

ROCK COUNTY COORDINATES PREFERRED

| | | | | | | | | | | | | | | | | | | | | | | | | | | |
|---|----|---|---|---|---|---|----|---|---|----|----|----|----|----|----|----|----|----|----|----|----|----|----|----|----|---|
| A | 1 | 2 | 3 | 4 | 5 | 6 | 7 | 8 | 9 | 10 | 11 | 12 | 13 | 14 | 15 | 16 | 17 | 18 | 19 | 20 | 21 | 22 | 23 | 24 | 25 | A |
| B | | | | | | | | | | | | | | | | | | | | | | | | | | B |
| C | 6 | | | | | | 5 | | | | | 4 | | | | 3 | | | | 2 | | | | 1 | | C |
| D | | | | | | | | | | | | | | | | | | | | | | | | | | D |
| E | | | | | | | | | | | | | | | | | | | | | | | | | | E |
| F | | | | | | | | | | | | | | | | | | | | | | | | | | F |
| G | 7 | | | | | | 8 | | | | | 9 | | | | 10 | | | | 11 | | | | 12 | | G |
| H | | | | | | | | | | | | | | | | | | | | | | | | | | H |
| J | | | | | | | | | | | | | | | | | | | | | | | | | | J |
| K | 18 | | | | | | 17 | | | | | 16 | | | | 15 | | | | 14 | | | | 13 | | K |
| L | | | | | | | | | | | | | | | | | | | | | | | | | | L |
| M | | | | | | | | | | | | | | | | | | | | | | | | | | M |
| N | | | | | | | | | | | | | | | | | | | | | | | | | | N |
| O | | | | | | | | | | | | | | | | | | | | | | | | | | O |
| P | 19 | | | | | | 20 | | | | | 21 | | | | 22 | | | | 23 | | | | 24 | | P |
| Q | | | | | | | | | | | | | | | | | | | | | | | | | | Q |
| R | | | | | | | | | | | | | | | | | | | | | | | | | | R |
| S | | | | | | | | | | | | | | | | | | | | | | | | | | S |
| T | 30 | | | | | | 29 | | | | | 28 | | | | 27 | | | | 26 | | | | 25 | | T |
| U | | | | | | | | | | | | | | | | | | | | | | | | | | U |
| V | | | | | | | | | | | | | | | | | | | | | | | | | | V |
| W | | | | | | | | | | | | | | | | | | | | | | | | | | W |
| X | 31 | | | | | | 32 | | | | | 33 | | | | 34 | | | | 35 | | | | 36 | | X |
| Y | | | | | | | | | | | | | | | | | | | | | | | | | | Y |
| Z | | | | | | | | | | | | | | | | | | | | | | | | | | Z |

North _____ Elev. _____

East _____

Hor. Datum _____ Vert. Datum _____

LATITUDE _____ ELLIPS. HT. _____

LONGITUDE _____

NAD83(91) _____ NETWORK ADJ. YR _____

GPS (X) _____ TRAVERSE (X) _____

BASED ON THE FOLLOWING CONTROL:

PLACE MONUMENT SYMBOL AT PROPER LOCATION ON ABOVE INDEX

CORNER MONUMENT

WITNESS MONUMENT

(a)

BEARINGS ARE BASED ON:

FIELD BOOK _____ PAGE # _____

SHEET 1 OF 2

SHOW A PLAN VIEW DRAWING DEPICTING THE CORNER MONUMENT AND SURROUNDING PHYSICAL FEATURES, INCLUDING THE EXCAVATION AREA AND DEPTH.

PLANNING & ZONING COMMITTEE ADOPTED THIS FORM ON 12/2/1982

CORNER CODE C-13(3)

LA 517

(B) Describe any record evidence, monument evidence, occupational evidence, testimonial evidence or any other material evidence you considered, and whether the monument was found or placed.

1986 BARNES C-13 FD 1" X24" PIPE & 2.5' DEEP FD CUT
LIMESTONE. PLACED LARGE PIECE OF CAST IRON ON SOUTH
SIDE OF STONE & POLY. MON ON TOP OF STONE.

1994 WIDOT C-13(1) FD ALUM. PROVIDED STATE PLANE
COORDINATES & I CONVERTED TO COUNTY & LAT/LONG.
NAD83(91) 243,612.94; 2,249,965.83 42-39-48.77858;
88-57-12.81056 COUNTY 262,096.42'; 511,918.932'

2000 WIDOT C-13(2) PROJ #1704-01-2 FD ALUM. COORDINATES
243,612.94; 2,249,965.81

FD POLY MON. & REFERENCE MONUMENTS.

C) Was the corner restored through acceptance of (1) an obliterated evidence location, or, (2) a found perpetuated location?

ACCEPTED FD PERPETUATED LOCATION

D) Describe any material discrepancy between the location of the corner as restored or reestablished and the location of that corner as previously restored or reestablished by distance and direction. Show the discrepancy on the plan view drawing under (a), above. Show the distances between the corner as previously restored or reestablished and (1) the corner as restored or reestablished, and (2) to at least 4 of the witness monuments shown on the drawing in (a), above.

NONE

(E) Was the corner reestablished through lost corner proportionate methods? If so, show the method, including the directions and distances to other public land survey corners used as evidence or used for proportioning the corner location.

I, **Donald Barnes**, hereby certify that the corner location as identified by the corner code index was determined by me under my direction and control and that this U.S. Public Land Survey Monument Record is correct and complete to the best of my knowledge and belief.

Seal

Donald
Embos

Barnes

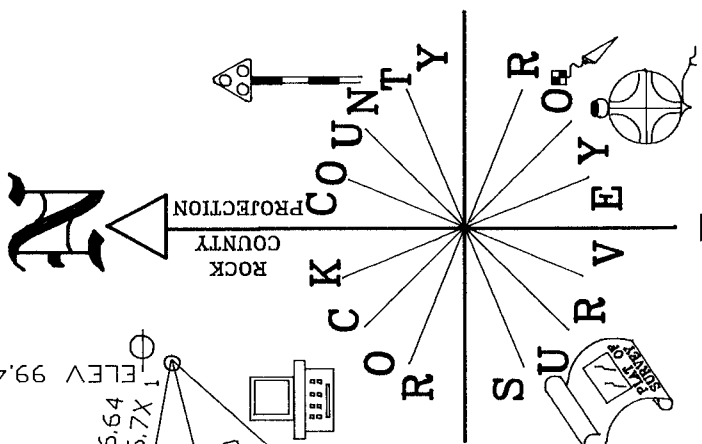
May 25, 2007

CORNER CODE

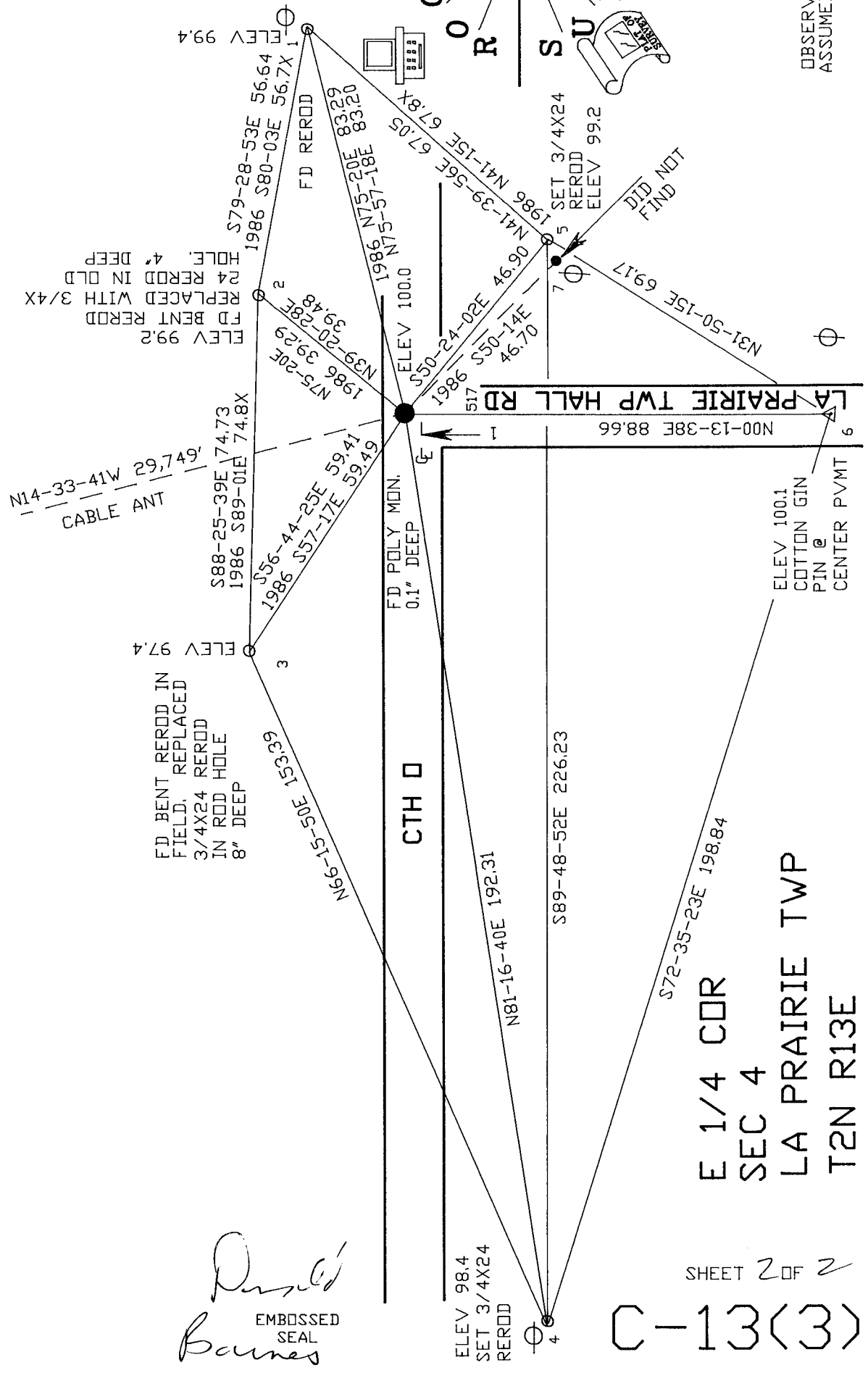
A.E. 7.08 REQUIREMENT

SHEET 1 OF 2

C-13(3)



NOT TO SCALE
OBSERVATION SHEET 517
ASSUMED VERTICAL DATUM



Daniel Barnes
EMBOSSSED SEAL
Barnes
May 25, 2007

E 1/4 COR
SEC 4
LA PRAIRIE TWP
T2N R13E
C-13(3)

SHEET 2 OF 2