

Paper weight-110# (minimum)

Black nonfading ink required

# U.S. PUBLIC LAND SURVEY MONUMENT RECORD

For Public Land Survey Corners In:

WI ADMINISTRATIVE CODE A-E 7.08 REQUIREMENT

T. 4 N. R. 12 E. 4th P.M.

REV 10/23/2004

USMONREC.DWG

### CORNER CODE INDEX

FULTON TWP

ROCK COUNTY WI

IF AVAILABLE  
ROCK COUNTY COORDINATES PREFERRED

A	1	2	3	4	5	6	7	8	9	10	11	12	13	14	15	16	17	18	19	20	21	22	23	24	25	A	
B		6				5				4					3					2						1	B
C																											C
D																											D
E																											E
F																											F
G																											G
H																											H
J																											J
K																											K
L																											L
M																											M
N																											N
O																											O
P																											P
Q																											Q
R																											R
S																											S
T																											T
U																											U
V																											V
W																											W
X																											X
Y																											Y
Z																											Z

North \_\_\_\_\_ Elev. \_\_\_\_\_

East \_\_\_\_\_

Hor. Datum \_\_\_\_\_ Vert. Datum \_\_\_\_\_

LATITUDE \_\_\_\_\_ ELLIPS. HT. \_\_\_\_\_

LONGITUDE \_\_\_\_\_

NAD83(91) \_\_\_\_\_ NETWORK ADJ. YR \_\_\_\_\_

GPS (X) \_\_\_\_\_ TRAVERSE (X) \_\_\_\_\_

BASED ON THE FOLLOWING CONTROL:

PLACE MONUMENT SYMBOL  AT PROPER LOCATION ON ABOVE INDEX

CORNER MONUMENT

WITNESS MONUMENT

(a)

BEARINGS ARE BASED ON: \_\_\_\_\_

FIELD BOOK \_\_\_\_\_ PAGE # \_\_\_\_\_

SHEET 1 OF 3

SHOW A PLAN VIEW DRAWING DEPICTING THE CORNER MONUMENT AND SURROUNDING PHYSICAL FEATURES, INCLUDING THE EXCAVATION AREA AND DEPTH.

PLANNING & ZONING COMMITTEE ADOPTED THIS FORM ON 12/2/1982

CORNER CODE T-17

FU598 ^

(B) Describe any record evidence, monument evidence, occupational evidence, testimonial evidence or any other material evidence you considered, and whether the monument was found or placed.

1836 (JULY 11) BURNHAM NORTH BETWEEN 26 & 27

NO STATIONS

2640 SET 1/4 SEC POST BUR OAK 16 S49W 24.42' BUR OAK 16 N34E 56.1'

2846.58 BUR OAK B IN DI

5280 SET POST COR TO 22,23,26,27 BUR OAK 10 S36E 21.12' BUR OAK 12 N47 1/2W 620.4' FIRST RATE BUR OAK OPENING

1843 TWP RD BK 1 PG 2 SURVEYED ON THIS INSTANT A PIECE OF RD BEGINNING AT AN ANGLE POST IN A RD (A PART OF WHICH HAS BEEN DISCONTINUED) THE SAID POST STANDS IN THE LINE BETWEEN SEC 20 & 29, THENCE N81-30E BOUNDING THE SAID LINES 1314.06' TO THE [SE COR SEC 20] CORNER OF SEC 20 & 21, 28 & 29, THENCE ON THE LINE BETWEEN SECTION 21 & 28 N81-30E 3923.7 TO AN ANGLE POST. THENCE S63E 4488'; THENCE N84E 3267' TO THE QUARTER STAKE BETWEEN SEC. 26 & 27; THENCE ON THE LINES PASSING THROUGH THE CENTER OF 26 N82-15E 1402.5' TO THE BUR OAK TREE; THENCE N76E 554.4' TO A WHITE OAK, N17-45E 561' TO ANGLE POST, THENCE N47-45E 473.88'; THENCE N66-30E 864.6' INTERSECTING THE ABOVE MENTIONED ROAD 1969.44' S76W OF THE ROAD LEADING FROM JANESVILLE TO LAKE KOSHANONG.

1843 TWP RD BK 1 PG 16 BEGINNING AT AN ANGLE POST STANDING ON A LINE BETWEEN SEC 20 & 29, THENCE N81-30E BOUNDING THE SAID LINES 1314.06' TO THE [SE COR SEC 20] CORNER OF SEC 20 & 21, 28 & 29; THENCE ON THE LINE BETWEEN SECTION 21 & 28 N81-30E 3923.7 TO AN ANGLE POST. THENCE S63E 4488'; THENCE N84E 3267' TO THE QUARTER STAKE BETWEEN SEC. 26 & 27; THENCE ON THE LINES PASSING THROUGH THE CENTER OF 26 N82-15E 1402.5' TO THE BUR OAK TREE; THENCE N76E 554.4' TO A WHITE OAK, N17-45E 561' TO ANGLE POST, THENCE N47-45E 473.88'; THENCE N66-30E 864.6' INTERSECTING THE ABOVE MENTIONED ROAD 1969.44' S76W OF THE ROAD LEADING FROM JANESVILLE TO LAKE KOSHANONG. [COX RD]

1867 LOCKE VOL 1 PG 282 & #1409 FD STUMP OF S. B. T. AND REMAINS OF STUMP OF N. BT AND OLD STAKE. SET STAKE JUST SOUTH OF OLD ONE. VAR 8-07 2654.68 TO CEN SEC 27 & 5309.37 TO W 1/4 COR SEC 27

1972 LEE 1388 LEGEND CALLS FOR SETTING PIPE. 2648.27 TO NW COR SEC 26, 2640.14 TO SW COR SEC 26, 2649.73 TO CEN SEC 26, 5297.77 TO E 1/4 COR SEC 26, ANGLE 89-38-31 @ W 1/4 COR SEC 26 FROM NW TO E 1/4 CORNERS SEC 26, ANGLE 90-26-21 @ W 1/4 COR SEC 26 FROM E 1/4 COR SEC 26 TO SW COR SEC 26.

1972 LEE VOL 4 PG 575 SHIMEALL DUG & FD REMAINS OF ORIGINAL STAKES. SET C.I. & REF. SAME.

1972 LEE VOL 4 PG 576 VOL 4 PG 575 2653.17 TO SE COR SEC 22.

1974 LEE VOL 5 PG 20 2640.27 TO SE COR SEC 27, 2648.23 TO NE COR SEC 27, 5316. TO W 1/4 COR SEC 27, ANGLE 90-26-10 @ E 1/4 COR SEC 27 FROM N 1/16<sup>TH</sup> COR OF SW 1/4 OF SEC 27 TO NE COR SEC 27, & ANGLE 89-29-04 @ E 1/4 COR SEC 27 FROM SE COR SEC 27 TO N 1/16<sup>TH</sup> COR OF SW 1/4 OF SEC 27

1975 NORTHROP CSM VOL 5 PG 18 C.I. 2663.51 TO CEN SEC 27 & ANGLE 89-12-53 @ CEN SEC 27 FROM N 1/4 COR SEC 27 TO E 1/4 COR SEC 27

1976 LEE CSM VOL 5 PG 327 C.I.

1977 BARNES VOL 5 PG 287 THERE IS A PROBLEM WITH THE CENTER OF SEC 26. MR. SHIMEALL SUPPOSEDLY SET THE CENTER AT THE INTERSECTION OF THE E/W & N/S 1/4 LINES.

Donald  
Barnes

8-08-07

FU598

SINCE THEN MANY SURVEYS BY MR SHIMEALL AND OTHER SURVEYORS HAVE BEEN TIED TO THIS POINT. I WAS REQUESTED TO VERIFY THE LOCATION OF THE E 1/4 COR AND THE CENTER. I TRAVERSED THE SECTION AND TIED INTO THE QUARTER CORNERS, SE COR, AND CENTER OF SEC 26 AS SET BY SHIMEALL AND LEE INDICATES THEY USED THE SAME CORNER. THE N 1/4 COR AGREES WITH THE SHORT TIES THAT MR SHIMEALL HAD ON A PLAT OF SURVEY. MY COMPUTATIONS SHOW THAT THE INTERSECTION OF THE E/W AND N/S 1/4 LINES IS AS RECORDED BY LEE ON THE PLAT OF SURVEY DATED OCT 30 1872.

1977 BARNES VOL 5 PG 288 FD CI 1320.37 TO W 1/16<sup>TH</sup> COR OF THE SW 1/4 SEC 26.

1977 BARNES VOL 5 PG 344 & 345 FD CI MON. INSTALLED 3 - 1" RISER.

1979 WOODMAN GSM9-7 C.I.

1981 BARNES VOL 6 PG 211 FD C.I.

1992 COMBS CSM VOL 15 PG 499 CI 2663.45 TO 1 1/2" PIPE AT CEN OF SEC 27.

FD CI MON & THE NE REFERENCE PIPE.

C) Was the corner restored through acceptance of (1) an obliterated evidence location, or, (2) a found perpetuated location?

ACCEPTED FD PERPETUATED LOCATION

D) Describe any material discrepancy between the location of the corner as restored or reestablished and the location of that corner as previously restored or reestablished by distance and direction. Show the discrepancy on the plan view drawing under (a), above. Show the distances between the corner as previously restored or reestablished and (1) the corner as restored or reestablished, and (2) to at least 4 of the witness monuments shown on the drawing in (a), above.

NONE

(E) Was the corner reestablished through lost corner proportionate methods? If so, show the method, including the directions and distances to other public land survey corners used as evidence or used for proportioning the corner location.

NO

I, **Donald Barnes**, hereby certify that the corner location as identified by the corner code index was determined by me under my direction and control and that this U.S. Public Land Survey Monument Record is correct and complete to the best of my knowledge and belief.

*Donald Barnes*  
Seal

SHEET 2 OF 3

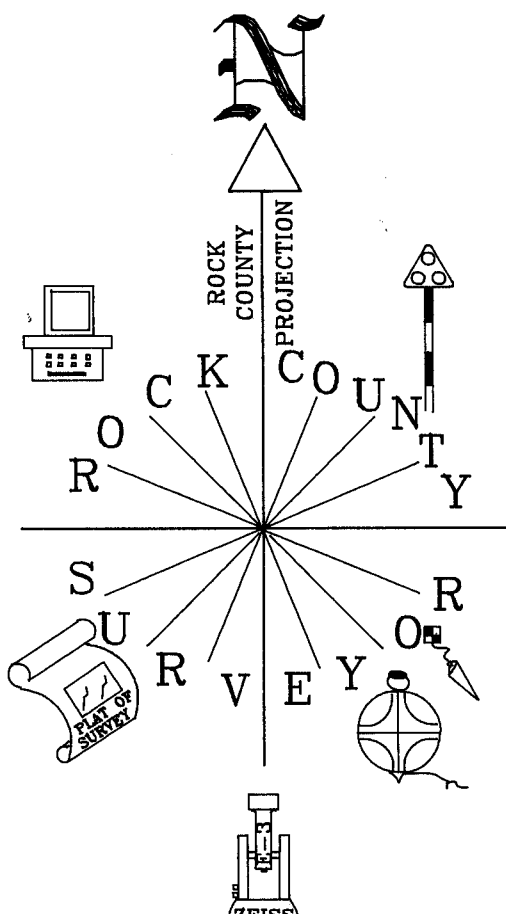
Emboss

*Barnes*

8-08-07

CORNER CODE **T-17**

A.E. 7.08 REQUIREMENT



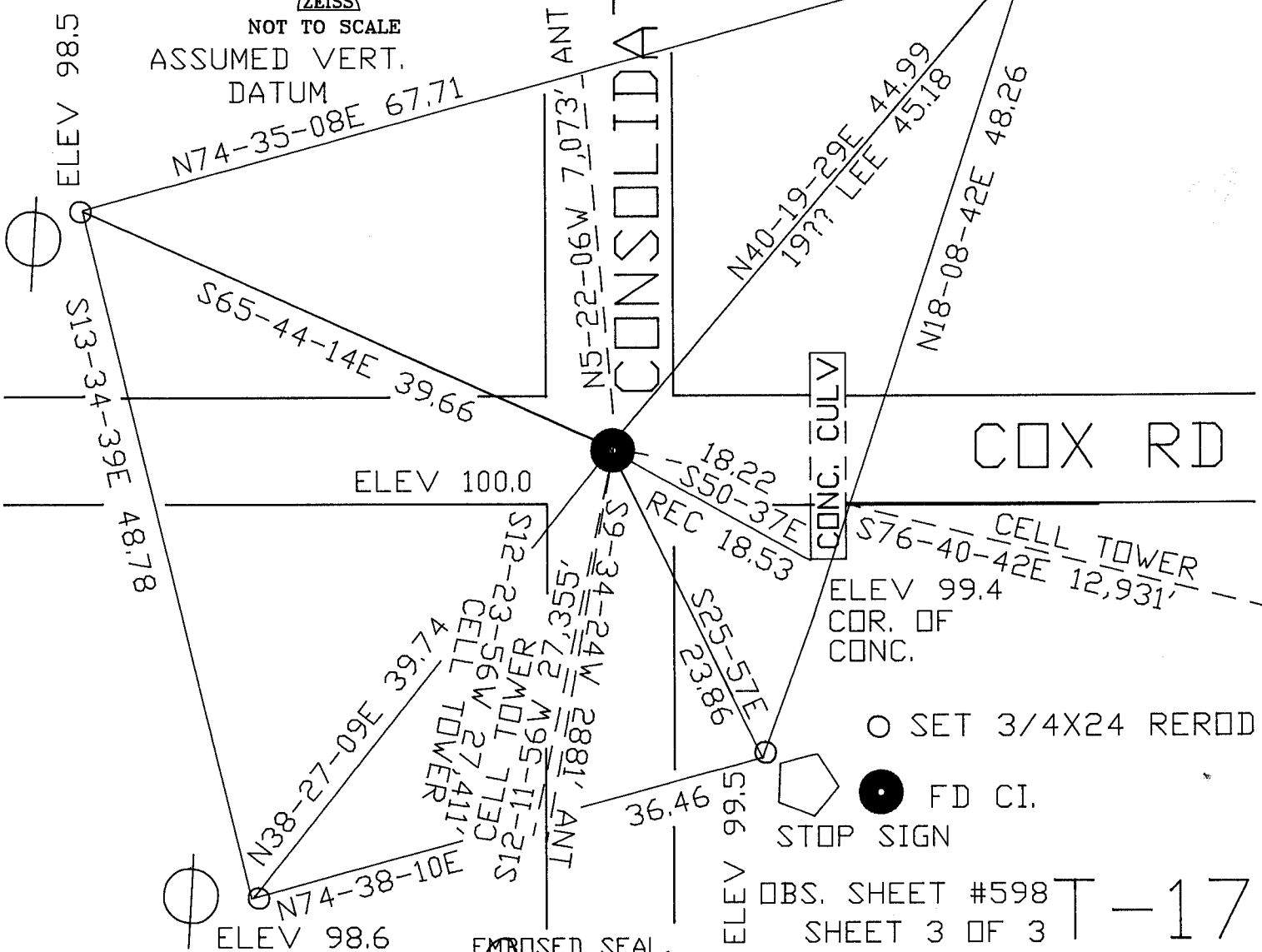
NOT TO SCALE  
ASSUMED VERT.  
DATUM

ROCK COUNTY SURVEY  
ROCK COUNTY PROJECTION

E 1/4 COR  
SEC 27  
FULTON  
T4 R12E

CONSOLIDATED SCHOOL RD

ELEV 98.7  
FD 1" PIPE 10" ABOVE  
GROUND. DROVE TO GRADE



O SET 3/4X24 REROD

● FD CI.  
STOP SIGN

OBS. SHEET #598  
SHEET 3 OF 3

EMBOSED SEAL  
*Donald Barnes*  
8-08-07

T-17