

Paper weight-110# (minimum)

Black nonfading ink required

# U.S. PUBLIC LAND SURVEY MONUMENT RECORD

For Public Land Survey Corners In:

WI ADMINISTRATIVE CODE A-E 7.08 REQUIREMENT

T. 4N. R. 2E. 4th P.M.

REV 10/23/2004

USMONREC.DWG

### CORNER CODE INDEX

1	2	3	4	5	6	7	8	9	10	11	12	13	14	15	16	17	18	19	20	21	22	23	24	25	
A																									A
B																									B
C	6																								C
D		5																							D
E			4																						E
F				3																					F
G					2																				G
H						1																			H
I																									I
J																									J
K																									K
L																									L
M																									M
N																									N
O																									O
P																									P
Q																									Q
R																									R
S																									S
T																									T
U																									U
V																									V
W																									W
X																									X
Y																									Y
Z																									Z

FULTON TWP  
ROCK COUNTY WI

IF AVAILABLE  
ROCK COUNTY COORDINATES PREFERRED

North \_\_\_\_\_ Elev. \_\_\_\_\_

East \_\_\_\_\_

Hor. Datum \_\_\_\_\_ Vert. Datum \_\_\_\_\_

LATITUDE \_\_\_\_\_ ELLIPS. HT. \_\_\_\_\_

LONGITUDE \_\_\_\_\_

NAD83(91) \_\_\_\_\_ NETWORK ADJ. YR \_\_\_\_\_

GPS (X) \_\_\_\_\_ TRAVERSE (X) \_\_\_\_\_

BASED ON THE FOLLOWING CONTROL:

PLACE MONUMENT SYMBOL  AT PROPER LOCATION ON ABOVE INDEX

CORNER MONUMENT

WITNESS MONUMENT

BEARINGS ARE BASED ON: \_\_\_\_\_

FIELD BOOK \_\_\_\_\_ PAGE # \_\_\_\_\_

SHEET 1 OF 2

SHOW A PLAN VIEW DRAWING DEPICTING THE CORNER MONUMENT AND SURROUNDING PHYSICAL FEATURES, INCLUDING THE EXCAVATION AREA AND DEPTH.

PLANNING & ZONING COMMITTEE ADOPTED THIS FORM ON 12/2/1982

CORNER CODE V-7

FU604^

(B) Describe any record evidence, monument evidence, occupational evidence, testimonial evidence or any other material evidence you considered, and whether the monument was found or placed.

- 1836 (AUG) BURNHAM EAST RANDOM BETW SECS 29 & 32  
2442 ENTER DRY PRAIRIE  
3300 LEAVE SAME  
5214 INT. EAST BOUNDY 6.6' SOUTH FIRST RATE BUR OAK  
OPENINGS & DRAY PRAIRIE  
WEST CORRECTED BETWN SEC 32 & 29  
NO STATIONS  
2607 SET 1/4 SEC POST BUR OAK 12 N12 1/2E 107.58' NO  
OTHER BEARING  
4955.28 BUR OAK 10 IN DIA  
5214 TO CORNERS
- 1864 LOCKE VOL 1 PG 201 & #6570 SET 9 O STAKE 3 1/2 FT LONG  
AND HARDHEAD ON E 15X12 1/2X9 VAR 7-45 2614.26 TO NE  
COR SEC 32, VAR 7-45 2618.22 TO NW COR SEC 32
- 1884 RUGER VOL 2 PG 380 FD REMAINS OF BT STUMP & WHERE  
OLD STAKE WAS. SET LIMESTONE 24X10X3 SURROUNDED BY  
HH STONES VAR 5-55 2624.16 TO SE COR SEC 29, VAR 5-45  
2621.19 TO SW COR SEC 29, VAR 5-05 2664.42 TO GEN SEC  
29, & VAR 5-05 5322.74 TO N 1/4 COR SEC 29
- 1974 GEORGE QUILLEN VOL 1 PG 201 SET CI AT N 1/4 COR SEC 5-3-  
12 BY WPL. BY WP& L MARCH 1974
- 1975 BARNES VOL 5 PG 99 FD 24X10X3" LIMESTONE SURROUNDED  
BY 3 HH ON EAST SIDE OF FENCE POST AT FENCE INT. REF.  
SAME.
- 1976 SCHROEDER CSM VOL 6 PG 146 & 147 STATES NOTHING  
ABOUT MON. 1462.60 TO CENTER OF MILES RD.
- 1976 NORTHROP #1418 CALLS FOR CAST IRON MON. 1313.40 (REC  
1312.08) EAST OF 1/16<sup>TH</sup> COR. WHICH IS THE CENTER OF  
GRAVEL ROAD REFERENCED MON. FD NORTHEASTERLY REF.  
PIPE-16.36 & SOUTHWESTERLY REF. PIPE-16.28
- 1979 TOWNSEND CSM VOL 9 PG 61 FD PIPE ANGLE @ N 1/4 COR SEC  
32 FROM NORTH LINE OF NE 1/4 SEC 32 TO N/S 1/4 SEC 32 IS  
90-41-XX, SOUTHERLY 530.17 TO A PIPE ON THE N/S 1/4 LINE.
- 1985 COMBS CSM VOL 10 PG 494 LOT CORNER PIPE 70.00 TO THE  
EAST & WEST. LEGEND CALLS FOR STONE @ N 1/4 COR SEC 32.  
ANGLE @ N 1/4 COR SEC 32 FROM N/S 1/4 LINE TO NW COR SEC  
32 IS 89-46-25 & THE ANGLE FROM THE NORTH LINE OF THE  
NE 1/4 OF SEC 32 TO THE N/S 1/4 LINE IS 90-41-XX
- 1988 SCHROEDER #12549 CALLS FOR COR BUT STATES NOTHING  
ABOUT IT
- 1989 COMBS #12254 FD STONE MON. 1313.25 TO FD PIPE @ S  
1/16<sup>TH</sup> COR OF SE 1/4 OF SEC 29 & 1332.79 TO FD PIPE @ W  
1/16<sup>TH</sup> COR OF SE 1/4 SEC 29
- 1993 SCHROEDER #10303 STATES NOTHING ABOUT MON. LOT  
CORNER PIPE 70.00 TO THE EAST & WEST.
- 1999 GRENLIE #1462 STATES NOTHING ABOUT MON. 2625.11 TO  
NW COR SEC 32

FD 24X10X3 LIMESONE SURROUNDED BY 3 HH ON EAST SIDE OF  
FENCE POST @ INT. OF N/S & E/W FENCE LINE. PLACED 2 MAGNETS  
ABOUT 12" DEEP ON EAST SIDE OF L.S. & CARSONITE ON EAST SIDE  
OF L.S.

C) Was the corner restored through acceptance of (1) an obliterated evidence location, or, (2) a found  
perpetuated location?

ACCEPTED FD L.S.

I, **Donald Barnes**, hereby certify that the corner location as identified by the corner code index  
was determined by me under my direction and control and that this U.S. Public Land Survey  
Monument Record is correct and complete to the best of my knowledge and belief.

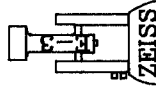
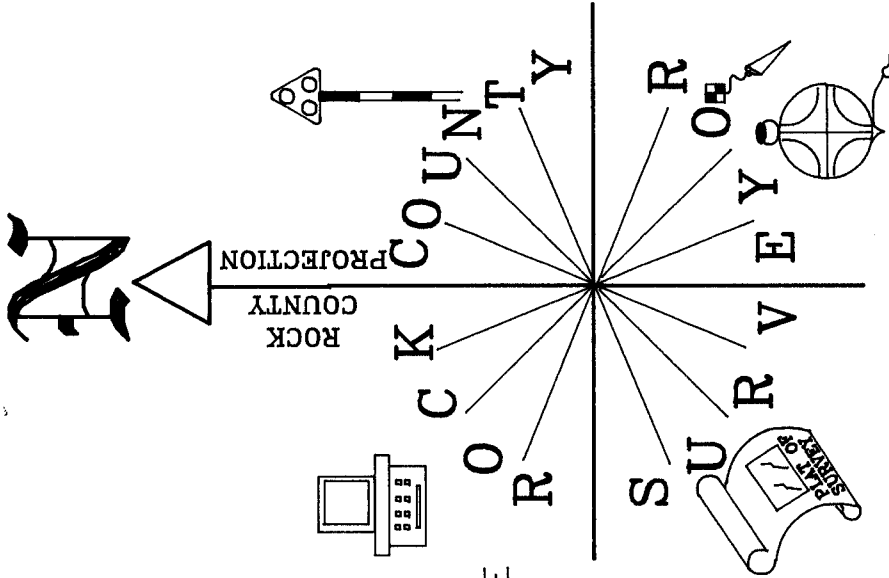
Seal  
*Donald Barnes*  
Emboss

SHEET 1 OF 2

11/30/07

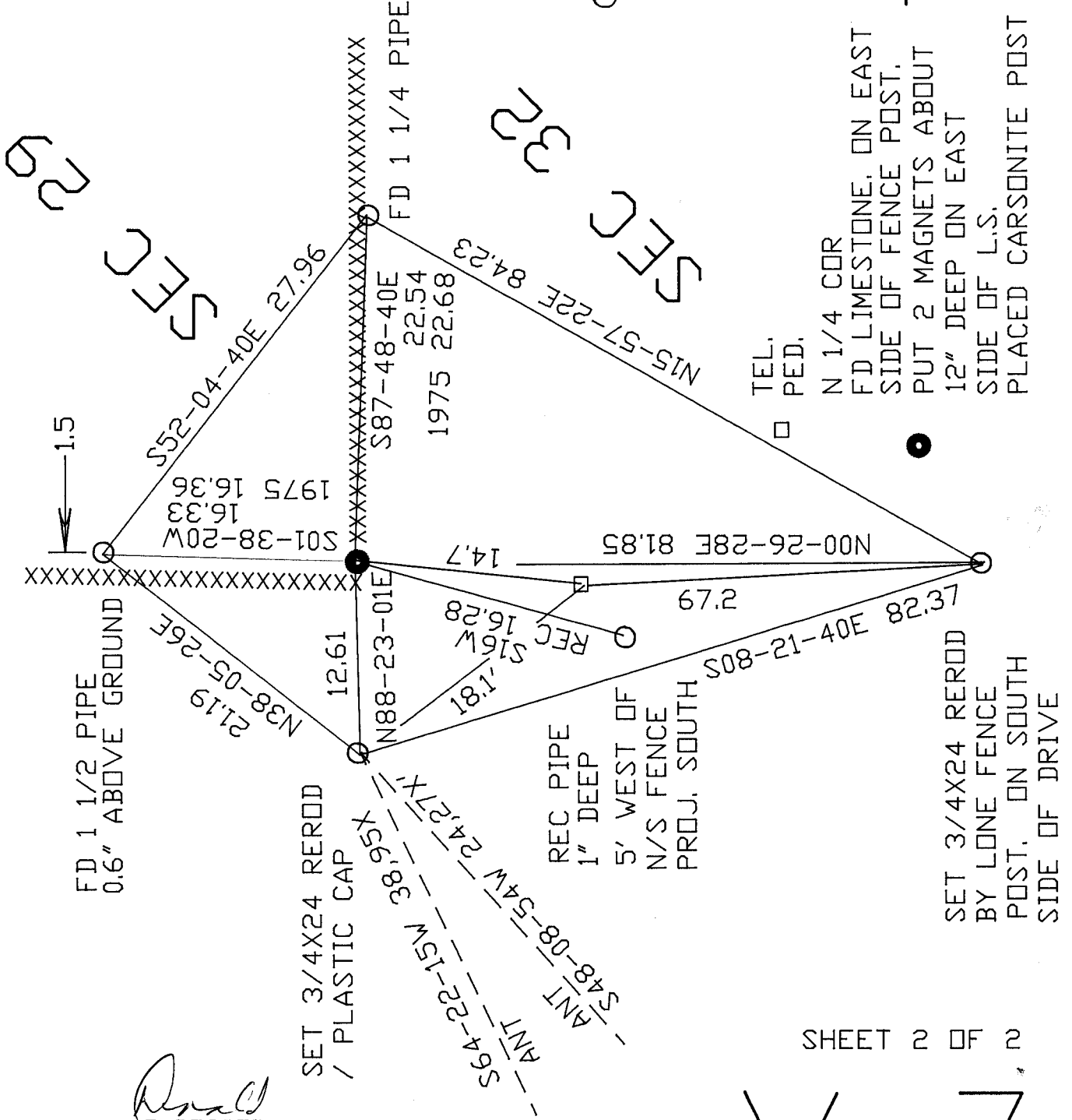
A.E. 7.08 REQUIREMENT

CORNER CODE V-7



NOT TO SCALE  
OBSERVATION SHEET #150

T4N R12E  
FULTON TWP



*Paul*  
EMBOSSSED  
SEAL  
*Baines*  
11/30/07

