

# U.S. PUBLIC LAND SURVEY MONUMENT RECORD

For Public Land Survey Corners In:  
T. 4 N. R. 12 E. 4th P.M.  
CORNER CODE INDEX

WI ADMINISTRATIVE CODE A-E 7.08 REQUIREMENT  
REV 10/23/2004 USMONREC.DWG

A	1	2	3	4	5	6	7	8	9	10	11	12	13	14	15	16	17	18	19	20	21	22	23	24	25	A
B						6																				B
C							5																			C
D								4																		D
E									3																	E
F										2																F
G											1															G
H																										H
J																										J
K																										K
L																										L
M																										M
N																										N
O																										O
P																										P
Q																										Q
R																										R
S																										S
T																										T
U																										U
V																										V
W																										W
X																										X
Y																										Y
Z																										Z

FULTON TWP

ROCK COUNTY WI

IF AVAILABLE  
ROCK COUNTY COORDINATES PREFERRED

North \_\_\_\_\_ Elev. \_\_\_\_\_

East \_\_\_\_\_

Hor. Datum \_\_\_\_\_ Vert. Datum \_\_\_\_\_

LATITUDE \_\_\_\_\_ ELLIPS. HT. \_\_\_\_\_

LONGITUDE \_\_\_\_\_

NAD83(91) \_\_\_\_\_ NETWORK ADJ. YR \_\_\_\_\_

GPS (X) \_\_\_\_\_ TRAVERSE (X) \_\_\_\_\_

BASED ON THE FOLLOWING CONTROL:

PLACE MONUMENT SYMBOL  AT PROPER LOCATION ON ABOVE INDEX

CORNER MONUMENT

WITNESS MONUMENT

BEARINGS ARE BASED ON: \_\_\_\_\_

FIELD BOOK \_\_\_\_\_ PAGE # \_\_\_\_\_

SHEET 1 OF 3

SHOW A PLAN VIEW DRAWING DEPICTING THE CORNER MONUMENT AND SURROUNDING PHYSICAL FEATURES, INCLUDING THE EXCAVATION AREA AND DEPTH.


PLANNING & ZONING COMMITTEE ADOPTED THIS FORM ON 12/2/1982


CORNER CODE V-17

FU609

(B) Describe any record evidence, monument evidence, occupational evidence, testimonial evidence or any other material evidence you considered, and whether the monument was found or placed.

- 1836 (JULY 11) BURNHAM NORTH BETWEEN 26 & 27  
NO STATIONS
- 2640 SET 1/4 SEC POST BUR OAK 16 S49W 24.42' BUR OAK 16 N34E 56.1'
- 2846.58 BUR OAK 8 IN DI
- 5280 SET POST COR TO 22,23,26,27 BUR OAK 10 S36E 21.12' BUR OAK 12 N47 1/2W 620.4' FIRST RATE BUR OAK OPENING
- 1836 (AUG) BURNHAM EAST RANDOM BETWN SECS 27 & 34
- 5326.2 INT. EAST BOUNDY 11.88' N GOOD 2<sup>ND</sup> RATE W & BUR OAK OPENINGS WEST 1/2 BROKEN  
WEST CORRECTED BETWN SECS 27 & 34  
NO STATIONS
- 2663.1 SET 1/4 SEC POST W. OAK 24 S60E 1.98' W. OAK 18 N26W 31.02'
- 4759.92 BUR OAK 12 IN DI
- 5326.2 TO CORNERS
- 1836 (JULY 11) BURNHAM EAST RANDOM BETWN SECS 26 & 35
- 5287.26 INT EAST BOUNDY 6.6' NORTH FIRST RATE W & BUR OAK OPENINGS  
WEST CORRECTED BETWN 35 & 26
- 2451.9 W OAK 18 IN DI
- 2643.3 SET 1/4 SEC POST W OAK 16 N28W 34.32' W OAK 18 S67W 33.66'  
NO STATIONS
- 5287.26 TO CORNERS
- 1836 (JULY 11) BURNHAM NORTH BETWEEN SECTIONS 34 & 35
- 1568.82 BUR OAK 10 IN DI
- 2640 SET 1/4 SEC POST BUR OAK 18 S24 1/2W 29.7' BUR OAK 16 N22E 80.52'
- 4305.18 BUR OAK 10 IN DI
- 5280 SET POST COR TO 26,27,34, & 35 BUR OAK 12 N37E 49.5' BUR OAK 24 S7W 34.98' FIRST RATE BUR OAK OPENINGS
- 1875 RUGER VOL 2 PG 188 & #6571 FD REMAINS OF OLD STAKE & STUMP OF NE BT & WHERE STUMP OF SW BT HAD BEEN DUG UP SET LIMESTONE 22X7X3 SURROUNDED IT BY 4 HH STONES. VAR 5-43 2652.54 TO W 1/4 COR SEC 35
- 1877 RUGER VOL 2 PG 229 COR. EST. BY SELF SEE SEC 35 PG 143
- 1960 KOHLBECK #1465 SET R/R SPIKE. ANGLE 89-46-XX @ NE COR SEC 34 FROM E 1/16<sup>TH</sup> COR OF NE 1/4 SEC 34 TO NORTH LINE OF NE 1/4 SEC 34.
- 1967 BATTERMAN VOL 4 PG 299 DUG & FD LS SURROUNDED BY HHS & REF SAME.
- 1972 LEE #1388 LEGEND CALLS FOR SETTING PIPE. 2649.19 TO S 1/4 COR SEC 26, 2640.14 TO W 1/4 COR SEC 26, ANGLE 89-37-54 @ SW COR SEC 26 FROM W 1/4 COR SEC 26 TO S 1/4 COR SEC 26
- 1973 LEE #1474 60d SPIKE
- 1974 LEE VOL 5 PG 20 2669.90 TO S 1/4 COR SEC 27, 2640.27 TO E 1/4 COR SEC 27, ANGLE 90-37-02 @ SE COR SEC 27 FROM S 1/4 COR SEC 27 TO E 1/4 COR SEC 27. VOL 4 PG 299
- 1977 BARNES VOL 5 PG 288 SHOW REC DISTANCES & BEARINGS
- 1977 BARNES VOL 5 PG 344 & 345 FD C.I. MON. INSTALLED 1" RISER.
- 1977 COMBS CSM VOL 7 PG 68 C.I.
- 1977 SCHROEDER CSM VOL 6 PG 293 STATES NOTHING ABOUT MON
- 1978 COMBS CSM VOL 7 PG 208 STATES NOTHING ABOUT MON. SOUTHERLY 1301.26 TO PIPE IN RD

  
 Emboss  
 Seal 3/28/07

PAGE 1 OF 3  
 CORNER CODE   
 V-17

FU609

1978 SCHROEDER GSM VOL 8 PG 105 STATES NOTHING  
1979 COMBS #12981 CALLS FOR BUT STATES NOTHING ABOUT  
MON. 1301.26 NORTH OF CENTER OF MILES RD M.I.  
INSPECTION  
1980 BARNES VOL 6 PG 17 SHOWS REC. DISTANCES

FD C.I. MON. 0.1' DEEP AND 3 REFERENCE PIPES AS SHOWN IN  
DRAWING. MON IS ON LINE WITH N/S PVMT. CENTERLINE & ABOUT  
3' NORTH OF PVMT. CENTERLINE PROJECTED FROM THE EAST.

C) Was the corner restored through acceptance of (1) an obliterated evidence location, or, (2) a found perpetuated location?

ACCEPTED FD MON.

D) Describe any material discrepancy between the location of the corner as restored or reestablished and the location of that corner as previously restored or reestablished by distance and direction. Show the discrepancy on the plan view drawing under (a), above. Show the distances between the corner as previously restored or reestablished and (1) the corner as restored or reestablished, and (2) to at least 4 of the witness monuments shown on the drawing in (a), above.

NONE

(E) Was the corner reestablished through lost corner proportionate methods? If so, show the method, including the directions and distances to other public land survey corners used as evidence or used for proportioning the corner location.

NO


I, **Donald Barnes**, hereby certify that the corner location as identified by the corner code index was determined by me under my direction and control and that this U.S. Public Land Survey Monument Record is correct and complete to the best of my knowledge and belief.

*Donald Barnes*  
Seal  
3-28-07  
Emboss

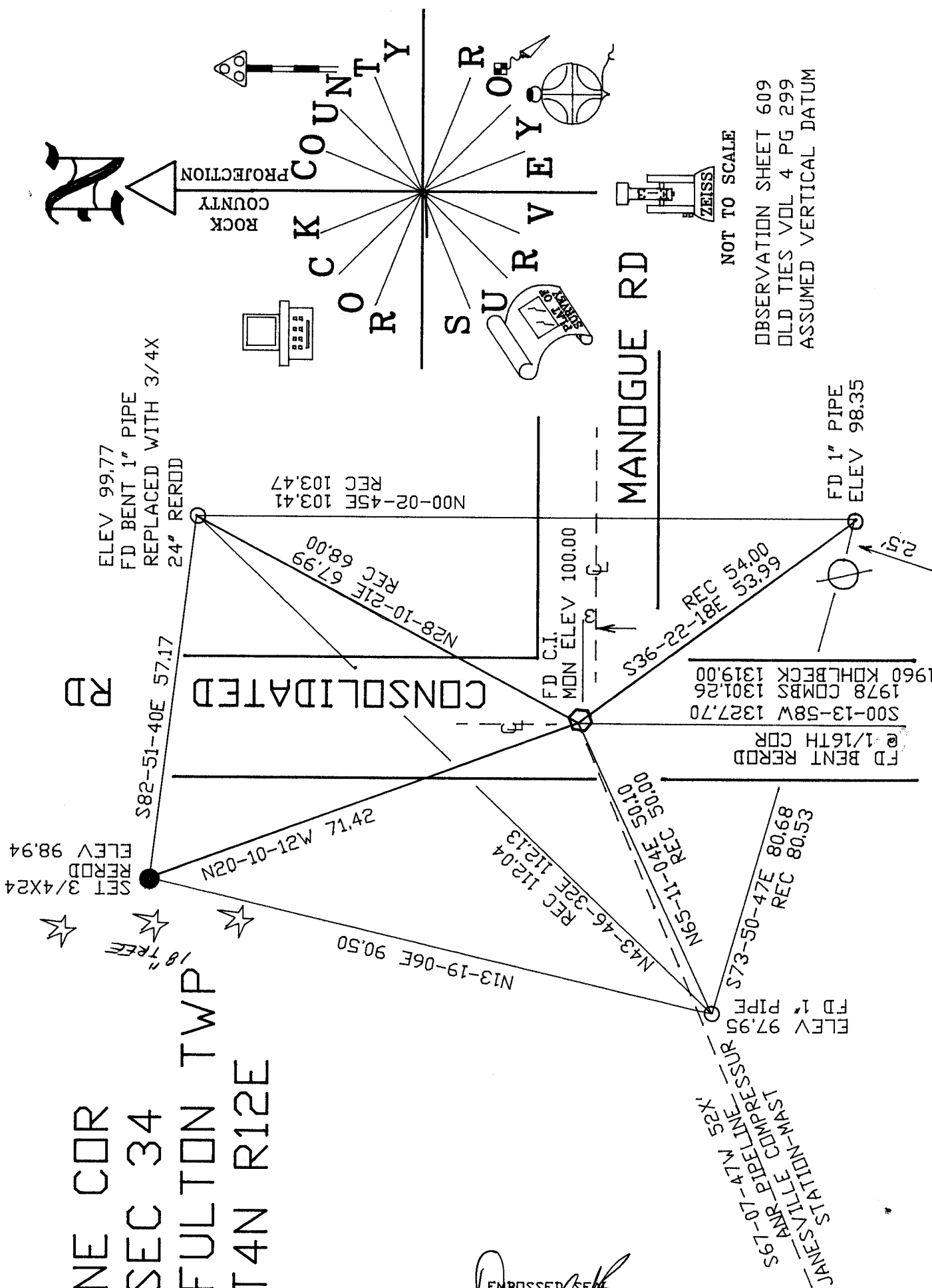
SHEET 2 OF 3

CORNER CODE

A.E. 7.08 REQUIREMENT

  
V-17

NE COR  
 SEC 34  
 FULTON TWP  
 T4N R12E



EMBOSSED SEAL  
*Donald Barnes*  
 3/28/07

V-17