

U.S. PUBLIC LAND SURVEY MONUMENT RECORD

For Public Land Survey Corners in the

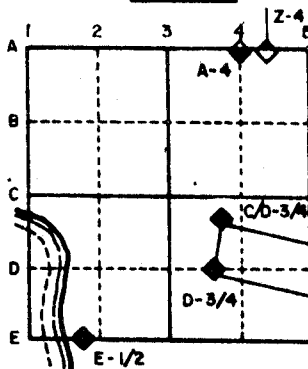
T. 4 N., R. 12 E.

CORNER CODE INDEX

	1	2	3	4	5	6	7	8	9	10	11	12	13	14	15	16	17	18	19	20	21	22	23	24	25
A																									
B																									
C	6																								
D		5																							
E			4																						
F				3																					
G					2																				
H																									
I																									
J	7																								
K		8																							
L			9																						
M				10																					
N					11																				
O						12																			
P							13																		
Q								14																	
R									15																
S										16															
T											17														
U												18													
V													19												
W														20											
X															21										
Y																22									
Z																	23								
																		24							
																			25						
																				26					
																					27				
																						28			
																							29		
																								30	
																									31
																									32
																									33
																									34
																									35
																									36

PLACE MONUMENT SYMBOL (◆) AT PROPER LOCATION ON ABOVE INDEX

EXAMPLE

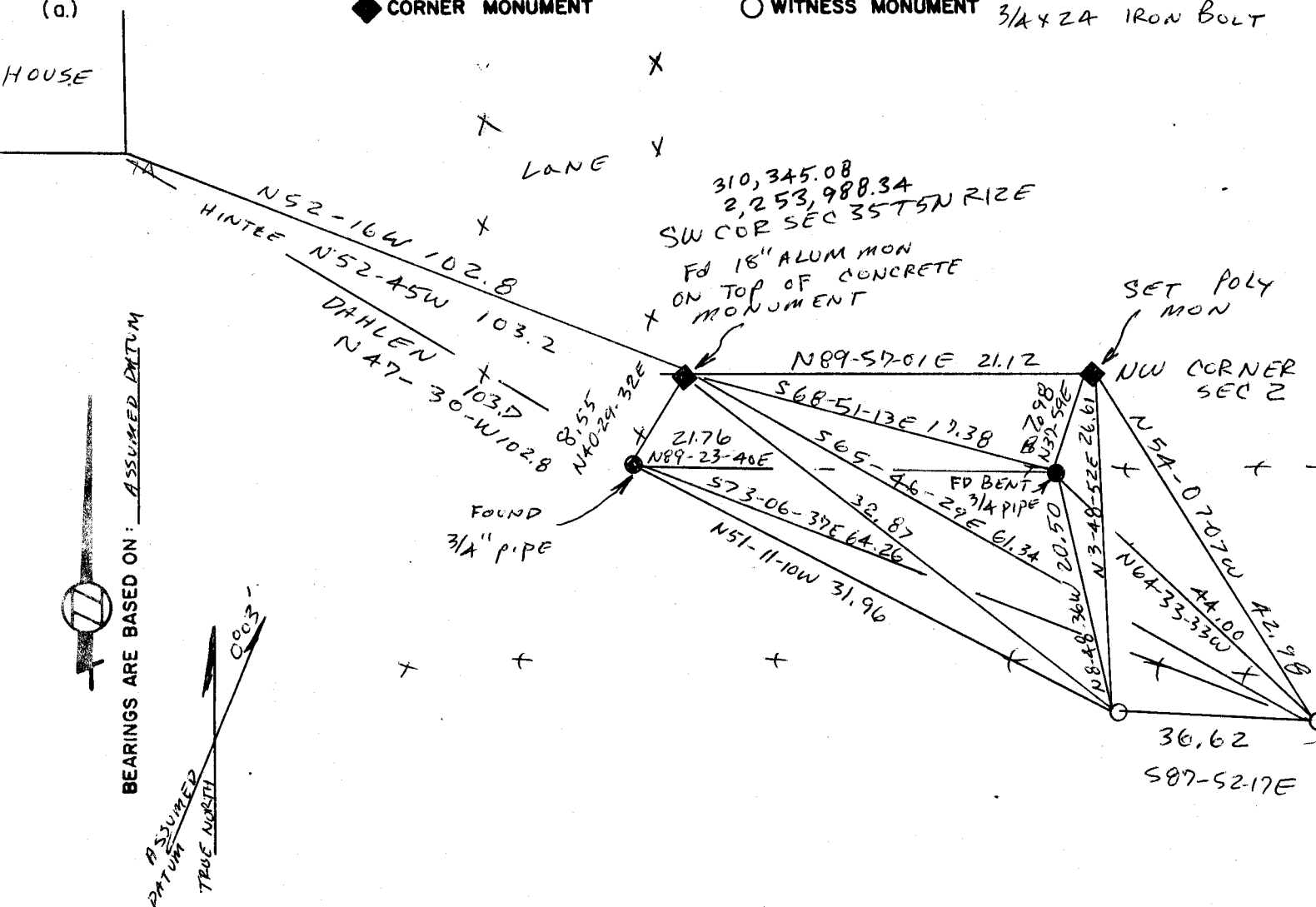


FULTON TWP
ROCK COUNTY WI

IF AVAILABLE
STATE PLANE COORDINATES

North (Y) 310 345.34 Eleve. (Z) _____
 East (X) 2,254,009.44 Zone _____
 Hor. Datum _____ Vert. Datum _____

(a) ◆ CORNER MONUMENT ○ WITNESS MONUMENT 3/4 x 24 IRON BOLT



FIELD BOOK 2 PAGE # 65

MICROFILMED

SHOW A PLAN VIEW DRAWING DEPICTING THE CORNER MONUMENT AND SURROUNDING PHYSICAL FEATURES, INCLUDING THE EXCAVATION AREA AND DEPTH. THE CORNER MONUMENT SHALL HAVE THE FOLLOWING CHARACTERISTICS: 1) HAVE AT LEAST TWO PREDETERMINED BREAK-OFF POINTS. 2) IF BROKEN, LEAVE A PERMANENTLY MAGNETIZED REMNANT AT THE ORIGINAL POINT. 3) MUST BE EXTENDABLE. 4) THE CAP IS INSCRIBED: ROCK COUNTY SURVEY MONUMENT - PENALTY FOR DISTURBING MARKER. 5) OR AN EXISTING CUT LIMESTONE. AN IRON PIPE 1 1/2" x 4'0" (MINIMUM) MAY BE USED IN AREAS WHERE GROUND WATER IS WITHIN ONE FOOT OF THE SURFACE. IF THE CORNER IS OCCUPIED BY AN IMPROVEMENT (MANHOLE, BURIED CABLE, ETC.) ANY DURABLE, DISTINCT MONUMENT MAY BE USED. CORNERS SHALL BE REFERENCED WITH AT LEAST 4 DURABLE WITNESS MONUMENTS. WITNESS MONUMENTS SHALL BE MADE OF CONCRETE, NATURAL STONE, IRON OR OTHER EQUALLY DURABLE MATERIAL, EXCEPT WOOD. DESCRIBE THE CORNER AND THE WITNESS MONUMENTS.

CORNER CODE:
A 17

(b.) Describe any record evidence, monument evidence, occupational evidence, testimonial evidence or any other material evidence you considered, and whether the monument was found or placed.

- 1) IN 1834 HARRISON CLOSED 21.12 FT EAST OF THE SW CORNER SEC 35 T5NR12E.
- 2) IN 1881 RH LEE FOUND THE STUMPS OF THE BTs FOR DANE COUNTY AND USED A POINT 20.46 FT EAST FOR THE NW CORNER OF SEC 2.
- 3) IN 1884 RUGER FOUND AT THE SW CORNER SEC 35 AN OLD STAKE, STUMP OF THE SE BT & WHERE THE SW WAS. HE DROVE A STAKE & SURROUNDED IT BY 4 HH. AT THE NW CORNER OF SECTION 2 HE FOUND THE STUMP OF THE NW BT & THE APPEARANCE OF AN OLD STAKE. HE DROVE A NEW STAKE & SURROUNDED IT BY 4 HARD HEAD STONES.
- 4) IN 1912 HINTZE STATED HE FOUND A DRAG TOOTH AT THE NW CORNER OF SECTION 2 & SET THE SW CORNER OF SECTION 35 AT 21.1 FT WEST OF THE NW CORNER. HINTZE USED CONCRETE MONUMENTS FOR THE MONUMENTATION OF T5NR12E.
- 5) IN 1951 A. DAHLEN SHOWS AT THE SW CORNER SEC 35 AN IRON STAKE ON LINE WITH THE N/S FENCE LINE AND 103.7' TO THE SE CORNER OF THE HOUSE. THE FENCE LINES AS SHOWN WERE DRASTICALLY ALTERED AS A RESULT OF LITIGATION. MR CHESTER KRUCKENBERG STATED THIS WAS AGREED TO IN THE DANE COUNTY JUDGE'S CHAMBERS. (CONT)
(c.) Was the corner restored through acceptance of (1) an obliterated evidence location, or (2) a found perpetuated location?

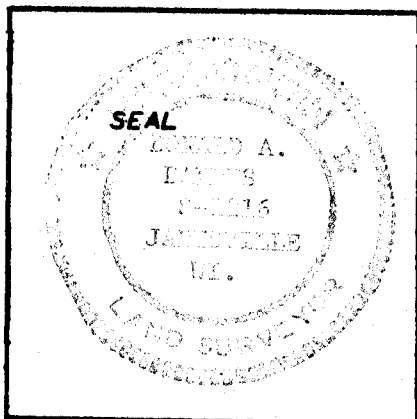
ACCEPTED FOUND CONCRETE MONUMENT FOR THE SW CORNER OF SEC 35 T5NR12E AND SET THE NW CORNER OF SECTION 2 ON LINE WITH THE SW & S1/4 CORNER OF SEC 35 AT RECORD DISTANCE.

- (d.) Describe any material discrepancy between the location of the corner as restored or reestablished and the location of that corner as previously restored or reestablished by distance and direction. Show the discrepancy on the plan view drawing under (a), above. Show the distances between the corner as previously restored or reestablished and (1) the corner as restored or reestablished, and (2) to at least 4 of the witness monuments shown on the drawing in (a), above.

I DID NOT ACCEPT THE IRON PIPE BECAUSE THERE WAS NO DOCUMENTATION THAT SUPPORTED WHO OR HOW IT WAS ESTABLISHED.

- (e.) Was the corner reestablished through lost corner proportionate methods? If so, show the method, including the directions and distances to other public land survey corners used as evidence or used for proportioning in determining the corner location.

I, Donald Bures, hereby certify that the corner points as identified by the corner code index were, in a field survey on APRIL 24, 1985, established, re-established, monumented, re-monumented, recovered or restored as expressed below and in conformance with the regulations and rules as required in the current manual of survey instructions of the United States Department of Interior, Bureau of Land Management.



COUNTY SURVEYOR FILING DATA

Date of Computer Entry _____

Date Received _____

Date Microfilmed AUG 30, 1985

Treasurer's Receipt No. _____

Number of Included Sheets 1

AFFIX YOUR LAND SURVEYOR SEAL. CORNER CODE A17

CONT.

B) 6) IN 1965 GEORGE WEIR SHOWS AT THE SW CORNER OF SECTION 35 AN IRON STAKE WHICH IS 0.65' SOUTH OF THE N/W FENCE LINE.

7) IN 1979 GLEN NORTROP SHOWS AT THE SW CORNER OF SECTION 35 AN ALUMINUM MONUMENT.

8) I DUG WITH A BACK HOE AT THE SW CORNER OF SECTION 35 AND THE NW CORNER OF SECTION 2 AND FOUND THE CONCRETE MONUMENT AT THE SW CORNER OF SECTION 35

