

Paper weight-110# (minimum)

Black nonfading ink required

U.S. PUBLIC LAND SURVEY MONUMENT RECORD

For Public Land Survey Corners In:

WI ADMINISTRATIVE CODE A-E 7.08 REQUIREMENT

T. 2 N. R. 14 E. 4th P.M.

REV 10/23/2004

USMONREC.DWG

CORNER CODE INDEX

BRADFORD TWP

ROCK COUNTY WI

IF AVAILABLE

ROCK COUNTY COORDINATES PREFERRED

	1	2	3	4	5	6	7	8	9	10	11	12	13	14	15	16	17	18	19	20	21	22	23	24	25		
A																											A
B																											B
C																											C
D																											D
E																											E
F																											F
G																											G
H																											H
J																											J
K																											K
L																											L
M																											M
N																											N
O																											O
P																											P
Q																											Q
R																											R
S																											S
T																											T
U																											U
V																											V
W																											W
X																											X
Y																											Y
Z																											Z

North _____ Elev. _____

East _____

Hor. Datum _____ Vert. Datum _____

LATITUDE _____ ELLIPS. HT. _____

LONGITUDE _____

NAD83(91) _____ NETWORK ADJ. YR _____

GPS (X) _____ TRAVERSE (X) _____

BASED ON THE FOLLOWING CONTROL:

PLACE MONUMENT SYMBOL AT PROPER LOCATION ON ABOVE INDEX

CORNER MONUMENT

WITNESS MONUMENT

(a)

BEARINGS ARE BASED ON:

FIELD BOOK _____ PAGE # _____

SHEET 1 OF 2

SHOW A PLAN VIEW DRAWING DEPICTING THE CORNER MONUMENT AND SURROUNDING PHYSICAL FEATURES, INCLUDING THE EXCAVATION AREA AND DEPTH.

PLANNING & ZONING COMMITTEE ADOPTED THIS FORM ON 12/2/1982

CORNER CODE E-8

BR1525 S1/16CORSE1/4SEC5

(B) Describe any record evidence, monument evidence, occupational evidence, testimonial evidence or any other material evidence you considered, and whether the monument was found or placed.

1920 BATTERMAN VOL 3 PG 99 SET IRON ROD. 1325.57 TO SE & S 1/4 CORNERS OF SEC 5.

1971 LEE VOL 4 PG 514 DUG & FD 12X12X6 HH ON END BUT FD NO PIN. REFERENCED SAME.

1982 BARNES VOL 6 PG 254 FD PK NAIL IN PVMT & 1" IRON PIPE REFERENCE MONUMENTS. FIELD BOOK #1 PG 13 CALLS FOR 1327.04 TO NE COR SEC 8 & ANGLE OF 0-09-17 @ NE COR SEC 8 FROM PK TO N 1/4 COR SEC 8. SHOWS PK AS 1' EAST OF WEST EDGE OF PATCH, 4' WEST OF EAST EDGE OF PATCH, 3 SOUTH OF NORTH EDGE OF PATCH, & 1' NORTH OF SOUTH EDGE OF PATCH. PK IS ON LINE N/S FENCE TO THE NORTH & @ CENTER OF PVMT.

FD SW & NE REFERENCE PIPES. SE REFERENCE PIPE WAS PROBABLY DESTROYED. THE PIPE'S INTERSECTION DISTANCE IS AT THE NE BASE OF OPTIC FIBER BOX. THE NW REFERENCE PIPE WAS PROBABLY DESTROYED BY DITCH AND CMP. INSTALLED @ SURFACE A STEEL SURVEY MONUMENT SPIKE AFTER FINAL MATT WAS INSTALLED. STEEL SURVEY SPIKE IS 3" LONG, 3/8" DIAMETER, & TOP IS 1" IN DIAMETER AND STAMPED "SURVEY MARKER".

C) Was the corner restored through acceptance of (1) an obliterated evidence location, or, (2) a found perpetuated location?

ACCEPTED 12X12X6 HH LOCATION AS DETERMINED BY INTERSECTION OF REFERENCE PIPES. S89-54-24E 1327.13 TO NE COR SEC 8 & N88-37-29W 1323.72 TO N 1/4 COR SEC 8. THIS IS 3.26' SOUTH OF A LINE BETWEEN THE S 1/4 COR SEC 5 & THE SE COR OF SEC 5.

D) Describe any material discrepancy between the location of the corner as restored or reestablished and the location of that corner as previously restored or reestablished by distance and direction. Show the discrepancy on the plan view drawing under (a), above. Show the distances between the corner as previously restored or reestablished and (1) the corner as restored or reestablished, and (2) to at least 4 of the witness monuments shown on the drawing in (a), above.

BY USING THE OLD FIELD DATA THE OLD PK IS S16-34-39E 0.34 OF THE TIE INTERSECTION.

(E) Was the corner reestablished through lost corner proportionate methods? If so, show the method, including the directions and distances to other public land survey corners used as evidence or used for proportioning the corner location.

I, **Donald Barnes**, hereby certify that the corner location as identified by the corner code index was determined by me under my direction and control and that this U.S. Public Land Survey Monument Record is correct and complete to the best of my knowledge and belief.

Seal

Emboss

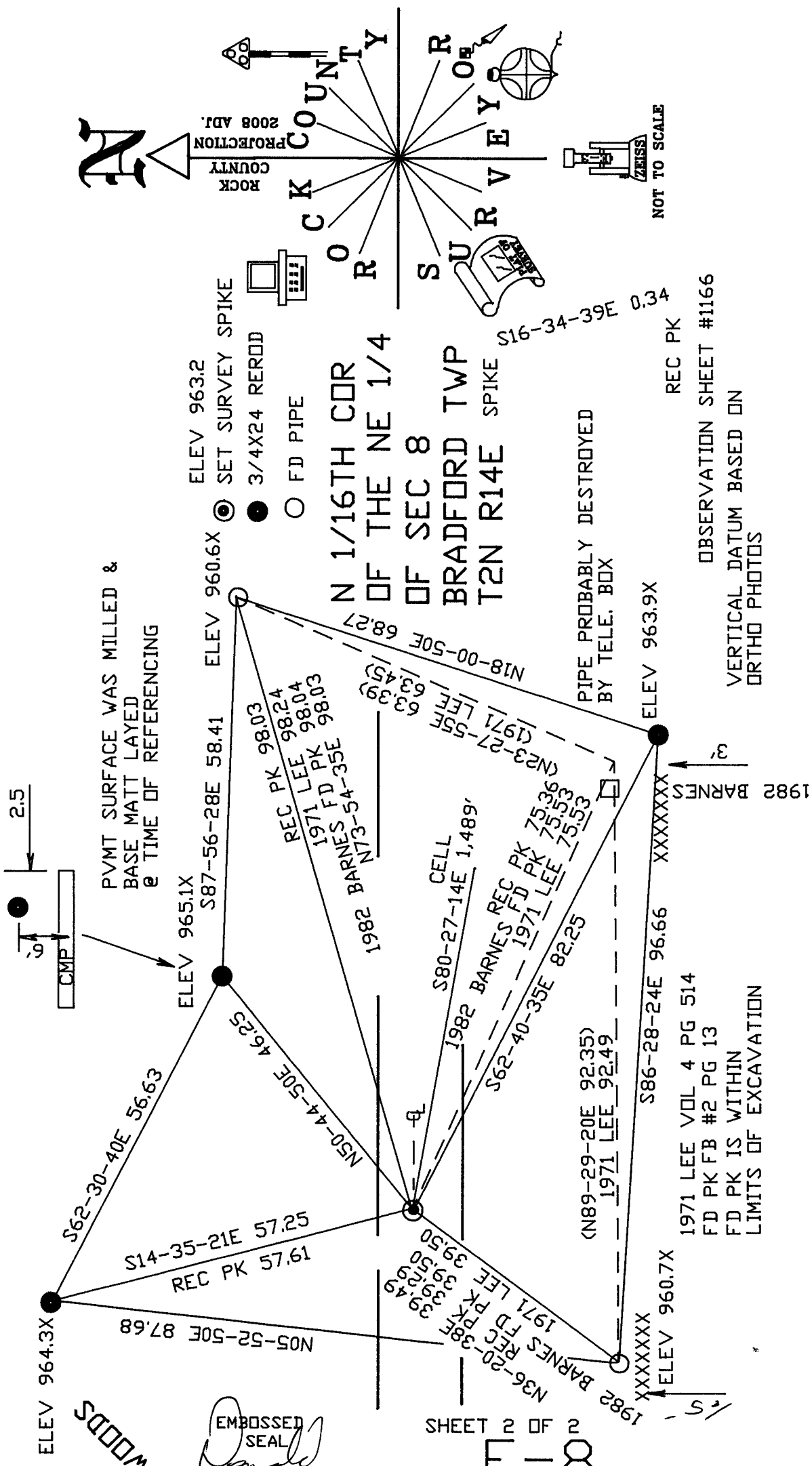
Barnes

9-22-08

SHEET 1 OF 2

CORNER CODE E-8

A.E. 7.08 REQUIREMENT



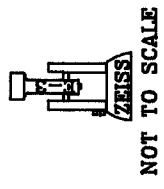
ROCK COUNTY SURVEY

PROJECTION 2008 ADJ.
ROCK COUNTY

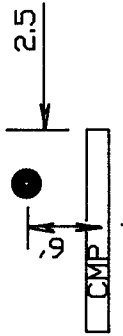
N 1/16TH COR
OF THE NE 1/4
OF SEC 8
BRADFORD TWP
T2N R14E SPIKE

S16-34-39E 0.34

- SET SURVEY SPIKE
- 3/4X24 REROD
- FD PIPE



OBSERVATION SHEET #1166
VERTICAL DATUM BASED ON
ORTHO PHOTOS



PVT SURFACE WAS MILLED &
BASE MATT LAYED
@ TIME OF REFERENCING

WOODS

EMBOSSSED SEAL
Ronald Barnes

9-22/08

SHEET 2 OF 2

(N89-29-20E 92.35)
1971 LEE 92.49

1971 LEE VOL 4 PG 514
FD PK FB #2 PG 13
FD PK IS WITHIN
LIMITS OF EXCAVATION

1982 BARNES

PIPE PROBABLY DESTROYED
BY TELE. BOX

REC PK

ELEV 963.9X

XXXXXXX

S86-28-24E 96.66

ELEV 960.7X

XXXXXXX

ELEV 966.66

XXXXXXX