

# U.S. PUBLIC LAND SURVEY MONUMENT RECORD

For Public Land Survey Corners in:

WI ADMINISTRATIVE CODE A-E 7.08 REQUIREMENT

T. 3N., R. 4E

### CORNER CODE INDEX

A	1	2	3	4	5	6	7	8	9	10	11	12	13	14	15	16	17	18	19	20	21	22	23	24	25
B																									
C	6						9			A				3											1
D																									
E																									
F																									
G	7						8			9				10											12
H																									
I																									
J																									
K																									
L	18						17			16				15											13
M																									
N																									
O																									
P	19						20			21				22											24
Q																									
R																									
S																									
T	30						29			28				27											25
U																									
V																									
W																									
X	31						32			33				34											36
Y																									
Z																									

JOHNSTOWN TWP

ROCK COUNTY WI

IF AVAILABLE  
ROCK COUNTY COORDINATES PREFERRED

North \_\_\_\_\_ Elev. \_\_\_\_\_

East \_\_\_\_\_

Hor. Datum \_\_\_\_\_ Vert. Datum \_\_\_\_\_

LATITUDE \_\_\_\_\_ ELLIPS. HT. \_\_\_\_\_

LONGITUDE \_\_\_\_\_

GPS (X) \_\_\_\_\_ TRAVERSE (X) \_\_\_\_\_

BASED ON THE FOLLOWING CONTROL:

PLACE MONUMENT SYMBOL  AT PROPER LOCATION ON ABOVE INDEX

CORNER MONUMENT

WITNESS MONUMENT

(a)

BEARINGS ARE BASED ON: \_\_\_\_\_

FIELD BOOK \_\_\_\_\_ PAGE # \_\_\_\_\_

SHEET 1 OF 2

SHOW A PLAN VIEW DRAWING DEPICTING THE CORNER MONUMENT AND SURROUNDING PHYSICAL FEATURES, INCLUDING THE EXCAVATION AREA AND DEPTH.

PLANNING & ZONING COMMITTEE ADOPTED THE ABOVE FORM ON 12/2/1982

CORNER CODE X-7

J08615

*(B) Describe any record evidence, monument evidence, occupational evidence, testimonial evidence or any other material evidence you considered, and whether the monument was found or placed.*

**1885 RUGER VOL 2 PG 288 & MAP #5977 SET STAKE SURROUNDED BY 4 HARD HEADS. 2700.06' TO E ¼ COR SEC 32, 2628.38' TO W ¼ COR SEC 32, & 2644.29' TO S ¼ COR SEC 32.**

**FOUND PK 0.5' NORTH OF CENTER OF PVMT. & REFERENCED SAME. PK WILL BE GROUND OUT & ROAD REPAVED.**

*C) Was the corner restored through acceptance of (1) an obliterated evidence location, or, (2) a found perpetuated location?*

**DID NOT ACCEPT NOR REJECT PK. PERPETUATED LOCATION.**

*D) Describe any material discrepancy between the location of the corner as restored or reestablished and the location of that corner as previously restored or reestablished by distance and direction. Show the discrepancy on the plan view drawing under (a), above. Show the distances between the corner as previously restored or reestablished and (1) the corner as restored or reestablished, and (2) to at least 4 of the witness monuments shown on the drawing in (a), above.*

*(E) Was the corner reestablished through lost corner proportionate methods? If so, show the method, including the directions and distances to other public land survey corners used as evidence or used for proportioning the corner location.*

**I, Donald Barnes, hereby certify that the corner location as identified by the corner code index was determined by me under my direction and control and that this U.S. Public Land Survey Monument Record is correct and complete to the best of my knowledge and belief.**

seal



emboss

05262000

Number of included sheets **1**

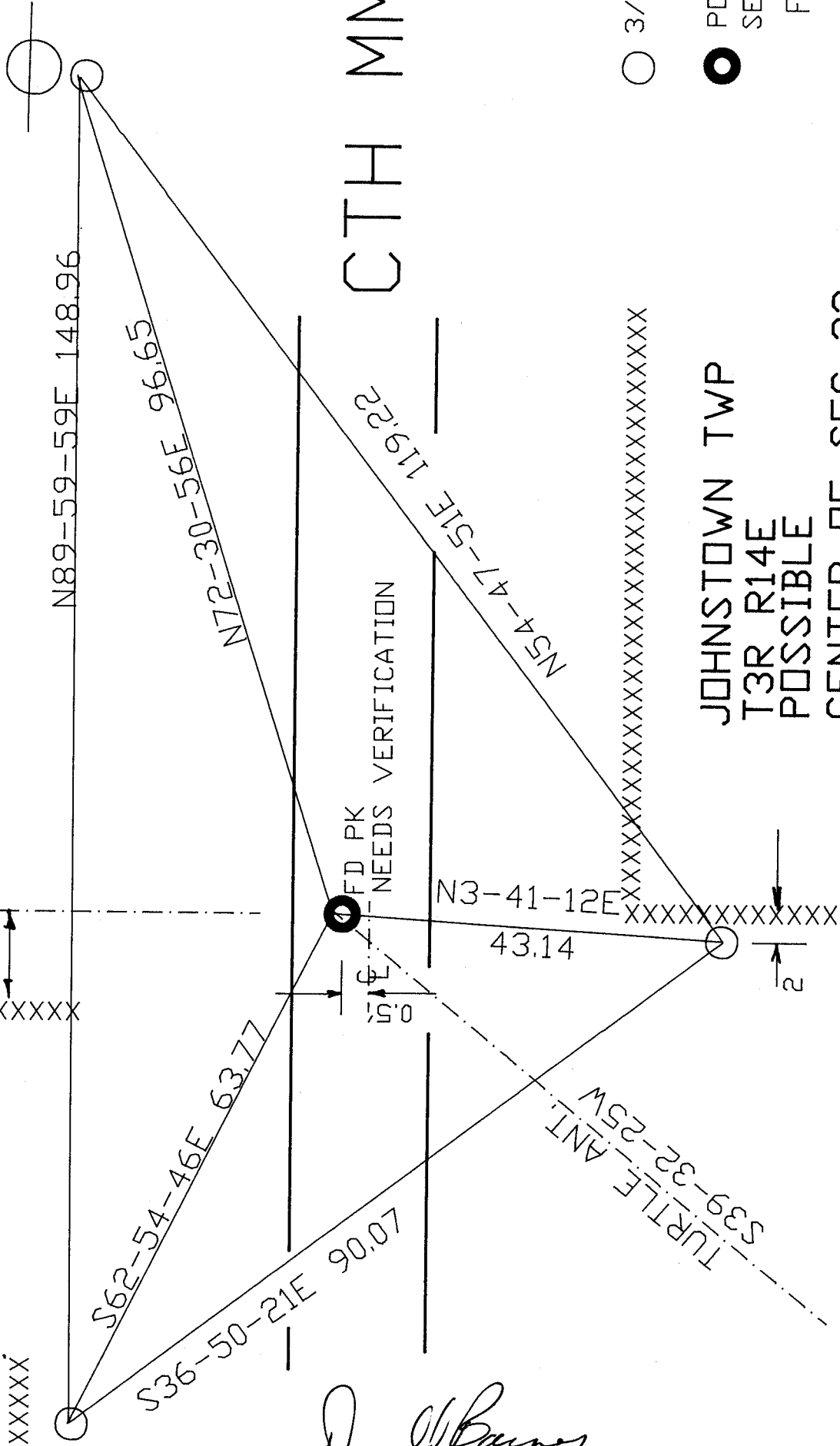
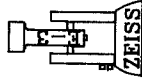
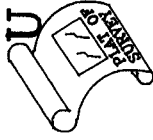
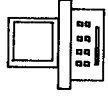
CORNER CODE **X-7**

**A-E 7.08 REQUIREMENT**

**A**

ASSUMED

**OROV SURVEY**  
C K COUNTY



**CTH MM**

**JOHNSTOWN TWP  
T3R R14E  
POSSIBLE  
CENTER OF SEC 32**

○ 3/4X24" RERODD/CAP

● POSSIBLE CENTER OF SEC 32

FB #2 PG 37

PK WILL BE DESTROYED BY ROAD CONSTRUCTION

*Donald Barnes*

EMBOSSED SEAL AT 26, 2000

X 7