

# U.S. PUBLIC LAND SURVEY MONUMENT RECORD

For Public Land Survey Corners in:

WI ADMINISTRATIVE CODE A-E 7.08 REQUIREMENT

T. 3N., R. 14E

### CORNER CODE INDEX

JOHNSTOWN TWP

ROCK COUNTY WI

IF AVAILABLE  
ROCK COUNTY COORDINATES PREFERRED

A	1	2	3	4	5	6	7	8	9	10	11	12	13	14	15	16	17	18	19	20	21	22	23	24	25
B	6					9					12				15							18			
C																									
D																									
E																									
F																									
G	1					8					11				14							17			
H																									
I																									
J																									
K																									
L	18					11					14				17							20			
M																									
N																									
O																									
P	19					20					21				22							23			
Q																									
R																									
S																									
T																									
U	30					29					28				27							26			
V																									
W																									
X	31					32					33				34							35			
Y																									
Z																									

North \_\_\_\_\_ Elev. \_\_\_\_\_

East \_\_\_\_\_

Hor. Datum \_\_\_\_\_ Vert. Datum \_\_\_\_\_

LATITUDE \_\_\_\_\_ ELLIPS. HT. \_\_\_\_\_

LONGITUDE \_\_\_\_\_

GPS (X) \_\_\_\_\_ TRAVERSE (X) \_\_\_\_\_

BASED ON THE FOLLOWING CONTROL:

PLACE MONUMENT SYMBOL  AT PROPER LOCATION ON ABOVE INDEX

CORNER MONUMENT       WITNESS MONUMENT

BEARINGS ARE BASED ON: \_\_\_\_\_

FIELD BOOK \_\_\_\_\_ PAGE # \_\_\_\_\_

SHEET 1 OF 2

SHOW A PLAN VIEW DRAWING DEPICTING THE CORNER MONUMENT AND SURROUNDING PHYSICAL FEATURES, INCLUDING THE EXCAVATION AREA AND DEPTH.

PLANNING & ZONING COMMITTEE ADOPTED THE ABOVE FORM ON 12/2/1982

CORNER CODE X-17

JO#618

(B) Describe any record evidence, monument evidence, occupational evidence, testimonial evidence or any other material evidence you considered, and whether the monument was found or placed.

- 1864 LOCKE VOL 1 PG 221 FOUND OLD STAKE SET RED HH 13X7X4. 2650.89' TO CENTER OF SEC 34 & 5301.78' TO W ¼ COR SEC 34.
- 1905 RUGER VOL 5 PG 321 FOUND CORNER AS SET BY SELF IN FORMER SURVEY. 2648.58' VAR 1-40 TO CENTER OF SEC 35, 5290.56' TO E ¼ COR SEC 35 & 2638.68' TO NW COR SEC 35.
- 1935 SUNNY VOL 3 PG 282 FOUND 4"X7"X3" RED HH AT THE E ¼ COR OF SEC 34 SET BY LOCKE IN 1864, ABOUT 2' BELOW SURFACE OF ROAD. SET IRON PIPE ON TOP WITHIN 4" BELOW SURFACE OF ROAD. MONUMENT IS IN LINE WITH FENCE SOUTH & 1' WEST OF FENCE LINE TO NORTH. SHOWS 27.8' TO E/W FENCE TO THE NORTH & 33.8' TO E/W FENCE TO THE SOUTH WITH THE STATEMENT "MEASURE TO THE NEAR SIDE OF FENCE".
- 1937 SUNNY VOL 3 PG 360 FOUND LOCKE'S RED HH. SET 1 ½ X8 PIPE WITH CAP FOR CORNER. REFERENCED SAME.
- 1977 BARNES VOL 5 PG 237 FOUND CAPPED MON. 0.3' BELOW ROAD SURFACE. REFERENCED SAME. MON. 4.1' NORTH CENTER OF PVMT.
- 1977 BARNES VOL 5 PG 358 FOUND 2X8" IP CAPPED. SET ALUM. MON.
- 1983 BARNES REMONUMENTATION PROJECT; N88-38-50W 5304.46' (LOCKE 5301.78) TO W ¼ COR SEC 34; S88-36-57E 5289.42 (RUGER 5289.9) TO E ¼ COR SEC 35; N1-06-24W 2642.00 (LOCKE 2650.39) TO NE COR SEC 34; & S1-09-33E 2636.89 TO SE COR SEC 34.

FOUND ALUM. MON. 0.15' DEEP & 3.7' NORTH OF CENTER OF PVMT. & NE, NW, & SOUTH REFERENCE PIPES.

C) Was the corner restored through acceptance of (1) an obliterated evidence location, or, (2) a found perpetuated location?

ACCEPTED FOUND MONUMENT.

D) Describe any material discrepancy between the location of the corner as restored or reestablished and the location of that corner as previously restored or reestablished by distance and direction. Show the discrepancy on the plan view drawing under (a), above. Show the distances between the corner as previously restored or reestablished and (1) the corner as restored or reestablished, and (2) to at least 4 of the witness monuments shown on the drawing in (a), above.

(E) Was the corner reestablished through lost corner proportionate methods? If so, show the method, including the directions and distances to other public land survey corners used as evidence or used for proportioning the corner location.

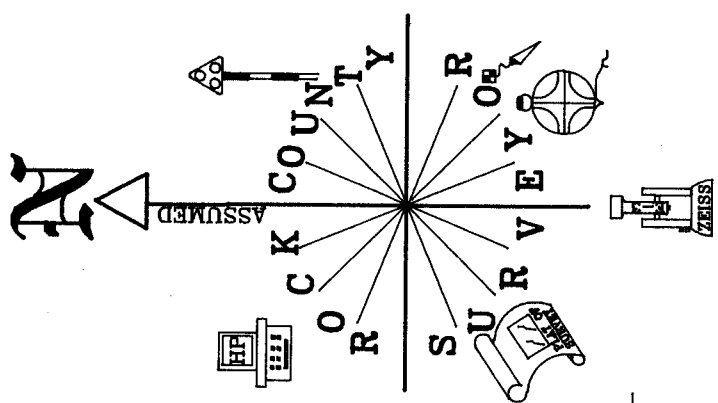
I, Donald Barnes, hereby certify that the corner location as identified by the corner code index was determined by me under my direction and control and that this U.S. Public Land Survey Monument Record is correct and complete to the best of my knowledge and belief.

seal  
Donald Barnes  
emboss OCT 26 2000

Number of included sheets 1

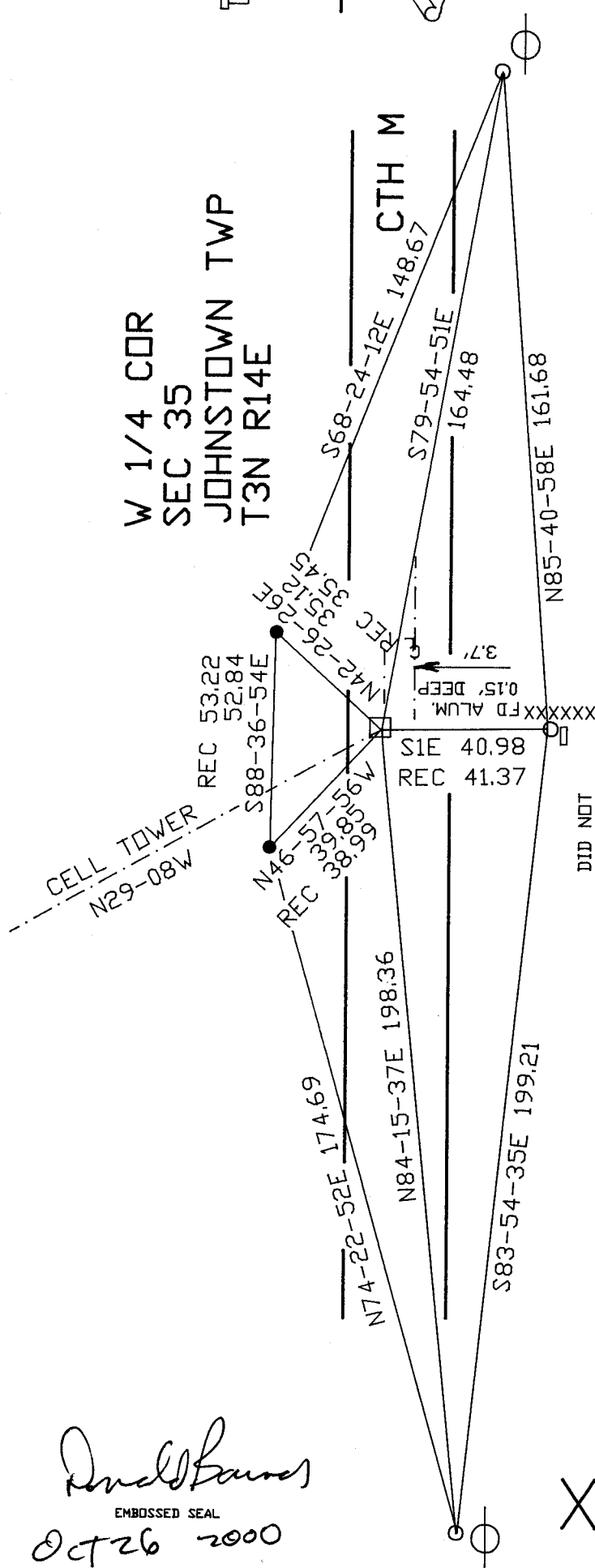
CORNER CODE X-17

A-E 7.08 REQUIREMENT



OBSERVATION SHEET

W 1/4 COR  
 SEC 35  
 JOHNSTOWN TWP  
 T3N R14E



- FD 1 1/2" PIPE IN CORN FIELD.
- 3/4X24" REROD/PLASTIC CAP
- CARSONITE POST

*Dwight Barnes*  
 EMBOSSED SEAL  
 OCT 26 2000

X-17