

U.S. PUBLIC LAND SURVEY MONUMENT RECORD

For Public Land Survey Corners in:

WI ADMINISTRATIVE CODE A-E 7.08 REQUIREMENT

T. 3 N., R. 14 E

CORNER CODE INDEX


JOHNSTOWN TWP

ROCK COUNTY WI

IF AVAILABLE

ROCK COUNTY COORDINATES PERFERRED

A	1	2	3	4	5	6	7	8	9	10	11	12	13	14	15	16	17	18	19	20	21	22	23	24	25
B																									
C	6																								
D																									
E																									
F	7																								
G																									
H																									
I																									
J																									
K	18																								
L																									
M																									
N																									
O																									
P	19																								
Q																									
R																									
S	30																								
T																									
U																									
V																									
W																									
X	31																								
Y																									
Z																									

PLACE MONUMENT SYMBOL  AT PROPER LOCATION ON ABOVE INDEX

North _____ Elev. _____

East _____


Hor. Datum _____ Vert. Datum _____


LATITUDE _____ ELLIPS. HT. _____

LONGITUDE _____

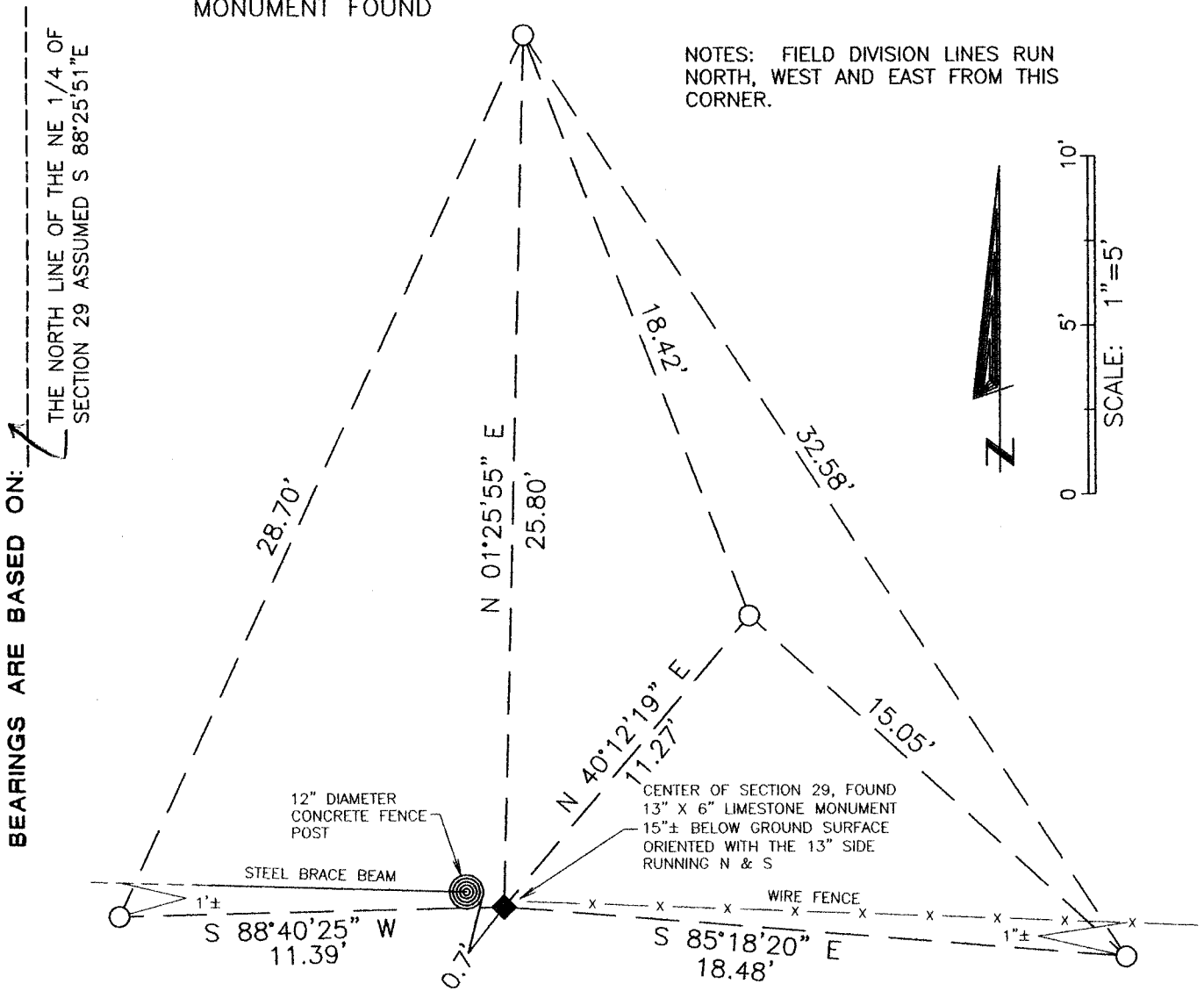
GPS (X) _____ TRAVERSE (X) _____

BASED ON THE FOLLOWING CONTROL:

 CORNER MONUMENT
13" X 6" LIMESTONE MONUMENT FOUND

 WITNESS MONUMENT
3/4" X 18" REBAR SET

(a)



FIELD BOOK _____ PAGE # _____

SHEET 1 OF 2

SHOW A PLAN VIEW DRAWING DEPICTING THE CORNER MONUMENT AND SURROUNDING PHYSICAL FEATURES, INCLUDING THE EXCAVATION AREA AND DEPTH.

PLANNING & ZONING COMMITTEE ADOPTED THE ABOVE FORM ON 12/2/1982

CORNER CODE T-7

(B) Describe any record evidence, monument evidence, occupational evidence, testimonial evidence or any other material evidence you considered, and whether the monument was found or placed.

I found a 13" X 6" limestone monument approximately 15" below ground surface at the Center of Section 29. County Surveyor S.D. Locke set a 30" X 13" X 6" limestone monument at this corner on October 13, 1865 (County Surveyor Records 1851-1869, P. 224). County Surveyor C.V. Kerch found this stone on June 1, 1901 (V. 4, P. 3, County Surveyor Records). I measure 2636.55' between this corner and the North 1/4 corner of Section 29 (Locke measured 39.902 ch. or 2633.5'). I measure 2625.24' between this corner and the East 1/4 corner of Section 29 (Locke measured 39.764 ch. or 2624.4'). I accepted the limestone monument as the Center of Section 29 and set four witness monuments as shown in (a) above.

C) Was the corner restored through acceptance of (1) an obliterated evidence location, or, (2) a found perpetuated location?

The corner was established through a found perpetuated location.

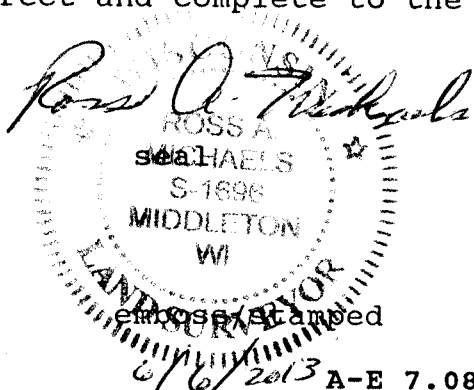
D) Describe any material discrepancy between the location of the corner as restored or reestablished and the location of that corner as previously restored or reestablished by distance and direction. Show the discrepancy on the plan view drawing under (a), above. Show the distances between the corner as previously restored or reestablished and (1) the corner as restored or reestablished, and (2) to at least 4 of the witness monuments shown on the drawing in (a), above.

There are no known discrepancies with this corner. It "fits" the occupation evidence shown in (a) above. The measurement differences listed in (B) above are well within tolerances considering the measurement tools available in 1865 and the possibility that the North 1/4 corner (in C.T.H. "A") and the East 1/4 corner may not be exactly where they were in 1865.

(E) Was the corner reestablished through lost corner proportionate methods? If so, show the method, including the directions and distances to other public land survey corners used as evidence or used for proportioning the corner location.

This corner is not a lost corner.

I, *Ross A. Michaels*, hereby certify that the corner location as identified by the corner code index was determined by me under by direction and control and that this U.S. Public Land Survey Monument Record is correct and complete to the best of my knowledge and belief.



DATE OF SURVEY: *6/3/2013*

SHEET 2 OF 2

Number of included sheets 2

CORNER CODE

T-7