

Paper weight-110# (minimum)

Black nonfading ink required

# U.S. PUBLIC LAND SURVEY MONUMENT RECORD

For Public Land Survey Corners In:  
T. 1 N. R. 14 E. 4th P.M.  
CORNER CODE INDEX

WI ADMINISTRATIVE CODE A-E 7.08 REQUIREMENT  
REV 10/23/2004 USMONREC.DWG

CLINTON TWP  
ROCK COUNTY WI

IF AVAILABLE  
ROCK COUNTY COORDINATES PREFERRED

1	2	3	4	5	6	7	8	9	10	11	12	13	14	15	16	17	18	19	20	21	22	23	24	25	
A																									A
B																									B
C																									C
D																									D
E																									E
F																									F
G																									G
H																									H
J																									J
K																									K
L																									L
M																									M
N																									N
O																									O
P																									P
Q																									Q
R																									R
S																									S
T																									T
U																									U
V																									V
W																									W
X																									X
Y																									Y
Z																									Z

North \_\_\_\_\_ Elev. \_\_\_\_\_

East \_\_\_\_\_

Hor. Datum \_\_\_\_\_ Vert. Datum \_\_\_\_\_

LATITUDE \_\_\_\_\_ ELLIPS. HT. \_\_\_\_\_

LONGITUDE \_\_\_\_\_

NAD83(91) \_\_\_\_\_ NETWORK ADJ. YR \_\_\_\_\_

GPS (X) \_\_\_\_\_ TRAVERSE (X) \_\_\_\_\_

BASED ON THE FOLLOWING CONTROL:

PLACE MONUMENT SYMBOL  AT PROPER LOCATION ON ABOVE INDEX

CORNER MONUMENT

WITNESS MONUMENT

BEARINGS ARE BASED ON: -----

FIELD BOOK \_\_\_\_\_ PAGE # \_\_\_\_\_

SHEET 1 OF 4

SHOW A PLAN VIEW DRAWING DEPICTING THE CORNER MONUMENT AND SURROUNDING PHYSICAL FEATURES, INCLUDING THE EXCAVATION AREA AND DEPTH.

PLANNING & ZONING COMMITTEE ADOPTED THIS FORM ON 12/2/1982

CORNER CODE E-7(3)

CL524 N1/4CORSECB

(B) Describe any record evidence, monument evidence, occupational evidence, testimonial evidence or any other material evidence you considered, and whether the monument was found or placed.

- 1877 RUGER VOL 2 PG 224 FD REMAINS OF OLD STAKE IN THE CENTRE OF THE HIGHWAY & ON THE E. EDGE OF TRAVELED TRACKS AS ??? PUT IN THE PLACE OF OLD STAKE LIMESTONE 22X12X7 SURROUNDED IT BY 5 HH STONES, HOLMES & HAMMOND WAS PRESENT WHEN I FOUND THE OLD STAKE & RENEWED THE CORNER. VAR 3-35 1323.96 TO N 1/16TH COR OF THE NW 1/4 OF SEC 8, VAR 3-35 2647.92 TO NW COR SEC 8, VAR 3-35 2653.2 TO CENTER OF SEC 8.
- 1878 RUGER VOL 2 PG 258 FD COR EST BY SELF IN THE SURVEY OF SEC 8. USED TO SUBDIVIDE SEC 5. CENTER OF SEC 5 TO E 1/4 COR SEC 5 IS VAR3-06 2648.25
- 1881 LEE VOL 6 PG 72 [SAME INFORMATION AS IN #876] THE PLAT OF SURVEY BY R. LEE IN 1881 IS FRAMED IN THE CLINTON CITY HALL.
- 1881 LEE #876 FD RED HH AT CENTER N5-05W 2641.58 TO FD STAKE & STONE BY RUGER @ N 1/4 COR SEC 8, S5-05E 2641.58 TO FD RED HH AT CENTER OF SEC 8, & 1320.66 FROM N 1/16TH COR OF NE 1/4 OF SEC 8 TO NE COR SEC 8.
- 1881 LEE VOL 2 PG 320 FD STAKE & STONES SET BY RUGER. 1320.66 TO N 1/16TH COR OF NE 1/4 SEC 8, 2641.32 TO NE COR SEC 8.
- 1905 KERCH VOL 3 PG 29 FD 1/4 SEC COR. AS DESCRIBED BY RUGER S. SIDE SEC 5. DROVE GAS PIPE & PLACED LARGER HH ON S. SIDE 1322.5 BETWEEN THE N 1/4 & NE CORNERS OF SEC 8.
- 1930 SUNNY? VOL 3 PG 182 FD GAS PIPE. REFERENCED SAME. CUT HOLE IN CONCRETE T5-32. RESET MON. WITH 1" PIPE 2' LONG & FLUSH WITH CONCRETE PVMT. 4.6' E OF CENTER OF PVMT.
- 1939 SUNNY VOL 3 PG 422 FD PIPE MONUMENT IN CONCRETE PAVEMENT. 2661.0 TO CEN OF SEC 8. SOUTHERLY 1264.5 TO NW COR OF LOT; NW COR LOT TO NE COR (PIPE) OF LOT IS 210.9. WIDTH OF LOT IS 66.0
- 1939 SUNNY #857 FD PIPE IN CONC. 2661.0X TO CEN OF SEC 8
- 1943 SUNNY #824 FD PIPE 4.2 E OF CENTER OF CONC. PVMT.
- 1960 WIDOT E-7 CALLS FOR COR 4.5 EAST OF CENTER OF PVMT. STATES NOTHING ABOUT MON. REFERENCED WITH REFERENCE PIPES.
- 1966 BATTERMAN VOL 4 PG 252 PENCELED NOTE: SEE ALSO VOL 6 PG 141. STATES NOTHING ABOUT MON. FD CUT CROSSES TO NE & SE. SET RR SPIKES IN POWER POLES FOR ADDITIONAL REFERENCES.
- 1967 LEE #2020, #02022& #6313 SET BRASS PLUG @ CENTER OF SEC 8. NO-03-15E 2660.62 TO N 1/4 COR SEC 8,
- 1972 BATTERMAN CSM VOL 2 PG 238 FD IRON PIPE
- 1972 LEE CSM VOL 2 PG 341 STATES NOTHING ABOUT MON.
- 1972 LEE CSM VOL 3 PG 56 STATES NOTHING ABOUT MON.
- 1973 LEE CSM VOL 3 PG 135 LEGEND CALLS FOR SETTING PIPE
- 1979 COMBS CSM VOL 10 PG 252 FD IRON PIPE
- 1981 LEE CSM VOL 10 PG 257 LEGEND CALLS FOR CI
- 1981 BARNES VOL 6 PG 141 FD PK AS PREVIOUSLY SET. FD 1X24 IRON PIPE 0.6 DEEP. REPLACED WITH ALUM. MON. 4' EAST OF CENTER OF PVMT.
- 1982 WIDOT #12410 STH 104 PG 15 SHEET 4.5 #1093-1-21 2/64
- 1982 BARNES E-7(1) FD BROKEN ALUM. MON. SET SPIKE ALUM MON ON TOP OF BROKEN ONE. 4.5 EAST OF CENTER OF PVMT. FD WIDOT REFERENCE PIPES. ROAD RESURFACED IN SUMMER OF 1982. 208,470; 2,305,787
- 1984 HEIDT P 32 PG 13 "BEYER'S ADDITION" FD ALUM. MON.
- 198? WIDOT #834 TIES FOR CORNER. 4.5 EAST OF CENTER LINE. 1/2" REFERENCE PIPES.

SHEET 1 OF 4

CORNER CODE E-7(3)

*Dwight K. Jones*  
9/29/08

CL524 N1/4CORSECB

- 1986 KREBS CSM VOL 12 PG 431 FD ALUM. MON.  
1986 COMBS CSM VOL 12 PG 451 FD ALUM. MON.  
1992 SCHROEDER #11342 STATES NOTHING ABOUT MON.  
1994 GORDON CSM 18 PG 16 FD ALUM @ S 1/4 COR SEC 8,  
CENTER OF SEC 8, & N 1/4 COR SEC 8. CEN SEC 5 TO S 1/4  
COR SEC 8 SO-19-07E 2660.70, CEN OF SEC 5 TO N 1/4  
COR SEC 5 2351.93  
1995 GORDON CSM VOL 18 PG 116 FD ALUM. MON. 2653.82 TO  
FD ALUM. MON. @ NW COR SEC 8  
1995 GORDON BOOK 32 PG 281 FD ALUM. MON. N89-43-39W  
2653.82 TO FD ALUM. MON. @ NW COR SEC 8. 208,470;  
2,305,787 @ N 1/4 COR SEC 8 & 208,529; 2,303,134 @ NW  
COR SEC 8.  
1995 GORDON CSM VOL 18 PG 232 FD ALUM MON. 2653.82 TO  
ALUM @ NW COR SEC 8. 208,470; 2,305,787 @ N 1/4 COR  
SEC 8 & 208,529; 2,303,134 @ NW COR SEC 8  
1995 SHROEDER CSM VOL 18 PG 403 STATES NOTHING ABOUT  
MON.  
1996 GORDON "COUNTRY WALK" BK 32 PG 341 FD ALUM @ N 1/4  
COR SEC 5, N 1/4 COR SEC 8, & CENTER OF SEC 8. GRID  
BEARINGS REFERENCED TO WIS. SOUTH ZONE. CEN SEC 8  
TO N 1/4 COR SEC 8 NO-19-07W 2660.70, N 1/4 COR SEC 8  
TO N 1/4 COR SEC 5 NOO-05-58E 5650.11. COORDNATES OF  
208,470N/S ??2,305.787 E/W, SO-19-07E 57.72 ALONG  
SEC LINE FROM N 1/4 COR SEC 8 TO PROPERTY COR., FROM  
PROPERTY COR THENCE N89-44-14E 28.08; THENCE N89-  
44-14E 17.08; THEMNCE N89-44-14E 454.55 TO PROPERTY  
COR.  
1997 MARKS #8700 FD 3/4" ROD. @ S 1/4 COR SEC 5-  
208,478.22; 2,274,252.18 N88-02-48W 2654.83 TO ALUM  
@ SW COR SEC 5, NO-44-05E FROM S 1/4 COR SEC 5 TO N  
1/4 COR SEC 5 PER COUNTY COORDINATES. 208,536.94;  
2,271,598.80 @ W 1/4 COR SEC 8, & 211,194.98;  
2,271,601.70 ALUM @ SW COR SEC 5. NO-42-08E 2658.05  
FROM SW COR SEC 5 TO W 1/4 COR SEC 5.  
1997 GORDON CSM VOL 20 PG 112 FD ALUM @ CENTER & N 1/4  
COR SEC 8. N 1/4 COR SEC 8 TO CEN SEC 8 SO-19-07E  
2660.70, SO-19-07 E 57.72 TO PROPERTY COR., FROM  
PROPERTY COR N89-44-14E 45.16 TO PROPERTY COR ON  
EASTERN R/W LINE; THENCE N89-44-14E 437.47 TO  
PROPERTY COR.  
1996 KREBS CSM VOL 19 PG 76 FD ALUM. MON. S88-20-34E  
2645.48 TO NE COR SEC 8 & SOUTH ALONG N/S 1/4 LINE  
OF SEC 8.  
1998 COMBS #8338 STATES NOTHING ABOUT MON.  
1998 KREBS CSM VOL 22 PG 67 FD ALUM. MON. 2645.53 TO FD  
BROKEN CONC. MON. @ NE COR SEC 8  
1998 COMBS CSM VOL 21 PG 269 FD IRON PIN. 5315.45 TO R/R  
SPIKE @ S 1/4 COR SEC 8.  
1999 KREBS CSM VOL 22 PG 496 FD ALUM. MON. N88-47-30W  
2653.82 TO FD ALUM. MON. @ NW COR SEC 8, NORTH  
2647.93 TO FD CONC. MON. @ W 1/4 COR SEC 5  
1999 BARNES E-7(2) FD ALUM. MON. WITH TOP BROKE OFF.  
REFERENCED ALUM. MON.  
2001 HOULE BOOK 32 PG 532 FD ALUM. MON. @ N 1/4 COR SEC  
8. S88-26-02E 2645.53 TO FD CONC. @ NE COR SEC 8.  
2006 GORDON #15360 LEGEND CALLS FOR CONC. MON.  
208,470; 2,305,787 N88-43-39W 2653.82 TO NW COR SEC  
8 (208,529; 2,303,134); NW TO W 1/4 COR SEC 8 SO-35-29E  
2655.82, NE COR SEC 7 TO N 1/4 COR SEC 7 IS S89-53-26E  
2651.84

*Donald J. Karses*  
9/29/08

CL524 N1/4CORSEC8

PRIOR TO CONSTRUCTION, I LOCATED AND MEASURED TO THE REFERENCE MONUMENTS. I GAVE THE WIDOT PROJ. ENG. AN ALUM MON. WHICH THEY PLACED AT THE LOCATION THAT I MARKED & VERIFIED.

3

C) Was the corner restored through acceptance of (1) an obliterated evidence location, or, (2) a found perpetuated location?

ACCEPTED FD PERPETUATED LOCATION

D) Describe any material discrepancy between the location of the corner as restored or reestablished and the location of that corner as previously restored or reestablished by distance and direction. Show the discrepancy on the plan view drawing under (a), above. Show the distances between the corner as previously restored or reestablished and (1) the corner as restored or reestablished, and (2) to at least 4 of the witness monuments shown on the drawing in (a), above.

NONE

(E) Was the corner reestablished through lost corner proportionate methods? If so, show the method, including the directions and distances to other public land survey corners used as evidence or used for proportioning the corner location.

I, **Donald Barnes**, hereby certify that the corner location as identified by the corner code index was determined by me under my direction and control and that this U.S. Public Land Survey Monument Record is correct and complete to the best of my knowledge and belief.

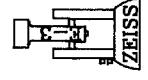
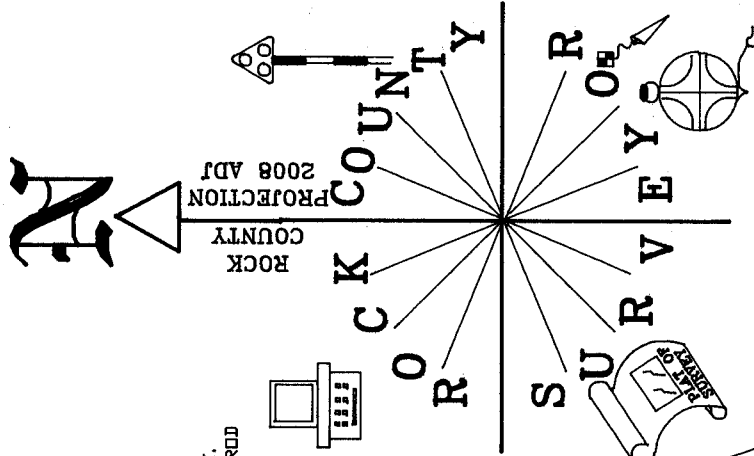
Seal  
Donald

Embloss  
Barnes  
9/29/08

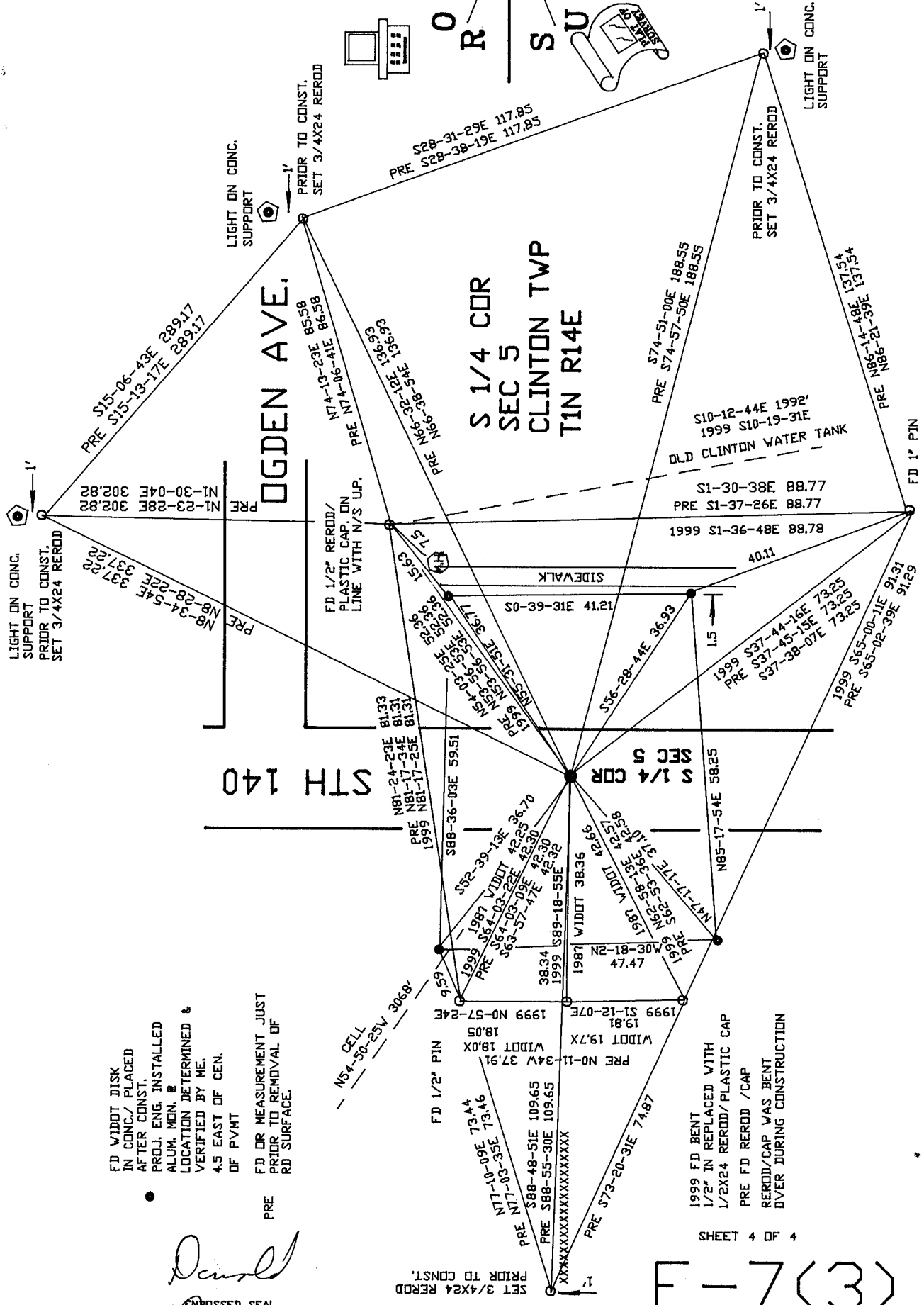
SHEET 3 OF 4

CORNER CODE **E-7(3)**

A.E. 7.08 REQUIREMENT



NOT TO SCALE  
OBSERVATION SHEET #524



FD WIDOT DISK IN CONG./ PLACED AFTER CONST. PROJ. ENG. INSTALLED ALUM. MON. @ LOCATION DETERMINED & VERIFIED BY ME. 4.5 EAST OF GEN. OF PVMT

PRE FD OR MEASUREMENT JUST PRIOR TO REMOVAL OF RD SURFACE.

N54-30-25W 306.8'

1999 FD BENT 1/2" IN REPLACED WITH 1/2X24 REROD / PLASTIC CAP  
PRE FD REROD / CAP REROD/CAP WAS BENT OVER DURING CONSTRUCTION

*David Barnes*  
EMBOSSSED SEAL  
9/29/08

E-7(3)

SET 3/4X24 REROD PRIOR TO CONST.

SHEET 4 OF 4