

Paper weight-110# (minimum)

Black nonfading ink required

# U.S. PUBLIC LAND SURVEY MONUMENT RECORD

For Public Land Survey Corners In:

WI ADMINISTRATIVE CODE A-E 7.08 REQUIREMENT

T. 3 N. R. 14 E. 4th P.M.

REV 10/23/2004

USMONREC.DWG

CORNER CODE INDEX

JOHNSTOWN TWP

ROCK COUNTY WI

IF AVAILABLE

ROCK COUNTY COORDINATES PREFERRED

	1	2	3	4	5	6	7	8	9	10	11	12	13	14	15	16	17	18	19	20	21	22	23	24	25		
A																											A
B																											B
C																											C
D																											D
E																											E
F																											F
G																											G
H																											H
J																											J
K																											K
L																											L
M																											M
N																											N
O																											O
P																											P
Q																											Q
R																											R
S																											S
T																											T
U																											U
V																											V
W																											W
X																											X
Y																											Y
Z																											Z

North \_\_\_\_\_ Elev. \_\_\_\_\_

East \_\_\_\_\_

Hor. Datum \_\_\_\_\_ Vert. Datum \_\_\_\_\_

LATITUDE \_\_\_\_\_ ELLIPS. HT. \_\_\_\_\_

LONGITUDE \_\_\_\_\_

NAD83(91) \_\_\_\_\_ NETWORK ADJ. YR \_\_\_\_\_

GPS (X) \_\_\_\_\_ TRAVERSE (X) \_\_\_\_\_

BASED ON THE FOLLOWING CONTROL:

PLACE MONUMENT SYMBOL  AT PROPER LOCATION ON ABOVE INDEX

CORNER MONUMENT

WITNESS MONUMENT

(a)

BEARINGS ARE BASED ON: ROCK COUNTY PROJECTION

FIELD BOOK \_\_\_\_\_ PAGE # \_\_\_\_\_

OR OBSERVATION SHEET \_\_\_\_\_

SHEET 1 OF 3

SHOW A PLAN VIEW DRAWING DEPICTING THE CORNER MONUMENT AND SURROUNDING PHYSICAL FEATURES, INCLUDING THE EXCAVATION AREA AND DEPTH.

PLANNING & ZONING COMMITTEE ADOPTED THIS FORM ON 12/2/1982

CORNER CODE X-17(2)

J0618 E1/4CORSEC34

(B) Describe any record evidence, monument evidence, occupational evidence, testimonial evidence or any other material evidence you considered, and whether the monument was found or placed.

- 1845 EGS JT2 PG 5  
1856 ABM JT1 PG 23  
1864 LOCKE VOL 1 PG 221 FD OLD STAKE SET REDHARD 13X7X4.  
2650.89 TO CENTER OF SEC 34, 5301.78  
TO W 1/4 COR SEC 34, 1092.3 TO SE RD  
1905 RUGER VOL 5 PG 321 FD COR AS SET BY SELF IN FORMER  
SURVEY. VAR1-40 2648.58 TO CENTER OF SEC 35, VAR 1-40  
5290.56 TO E 1/4 COR SEC 35  
1935 SUNNY VOL 3 PG 282 FD 4X7X13 RED HH AT THE E 1/4 COR  
OF SEC 34, SET BY S.D. LOCKE IN 1864, ABOUT 2' BELOW  
SURFACE OF ROAD. SET IRON PIPE ON TOP WITHIN 4" +/-  
BELOW SURFACE OF RD. ON LINE WITH N/S FENCE ON  
SOUTH & 1' WEST OF N/S FENCE ON NORTH SIDE OF RD.  
27.8 TO FENCE INT ON NORTH SIDE, 33.8 TO FENCE INT ON  
SOUTH SIDE  
1937 SUNNY VOL 3 PG 360 FD LOCKE'S RED HH. SET 1 1/2 X 8  
PIPE WITH CAP ON TOP FOR CORNER. REFERENCED SAME. 1  
WEST OF N/S FENCE ON NORTH SIDE.  
1963 SCHIMEALL #2437 PIPE @ E 1/4 COR SEC 34, WEST 1086.6  
TO PIN @ CENER OF CTH M GOING NW, & WEST 1427.74 TO  
PIN.  
1977 WOODMAN VOL 6 PG 207 FD 1 1/4 PIPE  
1977 BARNES VOL 5 PG 237 LFD CAP MONUMENT 0.3' BELOW RD  
SURFACE. REFERENCED SAME. COR IS 4.1 NORTH OF PVMT  
CENTER  
2000 BARNES X-17 FD ALUM 0.15' DEEP & REFERENCED SAME.  
2010 LATHROP X-17(1) SET PK. FROM REF TIES.  
2010 LATHROP CSM VOL 34 PG 169 SET PK FROM REF  
MONUMENTS. N88-47-27W 5304.36 TO FD ALUM @ W 1/4  
COR SEC 34  
2011 LATHROP #16751 FD PK @ E 1/4 COR SEC 34. S1-18-28E  
2636.89 TO FD ALUM MON @ SE COR SEC 34. S1-18-28E  
33.03 TO REROD, N88-47-27W 2651.24 TO FD ALUM @ W 1/4  
COR SEC 34.

FD PK WITH SOUND OF ALUM MON BELOW IT.

C) Was the corner restored through acceptance of (1) an obliterated evidence location, or, (2) a found perpetuated location?

WITHIN 1-2 YEARS THE ROAD WILL BE RESURFACED. DID NOT ACCEPT NOR REJECT FD PK. ALUM MON NEEDS TO BE UNCOVERED AND MEASUREMENTS TO THE REFERENCE MONUMENTS OBSERVED JUST PRIOR TO REPAVMENT PROJECT.

D) Describe any material discrepancy between the location of the corner as restored or reestablished and the location of that corner as previously restored or reestablished by distance and direction. Show the discrepancy on the plan view drawing under (a), above. Show the distances between the corner as previously restored or reestablished and (1) the corner as restored or reestablished, and (2) to at least 4 of the witness monuments shown on the drawing in (a), above.

NONE

(E) Was the corner reestablished through lost corner proportionate methods? If so, show the method, including the directions and distances to other public land survey corners used as evidence or used for proportioning the corner location.

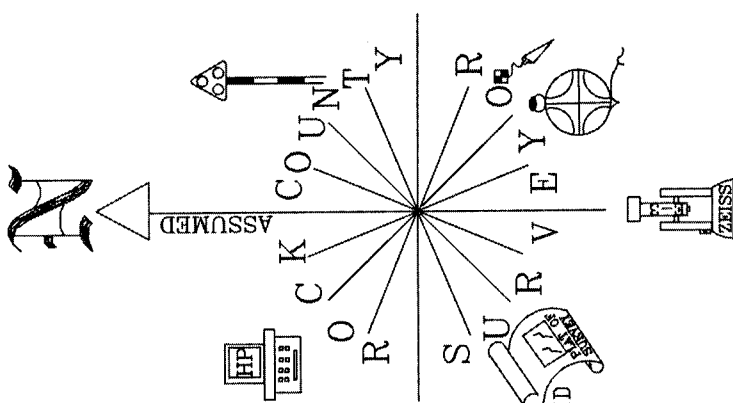
I, Donald Barnes, hereby certify that the corner location as identified by the corner code index was determined by me under my direction and control and that this U.S. Public Land Survey Monument Record is correct and complete to the best of my knowledge and belief.

Donald Barnes  
Embress  
6-20-2012

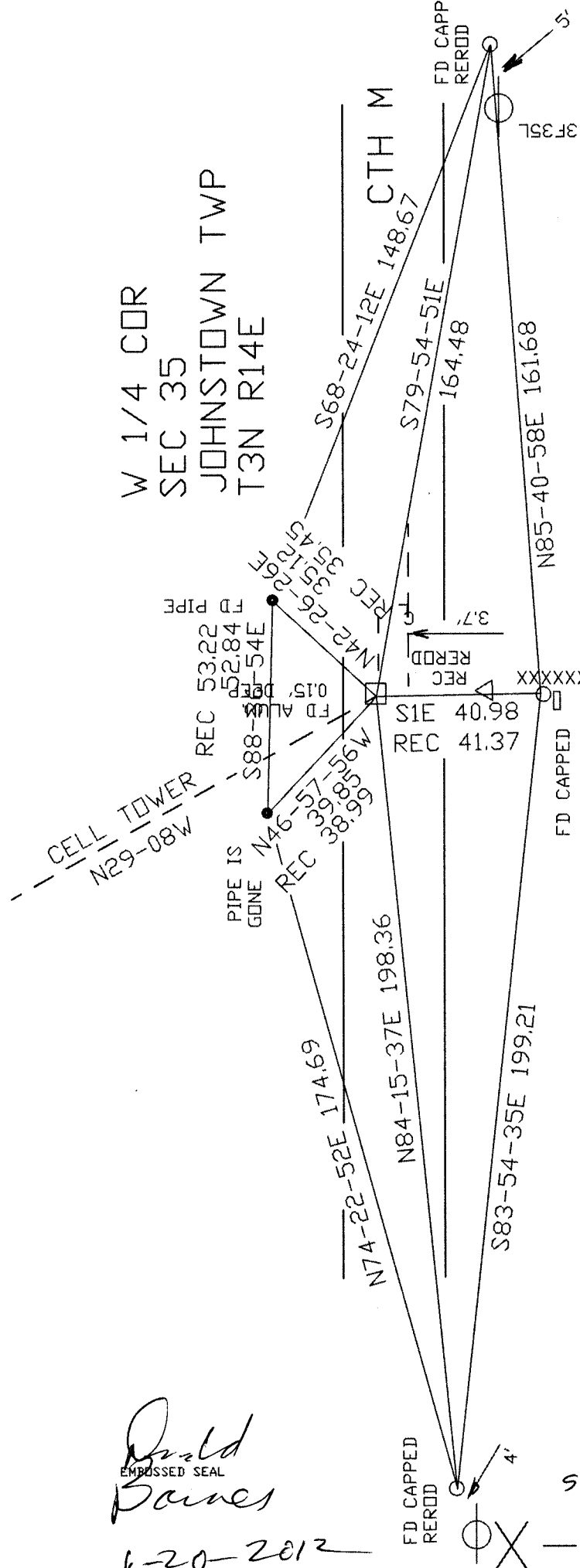
SHEET 1 OF 3

CORNER CODE X-17(2)

A.E. 7.08 REQUIREMENT



W 1/4 COR  
 SEC 35  
 JOHNSTOWN TWP  
 T3N R14E



OBSERVATION SHEET

- FD 1 1/2" PIPE IN CORN FIELD.
- 3/4X24" REROD/ PLASTIC CAP
- CARSONITE POST
- FD PK
- △ REROD FOR #16751

GRINDING WITHIN 1-2 YEARS  
 LOCATED REFERENCE MONUMENTS  
 ONLY. DID NOT MEASURE TO THEM  
 BEARINGS & DISTANCES ARE FROM  
 OCT 26, 2000.

*David James*  
 EMPRESSED SEAL

6-20-2012

SHEET 2 OF 3

OX-17(2)

2012 BARNES S88-53-52E 2655.07  
1983 BARNES TWP S88-45-08E 2655.06  
1886 RUGER 2-271 2657.23

JOHNSTOWN TWP  
SEC 34

2012 INT S88-47-34E 2651.15  
2011 LATHROP #16751 S88-47-27E 2651.24  
1864 LOCKE VOL 1-221 2650.89

1864 LOCKE VOL1-221 5301.78  
1983 BARNES TWP S88-38-50E 5304.46  
2010 COMBS CSM34-169 5304.36  
2012 S88-47-34E 5304.46

2012 INT N1-16-04W 2634.56

SEC 34

1871 RUGER 2-64 2650.23  
1983 BARNES TWP S88-36-12E 2652.59  
2012 BARNES S88-46-12E 2652.57

2012 INT N1-16-04W 2636.03

CTH M

1963 SCHIMMELL #2437 341.14

SEC 34

1983 BARNES TWP S88-46-36E 2653.77  
2012 S88-55-21E 2653.76  
1983 BARNES TWP S88-55-10E 2646.71  
1905 RUGER 5-321 2644.29  
2012 S89-03-58E 2646.76  
1983 BARNES TWP S88-55-10E 2646.71  
1905 RUGER 5-321 2644.29

1864 LOCKE VOL1-221 1092.3  
1963 SHIMEALL #2437 WEST 1086.6  
1864 LOCKE VOL1-221 2650.89  
1905 RUGER VOL 5-321 VARI-40 2648.58  
2011 LATHROP #16751 S88-47-27E 2653.31  
2012 INT S88-47-34E 2653.31

SEC 34

2011 LATHROP #16751 S1-18-28E 2636.89  
2012 BARNES TWP N1-09-33W 2636.89  
1983 BARNES TWP N1-18-20E 2636.89  
1983 BARNES S88-36-55E 2647.00  
2012 S88-45-21E 2647.01  
1905 RUGER 5-321 2646.85

S 1/4 CDR  
SEC 34

SEC 35

1905 RUGER 5-321 2656.34  
2012 INT N1-16-30W 2656.12

SEC 35

E 1/4 CDR  
SEC 34

2012 INT S88-45-43E 2648.39

1905 RUGER 5-321 2648.58

2012 INT N1-16-30W 2637.36

1905 RUGER 5-321 2637.36

1905 RUGER 5-321 2637.36

1905 RUGER 5-321 2637.36

1905 RUGER 5-321 2637.36

1905 RUGER 5-321 2637.36

1905 RUGER 5-321 2637.36

1905 RUGER 5-321 2637.36

1905 RUGER 5-321 2637.36

1905 RUGER 5-321 2637.36

1905 RUGER 5-321 2637.36

1905 RUGER 5-321 2637.36

1905 RUGER 5-321 2637.36

1905 RUGER 5-321 2637.36

1905 RUGER 5-321 2637.36

1905 RUGER 5-321 2637.36

1905 RUGER 5-321 2637.36

1905 RUGER 5-321 2637.36

1905 RUGER 5-321 2637.36

1905 RUGER 5-321 2637.36

1905 RUGER 5-321 2637.36

1905 RUGER 5-321 2637.36

1905 RUGER 5-321 2637.36

1905 RUGER 5-321 2637.36

1905 RUGER 5-321 2637.36

1905 RUGER 5-321 2637.36

2012 BARNES N1-21-26W 2631.35  
1983 BARNES TWP N1-12-42E 2631.35

Paul Barnes  
6-20-2012

W 1/4 CDR  
SEC 34

2012 N1-14-16W 2633.45  
1990 BARNES 6-32 2633.45  
1983 BARNES TWP N1-05-32W 2633.47

8 of 20 SHEET

X-17(2)

2012 S88-16-34E 2644.43  
1983 BARNES TWP S88-07-54E 2644.43  
1909 KERCH 3-55 2643.7

SEC 35

1905 RUGER 5-321 2656.34  
2012 INT N1-16-30W 2656.12

SEC 35

1977 WOODMAN CSM6-207  
2012 BARNES 87-132-11  
87-32-15

2012 S88-45-42E 5289.45  
1983 BARNES TWP S88-36-57E 5289.42  
1905 RUGER VOL 5-321 VARI-40 5290.56  
1905 RUGER 5-321 2641.98  
2012 INT S88-45-42E 2641.06

SEC 35

1905 RUGER 5-321 2637.36  
2012 INT N1-16-30W 2637.36  
1983 BARNES TWP N1-07-47W 2637.36  
2012 BARNES N1-16-30W 2637.36

1983 BARNES TWP N1-16-48W 2634.66  
2012 N01-25-31W 2635.26  
1983 BARNES 92-27-54  
2012 BARNES 87-23-00  
1983 BARNES 87-23-00  
2012 BARNES 87-23-00

2012 S88-48-36E 2636.10

1905 RUGER 5-321 2646.85  
1983 BARNES TWP S88-40-31E 2647.88  
2012 BARNES TWP S88-40-31E 2647.88  
1905 RUGER 5-321 2646.85

2012 S88-45-20E 2634.80

1905 RUGER 5-321 2646.85  
1983 BARNES S88-36-55E 2647.00  
2012 S88-45-21E 2647.01  
1905 RUGER 5-321 2646.85

SE CDR  
SEC 34

1871 RUGER 5-321 2652.32  
1983 BARNES TWP S88-37-12E 2655.09  
2011 LATHROP N88-44-52W 2655.36  
2012 BARNES S88-44-39E 2655.15

S 1/4 CDR

1871 RUGER 2-64 2650.23  
1983 BARNES TWP S88-36-12E 2652.59  
2012 BARNES S88-46-12E 2652.57

8 of 20 SHEET