

U.S. PUBLIC LAND SURVEY MONUMENT RECORD

For Public Land Survey Corners In:

WI ADMINISTRATIVE CODE A-E 7.08 REQUIREMENT

T. 4 N. R. 12 E. 4th P.M.

REV 10/23/2004

USMONREC.DWG

CORNER CODE INDEX

1	2	3	4	5	6	7	8	9	10	11	12	13	14	15	16	17	18	19	20	21	22	23	24	25	
A																									A
B	6					5					4					3					2			1	B
C																									C
D																									D
E																									E
F	7					8					9					10					11			12	F
G																									G
H																									H
J																									J
K	18					17					16					15					14			13	K
L																									L
M																									M
N																									N
O																									O
P	19					20					21					22					23			24	P
Q																									Q
R																									R
S																									S
T	30					29					28					27					26			25	T
U																									U
V																									V
W																									W
X	31					32					33					34					35			36	X
Y																									Y
Z																									Z

FULTON TWP
ROCK COUNTY WI

IF AVAILABLE
ROCK COUNTY COORDINATES PREFERRED

North _____ Elev. _____

East _____

Hor. Datum _____ Vert. Datum _____

LATITUDE _____ ELLIPS. HT. _____

LONGITUDE _____

NAD83(91) _____ NETWORK ADJ. YR _____

GPS (X) _____ TRAVERSE (X) _____

BASED ON THE FOLLOWING CONTROL:

◆ CORNER MONUMENT

○ WITNESS MONUMENT

BEARINGS ARE BASED ON: _____

FIELD BOOK _____ PAGE # _____

SHEET 1 OF 9

SHOW A PLAN VIEW DRAWING DEPICTING THE CORNER MONUMENT AND SURROUNDING PHYSICAL FEATURES, INCLUDING THE EXCAVATION AREA AND DEPTH.

PLANNING & ZONING COMMITTEE ADOPTED THIS FORM ON 12/2/1982

CORNER CODE E-23(4)

FU532^

(B) Describe any record evidence, monument evidence, occupational evidence, testimonial evidence or any other material evidence you considered, and whether the monument was found or placed.

- 1834 (MAR/APR) HARRISON EAST ON RANDOM BET SECS 1 & 12
2640 TEMPY 1/4 SEC. COR.
5280 INT. E BDY AT POST. LAND ROLLING 2ND RATE THE SAID BEING THE HIGHLANDS ADJACENT THE RIVER & COVERED BURR TIMBER
2640 SET POST FOR QUARTER SEC COR. BEARINGS {W.O. 18 S18W 54.12' W.O. 20 N48W 62.7' W.O. 18 W.O. 20} MARKED
5280 SEC COR.
- 1854 FULTON TOWN ROAD RECORDS BK 1 PG 30^{'''} BEGINNING ON THE EAST LINE OF THE TOWN OF FULTON ON THE CORNER OF SECTIONS NO. 1 AND 12 IN SAID TOWN AND RUNNING THENCE; WEST ALONG AND ON THE LINE BETWEEN SAID SECTIONS 1 & 12 ONE HUNDRED AND TWENTY TWO (122) RODS, INTERSECTING A PUBLIC ROAD. THE SAID COURSE AND DISTANCE ARE THE CENTERLINE OF SAID ROAD. AND NOW THEREFORE WE THE SUPERVISORS OF AFORESAID^{'''} DECLARE THE ABOVE DESCRIBED ROAD TO BE A PUBLIC HIGHWAY FOUR RODS WIDE^{'''}.
- 1880 LEE VOL 2 PG 300 FOUND STONE AT COR. IN ROAD & N.W. B.T. (SUBDIVIDED SECTION 1) 2680.92 FROM N 1/4 SEC 1 TO CENTER SEC 1, AND 1366.86' FROM N 1/4 COR SEC 1 TO W 1/16TH COR OF NE 1/4 OF SEC 1.
- 1899 BROWN VOL 2 PG 513 FD STONE @ COR. (SMALL SURVEY IN SE 1/4 OF SEC 1, 660' EAST OF CORNER).
- 1934 DOT #3901 STATES NOTHING ABOUT MON. SHOWS S 1/4 COR SEC 1 IS WEST OF P.I.
- 1949 ELY SUBDIVISION PLAT BK 15 PG 17 STATES NOTHING ABOUT THE MONUMENT. FROM N 1/4 COR SEC 12 S89-56E 528.56 TO A POINT THAT IS THE INTERSECTION OF THE SECTION LINE AND THE WEST LINE OF THE SUBDIVISION. THIS POINT IS 53.00' N1-37E OF A 2"X30" PIPE AND THE PIPE IS THE NW CORNER OF SUBDIVISION.
- 1950 JOHNSON MAP #13857 CALLS FOR CORNER BUT STATES NOTHING ABOUT IT. EAST 1261.61 TO A POINT OPPOSITE SW PROPERTY CORNER OF SURVEY. CALLS FOR THE SECTION LINE AT EAST 1261.61 FROM N 1/4 COR SEC 12 FOR A DISTANCE OF 435.60' TO THE EAST AS 33.00 SOUTH OF THE NORTH R/W LINE, 20' NORTH OF SOUTH R/W LINE, & FROM THE N 1/4 COR SEC 12 EAST 1261.61 THE NORTH R/W LINE AS THE SECTION LINE AND THE SOUTH R/W LINE 53 SOUTH OF THE SECTION LINE.
- 1952 BATTERMAN SUBDIVISION PLAT BK 16 PG 5 STATES NOTHING ABOUT MONUMENT. FROM N 1/4 COR SEC 12 S89-56E 528.56'(REC 528.56) TO A POINT THAT IS THE INTERSECTION OF THE SECTION LINE AND THE WEST LINE OF THE SUBDIVISION. THIS POINT IS 53.00 (REC 53.00) N1-36E OF A 1"X30" PIPE IN A DEEP DITCH AND THE PIPE IS THE NW CORNER OF THE SUBDIVISION.
- 1952 SUNNY MAP #1167 CALLS FOR NORTH LINE OF SEC 12 IN A SURVEY ABUTTING THE EAST R.O.W LINE OF STH 59. CALLS FOR THE EAST R.O.W LINE OF STH 59 AS S28-21E AND THE NORTH LINE OF SEC 12 AS EAST. CALLS FOR SECTION LINE AS THE NORTH LINE OF E/W 3 ROD ROAD (REC 4 ROD) & DOES NOT SHOW N 1/4 COR SEC 12. SURVEYED A 0.386 ACRES LOT ON SOUTH SIDE OF E/W ROAD.

SHEET 1 OF 9
CORNER CODE E-23(4)

Donald Barnes

1/04/07

FU532

- 1961 LEE CSM VOL 1 PG 141 STATES NOTHING ABOUT MON. CALLS FOR AN ANGLE OF 180-28-00 @ THE N 1/4 COR SEC 12 FROM THE NE TO NW CORNERS OF SEC 12, 2644.0 TO NE COR SEC 12, & 2657.38 TO NW COR SEC 12.
- 1961 BATTERMAN JR. SEP. 12 MAP #1191 SET 2" PIPE AT N 1/4 COR SEC 12 (CHANGED POSITION IN MAP #1165 DATED DEC 1961) BY SINGLE PROPORTIONATE MEASUREMENT. S89-27-20W 2647.69 TO NE COR SEC 12, S89-27-20W 2647.69' TO NW COR SEC 12, S0-45-30E ALONG N/S CENTERLINE OF SEC 12, S89-27-20W 139.58 TO SET 2" PIPE, FROM N 1/4 COR SEC 12 S0-45-30E 196.15 TO A SET 2" PIPE, FROM N 1/4 COR SEC 12 S0-45-30E 210.15 TO A SET 1" PIPE, CALLS FOR THE WEST RIGHT OF WAY LINE AS "RELOCATED W'LY R.O.W LINE", ANGLE OF 89-27-20 AT THE NE COR SEC 12 FROM THE EAST LINE OF SEC 12 TO THE N 1/4 COR SEC 12, ANGLE OF 89-01-40 AT THE NW COR SEC 12 FROM THE N 1/4 COR SEC 12 TO THE FOUND BOLT AT N.W COR RICHARDSON SPRING SUB'D, ANGLE OF 90-12-50 AT THE N 1/4 COR SEC 12 FROM THE N/S CENTERLINE OF SEC 12 TO THE NW COR SEC 12 N/S CENTERLINE BEING THE MEAN OF THE E & W SECTION LINES.
- 1961 SURVEYOR UNKNOWN NOV 14, MAP #8921 CALLS FOR NEW LOCATION N 1/4 COR SEC 12 4.2' SOUTH OF THOUSAND'S COR, FROM NEW LOCATION OF N 1/4 COR SEC 12 S0-15-30W 186.22' (REC 196.15 SEP 1961 IS A DIFF OF 9.93', REC 190.84' DEC 1961 IS A DIFF OF 4.2') TO THOUSAND COR. WHICH IS 0.71 S36-06-30E OF BATTERMAN'S COR., FROM NEW LOCATION S89-41-20W 136.13' TO POSITION WHICH IS S36-06-30W 4.90 OF THOUSAND'S COR. & IS S36-06-30W 12.25' OF BATTERMAN'S CORNER, FROM NEW LOCATION OF N 1/4 COR SEC 12 N86-20-40W 143.64' TO BATTERMAN'S CORNER, & THE DISTANCE BETWEEN THOUSAND'S CORNER ON THE WEST RIGHT OF WAY OF STH 59 THE BEARING & DISTANCE IS S36-06-30E 241.83' (REC 235.34' DEC 1961, REC 241.19' SEP 1961). IT APPEARS THAT AS A RESULT OF THIS SURVEY, BATTERMAN JR. CHANGED THE POSITION OF THE N 1/4 COR SEC 12 AS SHOWN ON MAP #1191 DATED SEP 12, 1961 TO THE POSITION AS SHOWN ON MAP #1165 DATED DECEMBER 4, 1961.
- 1961 SCHIMEALL NOV 29 MAP #13796 FOUND PIPE AT N 1/4 COR SEC 12, FOUND 2" PIN AT NW COR SEC 12, FOUND STONE AT NE COR SEC 12, FOUND 6"X8" STONE AT CENTER OF SEC 1.
- 1961 BATTERMAN JR. DEC. 4 MAP #1165 SAME PARCEL AS IN MAP #1191 DATED SEP 1961. SET 5/8" PIN AT N 1/4 COR SEC 12 ACCORDING TO OCCUPATION AS DEFINED BY A SURVEY BY P.F. BROWN IN VOL 2 PG 513, COUNTY SURVEYORS RECORDS, ALSO AGREES WITH THE OCCUPATION TO THE NORTH. 136.15' FROM THE N 1/4 COR SEC 12 TO A SET 2" PIPE S89-41-20W ALONG SECTION LINE, 190.84' FROM THE N 1/4 COR SEC 12 FROM THE EAST LINE OF SEC TO A SET 2" PIPE S0-45-30E ALONG THE N/S CENTERLINE SEC 12, S36-06-40E 235.34' BETWEEN THE SET 2" PIPES ALONG THE WEST R.O.W OF STH 59, 216.01 FROM THE N 1/4 COR SEC 12 TO A SET 1" PIPE S0-45-30E ALONG THE N/S CENTERLINE OF SEC 12, CALLS FOR S89-41-20W 2651.38 TO NW COR SEC 12, N89-13-20E 2644.0 TO NE COR SEC 12, S0-45-30E ALONG N/S CENTERLINE OF SEC 12, ANGLE OF 88-47-40 AT THE NW COR

SHEET 2 OF 9
CORNER CODE E-23(4)

Donald Barnes
1/04/07

FU532

SEC 12 FROM THE N 1/4 COR SEC 12 TO THE FOUND BOLT AT N.S. COR RICHARDSON SPRINGS SUBD., ANGLE OF 89-13-20 AT THE NE COR SEC 12 A CUT LIMESTONE MONUMENT 12 TO THE N 1/4 COR SEC 12, & ANGLE OF 90-26-50 AT THE N 1/4 COR SEC 12 FROM THE N/S CENTERLINE OF SEC 12 TO THE NW COR SEC 12.

1961 BATTERMAN JR. VOL 4 PG 113 SET 5/8" PIN AT N 1/4 COR ACCORDING TO OCCUPATION AS DEFINED BY A SURVEY BY P.F. BROWN IN VOL 2 PG 513 COUNTY SURVEYORS RECORDS, ALSO BY OCCUPATION TO THE NORTH. CALLS FOR N89-13-20E 2644.00 TO THE NE COR, S89-41-20W 2651.38 TO THE NW COR, S0-45-30E ALONG THE N/S 1/4 LINE OF SEC 12, S1-31-00E FROM NW COR SEC 12 TO NW CORNER OF RICHARDSON SPRING SUB, & SOUTH FROM NE COR SEC 12 ALONG SEC LINE. SET 2" PIPE 190.84 ON N/S 1/4 LINE OF SEC 12 AT INTERSECTION OF NEW R.O.W LINE AND N/S CENTER FRACTIONAL LOT 12 NORTH OF ROCK RIVER, SET 2" PIPE 136.15 AT INTERSECTION OF NEW R.O.W LINE AND N. LINE OF SEC 12, 235.34' BETWEEN PIPES ON R.O.W. STATES S.T.H 59 RELOCATED.

1962 ELY #13513 STATES NOTHING ABOUT MON.

1962 ELY MAP #13512 FOUND PIPE FROM N 1/4 COR SEC 12 NORTH 330.00 TO PIPE, FROM N 1/4 COR SEC 12 NORTH 990 TO PIPE, FROM N 1/4 COR SEC 12 NORTH 1316 TO PIPE.

1962 THOUSAND MAP #13555 FROM N 1/4 COR SEC 12 S0-15-30W 216.02 TO UNMONUMENTED POSITION, FROM N 1/4 COR SEC 12 S0-15-30W 311.52' TO UNMONUMENTED POSITION.

1965 THOUSAND MAP #13556 STATED NOTHING ABOUT THE MONUMENT. COMMENCING AT THE N 1/4 COR SEC 12 S89-41-20W 136.15 (REC 136.15 MAP #1165 DATED DEC 1961) TO THE P.O.B. THENCE S36-06-30E 81.37'(REC 81.37 MAP #1165 DATED DEC 1961).

1966 LEE CSM VOL 1 PG 141 FROM N 1/4 COR SEC 12 TO NW COR SEC 12 N89-13-20E 2644.0 & FROM N 1/4 COR SEC 12 TO NE COR SEC 12 S89-41-20W 2651.38, FROM N 1/4 COR SEC 12 S89-41-20W 136.15 TO PIPE IN CENTER OF STH 59, FROM N 1/4 COR SEC 12 S0-45-30E ALONG MEAN LINE BETWEEN E & W SECTION LINES, FROM INTERSECTION OF SECTION LINE WITH CENTER OF PAVEMENT S36-06-40E 81.37 TO PIPE CONTINUING S36-06-40E 153.97 TO PIPE, FROM N 1/4 COR SEC 12 S0-45-30E 190.84' ALONG N/S CENTER OF SEC 12 TO PIPE IN CENTER OF PAVEMENT, FROM N 1/4 COR SEC 12 S0-45-30E 216.01' TO PIPE WHICH IS N89-41-20E 3.90' OF ANOTHER PIPE.

1970 THOUSAND MAP #985 COMMENCES AT N 1/4 COR SEC 12 BUT STATES NOTHING ABOUT MONUMENT. S89-54-59E 661.35 (REC 660) TO PLACED IRON STAKE WHICH IS ON THE EAST R/W LINE OF MAPLE ROAD. 661.35 TO PLACED IRON STAKE WHICH IS THE INTERSECTION OF THE WEST RIGHT OF WAY LINE OF MAPLE ROAD & THE SECTION LINE.

1970 THOUSAND CSM VOL 2 PG 49 STATED NOTHING ABOUT MONUMENT. BEARINGS REFERENCED TO NORTH LINE ROCK RIVER HEIGHTS PLAT. FROM N 1/4 COR SEC 12 S89-54-59E

SHEET 3 OF 9

CORNER CODE E-23(4)

Donald Barnes
1/04/07

FU532

- 1976 LIGHT MAP #1187 FD 5/8" ROD AT N 1/4 COR SEC 12, FROM N 1/4 COR SEC 12 S89-41-20W ALONG SECTION LINE 388.85' TO A STAKE PLACED, FROM N 1/4 COR SEC 12 S89-41-20W 928.33' TO A STAKE PLACED, & BEARINGS ARE REFERENCED TO THE N 1/4 COR SEC 12 AND S 1/4 COR SEC 12. SO-19-07E ASSUMED BEARING.
- 1976 LIGHT MAP #1190 FD IRON STAKE AT N 1/4 COR SEC 12, SO-19-07E 216.00' (REC 216.01) TO R/R SPIKE WHICH IS THE SE PROPERTY CORNER OF PARCEL IN MAP #1165 DATED 1961. DETAIL OF PROPERTY CORNER CALLS FOR 1" IRON PIPE 2.25 TO THE WEST & 1" IRON PIPE TO THE EAST, CALLS FOR S89-41-20W 238.60 (REC 1961 240.25 DIFFERENCE OF 1.65') FROM THE SPIKE TO FD 1" PIPE
- 1977 SCHOREDER CSM VOL 6 PG 210 SHOWS THE N 1/4 AND NE CORNERS OF SEC 12 AT THE END OF THE SECTION LINE. FROM N 1/4 COR SEC 12 WEST 388.85 (REC 388.85) TO FD PIN, FROM N 1/4 COR SEC 12 WEST 928.33 (REC 928.33) TO FD PIN
- 1980 NORTHROP MAP #1193 AT N 1/4 COR SEC 12 CALLS FOR 1" O.D. IRON PIPE, FITS TIES OF RECORD, FROM N 1/4 COR SEC 12 S89-56-00E 440.88 (REC 439.56 DIFFERENCE OF 1.32') TO PROPERTY LINE (NO MONUMENT), FROM N 1/4 COR SEC 12 S89-56-00E 595.12 (REC 528.56) TO PROPERTY LINE (NO MONUMENT), FROM N 1/4 COR SEC 12 S89-56-00E 2645.11 TO A BERNTSEN ALUMINUM MONUMENT OF RECORD AT THE NE COR SEC 12 AT S89-56-00E 595.12 PROPERTY CORNER IS S01-39-30W 54.34(REC 53.00 DIFFERENCE OF 1.34') AT N 1/4 COR S89-56-00E 694.27 TO FD 5/8" REBAR.
- 1981 SCHOREDER CSM VOL 10 PG 446 STATES NOTHING ABOUT MONUMENT. SOUTH 486.88 TO SET PIN, FROM N 1/4 COR SEC 12 SOUTH 708.12 TO SET PIN, FROM N 1/4 COR SEC 12 SOUTH 768.12 TO SET PIN, FROM N 1/4 COR SEC 12 SOUTH 879.12 TO SET PIN WHICH IS THE M.C.
- 1981 SCHOREDER CSM VOL 15 PG 173 STATES NOTHING ABOUT MONUMENT. FROM N 1/4 COR SEC 12 N89-19-10E 393.00 TO MONUMENT & FROM N 1/4 COR SEC 12 N89-19-10E 626.35 TO THE WEST R/W LINE OF HILLSIDE RD.
- 1982 LEE CSM VOL 11 PG 129 FD PIPE. AT N 1/4 COR SEC 12 ANGLE OF 68-59-11 FROM NE COR SEC 12 TO MEANDER CORNER AT A DISTANCE OF 1420.46'
- 1982 THOM SR. MAP #6174 FOUND PIPE AT N 1/4 COR SEC 12. AT N 1/4 COR SEC 12 NO-13-00E 329.93 TO RESET 1" PIPE, AT N 1/4 COR SEC 12 N23-24-30W 358.52 TO FD 1" PIPE, & AT N 1/4 COR SEC 12 NO-13-00E 1319.69 TO FD 3/4" PIN.
- 1983 BARNES E-23 FOUND 1" IRON PIPE IN CMP. REPLACED WITH ALUMINUM SPIKE MONUMENT. IN HARMONY WITH RECORD DISTANCE TO THE WEST AND VERBAL DESCRIPTION OF RICHARD THOM SR. FOUND 2" IRON PIPE OF RECORD TO THE WEST. DISTANCE TO FOUND 2" PIPE WEST OF CORNER IS 134.14 (REC 134.15). CALLS FOR N/S 305,103.44;E/W 2,261,999.97.
- 1984 WEIR E-23(1) I FOUND THE ALUMINUM MONUMENT AND THE CUT DRILL HOLE TIES AS ESTABLISHED AND SHOWN ON PAGE 48, FULTON BOOK 2 PG 48 THE ROCK SURVEYOR'S OFFICE, DATED DEC 4, 1983 BY R. THOM SR. (THOM STATES THAT A 1" IRON PIPE WAS FOUND AT CORNER WHICH WAS SET IN A

SHEET 4 OF 9

CORNER CODE E-23(4)

Donald Barnes
11/04/07

FU532

- C.M.P., AND REPLACED WITH AN ALUMINUM SPIKE MONUMENT.) I RETIED THE CORNER AS SHOWN BELOW.
- 1984 BRANDT #13937 & #13733 FD ALUM
- 1984 WEIR MAP #6396 FOUND ALUM. FROM THE N 1/4 COR SEC 12 EAST 694.27 TO A FD REBAR AT THE INTERSECTION OF THE EAST R/W LINE OF MAPLE RD AND THE SECTION LINE. FOUND ALUMINUM MONUMENT AT THE NE COR OF SEC 12 & FROM N 1/4 COR SEC 12 N88-30-53E ALONG SECTION LINE 1326.35 TO FD REBAR WHICH IS 33.00 SOUTH OF SET PIPE. THE SET PIPE IS 1.77' NORTH OF FD 1 1/4 PIPE. THE BEARING & DISTANCE BETWEEN THE N 1/4 AND NE CORNERS OF SECTION 12 IS N88-30-53E 2644.97
- 1984 BARNES VOL 6 PG 326 STATE PLANE COORDINATES N/S 305,103.44;E/W 2,261,999.97 FOR N 1/4 COR SEC 12, N/S 305,171.73;E/W 2,264,644.10 FOR NE COR SEC 12, N/S 307,837.86; E/W 2,264,605.92 FOR E 1/4 COR SEC 1, 310,432.18;E/W 2,261,936.21 FOR N 1/4 COR SEC 1, N/S 309,063.2;E/W 2,261,954.9 FOR W 1/16TH COR OF NE 1/4 OF SEC 1 & 307,675.59;E/W 2259331.98 FOR W 1/4 COR SEC 1, FROM N 1/4 COR SEC 12 N88-31-14E 2645.01 TO NE COR SEC 12.
- 1985 BARNES VOL 6 PG 341 NO-11-12E 2641.64 FROM N 1/4 COR SEC 12 TO LEE'S MONUMENT AT CENTER OF SEC 1. CENTER OF SEC 1 MONUMENT IS 9.8' EAST OF N/S QUARTER LINE & 10.4 SOUTH OF E/W QUARTER LINE. DISTANCE FROM N 1/4 COR SEC 1 TO W 1/16TH COR OF NE 1/4 OF SEC 1 IS 1368.15 (REC 1366.86), DISTANCE FROM N 1/4 COR SEC 1 TO CENTER OF SEC 1 IS 2685.93 (REC 2680.92), & DISTANCE FROM CENTER OF SEC 1 TO E 1/4 COR SEC 1 IS 2629.95 (REC 2628.12).
- 1987 LEE MAP #12799 FOUND ALUM. FROM N 1/4 COR SEC 12 EAST 440.80 (DEED 439.56) TO A PIPE WHICH IS 49.50' NORTH OF A PROPERTY PIPE. CALLS FOR THE NE CORNER OF SEC 12 AT THE END OF THE SECTION LINE.
- 1988 SCHOREDER CSM VOL 13 PG 180 FOUND ALUM. FROM N 1/4 COR SEC 12 N89-19-10E 393.00 SET PIN, FROM N 1/4 COR SEC 12 N89-19-10E 661.35 (REC 661.35) TO THE INTERSECTION OF THE SECTION LINE & THE CENTER OF HILLSIDE RD. CALLS FOR NE COR SEC 12 AT THE END OF THE SECTION LINE, FROM THE N 1/4 COR SEC 12 N23-24-30W 358.52 ALONG THE FRONTAGE ROAD TO A PLACED PIN.
- 1989 WIDOT R.O.W PLAT MAP #15031, 11167, & 15032 SHOWS ALUM. ON. AT N 1/4 COR SEC 12 N/S 305,102.61; E/W 2,261,997.33, ALUM MON AT NW COR SEC 12 N/S 305,056.16; E/W 2,259,346.09, ALUM. MON AT NE COR SEC 12 N/S 305,169.80;E/W 2,264,641.41, CUT LIMESTONE AT E 1/4 COR SEC 12 N/S 302,529.19;E/W 2,264,748.01, S88-59-47W 2651.65 TO NW COR SEC 12, N88-32-40E 2644.93 TO NE COR SEC 12, & S2-18-42E 2642.76 FROM NE TO E 1/4 CORNERS OF SEC 12. START OF RELOCATION OF ORDER BEGINS ABOUT 800' SOUTH OF N 1/4 COR SEC 12 AND PROCEEDS TO THE SOUTH. CENTER OF STH 59 PAVEMENT IS 41.39 FROM THE N 1/4 COR SEC 12 ALONG THE SECTION LINE AND BEARING OF CENTER OF STH 59 PAVEMENT FROM SECTION LINE IS N33-07-15W. ANGLE AT N 1/4 COR SEC 12 FROM NE COR SEC 12 TO

SHEET 5 OF 9
CORNER CODE E-23(4)

Donald Barnes
1/4/07

FU532

- NW COR SEC 12 180-27-07 (MAP #1165 DEC 1961 180-28-00), ANGLE AT NE COR SEC 12 FROM E 1/4 COR SEC 12 TO N 1/4 COR SEC 12 90-51-22 (MAP #1165 DEC 1961 89-13-20), & ANGLE FROM INTERSECTION OF PAVEMENT & SECTION LINE FROM N 1/4 COR SEC 12 TO CENTER OF PAVEMENT 58-20-05 (REC MAP #1165 DEC 1961 54-12-00)
- 1991 SCHROEDER CSM VOL 15 PG 173 STATES NOTHING ABOUT MON. IN MALLWOOD DR. EAST 393.00 TO PK WHICH IS 20.00 SOUTH OF LOT BEING A PIPE.
- 1992 HAVERSON MAP #11601 STATES NOTHING ABOUT MONUMENT. AT N 1/4 COR SEC 12 S89-43W 41.23 TO REFERENCE LINE "B" STH 59 AS RELOCATED, THENCE N32-27W ALONG CENTER STH 59 PVMT 647.68. SURVEY IS IN SEC 1.
- 1993 JOHNS MAP 10266 FOUND ALUM. FROM N 1/4 COR SEC 12 TO NE COR SEC 12 N89-33-53E 2644.99, FROM NE COR SEC 12 TO E 1/4 COR SEC 1 NO-12-24E 2666.41
- 1993 JOHNS MAP #10197 FROM N 1/4 COR SEC 12 TO NE COR SEC 12 N89-34-31E 2645.20 & FROM NE COR SEC 12 S0-17-02W 595.30' TO FOUND 2" SQUARE BRASS MONUMENT POST AT M.C.
- 1993 JOHNS #10198 USED BUT STATES NOTHING ABOUT MON. 2645.20 TO NE COR SEC 12 & ANGLE 89-17-29 @ NE COR SEC 12 FROM EAST LINE SEC 12 TO N 1/4 COR SEC 12
- 1993 COMBS CSM VOL 16 PG 434 STATES NOTHING ABOUT MONUMENT. AT N 1/4 COR SEC 12 NO-13E 329.93 (REC 329.93) TO FD PIPE. FD PIPE IS 107.82 EAST OF ANOTHER FD PIPE, AT N 1/4 COR SEC 12 NO-13E 976.76 TO PIPE, AT N 1/4 COR SEC 12 NO-13E 1319.2 TO PIPE.
- 1993 HALVERSON CSM VOL 17 PG 51 FOUND ALUM. AT N 1/4 & NE CORNERS OF SEC 12. N89-13-13E 2645.03 FROM N 1/4 COR SEC 12 TO NE COR SEC 12, FROM N 1/4 COR SEC 12 TO INTERSECTION OF CENTER OF STH 59 PAVEMENT & SECTION LINE S89-43-00W 41.23, FROM INTERSECTION CENTER OF STH 59 PAVEMENT & SECTION LINE N32-27-00W 647.68 ALONG CENTER OF PAVEMENT TO SURVEY POINT.
- 1995 NORTHROP MAP #9281 FOUND ALUM MON. AT N 1/4 COR SEC 12, NO-07-15E 4140.44' TO ALUM MON AT N 1/4 COR SEC 1, FROM N 1/4 COR SEC 12 NO-07-15W 1331.06 TO LINE ALONG OLD FENCE AND BRUSH LINE, & TRUE NORTH REFERENCED TO I-90 REF. LINE BEARING.
- 1995 NORTHROP MAP #9280 FOUND ALUM MON. FROM N 1/4 COR SEC 12 NO-07-15E 2735.75 TO LINE ALONG FENCE & BRUSH LINE. TRUE NORTH REFERENCED TO I-90 REF. LINE BEARING.
- 1996 GASTEL #8964 FD SURVEY MON.
- 1997 BARNES E-7(2) ACCEPTED ALUM. SPIKE IN CMP. MR. RON COMBS STATED THE MONUMENT WAS NOT IN HARMONY WITH DEEDS AND MONUMENTS JUST SOUTH OF THE CORNER. HIS EVIDENCE INDICATES THE MONUMENT SHOULD BE ABOUT 4 TO 7' FARTHER NORTH. BASED ON THE FOLLOWING I ACCEPTED THE FOUND ALUM. SPIKE:
- 1) DOT'S ANGLE AT THE N 1/4 COR SEC 12 FROM THE NE TO NW CORNERS OF SEC 12 DIFFERS BY ONLY 0-00-53 FROM BATTERMAN JR.'S 1961 ANGLE.

SHEET 6 OF 9
CORNER CODE E-23(4)

Donald Barnes
1/04/07

FU532

- 2) THE DISTANCE AS SHOWN IN E-23 TO THE FOUND 2" PIPE THAT BATTERMAN PLACED IN 1961 DIFFERS BY ONLY 0.01'.
- 3) THE DOT DISTANCES TO THE NW & NE CORNERS OF SEC 12 ARE WITH IN 1.00' OF BATTERMAN'S REPORTED 1961 DISTANCES.

IT APPEARS THE CHANGED POSITION OF THE CORNER IN BATTERMAN'S SEP & DEC 1961 SURVEY AND SHIMEALL'S AND THE OTHER UNKNOWN SURVEYORS SURVEY DURING THOSE FEW MONTHS, THERE MAY HAVE BEEN PROBLEMS WITH THE POSITION OF THE CORNER WHICH BATTERMAN ATTEMPTED TO ADDRESS. IN THE UNKNOWN SURVEYOR MAP #8921 IT SHOWS A THOUSAND CORNER AT THE N 1/4 COR SEC 12. JOHNSON'S 1950 SURVEY CALLS FOR THE N 1/4 COR SEC 12 ON THE NORTH R/W LINE OF A 53' WIDE E/W ROAD & SUNNY'S 1952 CALLS FOR THE N 1/4 COR SEC 12 ON THE NORTH LINE OF E/W 3 ROD ROAD. THESE SURVEYS ARE IN CONFLICT WITH TOWNSHIP ROAD RECORDS AND MOST OF THE OTHER SURVEYS.

- 2000 HALVERSON #7831 HARRISON/BERNTSEN MON. 2645.03 TO SE COR SEC 1.
- 2000 LEUENBERGER #7696 FD ALUM. MON.
- 2001 BARNES E-23(3) MONUMENT DESTROYED BY STH 59 RESURFACING PROJECT. CMP WAS REPLACED. CORNER RESTORED THROUGH ACCEPTANCE OF OBLITERATED EVIDENCE LOCATION. I ACCEPTED BATTERMAN'S 2ND POSITION WHICH WAS MONUMENTED BY A 1" PIPE IN 1983.
- 2004 COMBS CSM VOL 27 PG 313 FD NAIL
- 2004 LEUENBERGER CSM VOL 27 PG 313 FD NAIL. USED TO ESTABLISH SECTION LINE FROM NW COR SEC 12
- 2005 COMBS CSM VOL 29 PG 77 FD DOT MON 2642.91 TO ALUM @ CENTER OF SEC 1 & ANGLE 88-55-21 @ CENTER OF SEC 1 FROM FD PIN ON N/S 1/4 LINE ALONG E/W 1/4 LINE TO CENTER OF GOEDE RD. 1141.84' FROM CENTER OF SEC 1 TO CENTER OF GOEDE RD.
- 2005 WILLIAMSON CSM VOL 28 PG 257 FD SURVEY SPIKE 2644.96 TO FD ALUM @ SE COR SEC 1

FD SURVEY SPIKE AND REFERENCE PIPES

C) Was the corner restored through acceptance of (1) an obliterated evidence location, or, (2) a found perpetuated location?

ACCEPTED FOUND SPIKE.

SHEET 7 OF 9

CORNER CODE **E-23(4)**

Ronald Barnes
1/04/07

D) Describe any material discrepancy between the location of the corner as restored or reestablished and the location of that corner as previously restored or reestablished by distance and direction. Show the discrepancy on the plan view drawing under (a), above. Show the distances between the corner as previously restored or reestablished and (1) the corner as restored or reestablished, and (2) to at least 4 of the witness monuments shown on the drawing in (a), above.

IN SEP. 1961 BATTERMAN JR. SET A 2" PIPE AT THE N ¼ COR SEC 12 BY SINGLE PROPORTIONATE MEASUREMENT. IN DEC. 1961 HE SET A 5/8" PIN AT THE N ¼ COR OF SEC 12 ACCORDING TO OCCUPATION AS DEFINED BY A SURVEY BY PF BROWN IN VOL 2 PG 513 WHICH ALSO AGREES WITH THE OCCUPATION TO THE NORTH. SET TIES. BY USING HIS BEARING ALONG THE NORTH LINE OF THE NE ¼ & THE BEARING ALONG THE EAST LINE OF THE N ¼ OF SEC 12 TO COMPUTE THE POSITION OF BOTH CORNERS THE DISTANCE BETWEEN THE TWO POSITIONS IS 11.39'. THE OLD POSITION IS ABOUT 11' NORTH AND 4' WEST. 1961 SURVEY MAP #8921 STATES THOUSAND'S COR IS 0.71 S36-06-30E OF BATTERMAN'S COR. SO THERE ARE AT LEAST THREE DIFFERENT POSITIONS FOR THE N ¼ COR OF SEC 12.

E) Was the corner reestablished through lost corner proportionate methods? If so, show the method, including the directions and distances to other public land survey corners used as evidence or used for proportioning the corner location.

NO

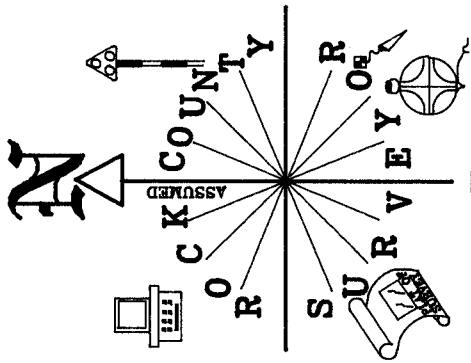
I, **Donald Barnes**, hereby certify that the corner location as identified by the corner code index was determined by me under my direction and control and that this U.S. Public Land Survey Monument Record is correct and complete to the best of my knowledge and belief.

Seal

SHEET 8 OF 9

Emboss
Donald Barnes
 1/04/07

CORNER CODE **E-23(4)**
 A.E. 7.08 REQUIREMENT

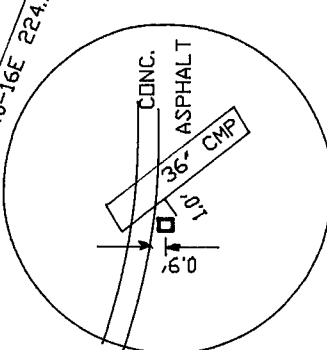
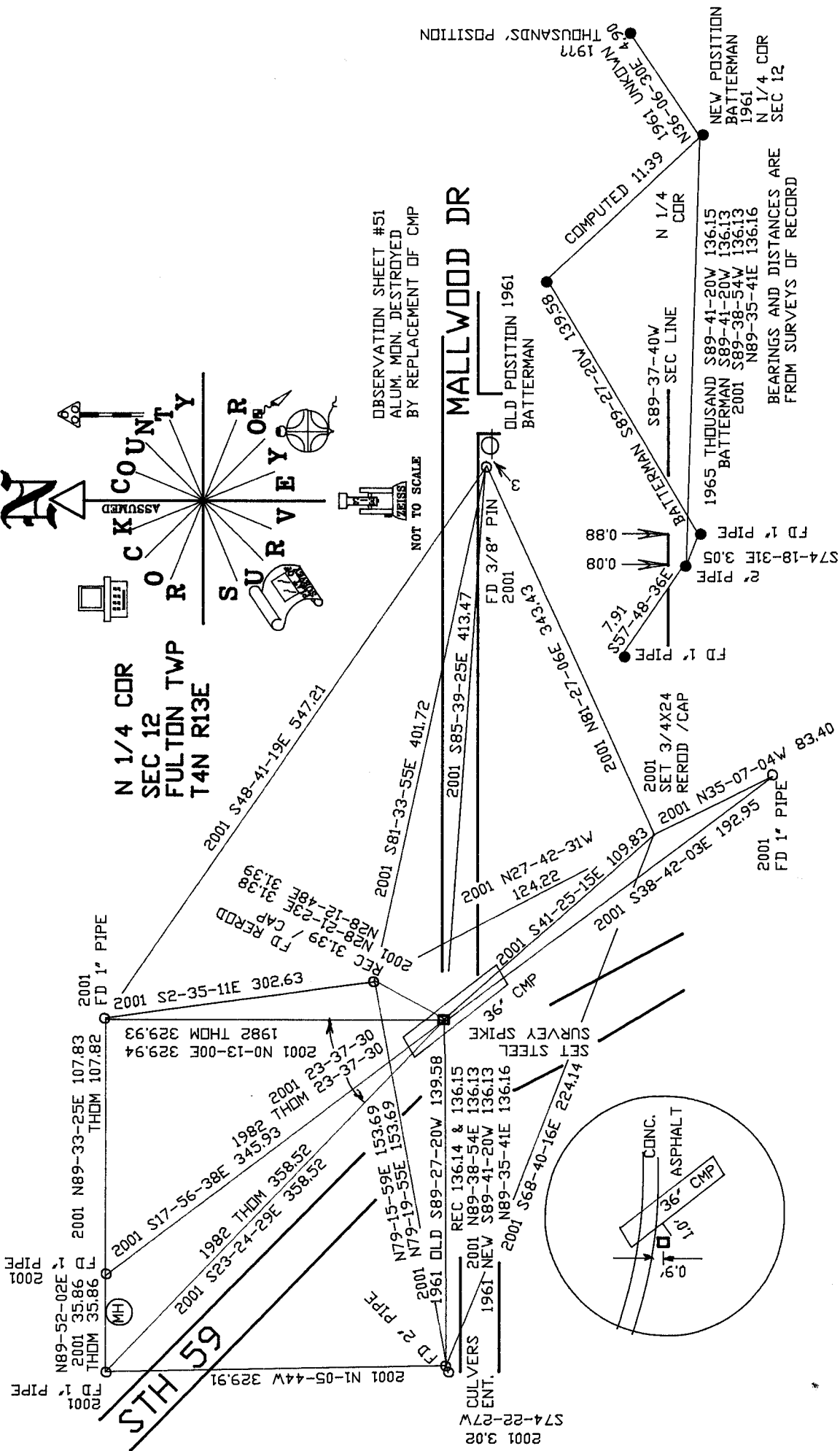


N 1/4 CDR
SEC 12
FULTON TWP
T4N R13E

OBSERVATION SHEET #51
ALUM. MON. DESTROYED
BY REPLACEMENT OF CMP

NOT TO SCALE

MALLWOOD DR



NEW POSITION
BATTERMAN
1961
N 1/4 CDR
SEC 12

1965 THOUSAND
BATTERMAN
2001
S89-41-20W 136.15
S89-41-20W 136.13
S89-38-54W 136.13
N89-35-41E 136.16

BEARINGS AND DISTANCES ARE
FROM SURVEYS OF RECORD

STH 59

Donald Baures
1/04/07

FD BENT
1\"/>

SHEET 9 OF 9

E-23(4)