

Paper weight-110# (minimum)

Black nonfading ink required

# U.S. PUBLIC LAND SURVEY MONUMENT RECORD

For Public Land Survey Corners In:

WI ADMINISTRATIVE CODE A-E 7.08 REQUIREMENT

T. 1 N. R. 13 E. 4th P.M.

REV 10/23/2004

USMONREC.DWG

CORNER CODE INDEX

|   |   |   |   |   |   |   |   |   |   |    |    |    |    |    |    |    |    |    |    |    |    |    |    |    |    |   |
|---|---|---|---|---|---|---|---|---|---|----|----|----|----|----|----|----|----|----|----|----|----|----|----|----|----|---|
| A | 1 | 2 | 3 | 4 | 5 | 6 | 7 | 8 | 9 | 10 | 11 | 12 | 13 | 14 | 15 | 16 | 17 | 18 | 19 | 20 | 21 | 22 | 23 | 24 | 25 | A |
| B |   | 6 |   |   |   | 5 |   |   |   | 4  |    |    |    |    | 3  |    |    |    |    | 2  |    |    |    |    | 1  | B |
| C |   |   |   |   |   |   |   |   |   |    |    |    |    |    |    |    |    |    |    |    |    |    |    |    |    | C |
| D |   |   |   |   |   |   |   |   |   |    |    |    |    |    |    |    |    |    |    |    |    |    |    |    |    | D |
| E |   |   |   |   |   |   |   |   |   |    |    |    |    |    |    |    |    |    |    |    |    |    |    |    |    | E |
| F |   |   |   |   |   |   |   |   |   |    |    |    |    |    |    |    |    |    |    |    |    |    |    |    |    | F |
| G |   |   |   |   |   |   |   |   |   |    |    |    |    |    |    |    |    |    |    |    |    |    |    |    |    | G |
| H |   |   |   |   |   |   |   |   |   |    |    |    |    |    |    |    |    |    |    |    |    |    |    |    |    | H |
| J |   |   |   |   |   |   |   |   |   |    |    |    |    |    |    |    |    |    |    |    |    |    |    |    |    | J |
| K |   |   |   |   |   |   |   |   |   |    |    |    |    |    |    |    |    |    |    |    |    |    |    |    |    | K |
| L |   |   |   |   |   |   |   |   |   |    |    |    |    |    |    |    |    |    |    |    |    |    |    |    |    | L |
| M |   |   |   |   |   |   |   |   |   |    |    |    |    |    |    |    |    |    |    |    |    |    |    |    |    | M |
| N |   |   |   |   |   |   |   |   |   |    |    |    |    |    |    |    |    |    |    |    |    |    |    |    |    | N |
| O |   |   |   |   |   |   |   |   |   |    |    |    |    |    |    |    |    |    |    |    |    |    |    |    |    | O |
| P |   |   |   |   |   |   |   |   |   |    |    |    |    |    |    |    |    |    |    |    |    |    |    |    |    | P |
| Q |   |   |   |   |   |   |   |   |   |    |    |    |    |    |    |    |    |    |    |    |    |    |    |    |    | Q |
| R |   |   |   |   |   |   |   |   |   |    |    |    |    |    |    |    |    |    |    |    |    |    |    |    |    | R |
| S |   |   |   |   |   |   |   |   |   |    |    |    |    |    |    |    |    |    |    |    |    |    |    |    |    | S |
| T |   |   |   |   |   |   |   |   |   |    |    |    |    |    |    |    |    |    |    |    |    |    |    |    |    | T |
| U |   |   |   |   |   |   |   |   |   |    |    |    |    |    |    |    |    |    |    |    |    |    |    |    |    | U |
| V |   |   |   |   |   |   |   |   |   |    |    |    |    |    |    |    |    |    |    |    |    |    |    |    |    | V |
| W |   |   |   |   |   |   |   |   |   |    |    |    |    |    |    |    |    |    |    |    |    |    |    |    |    | W |
| X |   |   |   |   |   |   |   |   |   |    |    |    |    |    |    |    |    |    |    |    |    |    |    |    |    | X |
| Y |   |   |   |   |   |   |   |   |   |    |    |    |    |    |    |    |    |    |    |    |    |    |    |    |    | Y |
| Z |   |   |   |   |   |   |   |   |   |    |    |    |    |    |    |    |    |    |    |    |    |    |    |    |    | Z |

TURTLE TWP

ROCK COUNTY WI

IF AVAILABLE  
ROCK COUNTY COORDINATES PREFERRED

North \_\_\_\_\_ Elev. \_\_\_\_\_

East \_\_\_\_\_

Hor. Datum \_\_\_\_\_ Vert. Datum \_\_\_\_\_

LATITUDE \_\_\_\_\_ ELLIPS. HT. \_\_\_\_\_

LONGITUDE \_\_\_\_\_

NAD83(91) \_\_\_\_\_ NETWORK ADJ. YR \_\_\_\_\_

GPS (X) \_\_\_\_\_ TRAVERSE (X) \_\_\_\_\_

BASED ON THE FOLLOWING CONTROL:

PLACE MONUMENT SYMBOL  AT PROPER LOCATION ON ABOVE INDEX

CORNER MONUMENT

WITNESS MONUMENT

(a)

ROCK COUNTY PROJECTION  
BEARINGS ARE BASED ON:

FIELD BOOK \_\_\_\_\_ PAGE # \_\_\_\_\_

OR OBSERVATION SHEET \_\_\_\_\_

SHEET 1 OF 6

SHOW A PLAN VIEW DRAWING DEPICTING THE CORNER MONUMENT AND SURROUNDING PHYSICAL FEATURES, INCLUDING THE EXCAVATION AREA AND DEPTH.

PLANNING & ZONING COMMITTEE ADOPTED THIS FORM ON 12/2/1982

CORNER CODE V-7(1)

TU604 S1/4CORSEC29

(B) Describe any record evidence, monument evidence, occupational evidence, testimonial evidence or any other material evidence you considered, and whether the monument was found or placed.

1836 ORSON LYON (APRIL) EAST RANDOM BETWEEN SECTIONS  
29 & 32

132 BROOK 13.2' WIDE CRS NW  
2178.00 BROOK 9.9' WIDE CRS SW  
4257.00 INDIAN TRAIL NE & SW  
5292.54 INTERSECTED N & S LINE 7.92' SOUTH OF POST.  
LAND DRY ROLLING PRAIRIE & FIRST RATE  
GROWTH. GRASS  
WEST CORRECTED BETWEEN SECTIONS 29 & 32  
2646.27 SET QUARTER SECTION POST & MADE MOUND OF  
EARTH & SOD  
5292.54 SECTION CORNER

1858 TWP ROAD RECORDS BK1 PG 32 "'''''''' THAT A COUNTY ROAD BE ALTERED ACROSS SAID TOWN OF THE WIDTH OF 66', THE SURVEY OF WHICH IS AS FOLLOWS: THE CENTER LINE OF THE SAID HIGHWAY IS TO COMMENCE AT THE QUARTER SECTION LINE IN THE NORTH HALF OF SECTION 31, 3168' TO THE CENTER OF THE NORTHEAST QUARTER OF SAID SECTION; THENCE N88E 3484.8' TO A POINT IN SEC 32, 1914' WEST OF THE QUARTER SECTION LINE AND 120.12' NORTH OF THE 1/16 SECTION LINE; THENCE N69E 3340.26' TO CORNERS OF SECTION 28,29,32, AND 33; THENCE EAST ON SECTION LINE 1944.36'; THENCE N54E 8910' TO CENTER OF SOUTH LINE OF THE SOUTHEAST QUARTER OF SEC 22 PASSING LINE OF SECTIONS 27 AND 28 AT 4086.72', 201.96' SOUTH OF THE QUARTER SECTION POST; THENCE EAST ON SECTION LINE 11,880' TO RANGE LINE. THIS ALTERATION WILL RUN THE ROAD THROUGH THE ENCLOSED LANDS OF O.P. BICKNELL IN THE NORTHWEST QUARTER OF SECTION 31, FISHER AND CHENCY IN SECTION 28 AND OLD MR. POST IN SECTION 33, R. DOLE, G.S. MURRAY AND MR. NOBLE ON SECTION 27; THENCE ON SECTION LINE ACROSS LANDS OWNED BY S. WRIGHT, NOBLE HILL, GILLMAN, S.A. MURRAY, B. PARKS, H. RAYMOUND, G. LEVINCH; G.M. MURRAY, H.H. SMITH AND WIDOW HASBROOK ON SECTION 25.

1859 HOBART VOL 1 PG 108 & #4940 NO STATEMENT ABOUT THE MONUMENT. USED TO SUBDIVIDE SECTION 29. N89-25W 2659.8 TO SW, S89-21E 2657.16 FROM W 1/4 TO CENTER OF SEC 29, S0-40W 2641.32 FROM W 1/4 TO SW CORNERS OF SECTION 29. S 1/16 TO N 1/16 OF SW 1/4 NO-42'W 2640.0. VAR 5-30. ANGLE 91-15 @ SW COR SEC 29 FROM W 1/4 COR SEC 29 TO S 1/4 COR SEC 29.

1875 TURTLE ROAD RECORDS BK1 PG 49,50, & 51 COMMENCING AT A POINT IN THE NORTH LINE OF SECTION 32, IN SAID TOWN, THE SAID POINT BEING ALSO IN THE CENTER OF SAID HIGHWAY 247.5' EAST OF THE ANGLE OR CORNER IN SAID HIGHWAY WHERE THE SAME TURNS AND RUNS SOUTHWARDLY FROM THE SAID NORTH LINE OF SAID SECTION; THENCE WEST ALONG THE SAID SECTION LINE 247.5' TO THE SAID CORNER OR ANGLE IN SAID HIGHWAY AND THENCE SOUTHWARDLY ALONG THE SAID HIGHWAY 214.5'. AND IT IS ORDERED AND DETERMINED AND WE DO HEREBY ORDER AND DETERMINE THAT ALL THAT PART OF SAID HIGHWAY THE CENTER LINE OF WHICH IS ABOVE DESCRIBED BE AND THE SAME IS HEREBY IS SO ALTERED THAT THE CENTER LINE OF THAT PORTION OF SAID HIGHWAYS IS DESCRIBED AS FOLLOWS: COMMENCING AT A POINT IN THE NORTH LINE OF SECTION 32 IN THE TOWN OF TURTLE SAID POINT BEING IN THE CENTER OF THE HIGHWAY BETWEEN

SHEET 1 OF 6

CORNER CODE V-7(1)

Real  
Surveyor  
Harold Fane,  
10/23/2012

TU604 S 1/4 COR SEC 29 TURTLE-TWP

- LANDS OF S.G. COLLEY AND L.M. COLT 247.5' EAST OF THE CORNER OR ANGLE IN SAID HIGHWAY WHERE THE SAME HAS HERETOFORE TURNED AND RAN SOUTHWARDLY FROM THE NORTH LINE OF SAID SECTION 32 AND RUNNING THEN SOUTHWESTERLY IN A DIRECT LINE ACROSS LAND OF SAID S.G. COLLEY SO AS TO INTEREST THE CENTER OF SAID HIGHWAY WHERE THE SAME RUNS SOUTHWARDLY FROM SAID SECTION LINE, 214.5' SOUTHWARDLY FROM SAID SECTION LINE MEANING ALONG THE CENTER AS THE SAME FORMERLY RAN.
- 1911 KERCH VOL 3 PG 64 SET 2" GAS PIPE @ CENTER OF SEC 29. DID NOT CALL FOR S 1/4 COR SEC 29. PROBABLY USED TO SUBDIVIDE THE SECTION. 2662' FROM W 1/4 COR TO CENTER OF SEC 29, 2656' FROM E 1/4 COR TO CENTER OF SEC 29. STATES SEE RECORDED PLAT OF MORGAN FARM
- 1911 KERCH MORGAN FARM BK 7 PG 47 DOES NOT CALL FOR THE S 1/4 COR SEC 29. SUBDIVIDED SEC 29 & SET 2" GAS PIPE @ CENTER OF SEC 29, N 1/16TH COR OF SW 1/4 SEC 29, & N 1/16TH COR OF SE 1/4 SEC 29. TO SUBDIVIDED THE SECTION AND SET THE CENTER OF SEC 29. HE PROBABLY USED THE S 1/4 COR SEC 29.
- 1930 BATTERMAN COUNTY SURVEY REC VOL 3 PG 188 MORGAN FARM FD MONUMENT AT CENTER OF SEC 29, FD OLD GP 330 WEST OF CENTER, FD GP @ W 1/4 COR SEC 29, FD GP 189' EAST OF W 1/4 COR SEC 29, WHICH IS 0.75' SOUTH OF E/W 1/4 LINE, DROVE GP 362.7 EAST OF W 1/4 COR SEC 29, FD GP 362.41 EAST OF W 1/4 COR SEC 29 WHICH IS 1.58' SOUTH OF E/W 1/4 LINE. DROVE GP ON LINE WITH W 1/4 COR & CENTER OF SEC 29. @ CENTER OF SEC 29 FD MONUMENT & FD OLD GP 330' WEST OF CENTER OF SEC 29.
- 1971 LEE S13364 CSM 2 PG 140 MORGAN FARM FROM W 1/4 COR SEC 29 S88-49-19E 1331.00 TO FD PIN.
- 1982 WISCONSIN ADMINISTRATIVE ACT ADOPTED & REQUIRED ALL SURVEYORS TO FILE U.S. LAND SURVEY MONUMENT RECORDS FOR SECTION CORNERS THAT WERE ESTABLISHED OR DID NOT HAVE 4 REFERENCE TIES.
- 1987 LEE CSM VOL 13 PG 102. CALLS FOR 2663.81 TO NE 32, 2663.81 TO NW COR OF SECTION 32. BEARINGS INDICATE CORNER IS ON LINE WITH THE NW & NE CORNERS OF SEC 32. THERE IS A PIPE 124.66 WEST OF THE CORNER. S88-53-24E 5327.61 FROM SW TO SE CORNERS OF SEC 29. LEGEND CALLS FOR MONUMENTS @ THE SW & SE CORNERS OF SEC 29 BUT NOTHING AT THE S 1/4 COR SEC 29. CALLS FOR S88-53-24E 124.66 FROM FD PIN ON SECTION LINE TO S 1/4 COR SEC 29. DRAWING SHOWS NOTHING AT S 1/4 COR SEC 29.
- 1995 BARNES V-7 & OBSERVATION SHEET #737 FOUND 1"X2"X12" WOOD HUB 1' BELOW PAVEMENT & @ PVMT CENTER. FOUND NATURAL GROUND ABOUT 3' BELOW PAVEMENT. DUG 6' DEEP AND FOUND NOTHING. WOOD HUB IS IN HARMONY WITH HOBART'S SUBDIVISION OF SECTION 29 AND HIS BEARING TO THE SW CORNER OF SEC 29. ACCEPTED FOUND HUB. EXCAVATION LIMITS ARE 8.4' SOUTH OF HUB, 4.2 EAST, 5.2 WEST, & 4 NORTH. PK 5.73 TO NORTHEAST & PK 7.34 TO NORTHWEST. HUB IS AT PVMT CENTER. DID NOT FIND MONUMENT ON LINE BETWEEN SW & SE CORNERS @ MID POINT.
- 1995 BARNES VOL 6 PG 444 RECORD MEASUREMENTS OF SEC 29 ANGLE 91-14-58 @ SW COR SEC 29 FROM W 1/4 COR SEC 29 TO HUB @ S 1/4 COR SEC 29. S89-30-01E 2668.60 FROM SW COR TO S 1/4 COR SEC 29, S89-22-57E 2658.92 FROM S 1/4 COR SEC 29 TO SE COR SEC 29.

Doc#

Encls

*Donald Barnes*  
10/23/2012

SHEET 2 OF 6

CORNER CODE V-7(1)

TU604 S1/4CORSEC29 TURTLE-TWP  
 1996 KREBS #8902 NO CALL FOR S 1/4 COR SEC 29. FROM S 1/16TH COR OF SW 1/4 SEC 29 1331.90 S88-49-04E 1135.58 ALONG SEC LINE.  
 1996 KREBS #8893 S88-49-04E 5327.59 BETWEEN SW & SE CORNERS OF SEC 29  
 1997 LULLOFF #08585 TOWER S 1/4 COR SEC 29 TO SE COR SEC 29 S89-22-56E 2658.93. BEARINGS BASED ON GRID COUNTY SYS. COUNTY NORTH IS 0-03-49 WEST OF TRUE NORTH.  
 2003 HOULE GCM VOL 26 PG 334 & 341 S0-53-53E 5303.58 FROM N 1/4 COR SEC 29 TO S 1/4 COR SEC 29. S 1/4 COR SEC 29 BASED UPON ROCK COUNTY COORDINATES  
 2006 HOULE BK 24 P 253 @ SW 28 N89-22-55W ALONG SEC LINE, S88-56-06E 328.62 ALONG SEC LINE, & S0-28-44E 2665.60 TO E 1/4 COR SEC 33  
 2006 GARDE S14499 GCM 24 PG 247 GATEWAY BUSINESS PARK FINAL PLAT NO. 2 BK 32 PG 760 N89-22-25W 741.17 FROM SE COR SEC 29 ALONG SEC LINE & S0-28-44E 2665.60 FROM SE COR SEC 29 TO E 1/4 COR SEC 32.  
 2012 COUNTY ADJUSTMENT S89-26-28E 5327.51 FROM SW TO SE CORNERS OF SEC 29. HUB IS 2.76' NORTH OF A LINE BETWEEN THE SW & SE CORNERS OF SEC 29. ISSUE WAS RAISED ABOUT RATHER THE FD HUB OR THE SINGLE PROPORTIONATE METHOD WAS THE CORRECT CORNER. I RESERCHED THE TRACT INDEX AND OUR RECORDS. I BELIEVE THE ACCEPTANCE OF THE HUB WAS CORRECT. EITHER POSITION DISTURBES A FEW EXISTING SURVEYS.

C) Was the corner restored through acceptance of (1) an obliterated evidence location, or, (2) a found perpetuated location?

ACCEPTED FD HUB BECAUSE:

- 1) LEE'S GCM CALLS FOR THE S 1/16TH COR OF THE SW 1/4 OF SEC 29 AS BEING 5' WEST OF A N/S FENCE. THE HUB WOULD PLACE THIS 1/16TH CORNER CLOSER TO THE N/S FENCE.
- 2) THE HUB IS IN HARMONY WITH RECORD DISTANCES AND PRORATION OF THOSE DISTANCES IN SEC 29. MY ANGLE OF 91-14-58 @ THE SW COR OF SEC 29 IS THE SAME AS HOBART'S ANGLE OF 91-15. HOWEVER, HOBART'S PRORATION FROM THE SW TO S 1/4 COR IS 0.39' FROM THE MID POINT. THE MID POINT IS IN THE LIMITS OF THE EXCAVATION.

DID NOT ACCEPT LEE'S POSITION BECAUSE:

- 1) LEE DID NOT FILE A U.S. SURVEY MONUMENT RECORD
- 2) HE DID NOT EXCAVATE FOR EXISTING MONUMENTS.
- 3) HE DID NOT ATTEMPT TO USE THE RECORD MONUMENTS AND DATA FOR SEC 29. INSTEAD HE ESTABLISHED THE POSITION MIDWAY ON LINE WITH THE SW & SE CORNERS.
- 4) I BELIEVE THE CORNER IS NOT "LOST".

D) Describe any material discrepancy between the location of the corner as restored or reestablished and the location of that corner as previously restored or reestablished by distance and direction. Show the discrepancy on the plan view drawing under (a), above. Show the distances between the corner as previously restored or reestablished and (1) the corner as restored or reestablished, and (2) to at least 4 of the witness monuments shown on the drawing in (a), above.

THE MID POINT ON THE SW TO SE CORNER OF SEC 29 IS S61-05-49W 5.58' FROM THE HUB. THE LOCATION OF THE HUB, MID POINT, AND POSITION OF LEE'S LOCATION WITH THE FD PINS IS SHOWN IN THE MAP.

I, **Donald Barnes**, hereby certify that the corner location as identified by the corner code index was determined by me under my direction and control and that this U.S. Public Land Survey Monument Record is correct and complete to the best of my knowledge and belief.

*Donald Barnes*

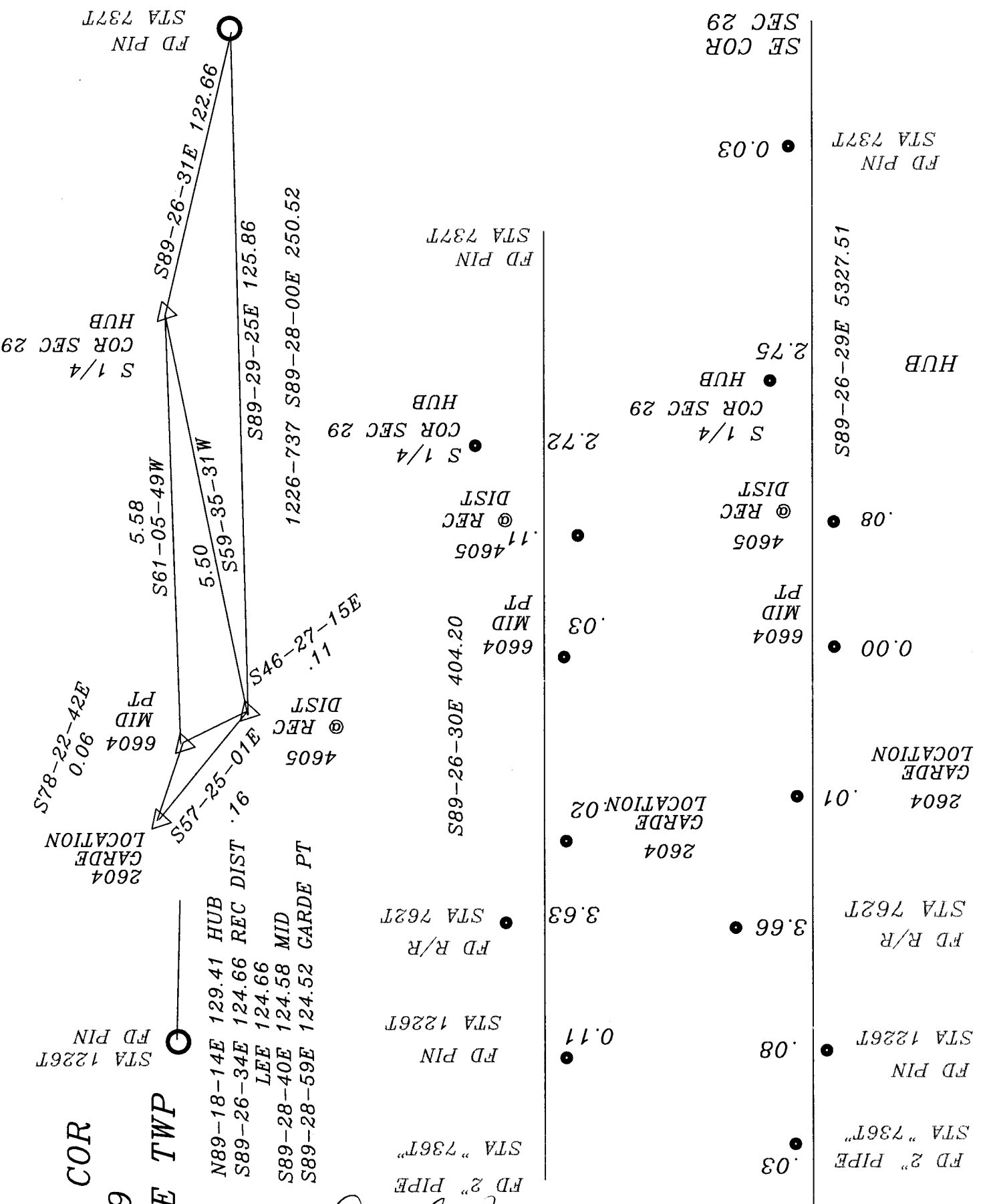
SHEET 3 OF 6

OCT 29, 2012 A.E. 7.08 REQUIREMENT

CORNER CODE V-7(1)



S 1/4 COR  
SEC 29  
TURTLE TWP



N89-18-14E 129.41 HUB  
S89-26-34E 124.66 REC DIST  
LEE 124.66  
S89-28-40E 124.58 MID  
S89-28-59E 124.52 GARDE PT

*Donald Barnes*  
OCT 29, 2012  
EMBOSSSED SEAL

