

U.S. PUBLIC LAND SURVEY MONUMENT RECORD

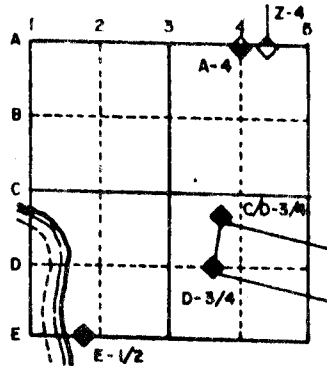
For Public Land Survey Corners in the
T. 3 N., R. 11 E.

CORNER CODE INDEX

	1	2	3	4	5	6	7	8	9	10	11	12	13	14	15	16	17	18	19	20	21	22	23	24	25
A																									
B																									
C	6																								
D		5																							
E			4																						
F				3																					
G					2																				
H																									
I																									
J																									
K																									
L																									
M																									
N																									
O																									
P																									
Q																									
R																									
S																									
T																									
U																									
V																									
W																									
X																									
Y																									
Z																									

PLACE MONUMENT SYMBOL (◆) AT PROPER
LOCATION ON ABOVE INDEX

EXAMPLE



CENTER TWP
ROCK COUNTY WI

IF AVAILABLE
STATE PLANE COORDINATES

North (Y) _____ Eleve. (Z) _____
 East (X) _____ Zone _____
 Hor. Datum _____ Vert. Datum _____

(a.)

◆ CORNER MONUMENT

○ WITNESS MONUMENT



FIELD BOOK _____ PAGE # _____

MICROFILMED

SHOW A PLAN VIEW DRAWING DEPICTING THE CORNER MONUMENT AND SURROUNDING PHYSICAL FEATURES, INCLUDING THE EXCAVATION AREA AND DEPTH. THE CORNER MONUMENT SHALL HAVE THE FOLLOWING CHARACTERISTICS: 1) HAVE AT LEAST TWO PREDETERMINED BREAK-OFF POINTS. 2) IF BROKEN, LEAVE A PERMANENTLY MAGNETIZED REMNANT AT THE ORIGINAL POINT. 3) MUST BE EXTENDABLE. 4) THE CAP IS INSCRIBED: ROCK COUNTY SURVEY MONUMENT - PENALTY FOR DISTURBING MARKER. 5) OR AN EXISTING CUT LIMESTONE. AN IRON PIPE 1 1/2" x 4'0" (MINIMUM) MAY BE USED IN AREAS WHERE GROUND WATER IS WITHIN ONE FOOT OF THE SURFACE. IF THE CORNER IS OCCUPIED BY AN IMPROVEMENT (MANHOLE, BURIED CABLE, ETC.) ANY DURABLE, DISTINCT MONUMENT MAY BE USED. CORNERS SHALL BE REFERENCED WITH AT LEAST 4 DURABLE WITNESS MONUMENTS. WITNESS MONUMENTS SHALL BE MADE OF CONCRETE, NATURAL STONE, IRON OR OTHER EQUALLY DURABLE MATERIAL, EXCEPT WOOD. DESCRIBE THE CORNER AND THE WITNESS MONUMENTS.

CORNER CODE:

Z 15(1)

(a) Describe any record evidence, monument evidence, occupational evidence, testimonial evidence or any other material evidence you considered, and whether the monument was found or placed.

1833 HARRISON SET QUARTER SECTION POST IN PRAIRIE AND MADE MOUND.

1866 LOCKE REMONUMENTATION INTERSECTED 1/4 LINE FOR SEC 34 TOWN 3 N AT CORNER. FOUND OLD STAKE IN CENTER OF HIGHWAY AND IN LINE OF FENCES RUNNING NORTH AND SOUTH. SET 1/4 CORNER OF SECTION 3 13.20 EAST OF SOUTH QUARTER CORNER THE SECTION CORNERS WEST BEING LAST. CALLS FOR A DISTANCE OF 2658.48 TO THE SW CORNER AND 2668.05 TO THE SE CORNER. PLACED CUT LIMESTONE AT THE NORTH QUARTER CORNER. (POSSIBLY AT THE SOUTH QUARTER CORNER)

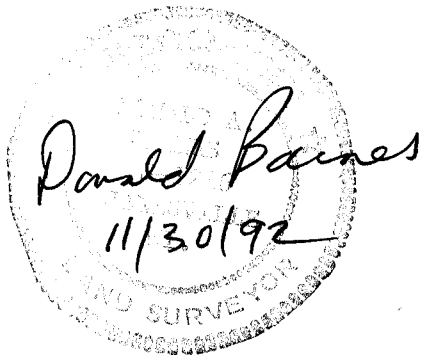
1933 SUNNY VOL 3 PG 235 SHOWS THAT HE PLACED THE NORTH QUARTER CORNER OF SECTION 3. HE SHOWS THAT THE S 1/4 QUARTER OF SECTION 34 IS WEST 13.2 BUT STATES NOTHING ABOUT THE CORNER.

1988 BARNES Z-15 DECLARED CORNER OBLITERATED AND PLACED ON LINE WITH THE N 1/4 CORNER OF SECTION 3 AND THE NW CORNER OF SECTION 3 AT RECORD DISTANCE.

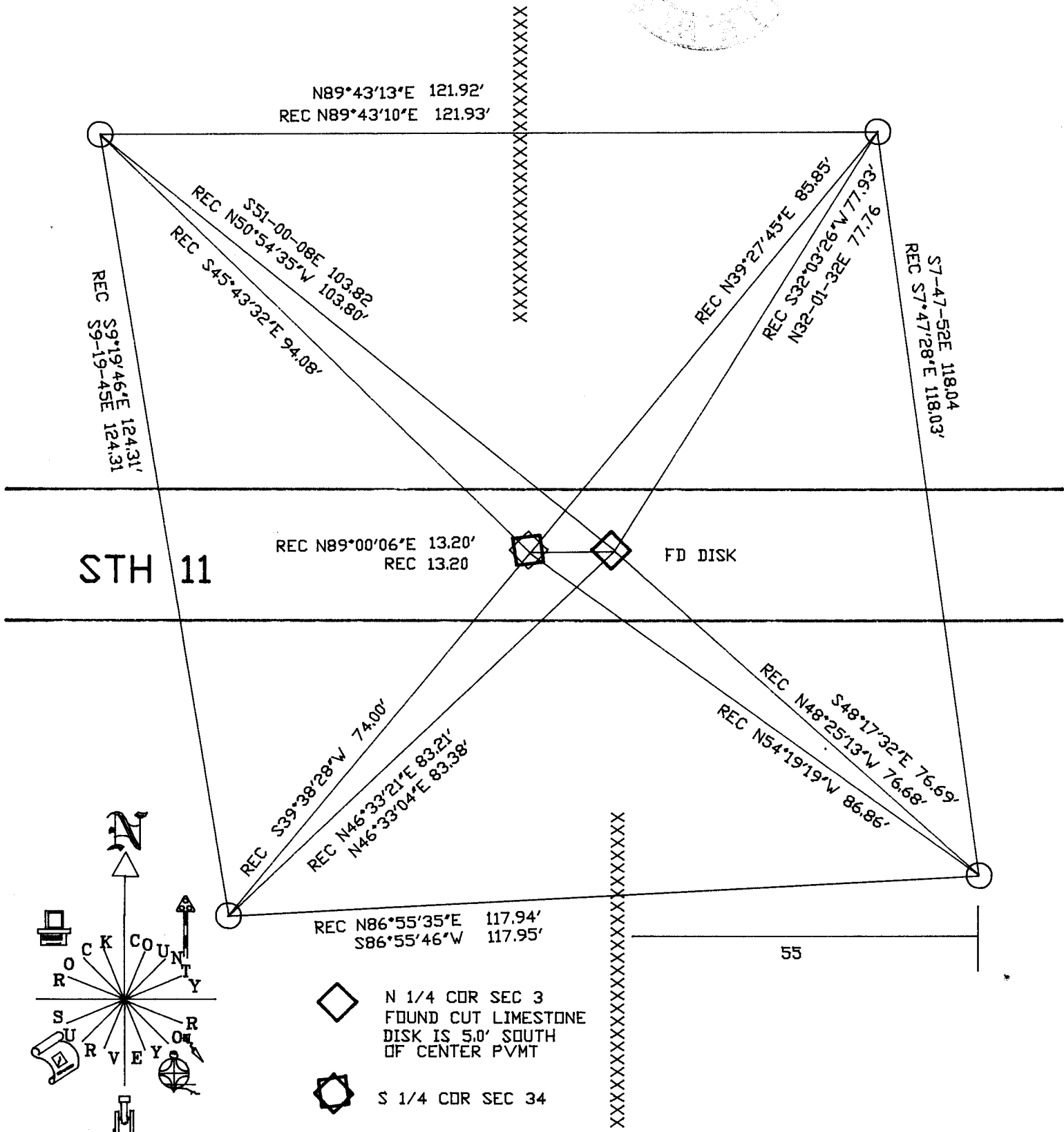
(c) Was the corner restored through acceptance of (1) an obliterated evidence location, or, (2) a found perpetuated location?

DOT DID NOT INSTALL A MONUMENT. ACCEPTED LOCATION AS PERPETUATED BY RECORD TIE DISTANCES.

I, Donald Barnes, hereby certify that the corner points as identified by the corner code index were, in a field survey on November 9, 1992, established, re-established, monumented, re-monumented, recovered or restored as expressed below and in conformance with the regulations and rules as required in the current manual of survey instructions of the United States Department of Interior, Bureau of Land Management.



Donald Barnes
11/30/92



215(1)