

Paper weight-110# (minimum)

Black nonfading ink required

U.S. PUBLIC LAND SURVEY MONUMENT RECORD

For Public Land Survey Corners In:
T. 1 N. R. 13 E. 4th P.M.

WI ADMINISTRATIVE CODE A-E 7.08 REQUIREMENT
REV 10/23/2004 USMONREC.DWG

CORNER CODE INDEX

A	1	2	3	4	5	6	7	8	9	10	11	12	13	14	15	16	17	18	19	20	21	22	23	24	25	A	
B		6																								B	
C			5																								C
D				4																							D
E					3																						E
F						2																					F
G							1																				G
H								7																			H
I									8																		I
J										9																	J
K											10																K
L												11															L
M													12														M
N														13													N
O															14												O
P																15											P
Q																	16										Q
R																		17									R
S																			18								S
T																				19							T
U																					20						U
V																						21					V
W																							22				W
X																							23				X
Y																								24			Y
Z																									25		Z

PLACE MONUMENT SYMBOL AT PROPER LOCATION ON ABOVE INDEX

TURTLE TWP
ROCK COUNTY WI

IF AVAILABLE
ROCK COUNTY COORDINATES PREFERRED

North _____ Elev. _____

East _____

Hor. Datum _____ Vert. Datum _____

LATITUDE _____ ELLIPS. HT. _____

LONGITUDE _____

NAD83(91) _____ NETWORK ADJ. YR _____

GPS (X) _____ TRAVERSE (X) _____

BASED ON THE FOLLOWING CONTROL:

CORNER MONUMENT WITNESS MONUMENT

BEARINGS ARE BASED ON: _____

FIELD BOOK _____ PAGE # _____

SHEET 1 OF 4

SHOW A PLAN VIEW DRAWING DEPICTING THE CORNER MONUMENT AND SURROUNDING PHYSICAL FEATURES, INCLUDING THE EXCAVATION AREA AND DEPTH.

PLANNING & ZONING COMMITTEE ADOPTED THIS FORM ON 12/2/1982

CORNER CODE A-3(1)

TU502 N1/4CORSEC6

(B) Describe any record evidence, monument evidence, occupational evidence, testimonial evidence or any other material evidence you considered, and whether the monument was found or placed.

- 1835 ORIG GOV PLAT 2640.0 TO NE COR SEC 6 & 2432.10 TO NW COR SEC 6. [ORIG SURVEYOR DID NOT ESTABLISH]
- 1865 LOCKE VOL 1 PG 235 FD STAKE SET BY AS COL. MILLER ON CORNER. 3016.20 TO W. BAR POST ABOUT 3 INCHES N. OF CENTER. 5655.21 TO S 1/4 COR SEC 6, 2629.66 FROM CENTER TO E 1/4 COR SEC 6, & 2366.32 FROM CENTER TO W 1/4 COR SEC 6.
- 1871 RUGER REMONUMENTATION PG 219 & 220.
EAST ON SOUTH LINE OF SW 1/4 OF SEC 31 ON A VAR 5-10 AT
2590.17 INTERSECTED 1/4 LINE AT 1/4 COR FOUND OLD STAKE A COR.
EAST ON SOUTH LINE OF SE 1/4 OF SEC 31 ON A VAR 4-53 AT
2637.36 INTERSECTED EAST BOUNDARY LINE 1.98' SOUTH OF COR FOUND STAKE SURROUNDED BY 3 HARD HEAD STONES AT COR. COR VAR 4-56.
- 1881 HOLMES VOL 2 PG 338 2591.16 FROM S 1/4 COR SEC 31 TO SW COR SEC 31, 2635.38 TO SE COR SEC 31, USED TO SUBDIVIDE SEC 31. CENTER OF SEC 31 TO E 1/4 COR SEC 31 IS 2635.38 & 2611.62 FROM CENTER TO W 1/4 COR SEC 31.
- 1893 BLEEDORN VOL 2 PG 480 CALLS FOR "MON" @ S 1/4 COR SEC 31. VAR 3-30 TO MON @ N 1/4 COR SEC 31, 2649.90 TO SW COR SEC 31.
- 1960 BATTERMAN VOL 4 PG 54 FD 6"X6" CUT LIMESTONE @ S 1/4 COR SEC 31. REFERENCED SAME.
- 1968 HENKE CSM VOL 1 PG 172 R/R SPIKE @ S 1/4 COR SEC 31. @ S 1/4 COR SEC 31 FROM SOUTH LINE OF SEC SW 1/4 SEC 31 S88-45W & NORTH 33.01 TO PIPE (SE COR CSM LOT)
- 1971 SCHIMEALL CSM VOL 2 PG 137 PIN @ N 1/4 COR SEC 6. CSM LOT COR IS 4.00 TO THE EAST. SHOWS 33' @ R/W & 40.00 R/W @ LOT COR. CALLS FOR PIPE 40.00 SOUTHERLY OF S 1/4 COR SEC 31, & 159.04 FROM S 1/4 COR SEC 31 TO PIPE @ NW COR OF CSM LOT
- 1986 BARNES A-3 FD R/R SPIKE & REPLACED IT WITH A POLY MON. THE MON. IS WITHIN 0.68' OF THE PRORATION OF THE ORIGINAL GOV. PLAT DISTANCES AND THE MEASURED DISTANCES. S89-43-21E 2427.32 TO NW COR SEC 6, S89-55-42E 2636.35 TO NE COR SEC 6. 163.06 WEST OF THE S 1/4 COR SEC 31. S89-43-26W 2590.38 FROM S 1/4 COR TO SW COR SEC 36 & S89-54-24E 2636.98 TO SE COR SEC 31. REFERENCED SAME.
- 1986 BARNES Z-3 @ TH S 1/4 COR SEC 31 FD R/R SPIKE & REFERENCED WITH PK 1.00 TO THE EAST & A PK 1.00 TO THE NORTH. 1/2 DEEP FD A R/R SPIKE WHICH WAS 0.97' FROM THE EAST PK & 0.92 FROM THE NORTH PK. 1.2' FD CUT LIMESTONE. THE STONE IS 1.04' FROM THE EAST PK & 1.00' FROM THE NORTH PK. FD RECORD REFERENCE PIPES @ THE S 1/4 COR SEC 31. REPLACED THE NW REFERENCE PIPE. @ THE N 1/4 COR SEC 6 REFERENCED THE CORNER. FD PIPE JUST EAST OF THE N 1/4 COR SEC 6. 163.04 BETWEEN THE LS & THE N 1/4 COR SEC 6. SET POLY MON ON TOP OF THE STONE. FD PIPE IS THE LOT CORNER OF CSM VOL 2 PG 137. S 1/4 COR SEC 31 ELEV 825.2. 214,511.52; 2,268,943.09

Donald Barnes
7-23-2010

TU502 N1/4CORSEC6
 1988 FARRIS #12404 @ S 1/4 COR SEC 31 FD ALUM DISK IN AGREEMENT WITH MON. REC. TIES. 214,511.52; 2,268,943.09. S89-43-26W 2590.34 TO FD PK @ SW COR SEC 31 & N1-35-35W 2638.82 TO CENTER OF SEC 31.
 1990 LEE GCM VOL 15 PG 21 S 1/4 COR SEC 31 TO MON BOX @ SW COR SEC 31 IS N88-40-57W & NORTH FROM S 1/4 COR SEC 31 ALONG 1/4 LINE.
 1994 COMBS #9581 FD ALUM. @ N 1/4 COR SEC 6 & S 1/4 COR SEC 31. N89-26-20E 159.04 BETWEEN S 1/4 COR SEC 31 & FD PIPE. S89-26-20W 4.00 FROM FD PIPE TO FD ALUM @ N 1/4 COR SEC 6. FROM PIPE S0-11-45E 33.0 TO PIPE @ PROP. COR.
 1995 WPL (BARNES) Z-3 (1) LAT(1983) 42-35-2.931803 ; LONG 89-00-05.5612315. COUNTY CONVERTED BY ME 233,142.754; 499,035.443. THESE ARE THE N 1/4 COR SEC 6. (2010 ADJUSTMENT 233,142.945: 499,035.62)

@ N 1/4 COR SEC 6 FD ALUM. & @ S 1/4 COR SEC 31 FD POLY WITH TOP BROKE OFF. FD PIPE NEAR N 1/4 COR SEC 6. FD PIPE IS GCM LOT COR (1971 GCM VOL2 PG 137) & WAS NOT INTENDED TO BE 1/4 COR. AFTER NEW PVMT I PLACED SURVEY SPIKE STAMPED "SURVEY MARKER" @ EACH 1/4 CORNER.

C) Was the corner restored through acceptance of (1) an obliterated evidence location, or, (2) a found perpetuated location?

ACCEPTED FD ALUM. POSITION IS IN HARMONY WITH PRORATION OF STAKE FD BY LOCKE IN 1865.

D) Describe any material discrepancy between the location of the corner as restored or reestablished and the location of that corner as previously restored or reestablished by distance and direction. Show the discrepancy on the plan view drawing under (a), above. Show the distances between the corner as previously restored or reestablished and (1) the corner as restored or reestablished, and (2) to at least 4 of the witness monuments shown on the drawing in (a), above.

NONE

(E) Was the corner reestablished through lost corner proportionate methods? If so, show the method, including the directions and distances to other public land survey corners used as evidence or used for proportioning the corner location.

I, **Donald Barnes**, hereby certify that the corner location as identified by the corner code index was determined by me under my direction and control and that this U.S. Public Land Survey Monument Record is correct and complete to the best of my knowledge and belief.



Seal

7-23-2010

Emboss

SHEET 2 OF 4

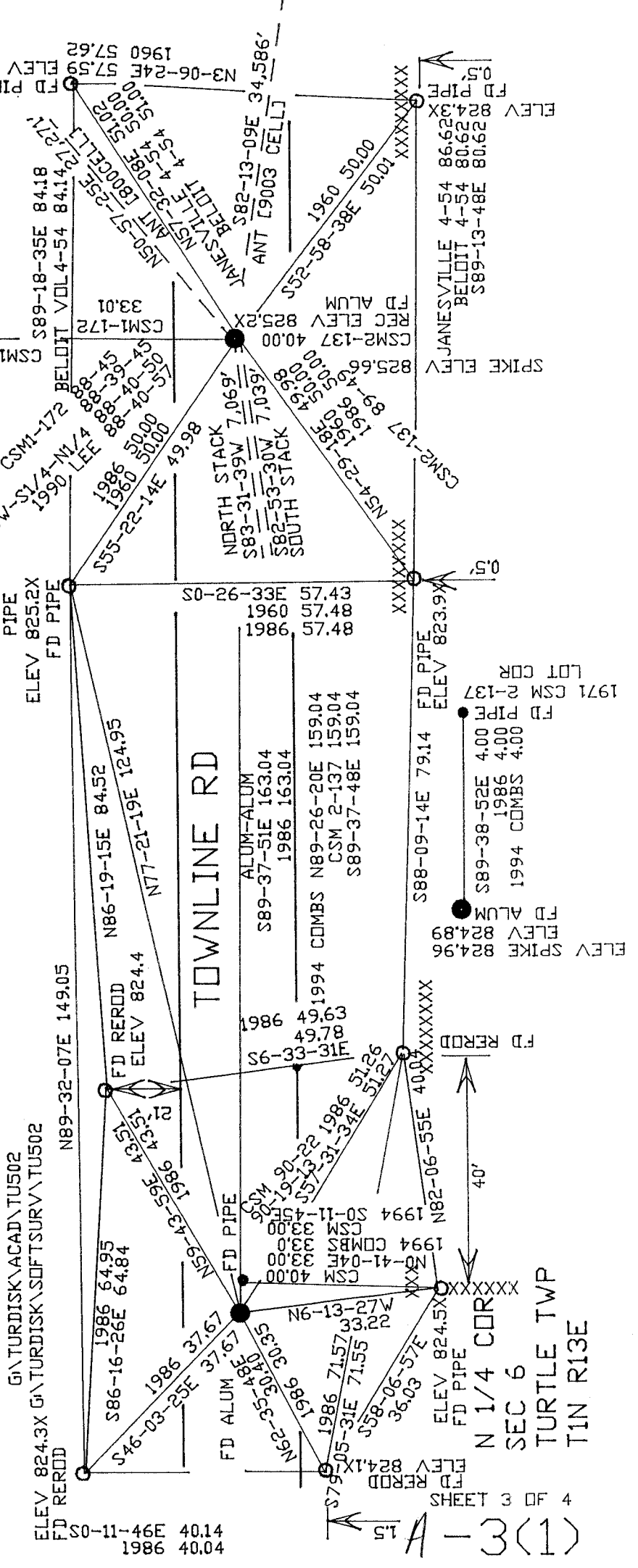
CORNER CODE **A-3(1)**

A.E. 7.08 REQUIREMENT

7-23-2010
David Barney
 EMBOSSED SEAL

OBSERVATION SHEET #2051T
 FB#2 PG 54
 FB#3 PG 29
 VOL 4 PG 54

S 1/4 COR
 SEC 31
 LA PRAIRIE TWP
 T2N R13E



G:\TURDISK\ACAD\TUS02
 G:\TURDISK\SOFTSURV\TUS02

ELEV 824.3X
 FD REROD
 80-11-46E 40.14
 1986 40.04

SHEETS 3 OF 4

A-3(1)

LA PRAIRIE TWP
T2N R13E

<p>1835 MULLET 2640.00 1871 RUGER 2647.26 1876 RUGER 2645.04 1881 FARRIS 2645.04 N-ER-33V 2645.08</p>	<p>1895 BARNES 3085.28 50-11-1ER 3085.28 1895 BARNES 3085.28 1895 UNK #453 3087.48 1865 UNK #453 3085.28 1865 LOCKE VI-235 3085.28</p>	<p>1895 BARNES 3085.28 1895 UNK #453 3087.48 1865 UNK #453 3085.28 1865 LOCKE VI-235 3085.28</p>	<p>1895 BARNES 3085.28 1895 UNK #453 3087.48 1865 UNK #453 3085.28 1865 LOCKE VI-235 3085.28</p>
<p>1895 BARNES 3085.28 1895 UNK #453 3087.48 1865 UNK #453 3085.28 1865 LOCKE VI-235 3085.28</p>	<p>1895 BARNES 3085.28 1895 UNK #453 3087.48 1865 UNK #453 3085.28 1865 LOCKE VI-235 3085.28</p>	<p>1895 BARNES 3085.28 1895 UNK #453 3087.48 1865 UNK #453 3085.28 1865 LOCKE VI-235 3085.28</p>	<p>1895 BARNES 3085.28 1895 UNK #453 3087.48 1865 UNK #453 3085.28 1865 LOCKE VI-235 3085.28</p>
<p>1895 BARNES 3085.28 1895 UNK #453 3087.48 1865 UNK #453 3085.28 1865 LOCKE VI-235 3085.28</p>	<p>1895 BARNES 3085.28 1895 UNK #453 3087.48 1865 UNK #453 3085.28 1865 LOCKE VI-235 3085.28</p>	<p>1895 BARNES 3085.28 1895 UNK #453 3087.48 1865 UNK #453 3085.28 1865 LOCKE VI-235 3085.28</p>	<p>1895 BARNES 3085.28 1895 UNK #453 3087.48 1865 UNK #453 3085.28 1865 LOCKE VI-235 3085.28</p>
<p>1895 BARNES 3085.28 1895 UNK #453 3087.48 1865 UNK #453 3085.28 1865 LOCKE VI-235 3085.28</p>	<p>1895 BARNES 3085.28 1895 UNK #453 3087.48 1865 UNK #453 3085.28 1865 LOCKE VI-235 3085.28</p>	<p>1895 BARNES 3085.28 1895 UNK #453 3087.48 1865 UNK #453 3085.28 1865 LOCKE VI-235 3085.28</p>	<p>1895 BARNES 3085.28 1895 UNK #453 3087.48 1865 UNK #453 3085.28 1865 LOCKE VI-235 3085.28</p>
<p>1895 BARNES 3085.28 1895 UNK #453 3087.48 1865 UNK #453 3085.28 1865 LOCKE VI-235 3085.28</p>	<p>1895 BARNES 3085.28 1895 UNK #453 3087.48 1865 UNK #453 3085.28 1865 LOCKE VI-235 3085.28</p>	<p>1895 BARNES 3085.28 1895 UNK #453 3087.48 1865 UNK #453 3085.28 1865 LOCKE VI-235 3085.28</p>	<p>1895 BARNES 3085.28 1895 UNK #453 3087.48 1865 UNK #453 3085.28 1865 LOCKE VI-235 3085.28</p>

D. Barnes
7-23-2010 A-3(1)