

PUBLIC LAND SURVEY MONUMENT RECORD

For Public Land Survey Corners in the

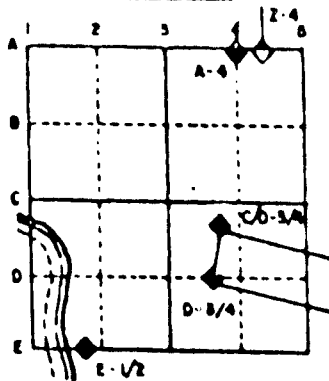
T. 1 N., R. 13 E.

CORNER CODE INDEX

	1	2	3	4	5	6	7	8	9	10	11	12	13	14	15	16	17	18	19	20	21	22	23	24	25
A																									
B	6	5	4	3	2																				
C																									
D	7	8	9	10	11	12																			
E																									
F																									
G	16	17	18	19	20	21																			
H																									
I																									
J																									
K																									
L	19	20	21	22	23	24																			
M																									
N																									
O																									
P	29	28	27	26	25																				
Q																									
R																									
S	30	29	28	27	26	25																			
T																									
U																									
V																									
W	31	32	33	34	35	36																			
X																									
Y																									
Z																									

PLACE MONUMENT SYMBOL (●) AT PROPER LOCATION ON ABOVE INDEX

EXAMPLE



TURTLE TWP
ROCK COUNTY WI

IF AVAILABLE
STATE PLANE COORDINATES

North (Y) 227,455.01 Elev. (Z) _____
 East (X) 498,766.62 Zone _____
 Hor. Datum COUNTY Vert. Datum _____

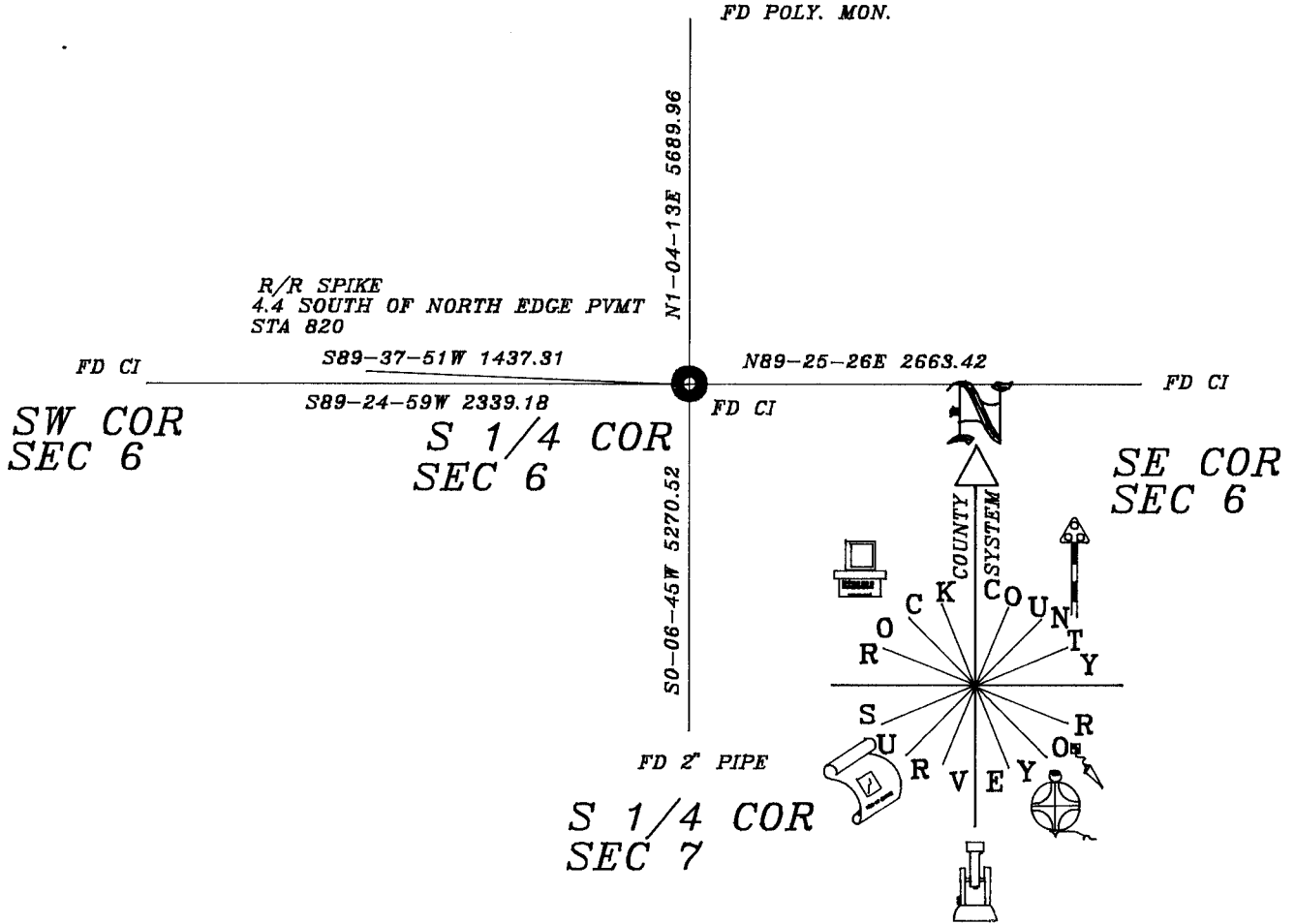
◆ CORNER MONUMENT

○ WITNESS MONUMENT

N 1/4 COR
SEC 6

FD POLY. MON.

BEARINGS ARE BASED ON:



SHEET _____ OF _____ E3(1)

CORNER CODE _____

(B) Describe any record evidence, monument evidence, occupational evidence, testimonial evidence or any other material evidence you considered, and whether the monument was found or placed.

1836 LYON SET QUARTER SECTION POST & MADE MOUND OF EARTH & SOD.
2318.58 TO SW COR SEC 6 & 2640 TO SE COR SEC 6.
1865 LOCKE VOL 1 PG 235 SET STAKE QUARTER POST GONE. 2657.16 TO SE COR SEC 6, 2336.90 TO SW COR SEC 6, & 2638.81 TO CENTER SEC 6.
1882 HOLMES VOL 2 PG 357 STAKE & STONES DESCRIBED BY LOCKE. 2658.15 TO SE COR SEC 6.

FOUND CI MONUMENT. S89-24-59W 2339.18 TO SW COR SEC 6 & N89-25-26E 2663.41 TO SE COR SEC 6. MONUMENT IS 0.16' SOUTH OF A LINE BETWEEN THE SW & SE CORNERS OF SEC 6.

C) Was the corner restored through acceptance of (1) an obliterated evidence location, or, (2) a found perpetuated location?
ACCEPTED FOUND PERPETUATED LOCATION.

D) Describe any material discrepancy between the location of the corner as restored or reestablished and the location of that corner as previously restored or reestablished by distance and direction. Show the discrepancy on the plan view drawing under (a), above. Show the distances between the corner as previously restored or reestablished and (1) the corner as restored or reestablished, and (2) to at least 4 of the witness monuments shown on the drawing in (a), above.

(E) Was the corner reestablished through lost corner proportionate methods? If so, show the method, including the directions and distances to other public land survey corners used as evidence or used for proportioning the corner location.
NO

I, Donald Barnes, hereby certify that the corner points as identified by the corner code index were, in a field survey on, 1994, established, re-established, monumented, re-monumented, recovered or restored as expressed below and in conformance with the regulations and rules as required in the current manual of survey instructions of the United States Department of Interior, Bureau of Land Management.

seal
Donald Barnes
9/12/95

COUNTY SURVEYOR FILING DATA
Date of computer entry _____
Date microfilmed _____
Number of included sheets _____
CORNER CODE

EMBOSS LAND SURVEYOR SEAL A-E 7.08 REQUIREMENT

F3(1)