

Paper weight-110# (minimum)

Black nonfading ink required

# U.S. PUBLIC LAND SURVEY MONUMENT RECORD

For Public Land Survey Corners In:

WI ADMINISTRATIVE CODE A-E 7.08 REQUIREMENT

T. 13 N. R. 13 E. 4th P.M.

REV 10/23/2004

USMONREC.DWG

CORNER CODE INDEX

TURTLE TWP

ROCK COUNTY WI

IF AVAILABLE

ROCK COUNTY COORDINATES PREFERRED

North \_\_\_\_\_ Elev. \_\_\_\_\_

East \_\_\_\_\_

Hor. Datum \_\_\_\_\_ Vert. Datum \_\_\_\_\_

LATITUDE \_\_\_\_\_ ELLIPS. HT. \_\_\_\_\_

LONGITUDE \_\_\_\_\_

NAD83(91) \_\_\_\_\_ NETWORK ADJ. YR \_\_\_\_\_

GPS (X) \_\_\_\_\_ TRAVERSE (X) \_\_\_\_\_

BASED ON THE FOLLOWING CONTROL:

	2	3	4	5	6	7	8	9	10	11	12	13	14	15	16	17	18	19	20	21	22	23	24	25	
A																									
B																									
C	6																								
D																									
E																									
F																									
G	7																								
H																									
J																									
K	18																								
L																									
M																									
N																									
O																									
P	19																								
Q																									
R																									
S																									
T																									
U	30																								
V																									
W																									
X	31																								
Y																									
Z																									
	1	2	3	4	5	6	7	8	9	10	11	12	13	14	15	16	17	18	19	20	21	22	23	24	25

PLACE MONUMENT SYMBOL  AT PROPER LOCATION ON ABOVE INDEX

CORNER MONUMENT

WITNESS MONUMENT

(a)

BEARINGS ARE BASED ON: \_\_\_\_\_

FIELD BOOK \_\_\_\_\_ PAGE # \_\_\_\_\_

SHEET 1 OF 4

SHOW A PLAN VIEW DRAWING DEPICTING THE CORNER MONUMENT AND SURROUNDING PHYSICAL FEATURES, INCLUDING THE EXCAVATION AREA AND DEPTH.

PLANNING & ZONING COMMITTEE ADOPTED THIS FORM ON 12/2/1982

CORNER CODE A-9(1)

**TU505    NEGORSEC5**

*(B) Describe any record evidence, monument evidence, occupational evidence, testimonial evidence or any other material evidence you considered, and whether the monument was found or placed.*

- 1835 BRINK    T2N R13E WEST SOUTH SIDE SECTION 33**
- 2640            SET QUARTER SECTION POST IN PRAIRIE IN MOUND PIT EAST OF POST 3.3'
- 5280            SET POST CORNER SECTIONS 32 & 33 IN PRAIRIE IN MOUND PIT SOUTH OF POST 3.96' LAND & C SAME.
- T2N R13E WEST SOUTH SIDE SECTION 32**
- 2640            SET QUARTER SECTION POST IN PRAIRIE IN MOUND PIT EAST OF POST 3.3'
- 5280            SET POST CORNER SECTIONS 31 & 32 IN PRAIRIE IN MOUND PIT SOUTH OF POST 3.96' LAND DRY ROLLING PRAIRIE FIRST RATE ROSIN WEED PRAIRIE GRASS
- 1836 LYON    (JULY) T2 R13E NORTH BETWEEN SECTIONS 32 & 33**
- 2640            SET QUARTER SECTION POST & MADE MOUND OF EARTH & SOD
- 5280            SET POST & MADE MOUND OF EARTH & SOD CORNER TO SECTIONS 28,29,32,&33 (LAND ROLLING PRAIRIE & FIRST RATE GROWTH GRASS & WEEDS
- 1836 LYON (APRIL 30TH) TURTLE TWP. NORTH BETWEEN SECTIONS 4 & 5**
- 2640.0          SET QUARTER SECTION POST & MADE MOUND OF EARTH & SOD
- 5544.0          ENTER ?? NORTH BOUNDARY 154.44' WEST OF POST & SET POST & MADE MOUND OF EARTH & SOD CORNER TO SEC 4 & 5. LAND ROLLING PRAIRIE & FIRST RATE. APRIL 30TH 1836
- NORTH BETWEEN SECTIONS 5 & 6**
- 2640.0          SET QUARTER SECTION POST & MADE MOUND OF EARTH & EARTH & SOD
- 5587.56        INTERSECTED NORTH BOUNDARY 163.68 WEST OF THE CORNER TO SECTIONS 31 & 32 & SET POST CORNER TO SECTIONS 5 & 6 MADE MOUND OF EARTH & SOD (LAND ROLLING; PRAIRIE & FIRST RATE GROWTH
- 1846 TWN RD REC BK 1 PG 5 COMMENCING AT THE QUARTER STAKE ON THE SOUTH SIDE OF SEC 33, T2, RANGE 13 TO RUN ON THE TOWN LINE AS FOLLOWS: TO RUN ON SAID LINE TILL IT COMES TO THE WEST SIDE OF SAID TOWN AND THERE INTERSECT THE ROAD RUNNING FROM JANESVILLE TO BELDIT. ALSO AT THE SAME TIME AND PLAGE, COMMENCING AT THE SOUTHWEST CORNER OF SEC 33, T2 RUNNING NORTH ON THE SECTION LINE PAST SINCLAIR'S; THENCE ALONG SAID LINE TILL IT STRIKES THE NORTH SIDE OF SAID TOWN AND THERE INTERSECTS A ROAD RUNNING TO JANESVILLE. WE THEREFORE ON THIS 13TH DAY OF JUNE 1846 DO DECLARE THE ABOVE LINES TO BE PUBLIC HIGHWAYS. THE ROADS TO BE SIX RODS (99') WIDE, 3 RODS (49.5') FROM THE CENTER LINE EACH WAY.**
- 1863 LOCKE VOL 1 PG 178 SET LARGE HARDHEAD 156.75' EAST OF NE COR SEC 5. VAR 7-15 2702.70' TO E 1/4 COR SEC 32, VAR 7-15 2702.70' TO E 1/4 COR SEC 32 TO NE COR SEC 32, 1316.86' FROM SE COR SEC 32 TO S 1/16TH COR OF SE 1/4 SEC 32, 2633.73 FROM SE TO S 1/4 COR SEC 32, 2633.73 FROM S 1/4 COR SEC 32 TO SW COR SEC 32. @ S 1/4 SEC 32 SET LARGE LIMESTONE & USED COR TO SUBDIVIDE SEC 32.**

SHEET 1 OF 4  
CORNER CODE A-9(1)

*Donald Barnes*  
*10/26/09*

TU505 NECORSECS

- 1870 RUGER REMONUMENTATION-SET CUT LIMESTONES PG 220  
EAST ON SOUTH LINE OF SW 1/4 OF SEC 32. ON A VAR 5-10  
AT  
2634.39 INTERSECTED 1/4 LINE 4.62' SOUTH OF 1/4 COR  
FD OLD STAKE AT COR. COR. VAR 5-16  
EAST ON SOUTH LINE OF SE 1/4 OF SEC 32. ON A VAR 4-56  
AT  
2635.38 INTERSECTED EAST BOUNDARY LINE 3.3' NORTH  
OF COR. FOUND LARGE HARD HEAD STONE AT  
COR. COR. VAR 4-52  
PG 236  
NORTH ON EAST LINE OF SE 1/4 OF SEC 32. ON A VAR 6-00  
AT  
2645.28 INTERSECTED 1/4 LINE 3.96' WEST OF 1/4 COR  
FD STONE AT COR. COR VAR 5-55  
NORTH ON EAST LINE OF NE 1/4 OF SEC 32. ON A VAR 5-54  
AT  
2647.76 INTERSECTED NORTH BOUNDARY LINE 7.92'  
WEST OF COR. COR. VAR 5-44  
PG 220 & 221  
EAST ON SOUTH LINE OF SW 1/4 OF SEC 33. ON A VAR 4-55  
AT  
2630.76 INTERSECTED 1/4 LINE 8.58' SOUTH OF 1/4 COR.  
FOUND OLD STAKE AT COR. COR. VAR 5-05
- 1939 SUNNY VOL 3 PG 450 FD 1" PIPE 7" LOW, NOT IN  
BLACKTOP. 154.44 EAST OF NE COR SEC 5. REFERENCED SE  
COR SEC 32. USED A TEL. POLE, EL. POLE, & A 2" PIPE WHICH  
IS 47.5X NW OF THE CORNER. DRAWING INDICATES A  
POSSIBLE PIPE AT THE NE COR SEC 5.
- 1958 DOT I-90 #6405 SHEET 4.12 STATES NOTHING ABOUT THE  
MONUMENT. CALLS FOR THE NE COR SEC 5 AS 156.75 WEST  
OF THE SE COR SEC 32
- 1958 DOT I-90 #6566 SHEET 4.10 STATES NOTHING ABOUT THE  
MONUMENT. CALLS FOR THE NE COR SEC 5 AS 156.75 EAST  
OF THE SE COR SEC 32
- 1964 BATTERMAN VOL 4 PG 201 FD CUT STONE & REFERENCED  
156.75 EAST OF NE COR SEC 5. 2635.38 FROM S 1/4 COR  
SEC 32 TO SE COR SEC 32, & 2634.39 FROM S 1/4 COR SEC  
32 TO SW COR SEC 32. FD CUT STONE @ SW & S 1/4 COR SEC  
32. SW COR SEC 32 IS 165 EAST OF NW COR SEC 5 & 160.36  
EAST OF N 1/4 COR SEC 5.
- 1964 BATTERMAN VOL 4 PG 202 STATES NOTHING ABOUT MON @  
NE COR SEC 5. REFERENCED COR @ NE COR SEC 5. 2912.45  
TO SET PIPE @ E 1/4 COR SEC 5 WHICH IS 3.0 NORTH & 1.5  
EAST OF FD PIN, 2639.19 FROM NE TO N 1/4 COR SEC 5,  
2639.19 FROM N 1/4 COR SEC 5 TO NW COR SEC 5 WHICH IS  
165' WEST OF SW COR SEC 32. NOTE ON PAGE STATES RESET  
NORTH CORNERS IN SEC 5 FROM MONUMENTS IN SEC 32.
- 1968 SHIMEAL #12740 FROM PIPE @ N 1/4 COR SEC 5 N89-45W  
1319.70 TO PIPE & S0-25W 2944.70 FROM N 1/4 COR SEC 5  
TO PIPE @ CENTER OF SEC 5.
- 1973 LEE #4627 MON @ NW COR SEC 4 2641.68 TO N 1/4 COR  
SEC 4 & 2641.68 FROM N 1/4 COR SEC 4 TO NE COR SEC 4
- 1975 BICKEL FROM PIPE @ N 1/4 COR SEC 5 WEST 1413.90 (REC  
1397.64) TO FD PIPE
- 1986 BARNES Z-9 & FB #3 PG 28 & 44 FD PK & PLACED PK 3.00  
TO THE SOUTH & EAST. 18" DEEP FD CUT LIMESTONE.  
PLACED POLY MON ON TOP OF STONE. FD PK WAS TO FAR  
WEST BY 0.12'. FD REFERENCE PIPES AS SHOWN ON MAP.  
ALSO FD REFERENCE PIPES FOR NE COR SEC 5. N89-46-30W

SHEET 2 OF 4  
CORNER CODE A-9(1)

*D. Barnes*  
10/26/09

TU505 NECORSEC5

154.55 TO NE COR SEC 5. CALLS FOR FD PIPE 2.40 WEST OF NE COR SEC 5. CALLS FOR ELEV 828.9 & N/S COORDINATES OF 214,504.08; E/W 2,276,850.47. I PLACED POLY MON ON LINE WITH THE SE & S 1/4 CORNERS OF SEC 32 AND AT THE ORIGINAL GOVERNMENT JOG DISTANCE OF 154.44. FOUND A PIPE WHICH IS 2.40' WEST OF THE CORNER. BATTERMAN JR.'S JOG OF 156.75 IS IN HARMONY WITH LOCKE'S RECORDE DISTANCE BUT NOT THE ORIGINAL GOVERNMENT JOG DISTANCE.

1990 BARNES Z-9(1) FB#3 PG 60 FD POLY. & REFERENCED SAME. CALLS FOR MON 3' SOUTH OF E/W CENTER OF PVMT. & ON LINE WITH N/S PVMT.

1999 SAUSER GSM VOL 22 PG 256 SE COR SEC 32 FD BROKEN ALUM. MON., NE COR SEC 5 COMPUTED FROM COUNTY TIES- ON LINE WITH SOUTH & SE CORNERS OF SEC 32, S 1/4 COR SEC 32 COMPUTED FROM TIES. 154.50 FROM NE COR SEC 5 TO SE COR SEC 32. SURVEY OF ALLIANT UTILITIES. SET R/R SPIKE 25.50 EAST OF SE COR SEC 32. R/W 40.00. WIDTH OF GSM 274.50 ON SEC LINE & 300.04 ON R/W LINE.

2006 BARNES Z-9(2) RECOVERED POLY. PRIOR TO GRINDING & REFERENCED SAME. TOP OF MON. WAS BROKEN OFF. ACCEPTED FD POLY. MON. AFTER REPAVING I SET A DURANAIL IN THE PVMT SURFACE. POLY & L.S. IS UNDER PVMT SURFACE. REFERENCED SAME. CALLS FOR MON ON LINE WITH N/S PVMT. CENTER LINE & 2.2 SOUTH OF E/W PVMT CENTERLINE. POLY. MON IS IN HARMONY WITH REFERENCE MONUMENTS.

STIMULIAS MONEY FUNDED THE RESURFACING PROJECT, WHICH DID NOT DISTURB THE SE COR SEC 32. BATTERMAN COMPANY DUG 36" DEEP @ THE NE COR SEC 5. THEY FOUND THE DISOLVING ALUM. MON., BUT WAS NOT ABLE TO DETERMINE THE CENTER OF IT.

C) Was the corner restored through acceptance of (1) an obliterated evidence location, or, (2) a found perpetuated location?

ACCEPTED FD CUT LIMESTONE LOCATION @ THE SE COR SEC 32 AND THE DISOLVED ALUM @ THE NE COR SEC 5.

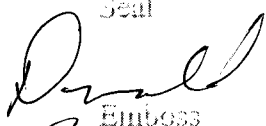
D) Describe any material discrepancy between the location of the corner as restored or reestablished and the location of that corner as previously restored or reestablished by distance and direction. Show the discrepancy on the plan view drawing under (a), above. Show the distances between the corner as previously restored or reestablished and (1) the corner as restored or reestablished, and (2) to at least 4 of the witness monuments shown on the drawing in (a), above.

DISCREPANCY @ NE COR SEC 5 TURTLE TWP IS SHOWN.

(E) Was the corner reestablished through lost corner proportionate methods? If so, show the method, including the directions and distances to other public land survey corners used as evidence or used for proportioning the corner location.

NONE

I, **Donald Barnes**, hereby certify that the corner location as identified by the corner code index was determined by me under my direction and control and that this U.S. Public Land Survey Monument Record is correct and complete to the best of my knowledge and belief.

Seal  
  
Emboss

SHEET 3 OF 4

Barnes

10/26/09

CORNER CODE A-9(1)

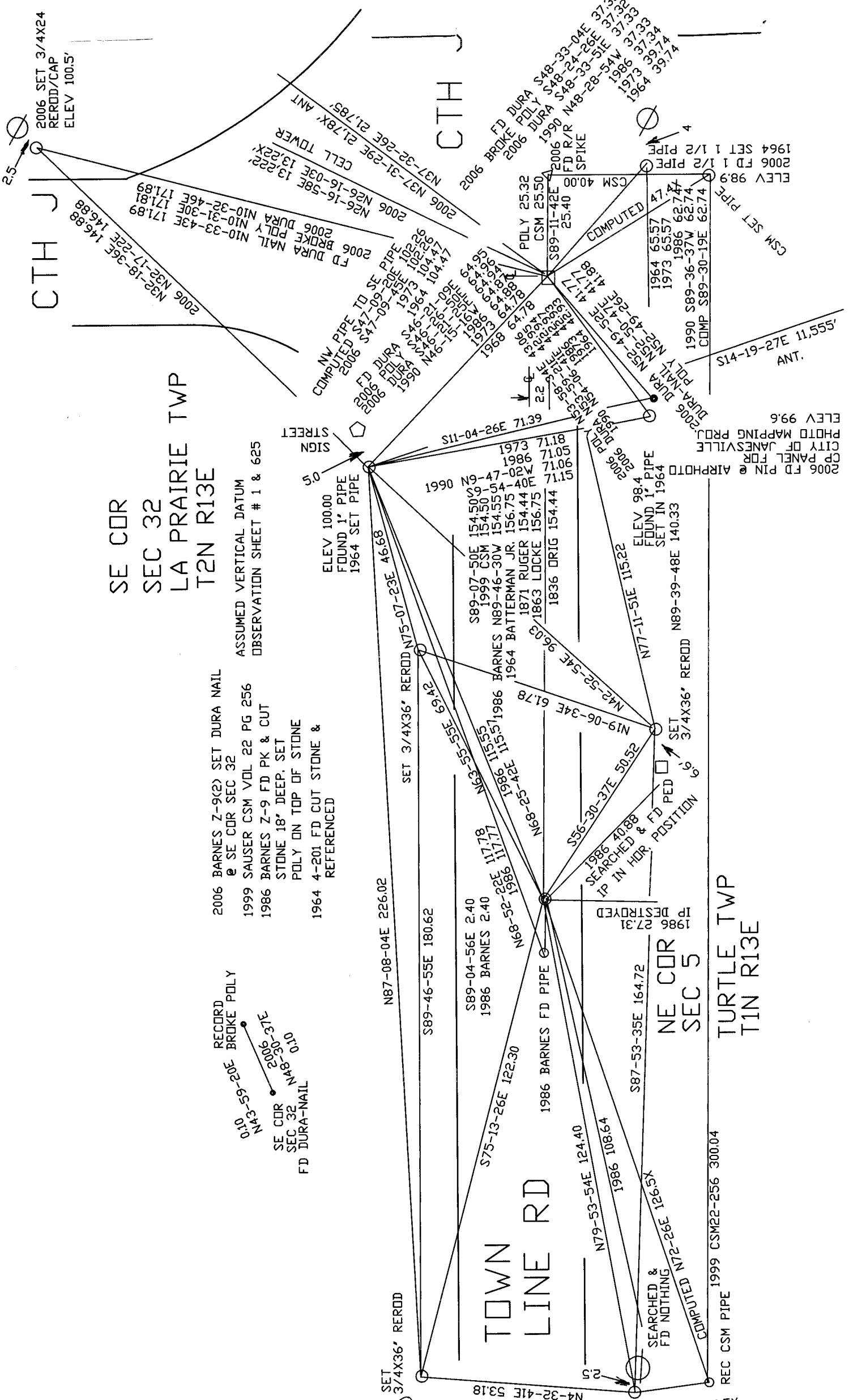
A.E. 7.08 REQUIREMENT

SE CDR  
SEC 32  
LA PRAIRIE TWP  
T2N R13E

2006 BARNES Z-9(2) SET DURA NAIL  
@ SE COR SEC 32  
1999 SAUSER CSM VOL 22 PG 256  
1986 BARNES Z-9 FD PK & CUT  
STONE 18' DEEP. SET  
POLY ON TOP OF STONE  
1964 4-201 FD CUT STONE &  
REFERENCED

ASSUMED VERTICAL DATUM  
OBSERVATION SHEET # 1 & 625

RECORD  
BROKE POLY  
N43-59-20E 0.10  
N48-30-37E 0.10  
SE CDR  
SEC 32  
FD DURA-NAIL



10/26/09  
D. D. D. D.  
Barnes

EMBOSSED SEAL

SET 3/4X36' REROD COMPUTED 16.5X  
N4-32-41E 53.18