

U.S. PUBLIC LAND SURVEY MONUMENT RECORD

For Public Land Survey Corners in:

WI ADMINISTRATIVE CODE A-E 7.08 REQUIREMENT

T. 1 N., R. 13 E

CORNER CODE INDEX

A	1	2	3	4	5	6	7	8	9	10	11	12	13	14	15	16	17	18	19	20	21	22	23	24	25
B																									
C	6																								
D																									
E																									
F																									
G	1																								
H																									
J																									
K																									
L	18																								
M																									
N																									
O																									
P	19																								
Q																									
R																									
S																									
T	30																								
U																									
V																									
W																									
X	31																								
Y																									
Z																									

TURTLE TWP
ROCK COUNTY WI

IF AVAILABLE
ROCK COUNTY COORDINATES REFERRED

North _____ Elev. _____

East _____

Hor. Datum _____ Vert. Datum _____

LATITUDE _____ ELLIPS. HT. _____

LONGITUDE _____

GPS (X) _____ TRAVERSE (X) _____

BASED ON THE FOLLOWING CONTROL:

PLACE MONUMENT SYMBOL AT PROPER LOCATION ON ABOVE INDEX

CORNER MONUMENT

WITNESS MONUMENT

(a)

BEARINGS ARE BASED ON:

FIELD BOOK _____ PAGE # _____

SHEET 1 OF 2

SHOW A PLAN VIEW DRAWING DEPICTING THE CORNER MONUMENT AND SURROUNDING PHYSICAL FEATURES, INCLUDING THE EXCAVATION AREA AND DEPTH.

PLANNING & ZONING COMMITTEE ADOPTED THE ABOVE FORM ON 12/2/1982

CORNER CODE V-19(2)

TU610

(B) Describe any record evidence, monument evidence, occupational evidence, testimonial evidence or any other material evidence you considered, and whether the monument was found or placed.

- 1836 O. LYON APRIL EAST BETWEEN SECTIONS 26 & 35
5306.4 INTERSECTED N & S LINE 21.12' NORTH OF POST
LAND ROLLING & 2ND RATE TIMBER BLACK WHITE &
BUR OAK, UNDER GROWTH SAME
WEST CORRECTED BETWEEN SECTIONS 26 & 35
2653.2 SET QUARTER SECTION POST {BUR OAK 9 S69 1/2 W
50.16' BUR OAK 8 N35W 44.88'
5306.4 SECTION CORNER.
- 1961 BATTERMAN VOL 4 PG 88 DUG HOLE 20X20X4' & FOUND
NOTHING. 2663.20 TO SW & SE CORNERS OF SEC 26. SET 1"
PIPE ON LINE & 1/2 WAY BETWEEN SEC. CORNERS
- 1964 SHIMEALL MAP #05013 FD PIPE
1967 LEE CSM VOL 1 PG 151 FD PIPE
1989 LEE CSM VOL 14 PG 108 FD PIPE S88-03-53E 250.00' TO A
POINT OPPOSITE A PROPERTY COR. THAT IS SOUTH 40.02 ON
THE R/W LINE. THAT COR IS S88-03-53E 250.00 OF THE NW
COR OF PROPERTY COR. N/S CENTER OF SECTION IS A
BEARING OF SOUTH.
- 1995 BARNES V-19 FOUND 1" PIPE. 2663.02 (REC 2663.20) TO SW
COR SEC 26 & 2662.68' (REC 2663.20) TO SE COR SEC 26.
N88-26-19W 2663.02 TO SW COR SEC 26 & S88-26-24E
2662.68 TO SE COR SEC 26
- 1998 HOUL CSM VOL 21 PG 288 FD PIPE. 5320.84 TO S 1/4 COR
SEC 35.
- 2003 WIDOT V-19(1) PROJECT 3663-00-21 SHEET 4.5. & MAP
#25269 & #25126 FD 1" PIPE
N/S=205,913.153; E/W 519,958.258
RECORD FILED BY BARNES. OCTOBER 31, 2003 ADJUSTMENT
= N/S 205,913.152 E/W 519,958.255

FD 1" PIPE & REFERENCED SAME.

AFTER PAVEMENT WAS PLACED, I MARKED LOCATION SO WIDOT
CONTRACT LANDSCAPERS COULD PUT DOT MON. IN. AUGUST 27,
2004 - CHECKED DOT DISK IN CONCRETE WITH 4 MAG NAIL STRING
TIES. CROSS ON MON IS IN CORRECT LOCATION. TIED IN 4
REFERENCE DISKS IN CONCRETE THAT THE CONTRACTORS PLACED.

C) Was the corner restored through acceptance of (1) an obliterated evidence location, or, (2) a found perpetuated location?


ACCEPTED FD PERPETUATED LOCATION

D) Describe any material discrepancy between the location of the corner as restored or reestablished and the location of that corner as previously restored or reestablished by distance and direction. Show the discrepancy on the plan view drawing under (a), above. Show the distances between the corner as previously restored or reestablished and (1) the corner as restored or reestablished, and (2) to at least 4 of the witness monuments shown on the drawing in (a), above.

I, **Donald Barnes**, hereby certify that the corner location as identified by the corner code index was determined by me under my direction and control and that this U.S. Public Land Survey Monument Record is correct and complete to the best of my knowledge and belief.

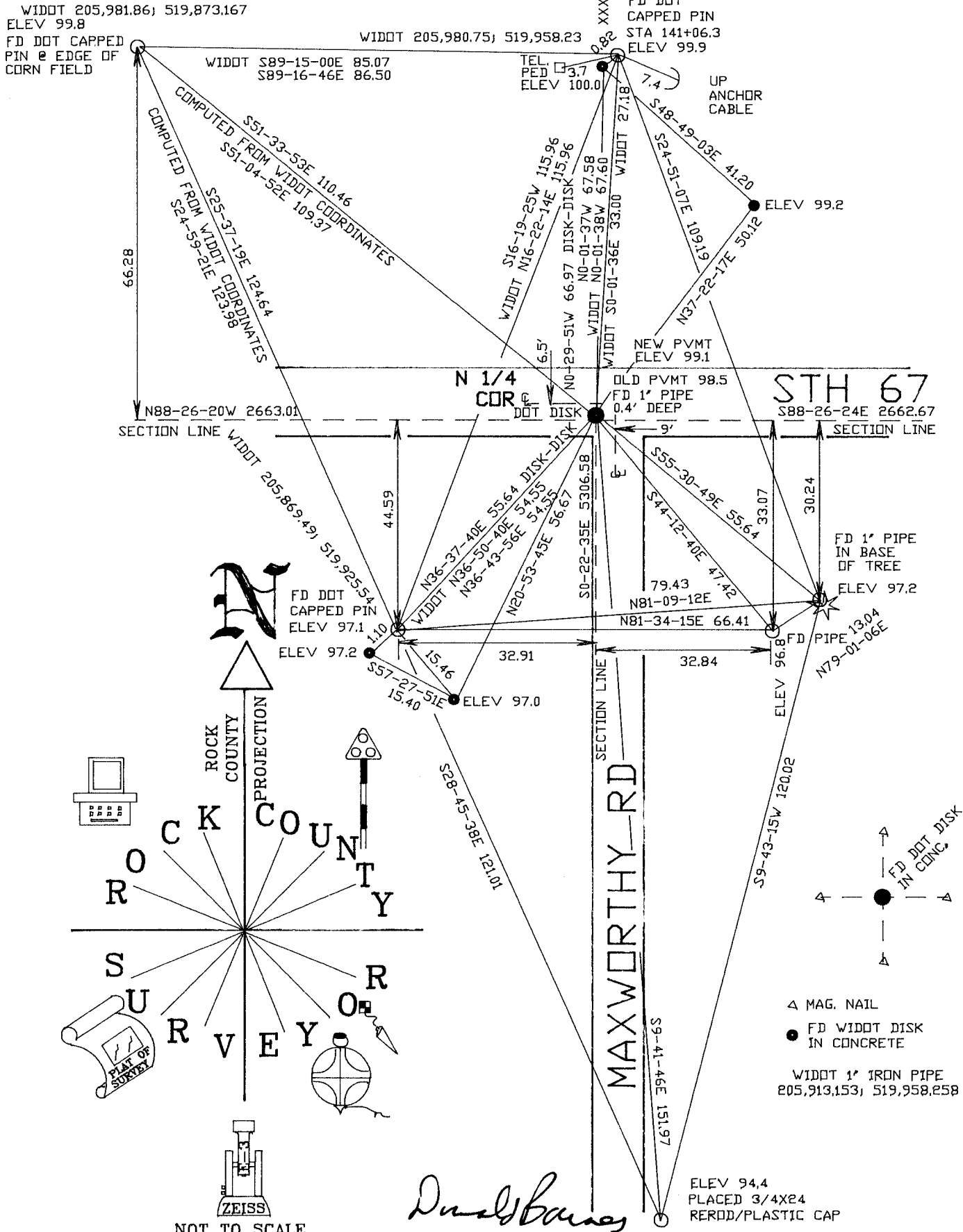
Seal

SHEET 1 OF 2

Emboss

8-30-04

CORNER CODE V-19(3)
A.E. 7.08 REQUIREMENT

N 1/4 COR
 SEC 35
 TURTLE TWP
 T1N R13E



ROCK COUNTY PROJECTION

ROCK COUNTY SURVEY

NOT TO SCALE
 OBSERVATION SHEET
 ASSUMED ELEVATION DATUM

ZEISS

Daniel Barnes
 8-30-04

EMBOSSED SEAL

V-19(3)