

Paper weight-110# (minimum)

Black nonfading ink required

U.S. PUBLIC LAND SURVEY MONUMENT RECORD

For Public Land Survey Corners In:
T. N. R. 13 E. 4th P.M.
CORNER CODE INDEX

WI ADMINISTRATIVE CODE A-E 7.08 REQUIREMENT
REV 10/23/2004 USMONREC.DWG

A	1	2	3	4	5	6	7	8	9	10	11	12	13	14	15	16	17	18	19	20	21	22	23	24	25	A
B		6			5					4					3					2					1	B
C																										C
D																										D
E																										E
F																										F
G																										G
H																										H
J																										J
K																										K
L																										L
M																										M
N																										N
O																										O
P																										P
Q																										Q
R																										R
S																										S
T																										T
U																										U
V																										V
W																										W
X																										X
Y																										Y
Z																										Z

TURTLE TWP
ROCK COUNTY WI

IF AVAILABLE
ROCK COUNTY COORDINATES PREFERRED

North _____ Elev. _____

East _____

Hor. Datum _____ Vert. Datum _____

LATITUDE _____ ELLIPS. HT. _____

LONGITUDE _____

NAD83(91) _____ NETWORK ADJ. YR _____

GPS (X) _____ TRAVERSE (X) _____

BASED ON THE FOLLOWING CONTROL:

PLACE MONUMENT SYMBOL AT PROPER LOCATION ON ABOVE INDEX

CORNER MONUMENT WITNESS MONUMENT

BEARINGS ARE BASED ON: -----

FIELD BOOK _____ PAGE # _____

SHEET 1 OF 4

SHOW A PLAN VIEW DRAWING DEPICTING THE CORNER MONUMENT AND SURROUNDING PHYSICAL FEATURES, INCLUDING THE EXCAVATION AREA AND DEPTH.

PLANNING & ZONING COMMITTEE ADOPTED THIS FORM ON 12/2/1982

CORNER CODE A-5(1)

TU503 NECORSEC6

(B) Describe any record evidence, monument evidence, occupational evidence, testimonial evidence or any other material evidence you considered, and whether the monument was found or placed.

- 1835 **BRINK NOV 23 WEST SOUTH SIDE SECTION 31 T2N R13E**
2640.00 **SET QUARTER SECTION POST IN PRAIRIE IN MOUND PIT EAST OF POST 3.96**
3795.00 **ARMY TRAIL C N.NE.**
5235.78 **INTERSECTED RANGE LINE NORTH OF TEMPORARY 6 MILE 447.48' SET POST AT INTERSECTION CORNER TOWNSHIPS 1 & 2 NORTH RANGES 12 & 13 EAST IN PRAIRIE IN MOUND 6 FEET SQUARE & FOUR FEET HIGH PIT SOUTH OF POST 9.24' LAND & SAME. NOV 23 1835**
- 1835 **BRINK NOV 23 WEST SOUTH SIDE SEC 32**
2640.00 **SET QUARTER SECTION POST IN PRAIRIE IN MOUND EAST OF POST 3.3'**
5280.00 **SET POST CORNERS SECTIONS 31 & 32 T2N R13E IN PRAIRIE IN MOUND PIT SOUTH OF POST 3.96' LAND DRY ROLLING PRAIRIE FIRST RATE ROSIN WEED PRAIRIE GRASS & C**
- 1836 **LYON** *NORTH BETWEEN SECTIONS 5 & 6 T1N R13E*
2640.00 **SET QUARTER SECTION POST & MADE MOUND OF EARTH & SOD.**
5587.56 **INTERSECTED NORTH BOUNDARY 163.68' WEST OF THE CORNER TO SECTIONS 31 & 32 & SET POST. CORNER TO SECTIONS 5 & 6 MADE MOUND OF EARTH & SODS LAND ROLLING PRAIRIE & FIRST RATE GROWTH SHORT GRASS & RED ROOT. MAY 2ND 1836**
- 1853 **MC VEAN VOL 1 PG 19 STATES NOTHING ABOUT MON. 5258.22 TO NE COR SEC 5. SUBDIVIDED SEC 5. PROBABLE 2629.11 TO N 1/4 COR SEC 5.**
- 1863 **LOCKE VOL 1 PG 178 SET BL O STAKE & SURROUNDED 3 HARDHEADS @ SE COR SEC 31. SE COR IS 165.0 EAST OF NE COR SEC 6. 2633.73 TO S 1/4 COR SEC 32, WHICH IS MID WAY & ON LINE WITH SE & SW CORNERS OF SEC 32. VAR 7-30 2644.95 [REC 2689.5 - PROBABLY IN ERROR] TO E 1/4 COR SEC 31, WHICH IS MIDWAY ON LINE WITH NE & SE CORNERS OF SEC 31. 5289.90 [REC 5379.0 - PROBABLY IN ERROR] TO NE COR SEC 31**
- 1865 **UNK #4653 SUBDIVIDED SEC 6. 2640.00 N 1/4 COR SEC 6 TO NE COR SEC 6, 2432.10 N 1/4 COR SEC 6 TO NW COR SEC 6, 3016.20 TO CENTER OF SEC 6, & 5655.21 TO S 1/4 COR SEC 6. SHOWS NE COR SEC 6 AS 163.68 WEST OF SE COR SEC 31.**
- 1871 **RUGER REMONUMENTATION PG 219 & 220.**
EAST ON SOUTH LINE OF SW 1/4 OF SEC 31 ON A VAR 5-10 AT
2590.17 **INTERSECTED 1/4 LINE AT 1/4 COR FOUND OLD STAKE A COR.**
EAST ON SOUTH LINE OF SE 1/4 OF SEC 31 ON A VAR 4-53 AT
2637.36 **INTERSECTED EAST BOUNDARY LINE 1.98' SOUTH OF COR FOUND STAKE SURROUNDED BY 3 HARD HEAD STONES AT COR. COR VAR 4-56.**
EAST ON SOUTH LINE OF SW 1/4 OF SEC 32 ON A VAR 5-10 AT
2634.39 **INTERSECTED 1/4 LINE 4.62' SOUTH OF 1/4 COR FD OLD STAKE AT COR. COR VAR 5-16**
EAST ON SOUTH LINE OF SE 1/4 OF SEC 32 ON A VAR 4-56 AT
2635.38 **INTERSECTED EAST BOUNDARY LINE 3.3' NORTH OF COR. FD LARGE HARD HEAD STONE AT COR. COR VAR 4-52**

Donald Baerz
7-23-2010

TU503

NECORSEC6

SOUTH ON EAST LINE OF NE 1/4 OF SEC 31 ON A VAR 6-25 AT

2642.97 INTERSECTED 1/4 LINE AT 1/4 COR FD OLD STAKE AT COR.

SOUTH ON EAST LINE OF SE 1/4 OF SEC 31 ON A VAR 6-30 AT

2648.58 INTERSECTED SOUTH BOUNDARY LINE 1.34' WEST OF COR. COR VAR 6-32, VAR4-16 2635.38 TO STONE MON @ S 1/4 COR SEC 31.

1881 HOLMES VOL 2 PG 338 STONE MON. VAR 5-30 2648.25 TO STONE MON @ E 1/4 COR SEC 31

1947 BATTERMAN #4640 STATES NOTHING ABOUT MON. 2639.2 TO R/R SPIKE @ N 1/4 COR SEC 5 & 5278.4 TO NE COR SEC 5.

1964 BATTERMAN VOL 4 PG 201 FD CUT STONE AT SE COR SEC 31 & REFERENCED SAME. 2634.39 TO LS @ S 1/4 COR SEC 32, 5269.77 TO CUT STONE @ SE COR SEC 32 .

1964 BATTERMAN VOL 4 PG 202 REFER NW COR SEC 5 BUT STATES NOTHING ABOUT IT. 165 WEST OF SE COR SEC 31. 2639.19 (REC 2640) TO N 1/4 COR SEC 5 & 5278.38

1975 BICKEL #04645 PIPE @ NW COR SEC 5 & @ N 1/4 COR SEC 5.

1977 KIENBAUM CSM 6-193 PK @ SW COR SEC 32 REF VOL 4 PG 201. USED FOR LINE IN SEC 32.

1983 COMBS CSM 11-349 FD PK @ SE COR SEC 31 & ALUM @ E 1/4 COR SEC 31.

1986 BARNES A-5 REFERENCED CORNER. 163.68 WEST OF SE COR SEC 31 T2N R13E. I PLACED A POLY MON AT THE ORIGINAL GOV. SURVEY JOG OF 163.78. CORNER IS 2' NORTH OF THE CENTER OF THE PAVEMENT. THE PIPE THAT BATTERMAN (1964) PLACED AS THE CORNER IS 1.23' WEST OF THE CORNER THAT I PLACED.

1986 BARNES Z-5 @ SE COR SEC 31 FD PK & 20" DEEP FD CUT LIMESTONE. PLACED POLY MON ON TOP OF STONE. REFERENCED SAME. FD RECORD NE REFERENCE PIPE. 163.68 EAST OF NE COR SEC 6. S 1/4 COR SEC 31 ELEV 812.3. 214,507.20; 2,271,580.02

1992 COMBS CSM 16-044 FD POLY @ SW COR SEC 32. 2650.19 TO ALUM @ W 1/4 COR SEC 32.

@ NE COR SEC 6 FD POLY WITH TOP BROKE OFF & POLY @ S 1/4 COR SEC 31. ALSO FD PIPE 1.36 WEST OF POLY @ N 1/4 COR SEC 6. AFTER PAVING PROJECT PLACED "SURVEY MARKER" SPIKES AT S 1/4 COR & N 1/4 COR.

C) Was the corner restored through acceptance of (1) an obliterated evidence location, or, (2) a found perpetuated location?

I ACCEPTED THE ALUM MON BECAUSE IT IS IN HARMONY WITH THE ORIGINAL GOV., RUGER'S REMON. DISTANCE, AND THE 1865 UNK SURVEYOR'S DISTANCES.

D) Describe any material discrepancy between the location of the corner as restored or reestablished and the location of that corner as previously restored or reestablished by distance and direction. Show the discrepancy on the plan view drawing under (a), above. Show the distances between the corner as previously restored or reestablished and (1) the corner as restored or reestablished, and (2) to at least 4 of the witness monuments shown on the drawing in (a), above.

THE FD PIPE SET BY BATTERMAN IN 1964. THIS JOG DISTANCE IS IN HARMONY WITH LOCKE'S 1863 DISTANCE BUT THE JOG DISTANCE TO THE ALUM MON IS IN HARMONY WITH THE ORIGINAL GOV. DISTANCE, THE 1865 UNK DISTANCE, RUGER'S REMON. DISTANCE. THE PIPE IS N88-02-55W 1.36 FROM THE ALUM. MON.

I, Donald Barnes, hereby certify that the corner location as identified by the corner code index was determined by me under my direction and control and that this U.S. Public Land Survey Monument Record is correct and complete to the best of my knowledge and belief.

Seal
Emboss
Donald Barnes
7-23-2010

SHEET 2 OF 4

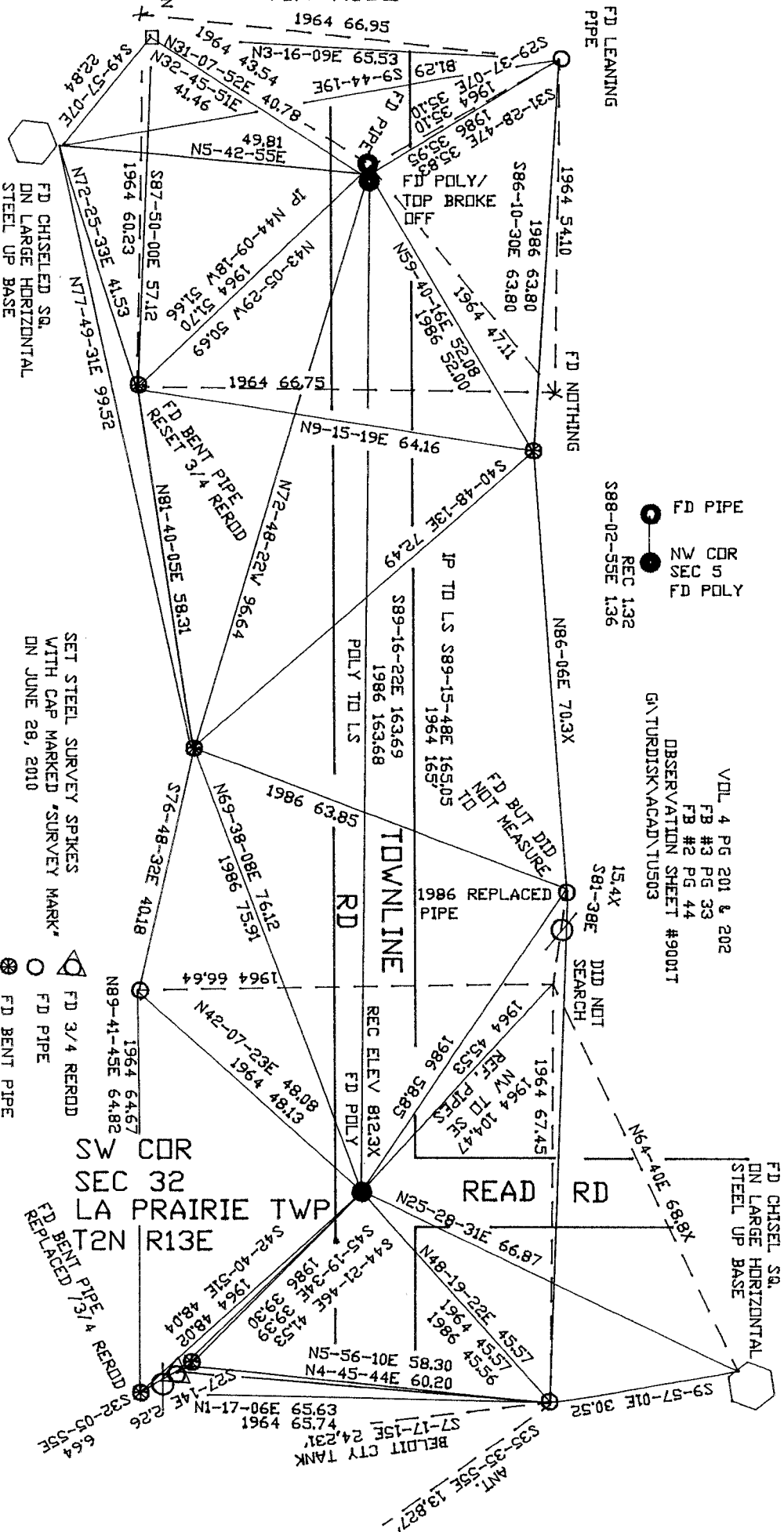
CORNER CODE A-5(1)

Plans
 7-23/

SEARCHED & FD NO
 PIPE BUT
 FD 35X35 CONC MON
 /TOP EVENLY
 BROKE OFF

NW COR
 SEC 5
 TURTLE TWP
 T1N R13E

SHEET 3 OF 4



● FD PIPE
 ● NW COR SEC 5
 ● FD POLY

VDL 4 PG 201 & 202
 FB #3 PG 33
 FB #2 PG 44
 OBSERVATION SHEET #90017
 G:\TURDISK\ACAD\TUS03

SET STEEL SURVEY SPIKES
 WITH CAP MARKED 'SURVEY MARK'
 ON JUNE 28, 2010

○ FD 3/4 REROD
 ○ FD PIPE
 ⊗ FD BENT PIPE

SW COR
 SEC 32
 LA PRAIRIE TWP
 T2N R13E

3 OF 4

Plans

7-23-2010

LA PRAIRIE TWP T2N R13E		TURTLE TWP T1N R13E	
<p>1835 BRINK 1579578 1871 RUGER REMON 1576476 200 BARNES 1576313 SV COR SEC 31 TO SE COR SEC 33</p> <p>1835 BRINK 1579578 1871 RUGER REMON 1576476 200 BARNES 1576313 SV COR SEC 31 TO SE COR SEC 33</p>	<p>1835 BRINK 1579578 1871 RUGER REMON 1576476 200 BARNES 1576313 SV COR SEC 31 TO SE COR SEC 33</p> <p>1835 BRINK 1579578 1871 RUGER REMON 1576476 200 BARNES 1576313 SV COR SEC 31 TO SE COR SEC 33</p>	<p>1835 BRINK 1579578 1871 RUGER REMON 1576476 200 BARNES 1576313 SV COR SEC 31 TO SE COR SEC 33</p> <p>1835 BRINK 1579578 1871 RUGER REMON 1576476 200 BARNES 1576313 SV COR SEC 31 TO SE COR SEC 33</p>	<p>1835 BRINK 1579578 1871 RUGER REMON 1576476 200 BARNES 1576313 SV COR SEC 31 TO SE COR SEC 33</p> <p>1835 BRINK 1579578 1871 RUGER REMON 1576476 200 BARNES 1576313 SV COR SEC 31 TO SE COR SEC 33</p>
<p>1835 BRINK 1579578 1871 RUGER REMON 1576476 200 BARNES 1576313 SV COR SEC 31 TO SE COR SEC 33</p>	<p>1835 BRINK 1579578 1871 RUGER REMON 1576476 200 BARNES 1576313 SV COR SEC 31 TO SE COR SEC 33</p>	<p>1835 BRINK 1579578 1871 RUGER REMON 1576476 200 BARNES 1576313 SV COR SEC 31 TO SE COR SEC 33</p>	<p>1835 BRINK 1579578 1871 RUGER REMON 1576476 200 BARNES 1576313 SV COR SEC 31 TO SE COR SEC 33</p>
<p>1835 BRINK 1579578 1871 RUGER REMON 1576476 200 BARNES 1576313 SV COR SEC 31 TO SE COR SEC 33</p>	<p>1835 BRINK 1579578 1871 RUGER REMON 1576476 200 BARNES 1576313 SV COR SEC 31 TO SE COR SEC 33</p>	<p>1835 BRINK 1579578 1871 RUGER REMON 1576476 200 BARNES 1576313 SV COR SEC 31 TO SE COR SEC 33</p>	<p>1835 BRINK 1579578 1871 RUGER REMON 1576476 200 BARNES 1576313 SV COR SEC 31 TO SE COR SEC 33</p>

LA PRAIRIE TWP
T2N R13E

TURTLE TWP
T1N R13E

COGO FILE GATURDISK/SOFTSURVATIES
FILE TUS03

1865 UNK #4653 3087.48
1995 BARNES 50-11-06R 3085.89
50-11-10R 3085.89
IP-POLY 589-27-28E 5063.51
1865 UNK #4653 5072.1

1865 UNK #4653 2623.26
1865 UNK #66-08-53E 6651.07

1865 UNK #4653 2623.26
1865 UNK #66-08-53E 6651.07

1865 UNK #4653 2623.26
1865 UNK #66-08-53E 6651.07

1865 UNK #4653 2623.26
1865 UNK #66-08-53E 6651.07

1865 UNK #4653 2623.26
1865 UNK #66-08-53E 6651.07

1865 UNK #4653 2623.26
1865 UNK #66-08-53E 6651.07

1865 UNK #4653 2623.26
1865 UNK #66-08-53E 6651.07

1865 UNK #4653 2623.26
1865 UNK #66-08-53E 6651.07

1865 UNK #4653 2623.26
1865 UNK #66-08-53E 6651.07

1865 UNK #4653 2623.26
1865 UNK #66-08-53E 6651.07

1865 UNK #4653 2623.26
1865 UNK #66-08-53E 6651.07

1865 UNK #4653 2623.26
1865 UNK #66-08-53E 6651.07

1865 UNK #4653 2623.26
1865 UNK #66-08-53E 6651.07

1865 UNK #4653 2623.26
1865 UNK #66-08-53E 6651.07

1865 UNK #4653 2623.26
1865 UNK #66-08-53E 6651.07

David Bann
7-23-2010