

U.S. PUBLIC LAND SURVEY MONUMENT RECORD

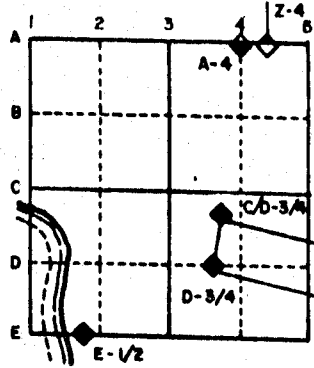
For Public Land Survey Corners in the
T. 2 N., R. 11 E.

CORNER CODE INDEX

	1	2	3	4	5	6	7	8	9	10	11	12	13	14	15	16	17	18	19	20	21	22	23	24	25
A																									
B																									
C		6																							
D			5																						
E				4																					
F					3																				
G																									
H																									
I																									
J																									
K																									
L																									
M																									
N																									
O																									
P																									
Q																									
R																									
S																									
T																									
U																									
V																									
W																									
X																									
Y																									
Z																									

PLACE MONUMENT SYMBOL (◆) AT PROPER LOCATION ON ABOVE INDEX

EXAMPLE



PLYMOUTH TWP
ROCK COUNTY WI

IF AVAILABLE STATE PLANE COORDINATES

North (Y) _____ Eleve. (Z) _____
 East (X) _____ Zone _____
 Hor. Datum _____ Vert. Datum _____

(a.)

◆ CORNER MONUMENT

○ WITNESS MONUMENT

BEARINGS ARE BASED ON:

1 OF 2

MICROFILMED

FIELD BOOK _____ PAGE # _____

SHOW A PLAN VIEW DRAWING DEPICTING THE CORNER MONUMENT AND SURROUNDING PHYSICAL FEATURES, INCLUDING THE EXCAVATION AREA AND DEPTH. THE CORNER MONUMENT SHALL HAVE THE FOLLOWING CHARACTERISTICS: 1) HAVE AT LEAST TWO PREDETERMINED BREAK-OFF POINTS. 2) IF BROKEN, LEAVE A PERMANENTLY MAGNETIZED REMNANT AT THE ORIGINAL POINT. 3) MUST BE EXTENDABLE. 4) THE CAP IS INSCRIBED: ROCK COUNTY SURVEY MONUMENT - PENALTY FOR DISTURBING MARKER. 5) OR AN EXISTING CUT LIMESTONE. AN IRON PIPE 1 1/2" x 4'0" (MINIMUM) MAY BE USED IN AREAS WHERE GROUND WATER IS WITHIN ONE FOOT OF THE SURFACE. IF THE CORNER IS OCCUPIED BY AN IMPROVEMENT (MANHOLE, BURIED CABLE, ETC.) ANY DURABLE, DISTINCT MONUMENT MAY BE USED. CORNERS SHALL BE REFERENCED WITH AT LEAST 4 DURABLE WITNESS MONUMENTS. WITNESS MONUMENTS SHALL BE MADE OF CONCRETE, NATURAL STONE, IRON OR OTHER EQUALLY DURABLE MATERIAL, EXCEPT WOOD. DESCRIBE THE CORNER AND THE WITNESS MONUMENTS.

CORNER CODE:

A 15 (2)

(a) Describe any record evidence, monument evidence, occupational evidence, testimonial evidence or any other material evidence you considered, and whether the monument was found or placed.

1855 CHURCH VOL 1 PG 39 USED CORNER TO SUBDIVIDE SECTION 3.

1866 LOCKE REMONUMENTATION FIELD NOTES AT THE SOUTH QUARTER CORNER OF SECTION 34 FOUND OLD STAKE IN CENTER OF HIGHWAY AND IN LINE OF FENCES RUNNING NORTH AND SOUTH. AT NORTH QUARTER CORNER OF SECTION 3 SET CORNER 13.20' EAST OF QUARTER CORNER FOR TOWN 3. THE SECTION CORNER WEST BEING LAST. PLACED CUT LIMESTONE. NOTES SHOW A DISTANCE OF 2645.28 TO THE NORTHWEST CORNER AND 2654.88 TO THE NORTHEAST CORNER.

1886 RUGER VOL 2 PG 272 USED CORNER TO SUBDIVIDE SECTION 3.

1933 SUNNY VOL 3 PG 235 SET 1" X 35" PIPE IN CONCRETE PAVEMENT 0.4' NORTH OF CENTER OF SAME. MAP SHOWS THAT THE SOUTH QUARTER CORNER OF SECTION 34 IS 13.20' WEST. SHOWS A DISTANCE OF 2645.4' TO THE NW CORNER AND 2653.6 TO THE NORTH EAST CORNER.

1970 BATTERMAN VOL 4 PG 484 SHOWS CORNER REFERENCED.

1992 BARNES FOUND REROD AT ROAD SURFACE. 6" DEEP FOUND PIPE IN CONCRETE PAVEMENT. 34" DEEP FOUND CUT LIMESTONE. PLACED MAGNET ON TOP OF STONE.

FOUND DOT DISK.

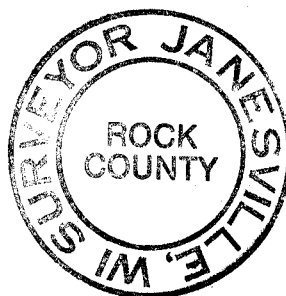
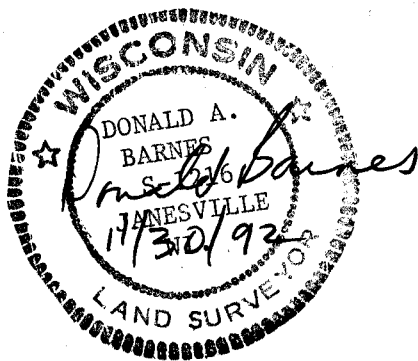
(C) Was the corner restored through acceptance of (1) an obliterated evidence location, or, (2) a found perpetuated location?

ACCEPTED FOUND CUT LIMESTONE. DID NOT ACCEPT DOT DISK. DISK IS .06' NORTH AND .04' EAST OF THE CORRECT POSITION.

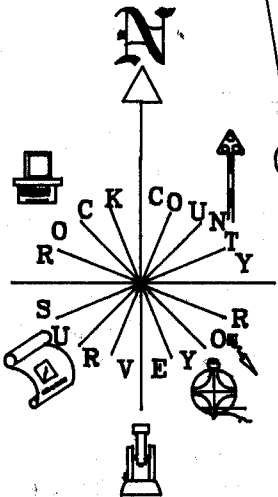
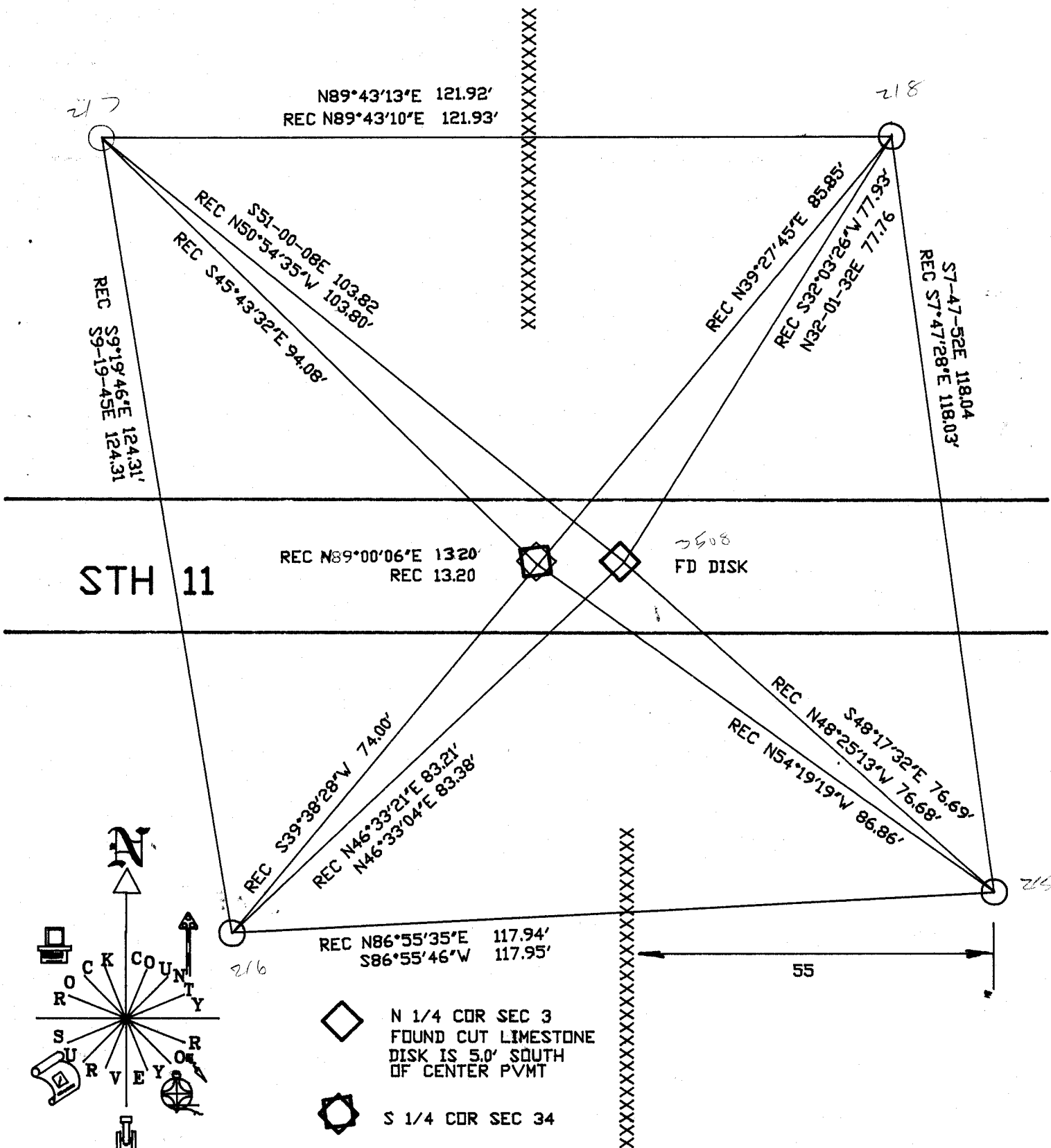
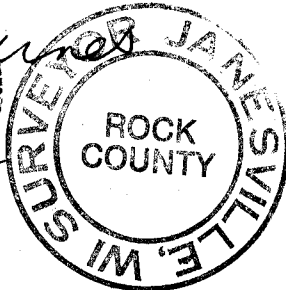
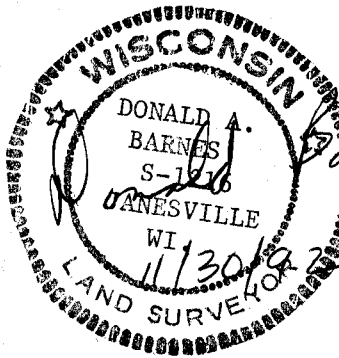
(d) Describe any material discrepancy between the location of the corner as restored or reestablished and the location of that corner as previously restored or reestablished by distance and direction. Show the discrepancy on the plan view drawing under (a), and (1) the corner as restored or reestablished, and (2) to at least 4 of the witness monuments shown on the drawing in (a), above.

SEE MAP FOR DISCREPANCY.

I, Donald Barnes, hereby certify that the corner points as identified by the corner code index were, in a field survey on November 9, 1992, established, re-established, monumented, re-monumented, recovered or restored as expressed below and in conformance with the instructions of the United States Department of Interior, Bureau of Land Management.



A 15(2)



◊ N 1/4 COR SEC 3
 FOUND CUT LIMESTONE
 DISK IS 5.0' SOUTH
 OF CENTER PVMT
 ⊠ S 1/4 COR SEC 34

A 15(2)