

Paper weight-110# (minimum)

Black nonfading ink required

U.S. PUBLIC LAND SURVEY MONUMENT RECORD

For Public Land Survey Corners In:
T. 2N. R. 13E. 4th P.M.
CORNER CODE INDEX

WI ADMINISTRATIVE CODE A-E 7.08 REQUIREMENT
REV 10/23/2004 USMONREC.DWG

	1	2	3	4	5	6	7	8	9	10	11	12	13	14	15	16	17	18	19	20	21	22	23	24	25	
A																										A
B																										B
C																										C
D																										D
E																										E
F																										F
G																										G
H																										H
J																										J
K																										K
L																										L
M																										M
N																										N
O																										O
P																										P
Q																										Q
R																										R
S																										S
T																										T
U																										U
V																										V
W																										W
X																										X
Y																										Y
Z																										Z

La Prairie TWP
ROCK COUNTY WI

IF AVAILABLE
ROCK COUNTY COORDINATES PREFERRED

North _____ Elev. _____

East _____

Hor. Datum _____ Vert. Datum _____

LATITUDE _____ ELLIPS. HT. _____

LONGITUDE _____

NAD83(91) _____ NETWORK ADJ. YR _____

GPS (X) _____ TRAVERSE (X) _____

BASED ON THE FOLLOWING CONTROL:

◆ CORNER MONUMENT ○ WITNESS MONUMENT

BEARINGS ARE BASED ON: _____

FIELD BOOK _____ PAGE # _____

SHEET 1 OF 4

SHOW A PLAN VIEW DRAWING DEPICTING THE CORNER MONUMENT AND SURROUNDING PHYSICAL FEATURES, INCLUDING THE EXCAVATION AREA AND DEPTH.

PLANNING & ZONING COMMITTEE ADOPTED THIS FORM ON 12/2/1982

CORNER CODE 25(1)

LA623 SE CORSEC31

(B) Describe any record evidence, monument evidence, occupational evidence, testimonial evidence or any other material evidence you considered, and whether the monument was found or placed.

- 1835 BRINK NOV 23 WEST SOUTH SIDE SECTION 31 T2N R13E
2640.00 SET QUARTER SECTION POST IN PRAIRIE IN
MOUND PIT EAST OF POST 3.96
3795.00 ARMY TRAIL C N.NE.
5235.78 INTERSECTED RANGE LINE NORTH OF
TEMPORARY 6 MILE 447.48' SET POST AT
INTERSECTION CORNER TOWNSHIPS 1 & 2
NORTH RANGES 12 & 13 EAST IN PRAIRIE IN
MOUND 6 FEET SQUARE & FOUR FEET HIGH PIT
SOUTH OF POST 9.24' LAND & SAME. NOV 23
1835
- 1835 BRINK NOV 23 WEST SOUTH SIDE SEC 32
2640.00 SET QUARTER SECTION POST IN PRAIRIE IN
MOUND EAST OF POST 3.3'
5280.00 SET POST CORNERS SECTIONS 31 & 32 T2N R13E
IN PRAIRIE IN MOUND PIT SOUTH OF POST 3.96'
LAND DRY ROLLING PRAIRIE FIRST RATE ROSIN
WEED PRAIRIE GRASS & C
- 1836 LYON NORTH BETWEEN SECTIONS 5 & 6 T1N R13E
2640.00 SET QUARTER SECTION POST & MADE MOUND OF
EARTH & SOD.
5587.56 INTERSECTED NORTH BOUNDARY 163.68' WEST
OF THE CORNER TO SECTIONS 31 & 32 & SET
POST. CORNER TO SECTIONS 5 & 6 MADE MOUND
OF EARTH & SODS LAND ROLLING PRAIRIE &
FIRST RATE GROWTH SHORT GRASS & RED ROOT.
MAY 2ND 1836
- 1853 MC VEAN VOL 1 PG 19 STATES NOTHING ABOUT N 1/4 COR
MON. 5258.22 TO NE COR SEC 5. SUBDIVIDED SEC 5.
PROBABLE 2629.11 TO N 1/4 COR SEC 5.
- 1863 LOCKE VOL 1 PG 178 SET BL O STAKE & SURROUNDED 3
HARDHEADS @ SE COR SEC 31. SE COR IS 165.0 EAST OF
NE COR SEC 6. 2633.73 TO S 1/4 COR SEC 32, WHICH IS
MID WAY & ON LINE WITH SE & SW CORNERS OF SEC 32. VAR
7-30 2644.95 [REC 2689.5 - PROBABLY IN ERROR] TO E 1/4
COR SEC 31, WHICH IS MIDWAY ON LINE WITH NE & SE
CORNERS OF SEC 31. 5289.90 [REC 5379.0 - PROBABLY IN
ERROR] TO NE COR SEC 31
- 1865 UNK #4653 SUBDIVIDED SEC 6. 2640.00 N 1/4 COR SEC 6
TO NE COR SEC 6, 2432.10 N 1/4 COR SEC 6 TO NW COR
SEC 6, 3016.20 TO CENTER OF SEC 6, & 5655.21 TO S 1/4
COR SEC 6. SHOWS NE COR SEC 6 AS 163.68 WEST OF SE
COR SEC 31.
- 1871 RUGER REMONUMENTATION PG 219 & 220.
EAST ON SOUTH LINE OF SW 1/4 OF SEC 31 ON
A VAR 5-10 AT
2590.17 INTERSECTED 1/4 LINE AT 1/4 COR FOUND OLD
STAKE A COR.
EAST ON SOUTH LINE OF SE 1/4 OF SEC 31 ON
A VAR 4-53 AT
2637.36 INTERSECTED EAST BOUNDARY LINE 1.98' SOUTH
OF COR FOUND STAKE SURROUNDED BY 3 HARD
HEAD STONES AT COR. COR VAR 4-56.
EAST ON SOUTH LINE OF SW 1/4 OF SEC 32 ON
A VAR 5-10 AT
2634.39 INTERSECTED 1/4 LINE 4.62' SOUTH OF 1/4 COR
FD OLD STAKE AT COR. COR VAR 5-16
EAST ON SOUTH LINE OF SE 1/4 OF SEC 32 ON
A VAR 4-56 AT
2635.38 INTERSECTED EAST BOUNDARY LINE 3.3' NORTH
OF COR. FD LARGE HARD HEAD STONE AT COR.
COR VAR 4-52

Donald Barnes
7/23/2010

LA623

SE CORSEC31

SOUTH ON EAST LINE OF NE 1/4 OF SEC 31 ON A VAR 6-25 AT

2642.97 INTERSECTED 1/4 LINE AT 1/4 COR FD OLD STAKE AT COR.

SOUTH ON EAST LINE OF SE 1/4 OF SEC 31 ON A VAR 6-30 AT

2648.58 INTERSECTED SOUTH BOUNDARY LINE 1.34' WEST OF COR. COR VAR 6-32, VAR4-16 2635.38 TO STONE MON @ S 1/4 COR SEC 31.

1881 HOLMES VOL 2 PG 338 STONE MON. VAR 5-30 2648.25 TO STONE MON @ E 1/4 COR SEC 31

1947 BATTERMAN #4640 STATES NOTHING ABOUT MON. 2639.2 TO R/R SPIKE @ N 1/4 COR SEC 5 & 5278.4 TO NE COR SEC 5.

1964 BATTERMAN VOL 4 PG 201 FD CUT STONE AT SE COR SEC 31 & REFERENCED SAME. 2634.39 TO LS @ S 1/4 COR SEC 32, 5269.77 TO CUT STONE @ SE COR SEC 32 .

1964 BATTERMAN VOL 4 PG 202 REFER NW COR SEC 5 BUT STATES NOTHING ABOUT IT. 165 WEST OF SE COR SEC 31. 2639.19 (REC 2640) TO N 1/4 COR SEC 5 & 5278.38

1975 BICKEL #04645 PIPE @ NW COR SEC 5 & @ N 1/4 COR SEC 5.

1977 KIENBAUM GCM 6-193 PK @ SW COR SEC 32 REF VOL 4 PG 201. USED FOR LINE IN SEC 32.

1983 COMBS GCM 11-349 FD PK @ SE COR SEC 31 & ALUM @ E 1/4 COR SEC 31.

1986 BARNES A-5 REFERENCED CORNER. 163.68 WEST OF SE COR SEC 31 T2N R13E. I PLACED A POLY MON AT THE ORIGINAL GOV. SURVEY JOB OF 163.78. CORNER IS 2' NORTH OF THE CENTER OF THE PAVEMENT. THE PIPE THAT BATTERMAN (1964) PLACED AS THE CORNER IS 1.23' WEST OF THE CORNER THAT I PLACED.

1986 BARNES Z-5 @ SE COR SEC 31 FD PK & 20" DEEP FD CUT LIMESTONE. PLACED POLY MON ON TOP OF STONE. REFERENCED SAME. FD RECORD NE REFERENCE PIPE. 163.68 EAST OF NE COR SEC 6. S 1/4 COR SEC 31 ELEV 812.3. 214,507.20; 2,271,580.02

1992 COMBS GCM 16-044 FD POLY @ SW COR SEC 32. 2650.19 TO ALUM @ W 1/4 COR SEC 32.

@ NE COR SEC 6 FD POLY WITH TOP BROKE OFF & POLY @ S 1/4 COR SEC 31. ALSO FD PIPE 1.36 WEST OF POLY @ N 1/4 COR SEC 6. AFTER PAVING PROJECT PLACED "SURVEY MARKER" SPIKES AT S 1/4 COR & N 1/4 COR.

C) Was the corner restored through acceptance of (1) an obliterated evidence location, or, (2) a found perpetuated location?

I ACCEPTED THE POLY MON WHICH OVER CUT L.S.

D) Describe any material discrepancy between the location of the corner as restored or reestablished and the location of that corner as previously restored or reestablished by distance and direction. Show the discrepancy on the plan view drawing under (a), above. Show the distances between the corner as previously restored or reestablished and (1) the corner as restored or reestablished, and (2) to at least 4 of the witness monuments shown on the drawing in (a), above.

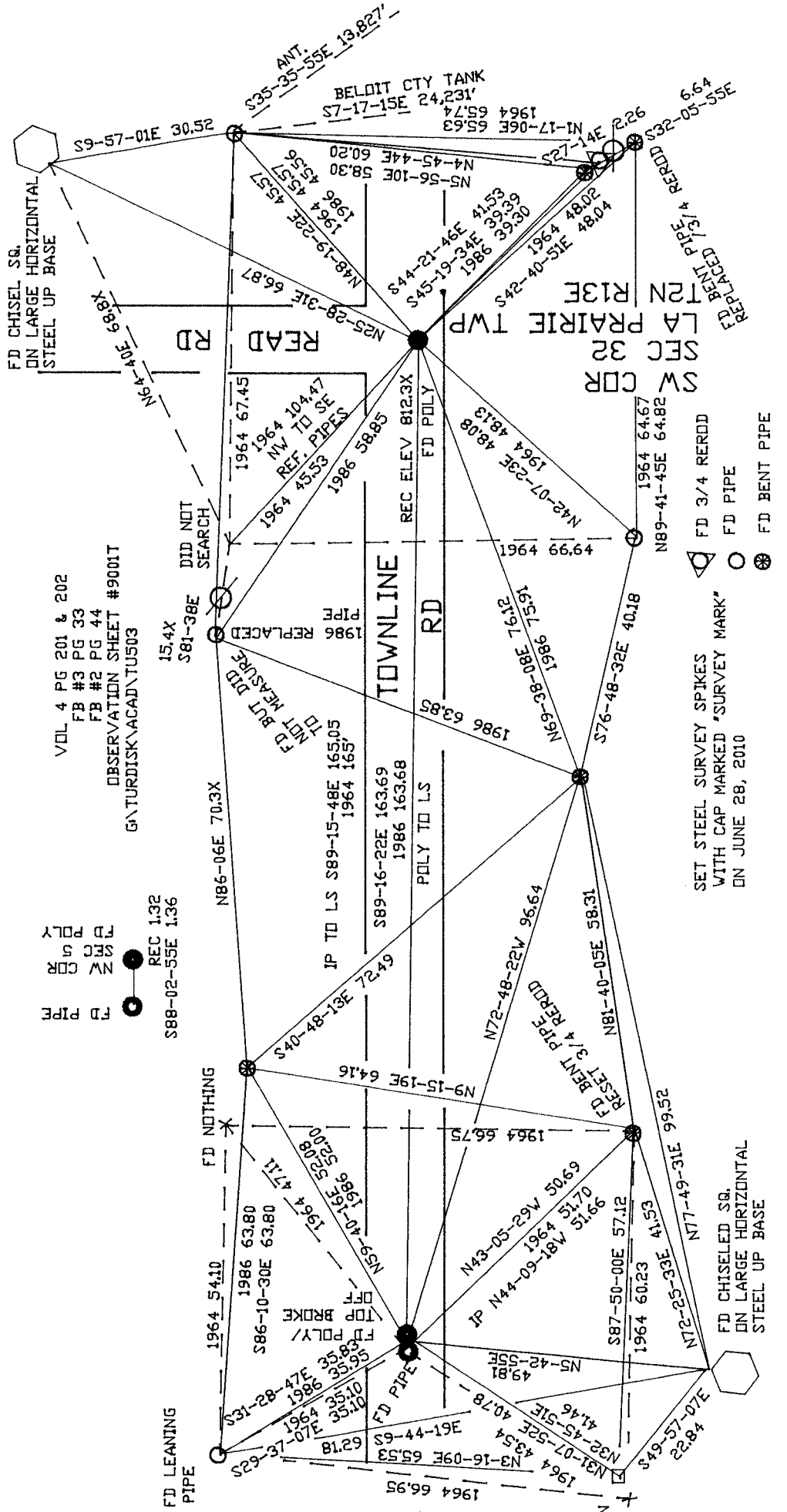
I, Donald Barnes, hereby certify that the corner location as identified by the corner code index was determined by me under my direction and control and that this U.S. Public Land Survey Monument Record is correct and complete to the best of my knowledge and belief.

Seal
Emboss

SHEET 2 OF 4

CORNER CODE Z-5(1)

Donald Barnes
7/23/2010



VOL 4 PG 201 & 202
 FB #3 PG 33
 FB #2 PG 44
 OBSERVATION SHEET #9001T
 G:\TURDISK\ACAD\TUS03

FD PIPE
 NW COR
 SEC 5
 REC 1.32
 S88-02-55E 1.36

15.4X
 S81-38E
 DID NOT SEARCH

FD NOTHING
 1964 54.10
 1986 63.80
 S86-10-30E 63.80

TIN R13E
 TURTLE TWP
 SEC 5
 NW COR
 SHEET 3 OF 4

SEARCHED & FD NO
 PIPE BUT
 FD 3.5X3.5 CONC MAIN
 /TOP EVENLY
 BROKE OFF

SET STEEL SURVEY SPIKES
 WITH CAP MARKED "SURVEY MARK"
 ON JUNE 28, 2010

FD 3/4 REROD
 FD PIPE
 FD BENT PIPE

7-23/2010

EMBOSSSED SEAL

(1) 5

