

# U.S. PUBLIC LAND SURVEY MONUMENT RECORD

For Public Land Survey Corners in:

WI ADMINISTRATIVE CODE A-E 7.08 REQUIREMENT

T. 1 N., R. 11 E

### CORNER CODE INDEX

A	1	2	3	4	5	6	7	8	9	10	11	12	13	14	15	16	17	18	19	20	21	22	23	24	25
B	6																								
C		5																							
D			4																						
E				3																					
F					2																				
G						1																			
H							8																		
I								9																	
J									10																
K										11															
L											12														
M												13													
N													14												
O														15											
P															16										
Q																17									
R																	18								
S																		19							
T																			20						
U																				21					
V																					22				
W																						23			
X																							24		
Y																								25	
Z																									

NEWARK TWP  
ROCK COUNTY WI

IF AVAILABLE  
ROCK COUNTY COORDINATES PREFERRED

North \_\_\_\_\_ Elev. \_\_\_\_\_

East \_\_\_\_\_

Hor. Datum \_\_\_\_\_ Vert. Datum \_\_\_\_\_

LATITUDE \_\_\_\_\_ ELLIPS. HT. \_\_\_\_\_

LONGITUDE \_\_\_\_\_

GPS (X) \_\_\_\_\_ TRAVERSE (X) \_\_\_\_\_

BASED ON THE FOLLOWING CONTROL:

PLACE MONUMENT SYMBOL  AT PROPER LOCATION ON ABOVE INDEX

CORNER MONUMENT

WITNESS MONUMENT

(a)

BEARINGS ARE BASED ON:

FIELD BOOK \_\_\_\_\_ PAGE # \_\_\_\_\_

SHEET 1 OF 5

SHOW A PLAN VIEW DRAWING DEPICTING THE CORNER MONUMENT AND SURROUNDING PHYSICAL FEATURES, INCLUDING THE EXCAVATION AREA AND DEPTH.

PLANNING & ZONING COMMITTEE ADOPTED THE ABOVE FORM ON 12/2/1982

CORNER CODE V-7(1)

NE604

(B) Describe any record evidence, monument evidence, occupational evidence, testimonial evidence or any other material evidence you considered, and whether the monument was found or placed.

- 1834 MILLER PG 31 EAST RANDOM BETWEEN SECS 29 & 32  
5299.8 INTERSECT SEC LINE 5.94' NORTH POST LAND  
LEVEL 2ND RATE OAK & HICKORY TIMBER OAK &  
HAZEL U.G. {UNDER GROWTH}  
WEST CORRECTED BETWEEN SECS 29 & 32
- 531.3 BUR OAK 20  
2649.9 1/4 SEC POST BUR OAK 12 S 10W 8.58'; BUR OAK  
16 N43W 46.86'  
3464.34 WHITE OAK 22 IN DIA  
5045.7 BUR OAK 12 IN DIA  
5299.8 SEC CORNER
- 1845 NEWARK TWP RD REC BK 1 PG 7 "TO BE THE CENTERLINE OF  
HIGHWAY OF 4 RODS IN WIDTH WHICH RUNS THUS -  
BEGINNING AT AN ANGLE IN AN HIGHWAY ABOUT 330' WEST  
OF GOODHUE'S FLOORS IN DISTILLERY DAM - THENCE N70W  
3,366' - THENCE N83W 1386' - THENCE S57W 858' - THENCE  
S80W 3960' THEN CE N74 1/3W 1980' TO SECTION LINE -  
THENCE S87W 990' TO 1/4 S. SIDE SECTION 29 TOWN RANGE  
11 SAME COURSE TO CENTER SW 1/4 1386' - THENCE N36W  
3366' - THENCE N26W 3960 TO ROAD FROM BELOIT TO  
SUGAR RIVER.
- 1871 COLLIN'S REMONUMENTATION NOTES  
PG 187 EAST BETWEEN 29 & 32 VARIATION 7-30  
2686.2 INTERSECT 1/4 LINE 3.3' NORTH OF CORNER SET  
1/4 STONE BY STUMPS OF WITNESS TREES  
CORRECTED VARIATION 7-34  
CONTINUED EAST VARIATION 7-30
- 5350.62 SECTION CORNER
- 1959 SHIMEALL #3230 FD STONE. 1330.19 TO S 1/16<sup>TH</sup> COR OF SW  
1/4 SEC 29, 1330.19 FROM S 1/16<sup>TH</sup> COR OF SW 1/4 SEC 29 TO  
SW COR SEC 29, 2660.38 TO NW COR SEC 32, ANGLE 90-06-  
30 @ SW COR SEC 29 FROM W 1/4 COR SEC 29 TO S 1/4 COR  
SEC 29
- 1961 LEE CSM 15 PG 39 1352.75 SOUTH TO 1/16 TH COR  
1962 BATTERMAN VOL 4 PG 65 FD CUT STONE MON. @ CENTER OF  
PVMT & REFERENCED SAME  
1962 BATTERMAN VOL 4 PG 210 SAME TIES AS VOL 4 PG 65  
1964 BATTERMAN #4356 RESET N 1/4 COR FROM COUNTY  
SURVEYORS RECORDS
- 1973 LEE CSM 3 PG 251 2684.28 TO NE COR SEC 32 FD PIPE.  
FROM SE COR SEC 29 1342.20 TO FD BOLT @ S 1/16<sup>TH</sup> OF SE  
1/4 SEC 29, & 1342.08 FROM FD BOLT @ S 1/16<sup>TH</sup> OF SE 1/4  
SEC 29 TO S 1/4 COR SEC 29.
- 1974 LEE CSM VOL 4 PG 227 LEGEND CALLS FOR CI  
1980 TOWNSEND CSM 10 PG 63 2683.95 TO NE COR SEC 32  
1984 LEE CSM 11 PG 437 2705.5 TO CENTER SEC 32  
1989 LEE #12372 1342.12 FROM NE COR SEC 32 WEST TO  
1/16TH COR
- 1989 HOULE #8195 FD IP 1342.04 TO S 1/16<sup>TH</sup> COR OF SE 1/4 OF  
SEC 29 & 1342.12 FROM TO S 1/16<sup>TH</sup> COR OF SE 1/4 OF SEC  
29 TO SE COR SEC 29.
- 1991 LEE CSM VOL 15 PG 39 STATES NOTHING ABOUT MON.  
1352.75 TO W 1/16<sup>TH</sup> COR OF NE 1/4 OF SEC 32.
- 2001 BARNES V-7 FD 1" PIPE IN EAST BOUND LANE & REFERENCE  
TIES IN VOL 4 PG 210. COR. IS NOT IN CENTER OF PVMT AS  
CALLED FOR IN VOL 4 PG 210. PIPE IS 5.1' SOUTH OF  
CENTER OF PVMT. ACCEPTED FD PERPETUATED LOCATION.

SHEET 1 OF 45

David Barnes  
May 27 2004

V-7(1)

NE604

R.H. BATTERMAN CREW REPORTED FINDING 2 BENT PIPES ABOUT 0.15' APART. I FD 2 BENT PIPES 0.15' APART & ABOUT 0.1' DEEP. REMOVED PIPES AND MEASURED TO VERTICAL PIPE HOLES. PLACED POLY MON. IN HARMONY WITH FD NE REFERENCE PIPE AND FD R/R AT S 1/16<sup>TH</sup> COR OF SE 1/4 SEC 29. THE REC DISTANCE FROM THE SEC COR 29 TO THE NW REF. MON IN VOL 4 PG 210 IS 59' & THE COMPUTED DISTANCE IS 59.5'. THEREFORE THE 1062 DRAWING INCORRECTLY SHOWS THE COR AT THE CENTER OF THE RD.

C) Was the corner restored through acceptance of (1) an obliterated evidence location, or, (2) a found perpetuated location?

ACCEPTED PERPETUATED LOCATION. THIS POSITION IS IN HARMONY WITH EXISTING SURVEYS

D) Describe any material discrepancy between the location of the corner as restored or reestablished and the location of that corner as previously restored or reestablished by distance and direction. Show the discrepancy on the plan view drawing under (a), above. Show the distances between the corner as previously restored or reestablished and (1) the corner as restored or reestablished, and (2) to at least 4 of the witness monuments shown on the drawing in (a), above.

DISCREPANCY IS AS SHOWN IN DRAWING. THERE ARE THREE CONFLICTING POSITIONS. TWO ARE THE BENT PIPES AND THE THIRD IS THE POSITION OF THE TOP OF BENT PIPE THAT I FOUND.

(E) Was the corner reestablished through lost corner proportionate methods? If so, show the method, including the directions and distances to other public land survey corners used as evidence or used for proportioning the corner location.

NO

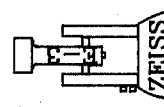
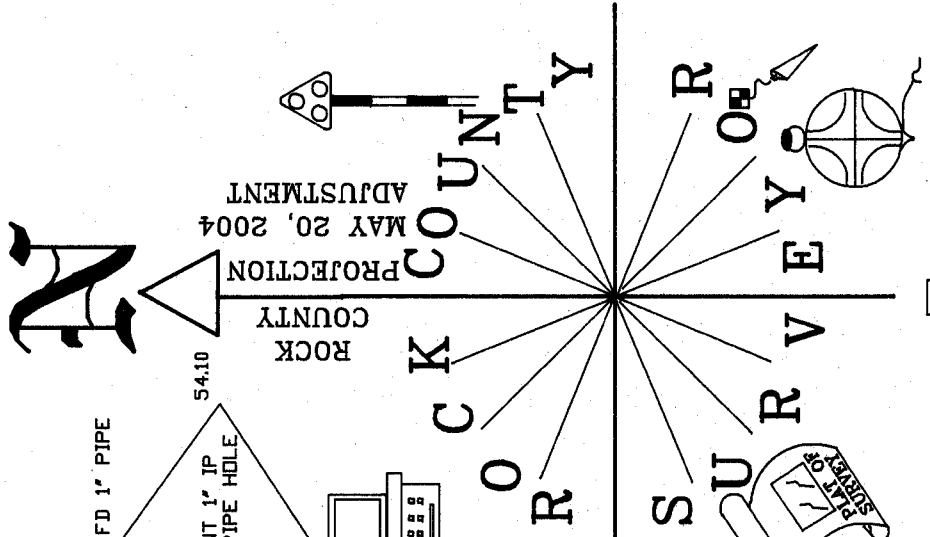
I, **Donald Barnes**, hereby certify that the corner location as identified by the corner code index was determined by me under my direction and control and that this U.S. Public Land Survey Monument Record is correct and complete to the best of my knowledge and belief.

*Donald Barnes*  
seal  
May 27 2004  
enboss

sheet 2 of 5

CORNER CODE **V-7(1)**

A-E 7.08 REQUIREMENT



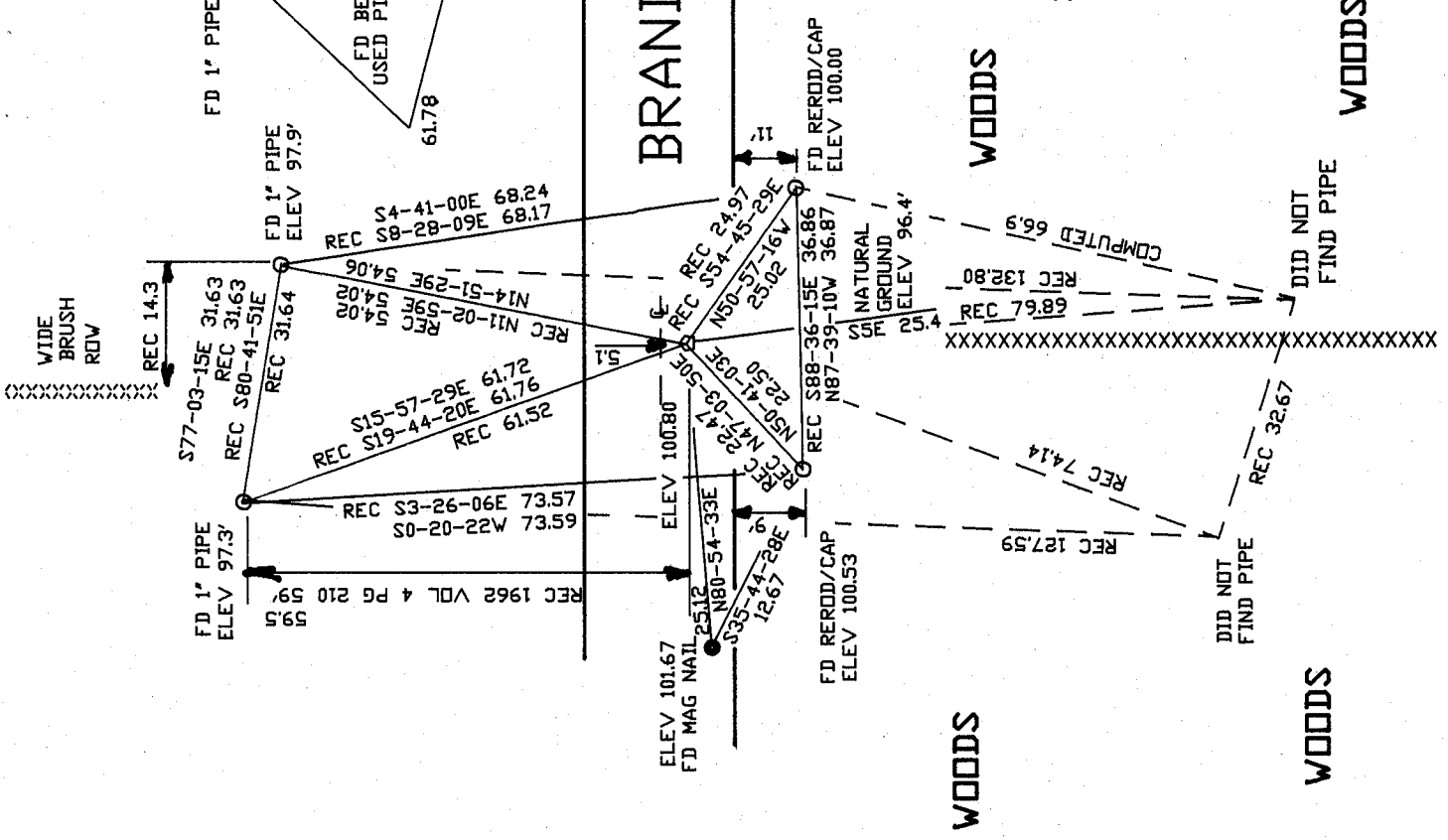
NOT TO SCALE

OBSERVATION SHEETS #144, 148, & 1604  
ASSUMED VERTICAL DATUM

S 1/4 COR  
SEC 29  
NEWARK TWP  
TIN R11E

● SET POLY

BRANDHERM RD  
ROCK COUNTY SURVEY



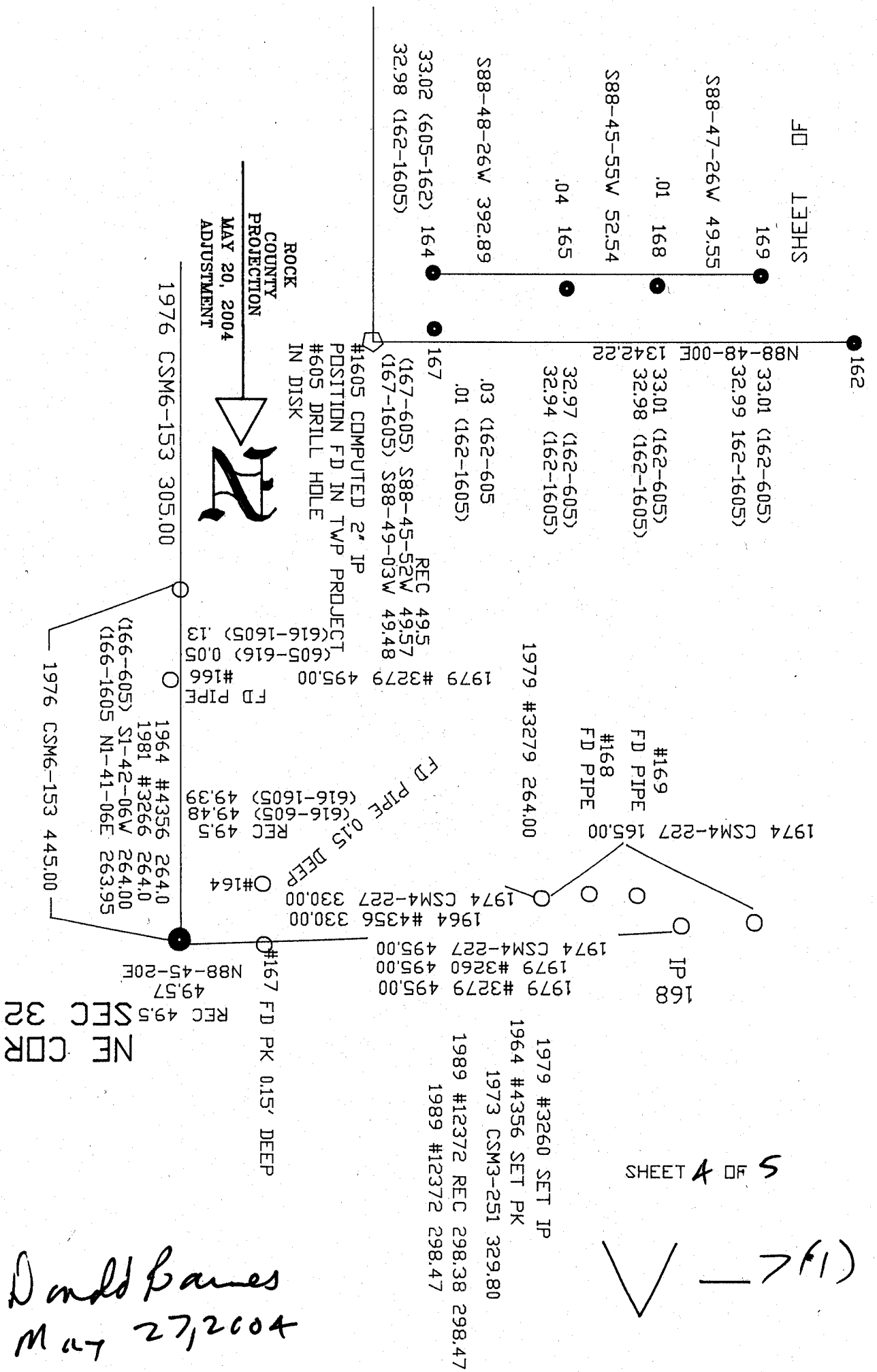
*Donald Barnes*  
EMBOSSSED SEAL

May 27, 2004

SHEET 3 OF 5

V-7(1)

FD LEHS



SHEET A OF 5

✓ — (7F1)

NF SEC 32  
COR

Donald Barnes  
May 27, 2004

