

U.S. PUBLIC LAND SURVEY MONUMENT RECORD

For Public Land Survey Corners in:

WI ADMINISTRATIVE CODE A-E 7.08 REQUIREMENT

T. 1 N., R. 11 E

CORNER CODE INDEX

A	2	3	4	5	6	7	8	9	10	11	12	13	14	15	16	17	18	19	20	21	22	23	24	25
B	6																							
C																								
D																								
E																								
F																								
G	7	8	9	10	11	12	13	14	15	16	17	18	19	20	21	22	23	24	25	26	27	28	29	30
H																								
I																								
J																								
K	18	17	16	15	14	13	12	11	10	9	8	7	6	5	4	3	2	1						
L																								
M																								
N																								
O																								
P	19	20	21	22	23	24	25	26	27	28	29	30	31	32	33	34	35	36	37	38	39	40	41	42
Q																								
R																								
S																								
T																								
U																								
V																								
W																								
X																								
Y																								
Z																								

NEWARK TWP

ROCK COUNTY WI

IF AVAILABLE
ROCK COUNTY COORDINATES PERFERRED

North _____ Elev. _____

East _____

Hor. Datum _____ Vert. Datum _____

LATITUDE _____ ELLIPS. HT. _____

LONGITUDE _____

GPS (X) _____ TRAVERSE (X) _____

BASED ON THE FOLLOWING CONTROL:

PLACE MONUMENT SYMBOL AT PROPER LOCATION ON ABOVE INDEX

CORNER MONUMENT

WITNESS MONUMENT

(a)

BEARINGS ARE BASED ON:

FIELD BOOK _____ PAGE # _____

SHEET 1 OF 3

SHOW A PLAN VIEW DRAWING DEPICTING THE CORNER MONUMENT AND SURROUNDING PHYSICAL FEATURES, INCLUDING THE EXCAVATION AREA AND DEPTH.

PLANNING & ZONING COMMITTEE ADOPTED THE ABOVE FORM ON 12/2/1982

CORNER CODE E-17 (1)

NE529

(B) Describe any record evidence, monument evidence, occupational evidence, testimonial evidence or any other material evidence you considered, and whether the monument was found or placed.

- 1834 MILLER PG 24 EAST RANDOM BETWEEN SECS 3 & 10
2719.2 TRAIL N.W.
5275.38 INTERSECTED SEC LINE 4.62' NORTH POST. LAND DRY ROLLING PRAIRIE 2ND RATE.
WEST CORRECTION
2637.36 SET 1/4 SEC POST IN MOUND OF EARTH AND SOD
5275.38 SEC COR.
PG 19 NORTH BET 2 & 3
2640 SET 1/4 SEC POST BUR OAK 12 S47E 274.56', BUR OAK 12 N9E 4.03' (402.6')?
3960 LEAVE PRAIRIE
5326.2 INTERSECTED NORTH BOUNDARY 31.02 WEST OF POST. SET POST COR OF 2 & 3. BUR OAK 12 IN S45E 85.8', WHITE OAK 20 S80W 64.68' LAND GENTLY ROLLING 2ND RATE. MARCH 9, 1834
PG 18 EAST BET 2 & 11
132 ENTER TIMBER
5280 INTERSECT SEC. LINE 1.98' SOUTH OF POST.
LAND GENTLY ROLLING 2ND RATE TIBMER OAK & HICKORY, (MUCH OAK HARD & ASPEN UNDERGROWTH)
WEST CORRECTED BETWEEN 2 & 11
2640 SET 1/4 SEC POST WHITE OAK N5 1/2W 118.8'; WHITE OAK S56W 151.8'
3960.66 WHITE OAK 20 IN DIA.
PG 18 NORTH BETWEEN SECS 10 & 11
2640 SET 1/4 SEC POST YELLOW OAK 18 S57-30E 124.74; ASPEN 10 N70-30E 184.8'
3676.2 TRAIL N.W.
5280 SET POST COR OF SECS 2,3,10,11 BUR OAK 10 S11E 175.56'; BUR OAK 10 N6W 132'. LAND DRY ROLLING PRAIRIE HAS SOME SCATTERING TREES.
1871 COLLINS REMONUMENTATION
PG 171 EAST BETWEEN 3 & 10 VARIATION 2-05
2685.54 SET 1/4 STONE IN OLD MOUND AS SHOWN BY MR. POWERS.
CONTINUED EAST SAME VARIATION
5320.92 SECTION CORNER.
PG 159 NORTH BETWEEN 2 & 3 VARIATION 6
2654.52 INTERSECT 1/4 LINE 7.26' EAST OF CORNER. SET 14 STONE IN CENTER OF HIGHWAY IN LINE WITH FENCE EAST. CORRECTED VARIATION 5-50
CONTINUED NORTH VARIATION 6
5497.14 INTERSECT TOWN LINE 38.28' EAST OF CORNER. SET STONE FOR CORNER OF 2 & 3 STUMPS OF WITNESS TREES. CORNER OF 34 & 35 T2R11 IS 31.02 EAST. CORRECTED VARIATION 5-10
PG 158 EAST BETWEEN 2 & 11 VARIATION 7-30
2647.92 SET 1/4 STONE IN PLACE OF STONE SET BY McVEAN AGREEING WITH STUMPS OF WITNESS TREES.
CONTINUED EAST SAME VARIATION
5282.64 SEC CORNER
PG 157 NORTH BETWEEN 10 & 11 VARIATION 5-50
2666.4 INTERSECT 1/4 LINE 4.62' EAST OF CORNER. SET 1/4 STONE IN PLACE OF OLD STAKE FOUND BY STUMP OF WITNESS TREE. VARIATION CORRECTED 5-44
CONTINUED NORTH VARIATION 5-20
5334.78 SET STONE FOR CORNER OF 2,3,10,11 BY ROOTS OF WITNESS TREES.
1873 RUGER VOL 2 PG 117 STONE MON. 2630.60 TO S 1/4 COR SEC 3

SHEET 1 OF 3

E-17(1)

- 1882 HOLMES VOL 2 PG 347 CALLS FOR MON BUT STATES NOTHING ABOUT IT. 2663.43 VAR 4-45 TO W 1/4 COR SEC 11 & SOUTHERLY 671.72 TO A POINT AND THEN S71-15E MAG. 1460.25 TO S 1/16TH COR OF NW 1/4 OF SEC 11.
- 1968 BATTERMAN VOL 4 PG 361 FD CUT STONE 2' DEEP. REFERENCED SAME.
- 1977 BARNES VOL 5 PG 332 FD ALUM. MON & REF. PIPES.
- 1977 BARNES VOL 5 PG 336 INSTALLED 1" RISER
- 1986 BARNES VOL 6 PG 358 N0-14-57W 2648.06 TO W 1/4 COR SEC 2.
- 1991 BARNES E-17 FD ALUM. MON. & REFERENCED SAME. ROAD PAVING PROJECT WILL INVOLVE THIS CORNER. DID NOT ACCEPT NOR REJECT MONUMENT. REFERENCED FOUND MONUMENT SO IT WOULD NOT BE DESTROYED BY THE PAVING PROJECT.

FOUND ALUM. MON. ROTTING AWAY. FD T-PART OF MON. SET COTTON GIN PIN 0.6' DEEP.

C) Was the corner restored through acceptance of (1) an obliterated evidence location, or, (2) a found perpetuated location?

ACCEPTED FOUND PERPETUATED LOCATION.

D) Describe any material discrepancy between the location of the corner as restored or reestablished and the location of that corner as previously restored or reestablished by distance and direction. Show the discrepancy on the plan view drawing under (a), above. Show the distances between the corner as previously restored or reestablished and (1) the corner as restored or reestablished, and (2) to at least 4 of the witness monuments shown on the drawing in (a), above.

(E) Was the corner reestablished through lost corner proportionate methods? If so, show the method, including the directions and distances to other public land survey corners used as evidence or used for proportioning the corner location.

I, Donald Barnes, hereby certify that the corner location as identified by the corner code index was determined by me under my direction and control and that this U.S. Public Land Survey Monument Record is correct and complete to the best of my knowledge and belief.

seal

Donald Barnes

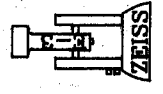
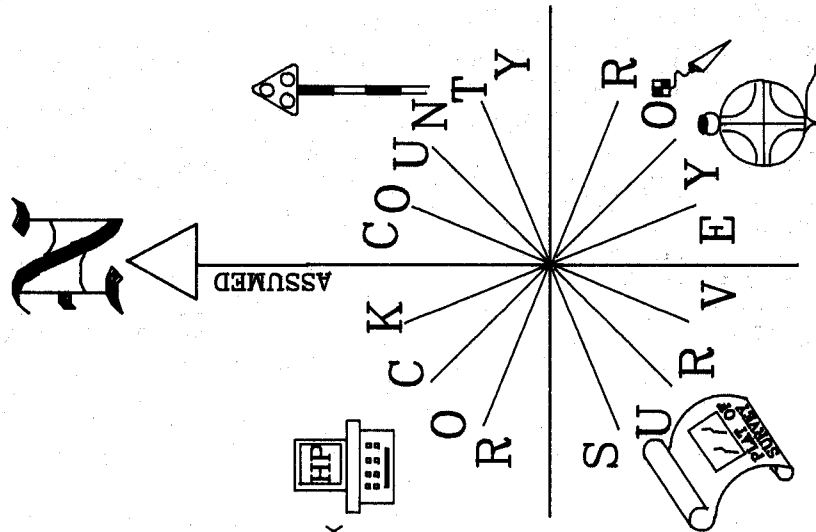
emboss

Dec 20, 2000

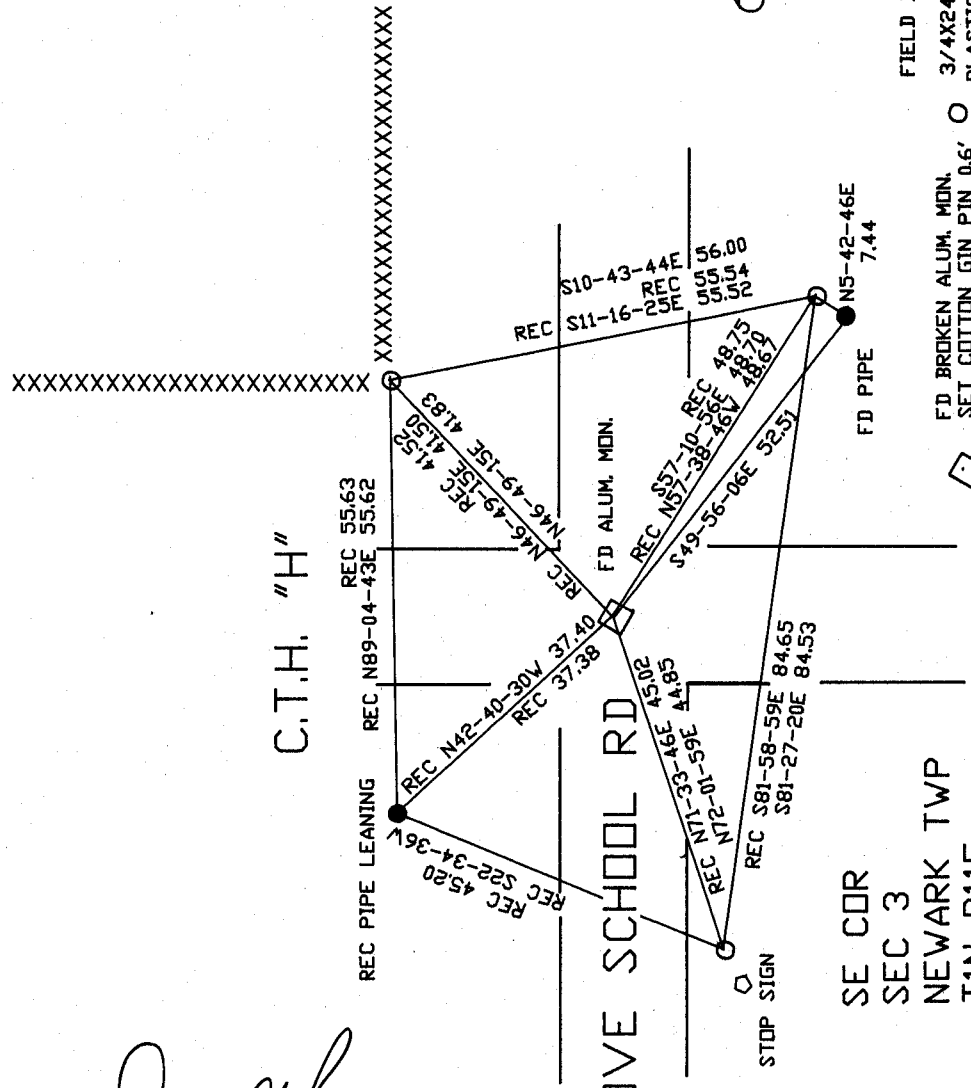
SHEET 2 OF 3

CORNER CODE **E-17 (1)**

A-E 7.08 REQUIREMENT



FIELD BOOK #2 PG 6
 3/4X24 REEROD WITH PLASTIC CAP
 OBSERVATION SHEET #529



FD BROKEN ALUM. MON.
 SET COTTON GIN PIN 0.6'
 DEEP IN T PART
 OF MON.

Donald Barnes
 EMBOSSED SEAL

Dec 20, 2000

E-17(1)