

# U.S. PUBLIC LAND SURVEY MONUMENT RECORD


For Public Land Survey Corners in:  
T. 3N., R. 11E 4th P.M.  
CORNER CODE INDEX

WI ADMINISTRATIVE CODE A-E 7.08 REQUIREMENT

Center TWP  
**ROCK COUNTY, WI**

IF AVAILABLE  
ROCK COUNTY COORDINATES PREFERRED

A	1	2	3	4	5	6	7	8	9	10	11	12	13	14	15	16	17	18	19	20	21	22	23	24	25
B	6				5				4				3					2						1	
C																									
D																									
E																									
F																									
G																									
H																									
I																									
J																									
K																									
L																									
M																									
N																									
O																									
P																									
Q																									
R																									
S																									
T																									
U																									
V																									
W																									
X																									
Y																									
Z																									

PLACE MONUMENT SYMBOL  AT PROPER LOCATION ON ABOVE INDEX

North \_\_\_\_\_ Elev. \_\_\_\_\_

East \_\_\_\_\_

Hor. Datum \_\_\_\_\_ Vert. Datum \_\_\_\_\_

LATITUDE \_\_\_\_\_ ELLIPS. HT. \_\_\_\_\_


LONGITUDE \_\_\_\_\_

ELLIPS. DATUM \_\_\_\_\_

NAD83(91) \_\_\_\_\_ COUNTY \_\_\_\_\_ LIST \_\_\_\_\_

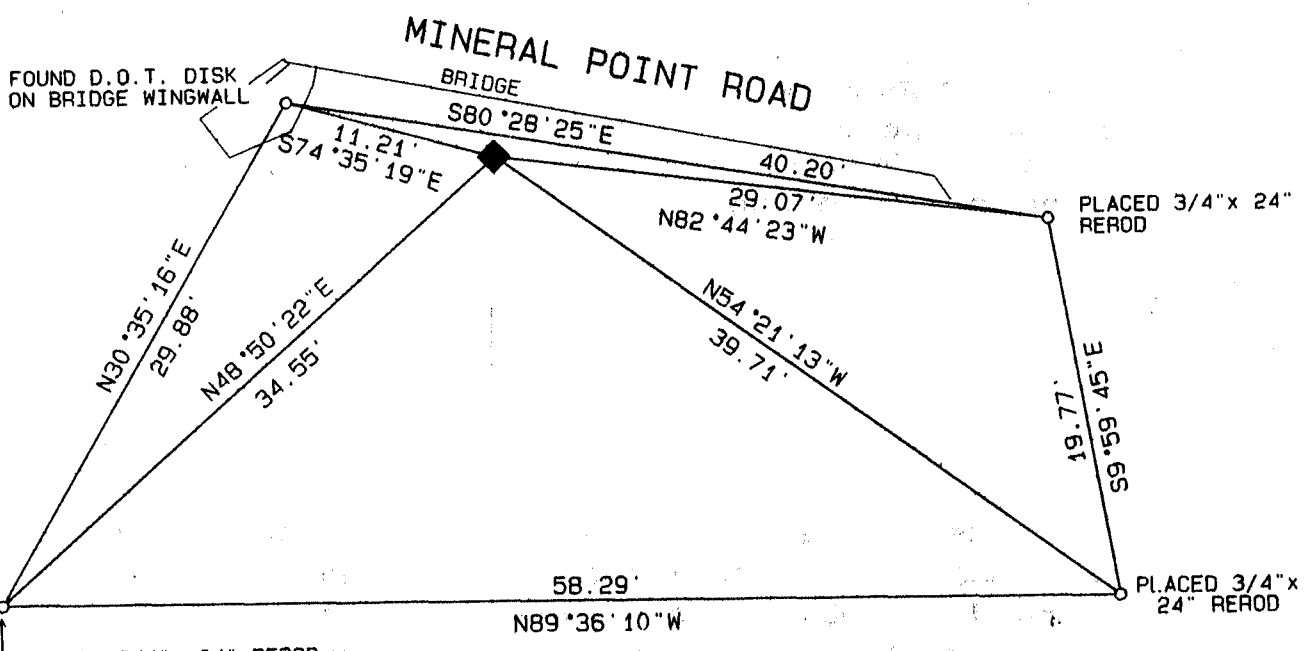
GPS (X) \_\_\_\_\_ TRAVERSE (X) \_\_\_\_\_

BASED ON THE FOLLOWING CONTROL:

 CORNER MONUMENT  
Unable to set - Corner falls in Creek

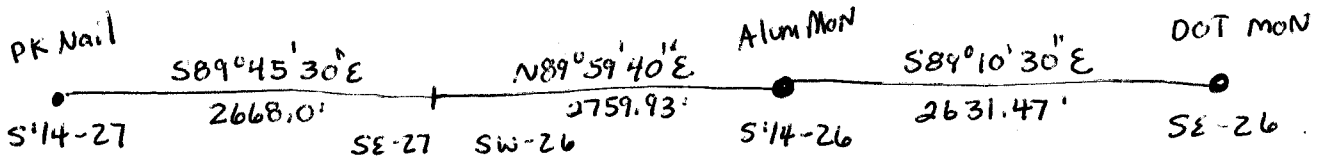
 WITNESS MONUMENT

(a)  
BEARINGS ARE BASED ON:  
Assumed Datum



B) Describe any record evidence, monument evidence, occupational evidence, testimonial evidence or any other material evidence you considered, and whether the monument was found or placed.

Used other section corners previously located by Don Barnes and Ron Combs to compute location of SE corner of Sec. 27-3-11.



C) Was the corner restored through acceptance of (1) an obliterated evidence location, or, (2) a found perpetuated location?

obliterated evidence

D) Describe any material discrepancy between the location of the Corner as restored or reestablished and the location of that corner as previously restored or reestablished by distance and direction. Show the discrepancy on the plan view drawing under (a), above. Show the distances between the corner as previously restored or reestablished and (1) the corner as restored or reestablished, and (2) to at least 4 of the witness monuments shown on the drawing in (a), above.

Vol. 5 Pg. 347 County Surveyor Records show Corner on top of bridge. This bridge has been replaced in a different location. Corner falls in Creek. All reference corners gone.

E) Was the corner reestablished through lost corner proportionate methods? If so, show the method, including the directions and distances to other public land survey corners used as evidence or used for proportioning the corner location.

NO

I, Steven Lathrop, hereby certify that the corner location as identified by the corner code index was determined by me under by direction and control and that this U.S. Public Land Survey Monument Record is correct and complete to the best of my knowledge and belief.

seal

emboss/stamped



Steven Lathrop  
8-8-2000

Number of included sheets \_\_\_\_\_

A-E. 7.08 REQUIREMENT

CORNER CODE

V-17(2)