

per weight-110# (minimum)

k nonfading ink required

U.S. PUBLIC LAND SURVEY MONUMENT RECORD

For Public Land Survey Corners In:

WI ADMINISTRATIVE CODE A-E 7.08 REQUIREMENT

T. 4 N. R. 13 E. 4th P.M.

REV 10/23/2004

USMONREC.DWG

CORNER CODE INDEX

Milton

TWP

ROCK COUNTY WI

IF AVAILABLE

ROCK COUNTY COORDINATES PREFERRED

North 301676.086 Elev. _____

East 524566.678

Hor. Datum _____ Vert. Datum _____

LATITUDE _____ ELLIPS. HT. _____

LONGITUDE _____

NAD83(91) _____ NETWORK ADJ. YR 2010

GPS (X) _____ TRAVERSE (X) X

BASED ON THE FOLLOWING CONTROL:

1	2	3	4	5	6	7	8	9	10	11	12	13	14	15	16	17	18	19	20	21	22	23	24	25	
A																									A
B																									B
C	6																								C
D																									D
E																									E
F																									F
G	7																								G
H																									H
I																									I
J																									J
K																									K
L	18																								L
M																									M
N																									N
O																									O
P	19																								P
Q																									Q
R																									R
S																									S
T																									T
U																									U
V																									V
W																									W
X																									X
Y																									Y
Z																									Z

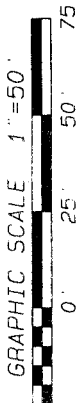
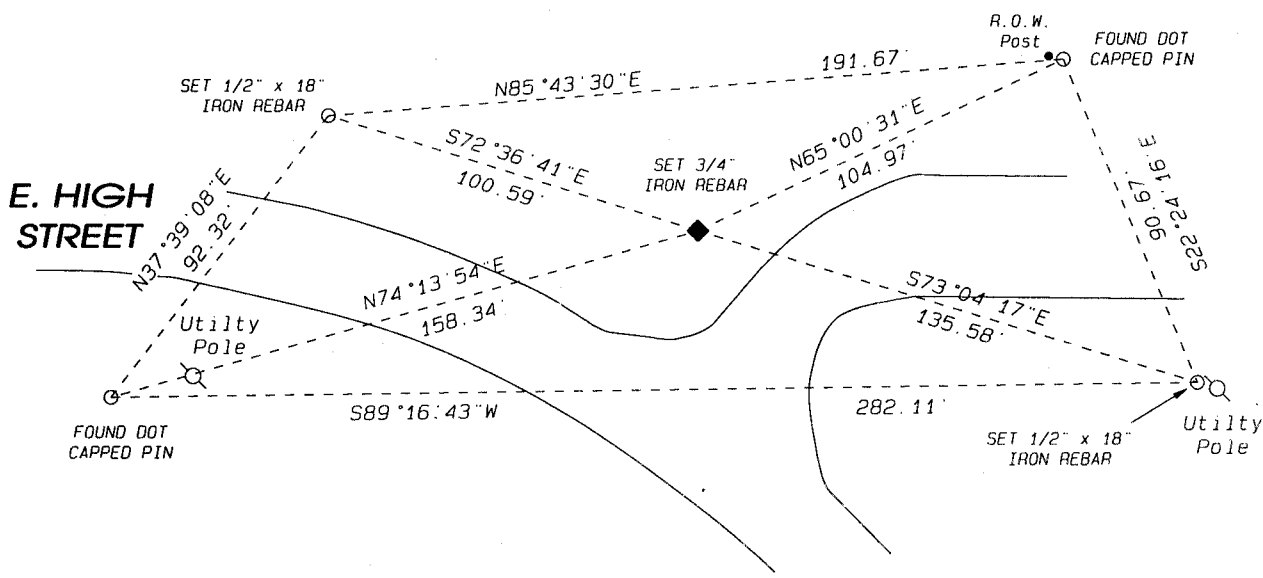
PLACE MONUMENT SYMBOL \blacklozenge AT PROPER LOCATION ON ABOVE INDEX

\blacklozenge CORNER MONUMENT

\circ WITNESS MONUMENT

(a) ROCK COUNTY PROJECTION
Assumed Section along
South line of sec 14
Sec. 25-4-13.

BEARINGS ARE BASED ON:



FIELD BOOK _____ PAGE # _____
OR OBSERVATION SHEET _____

SHEET 1 OF 2

SHOW A PLAN VIEW DRAWING DEPICTING THE CORNER MONUMENT AND SURROUNDING PHYSICAL FEATURES, INCLUDING THE EXCAVATION AREA AND DEPTH.

PLANNING & ZONING COMMITTEE ADOPTED THIS FORM ON 12/2/1982

CORNER CODE V-23(4)