

Paper weight-110# (minimum)

Black nonfading ink required

U.S. PUBLIC LAND SURVEY MONUMENT RECORD

For Public Land Survey Corners In:
T. 3 N. R. 12 E. 4th P.M.

WI ADMINISTRATIVE CODE A-E 7.08 REQUIREMENT

REV 10/23/2004

USMONREC.DWG

CORNER CODE INDEX

1	2	3	4	5	6	7	8	9	10	11	12	13	14	15	16	17	18	19	20	21	22	23	24	25	
A																									A
B	6					5					4				3					2				1	B
C																									C
D																									D
E																									E
F																									F
G	7					8					9				10					11				12	G
H																									H
J																									J
K																									K
L	18					17					16				15					14				13	L
M																									M
N																									N
O																									O
P	19					20					21				22					23				24	P
Q																									Q
R																									R
S																									S
T	30					29					28				27					26				25	T
U																									U
V																									V
W																									W
X	31					32					33				34					35				36	X
Y																									Y
Z																									Z

JANESVILLE TWP
ROCK COUNTY WI

IF AVAILABLE
ROCK COUNTY COORDINATES PREFERRED

North _____ Elev. _____

East _____

Hor. Datum _____ Vert. Datum _____

LATITUDE _____ ELLIPS. HT. _____

LONGITUDE _____

NAD83(91) _____ NETWORK ADJ. YR _____

GPS (X) _____ TRAVERSE (X) _____

BASED ON THE FOLLOWING CONTROL:

PLACE MONUMENT SYMBOL AT PROPER LOCATION ON ABOVE INDEX

CORNER MONUMENT

WITNESS MONUMENT

(a)

BEARINGS ARE BASED ON:

FIELD BOOK _____ PAGE # _____

SHEET 1 OF 2

SHOW A PLAN VIEW DRAWING DEPICTING THE CORNER MONUMENT AND SURROUNDING PHYSICAL FEATURES, INCLUDING THE EXCAVATION AREA AND DEPTH.

PLANNING & ZONING COMMITTEE ADOPTED THIS FORM ON 12/2/1982

CORNER CODE 215(1)

JA628 S 1/4 COR SEC 34

(B) Describe any record evidence, monument evidence, occupational evidence, testimonial evidence or any other material evidence you considered, and whether the monument was found or placed.

- 1833 BRINK 2640 FROM SW TO S 1/4 COR SEC 34 & 2640 FROM S 1/4 COR SEC 34 TO SE COR SEC 34.
- 183? ORIG GOV. SURVEY. ESTABLISHED NO MON AT N 1/4 COR SEC 3. @ NW COR SEC 3 THE ORIG SURVEY CLOSED 33' WEST OF THE SW COR OF SEC 34 JANESVILLE TWP & @ THE NE COR SEC 3 THE ORIG SURVEYOR CLOSED AT THE SE COR OF SEC 34 JANESVILLE TWP
- 1865 LOCKE MAP #3675 STATES NOTHING ABOUT MON. CALLS FOR 2751.54 TO CENTER OF SEC 3 & 5391.54 TO S 1/4 COR SEC 3.
- 1866 LOCKE VOL 1 PG 267 & MAP #3764 @ S 1/4 COR SEC 34 FOUND 3 BT & STUMP OF BT. CALLS FOR NW COR SEC 3 WEST 19.8 OF SW COR SEC 34 WHERE HE FD BTS & FENCE POST ON COR.
SHOWS THE CORNER 9.9' WEST OF THE S 1/4 CORNER OF SECTION 34 JANESVILLE TOWNSHIP AT A DISTANCE OF 9.9'. SHOWS A DISTANCE OF 2661.12 TO THE NW CORNER OF SECTION 3 AND 2751.54' TO THE CENTER OF SECTION 3, 5407.38 TO S 1/4 COR SEC 3.
- 1866 LOCKE VOL 1 PG 271 & MAP #5874 AT S 1/4 COR SEC 34 FD E BT & STUMP OF W. BT. SET STAKE WITH STONE ON N & S & E & W. VAR 7-40 2660.13 TO SE COR SEC 34. 2663.02 TO SET LIMESTONE 22X9X4 WITH FLAT LIMESTONE ON N AND S AND E AND W. @ CENTER OF SEC 34, & 5326.04 TO N 1/4 COR SEC 34. 2657.82 VAR 6-50 FROM CEN SEC 34 TO W 1/4 COR SEC 34 & 2657.82 VAR 7-00 FROM CEN SEC 34 TO E 1/4 COR SEC 34. CENTER OF SEC 34 SET EQUAL DISTANCE FROM 1/4 CORNERS.
- 1868 LOCKE VOL 1 PG 323. & MAP #3695 SET OAK STAKE. SHOWS A DISTANCE OF VAR 7-37 1336.09 TO THE N 1/6TH CORNER OF THE NE 1/4 OF SECTION 3. THE CORNER IS 12.05 WEST OF THE S 1/4 CORNER OF SECTION 34 JANESVILLE TOWNSHIP. VAR 6-35 2751.54 TO CEN OF SEC 3.
- 18?? RUGER MAP #3782 FD COR SET BY SELF IN FORMER SURVEY. LIMESTONE (BROKEN) WITH 2 HH. PUT IN L.S. 8X8X24 SURROUNDED BY 4 L.S. 12.21' WEST OF S 1/4 COR SEC 34. @ S 1/4 COR SEC 34 FD COR SET BY SELF IN FORMER SURVEY- A HH 6X9X12 1/2 SURROUNDED BY 4 L.S. 2662.94 FROM N 1/4 COR SEC 3 TO NE COR SEC 3, 2758.80 TO CENTER OF SEC 3, & 2661.45 FROM N 1/4 COR SEC 3 TO NW COR SEC 3. @ N 1/4 COR SEC 3 THE SOUTH R/W LINE IS 34.82' & THE NORTH R/W LINE IS 29.54'. WEST 665.28' ON SEC LINE SET WEDGE SANDSTONE 16" LONG TOP 3 1/2 X 4 & 11 1/2 ACROSS BASE SURROUNDED BY 4 L.S. AT THE WEDGE SANDSTONE THE SOUTH R/W LINE IS 34.82 AND THE NORTH R/W LINE IS 31.18'. @ NW COR SEC 3 DROVE STAKE SURROUNDED BY 5 L.S. COR IS 19.8' WEST OF SW COR OF SEC 34. @ SW COR SEC 34 FD REMAINS OF CEDAR POST UNDER GROUND IN LINE N/S FENCE. DROVE CHERRY STAKE IN ITS PLACE SURROUNDED BY HH.
- 1892 BLEEDORN VOL 2 PG 464 FOUND CORNER SET LIMESTONE AND SURROUNDED IT BY 4 HARDHEADS. SHOWS THE CORNER 12.21 WEST OF THE S 1/4 CORNER OF SECTION 34 JANESVILLE TOWNSHIP. SHOWS A DISTANCE OF 2676.96(?) TO THE NE CORNER OF SECTION 3.
- 1919 UNKNOW MAP #3776 7X8X15 LS ON END 12.21' WEST OF S 1/4 COR SEC 99.2' SW OF NAIL? IN SOUTH FACE OF POLE 3-12-34, 29.2 NW OF 8" CHERRY. WESTERLY 665.28 TO NE CORNER OF A 281.8' LOT WHICH IS 773 DEEP. 5X8X15 W. HH @ S 1/4 COR SEC 34. ABSTRACT NO 4
- 1932 SUNNY VOL 3 PG 209 FOUND 7X8X15 LIMESTONE ON END. SHOWS A DISTANCE OF 12.2' TO THE S 1/4 CORNER OF SECTION 34.

Emboss Seal
Ronald Barnes

6-01/07

JA628 S 1/4 COR SEC 34

- 1961 BATTERMAN MAP #05869 @ N 1/4 COR SEC 3 DUG & FD 2" PIPE 12.7W OF H.H., @ S 1/4 COR SEC 34 DUG & FD HH 5X8X15, @ SE COR SEC 34 FD COR & REFERENCE, PIPE 1331.00 FROM 1/16TH COR TO S 1/4 COR SEC 34 & SE COR SEC 34, 2654.20 FROM S 1/4 COR SEC 34 TO CENTER OF SEC 34, & ANGLE 89-14-10 @ SE COR SEC 34 FROM S 1/4 COR SEC 34 TO E 1/4 COR SEC 34. TIES OF S 1/4 COR SEC 34 ARE THE RECORD TIES SHOWN IN A-15. IN DRAWING THERE IS A POINT 9.77' EAST OF THE S 1/4 COR SEC 34. @ THIS PT THERE IS A N/S LINE WITH NOTE: STRAIGHT LINE FROM N 1/4 COR THROUGH THE CENTER OF SEC PROJECTED SOUTH.
- 1962 BATTERMAN JR. VOL 4 PG 126 FOUND 2" PIPE @ N 1/4 COR & 5X8X15 HH @ S 1/4 COR SEC 34 AND REFERENCED THEM. SHOWS A DISTANCE OF 12.71 TO S 1/4 CORNER OF SECTION 34. NOTE: BOTH REFENENCES ARE FROM THE JANESVILLE CITY ENG. OFFICE.
- 1962 THOM MAP#03750 FD 2" PIPE THENCE EAST 331.80 TO PIPE @ NW COR OF 160.00 LOT THENCE 202.77 TO PK @ BRIDGE. R/W IS 33.00 @ LOT. SHOWS S 1/4 COR SEC 34 EAST OF CORNER.
- 1964 DOBSON - WPL - STATES NOTHING ABOUT COR. WESTERLY 1000.0 FROM NE COR SEC 3 TO NAIL ON SECTION LINE. ANGLE OF 90-27 @ NE COR SEC 3 FROM EAST SECTION LINE OF SEC 3 TO NORTH LINE OF SEC 3.
- 1968 LEE VOL 6 PG 71 SHOWS A DISTANCE OF 2685.54 TO THE CENTER OF SECTION 3.
- 1975 WPL - SPRAGUE MAP#03772 STATES NOTHING ABOUT MON. CALLS FOR NAD27 246,278.53; 2,252,489.68 @ N 1/4 COR SEC 3, 246,234,.89; 2,249,846.79 @ NW COR SEC 3. INV OF SB9-03-14W 2663.06 FROM N 1/4 COR TO NW COR SEC 3 & ANGLE OF 90-41-44 @ NW COR SEC 3 FROM N 1/4 COR SEC 3 TO W 1/4 COR SEC 3.
- 1981 COMBS #13201 FD ALUM @ N 1/4 COR SEC 3, FD CI @ S 1/4 COR SEC 34, 2655.33 FROM S 1/4 COR SEC 34 TO SW COR SEC 34, SB9-10-50E 2663.00 FROM S 1/4 COR SEC 34 TO SE COR SEC 34, N88-08-30W 12.18 FROM S 1/4 COR SEC 34 TO N 1/4 COR SEC 3. SET PIPE 33.00 NORTH OF 1/4 COR.
- 1981 BARNES VOL 6 PG 154 FOUND 2" IRON PIPE AND REFERENCE TIES. REPLACED PIPE WITH ALUMINUM MONUMENT WHICH IS ON TOP OF STONE OF RECORD. ROCK TWP FIELD BOOK #2 PG 4 & 5 DATED MAR 1981 FD 2" PIPE & TIES @ N 1/4 COR SEC 3. DID NOT MEASURE TO REFERENCE PIPES. REPLACED PIPE WITH ALUM ON TOP OF REC STONE. AT S 1/4 COR SEC 34 FD 9" NAIL. REPLACED IT WITH CI. ON TOP OF REC. STONE. FD 2" PIPE 319.53 EAST OF CI, PK 1055.71 WEST OF SE COR SEC 34. PK IS 0.08' NORTH OF LINE BETWEEN SE 34 & CI. MEASURED 2663.13 (REC BATTERMAN 2662.00) FROM S 1/4 COR SEC 34 TO SE COR SEC 34.
- 1981 BARNES VOL 6 PG 186 FOUND ALUMINUM MONUMENT SHOWS THE FOLLOWING DISTANCES:
- | | | |
|------------------|---------------|--------------------|
| TO: NW COR SEC 3 | LOCKE 1866 | 2661.13 |
| | RUGER | 2661.45 |
| | BARNES | N89-29-33E 2663.10 |
| NE COR SEC 3 | BLEEDORN 1892 | 2676.96 |
| | BARNES | N88-27-03E 2675.10 |
- ALSO SHOWS WPL COORDINATES AS N/S 246,278.53; E/W 2,252,489.68
AND MEASURED COORDINATES AS N/S 246,278.63; E/W 2,252,489.66

SHEET 2 OF 7

CORNER CODE Z-15(1)

Emboss Seal

Donald Barnes
6/01/07

- JA628 S 1/4 COR SEC 34
- 1982 TRUE MAP #3783 ALUM MON @ S 1/4 COR SEC 34
246,278.544; 2,252,489.656, @ SE COR SEC 34 DRILL HOLE
IN M.H. COVER 246,350.788; 2,255,163.725.
- 1983 SCHNEEBERGER A-15 FD ALUM & CI @ S 1/4 COR SEC 34.
REFERENCED CORNERS WITH NEW REFERENCE MONUMENTS.
CALLS FOR N 1/4 COR SEC 3 WEST OF S 1/4 COR SEC 34 BY
12.18' STATES COORDINATES FOR THE N 1/4 COR SEC 3 AS
246,278.63; 2,252,489.66'
- 1983 SCHNEEBERGER MAP#03784 FD ALUM. S89-29-33W
1956.90 TO NE COR OF A 188.50 LOT. 45.00 FROM NE COR
OF LOT TO PIPE ON R/W LINE & 52.36 FROM NW COR OF LOT
TO PIPE ON R/W LINE.
- 1985 LEE CSM VOL 12 PG 51 FD CI. S0-38-05W 1548.63 TO PIPE.
- 1986 BARNES JANESVILLE TWP PROJECT. JUNE 9 OBSERVATION
SHEET #22 CALLS FOR EASTERN AND WESTERN MONUMENT
AT S 1/4 COR & N 1/4 COR .
- 1987 BARNES Z-15 FD REF. PIPES, FD ALUM MON @ N 1/4 COR SEC
3, FD CI. @ S 1/4 COR SEC 34, FOR S 1/4 COR CALLS FOR
246,279.90; 2,252,501.84 ELEV 819.3 FOR N 1/4 COR SEC
3 CALLS FOR 246,279.80; 2,252,489.64 & WPL
COORDINATES OF 246,278.53; 2,252,489.68 JANESVILLE
FIELD BOOK #2 PG 7 DATED APRIL 3, 1987. FD CI AT S 1/4
COR SEC 34 & ALUM @ N 1/4 COR SEC 3. FD PIPE @ NE, SE, &
SW REFERENCE MONUMENTS. FD REROD FOR NW REFERENCE
MONUMENT. JUST SHOWS RECORD DISTANCES.
- 1988 BARNES JANESVILLE REMONUMENTATION PROJECT. S89-28-
47W 12.20 FROM THE S 1/4 COR SEC 34 TO THE N 1/4 COR SEC
3, N88-26-26E 2663.18 FROM THE S 1/4 COR SEC 34 TO THE
SE COR SEC 34, S89-28-49W 2655.36 FROM THE S 1/4 COR
SEC 34 TO THE SW COR SEC 34, & N88-42-49W 20.04' FROM
THE SW COR SEC 34 TO THE NW COR SEC 3.
- 1988 BARNES VOL 6 PG 382 SHOWS RECORD DISTANCES &
COMPUTED INVERSES. S 1/4 COR SEC 34 TO SW COR SEC 34
S89-28-49W 2655.49, S 1/4 COR SEC 34 TO SE COR SEC 34
N88-26-25E 2663.18, N2-19-10W 2654.18 TO CENTER OF
SEC 34, N2-31-26W 2678.48 FROM CEN TO N 1/4 COR SEC 34,
N88-31-22E 2661.08 FROM CEN TO E 1/4 COR SEC 34, & S89-
20-59W 2660.13 FROM CEN TO W 1/4 COR SEC 34.
- 1990 BARNES A-15(1) FOUND ALUM. MONUMENT. FOUND 4
REFERENCE MONUMENTS. CALLS FOR 12.18 WEST OF CI @ S
1/4 COR SEC 34. SHOWS RECORD TIE DISTANCES. NAD27
246,279.69; 2,252,489.72 JANESVILLE TWP PROJECT -
246,279.80; 2,252,489.64, WPL 246,278.53, 2,252,489.68
SCHNEEBERGER 246,278.63; 2,252,489.66
- 1990 SCHNEEBERGER A-15(2) FD ALUM. MON. SET NEW TIES.
SHOWS STATE PLANE COORDINATES OF 246,278.63;
2,252,489.66 SHOWS 12.18' WEST OF ALUM. MON. @ S 1/4
COR SEC 34.
- 1990 COMBS CSM VOL 14 PG 277 @ N 1/4 COR SEC 3 FD ALUM.
USED AS LINE FOR SURVEY COMMENCING AT A DRILL HOLE
IN MH COVER @ NE COR SEC 3 AND GOING WESTERLY 999.89
FROM THE NE COR.
- 1991 BARNES ROCK TWP REMON. PROJECT. N89-05-19E 2675.33
TO THE NE COR SEC 3, S89-51-50E 2663.20 TO THE NW COR
SEC 3, & S89-52-34E 12.22' TO THE S 1/4 COR SEC 34.
ANGLE 90-14-34 @ NW COR SEC 3 FROM N 1/4 COR SEC 3 TO
W 1/4 COR SEC 3, & ANGLE 181-02-51 @ N 1/4 COR SEC 3
FROM NE TO NW CORNERS SEC 3.
- 1994 GRUBER CSM VOL 17 PG 368 FD CONC. MON/ALUM CAP @ S
1/4 COR SEC 34 & SE COR SEC 34. N88-26-42W 2663.15
(2662.00) TO SE COR SEC 34 & N02-21-52W 2650.23
(2649.44) FROM SE COR SEC 34 TO E 1/4 COR SEC 34. SE 34
COORDINATES OF 246,352.31; 2,255,163.88

SHEET 3 OF 7

CORNER CODE **Z-15(1)**

Embloss Sent
Donald Barnes
6-01/07

JA628 S 1/4 COR SEC 34

1999 LATHROP MAP #7443 DOESN'T STATE TYPE OF MON. WESTERLY 1956.90 TO NE CORNER OF A 188.50 LOT. ON THE EAST SIDE THE SOUTH R/W LINE IS 44.24' & ON THE WEST SIDE OF THE LOT THE SOUTH R/W LINE IS 51.41'. CALLS FOR 2643.76 FROM THE N 1/4 COR SEC 3 TO THE SW COR OF SEC 34.

2001 KASTEN MAP #7953 FD ALUM & CI AT S 1/4 COR SEC 34. ALUM IS 12.18 WEST OF CI. FD ALUM AT NW SEC 3 & SW SEC 34. NW 3 IS 20.05 WEST OF SW COR SEC 34. 384.10 WESTERLY OF N 1/4 COR SEC 3 IS NE CORNER OF A 281.25 LOT THAT IS 776.13 DEEP. 2663.83 FROM N 1/4 COR SEC 3 TO NW COR SEC 3.

RYAN COMBS REPORTED THERE WAS A PROBLEM WITH THE ALUM. MONUMENT THAT HE UNCOVERED.

I FOUND THE REFERENCE PIPES ON THE NORTH SIDE OF THE CORNERS AND THE SW REFERENCE PIPE. SINCE MY PORTABLE JACK HAMMER IS IN THE REPAIR SHOP, I DID NOT DIG FOR THE MONUMENTS. THE DISTANCES SHOWN ARE TO RESOLVE HIS ISSUE WITH THE MOST EASTERLY ALUM. MON. THAT HE UNCOVERED. MY NEW TIES SHOULD BE USED ONLY TO LOCATE AND UNCOVER THE EXISTING MONUMENTS. THEY SHOULD NOT BE USED TO ESTABLISH THE POSITIONS OF THE N 1/4 COR OF SEC 3 OR THE S 1/4 COR OF SEC 34. THE ALUM. MONUMENT THAT RYAN UNCOVERED IS NOT A PLSS CORNER BUT COULD EASILY BE MISTAKEN AS ONE.

C) Was the corner restored through acceptance of (1) an obliterated evidence location, or, (2) a found perpetuated location?

THE FD ALUM MON THAT IS 9.2 EAST OF THE S 1/4 COR SEC 34 IS THE LOCATION THAT BATTERMAN CALLS FOR IN 1961 AS THE SOUTHERLY PROJECTION OF THE GEN & N 1/4 COR OF SEC 34. HE FD THE STONE OF RECORD @ THE S 1/4 COR SEC 34 BUT ESTABLISHED THIS POINT AS MATTER OF RECORD.

IT APPEARS THAT IN 1866 LOCKE SUBDIVIDED SEC 3 AND TO ESTABLISH THE POSITION OF THE N 1/4 COR OF SEC 3 HE DIVIDED HIS MEASURED JOG DISTANCE OF 19.8 AT THE NW COR OF SEC 3 BY 2 (9.9). THEN IN 1868 HE SET A OAK STAKE 12.05' WEST OF THE S 1/4 COR SEC 34.

IN 18?? RUGER FOUND THE COR HE SET WHICH WAS A LIMESTONE (BROKEN) AND SURROUNDED BY 2 HH 12.21 WEST OF THE S 1/4 COR SEC 34. HE PLACED A 8X8X24 LIMESTONE SURROUNDED BY 4 LS.

IN 1892 BLEEDORN FOUND THE CORNER & SET A LIMESTONE SURROUNDED BY 4 HH.

IN 1919 AN UNKOWN PERSON CALLS FOR A 7X8X15 LS ON END 12.21 WEST OF S 1/4 COR SEC 34. REFERENCED TO TREE & ELECTRIC POLE.

IN 1932 SUNNY FOUND 7X8X15 LIMESTONE ON END.

IN 1961 BATTERMAN DUG & FOUND A 2" PIPE 12.7 WEST OF A 5X8X5 HH @ THE S 1/4 COR SEC 34.

Emboss Seal
Donald Barnes
6/01/07

SHEET 4 OF 7

CORNER CODE Z-15(1)

IN 1981 BARNES FOUND A 2" PIPE & THE REFERENCE TIES (DID NOT MEASURE TO TIES). REPLACED PIPE WITH ALUM. WHICH IS ON TOP OF STONE OF RECORD. ALSO IN 1981 I FOUND A 9" NAIL @ S 1/4 COR SEC 34. REPLACED NAIL WITH CI, WHICH IS ON TOP OF RECORD STONE.

ACCEPTED ALUM @ N 1/4 COR SEC 3 AND CI AT S 1/4 COR SEC 34, WHICH ARE IN HARMONY WITH BATTERMAN'S 1961 REFERENCE TIES.

D) Describe any material discrepancy between the location of the corner as restored or reestablished and the location of that corner as previously restored or reestablished by distance and direction. Show the discrepancy on the plan view drawing under (a), above. Show the distances between the corner as previously restored or reestablished and (1) the corner as restored or reestablished, and (2) to at least 4 of the witness monuments shown on the drawing in (a), above.

THERE IS NO DISCREPANCY. HOWEVER, ONE SHOULD BE AWARE THERE ARE 2 ALUM. MON. & 1 G.I. MON. THE FARTHEST EAST ALUM. MON IS NOT INTENDED TO BE A 1/4 CORNER, BUT BATTERMAN'S 1961 POINT OF PROJECTING THE GEN & N 1/4 COR OF SEC 34.

(E) Was the corner reestablished through lost corner proportionate methods? If so, show the method, including the directions and distances to other public land survey corners used as evidence or used for proportioning the corner location.

I, **Donald Barnes**, hereby certify that the corner location as identified by the corner code index was determined by me under my direction and control and that this U.S. Public Land Survey Monument Record is correct and complete to the best of my knowledge and belief.

Seal
Donald Barnes

Emboss

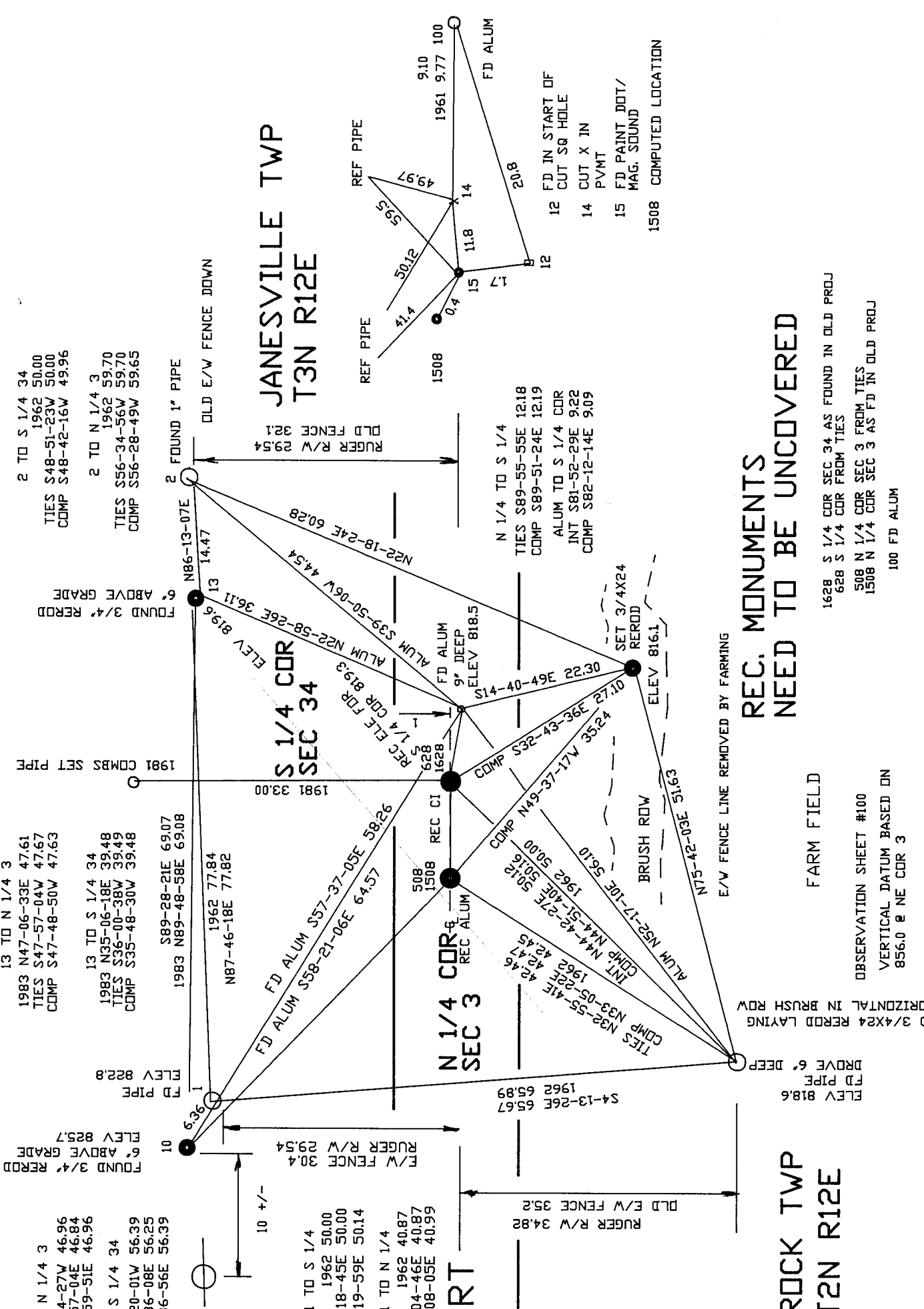
0-01/07

SHEET 5 OF 7

CORNER CODE

Z-15(1)

A.E. 7.08 REQUIREMENT



10 TO N 1/4 3
 1983 N45-44-27W 46.96
 TIES S45-57-04E 46.84
 COMP S45-59-51E 46.96

10 TO S 1/4 34
 1983 N55-20-01W 56.39
 TIES S54-36-08E 56.25
 COMP S54-36-56E 56.39

13 TO N 1/4 3
 1983 N47-06-33E 47.61
 TIES S47-57-04W 47.67
 COMP S47-48-50W 47.63

13 TO S 1/4 34
 1983 N35-06-18E 39.48
 TIES S36-00-38W 39.49
 COMP S35-48-30W 39.48

2 TO S 1/4 34
 1962 50.00
 TIES S48-51-23W 50.00
 COMP S48-42-16W 49.96

2 TO N 1/4 3
 1962 59.70
 TIES S56-34-56W 59.70
 COMP S56-28-49W 59.65

1 TO S 1/4
 1962 50.00
 TIES S53-18-45E 50.00
 COMP S53-19-59E 50.14

1 TO N 1/4
 1962 40.87
 TIES S43-04-46E 40.87
 COMP S43-08-05E 40.99

*Donald
 James
 6/01/07*

EMBOSSED SEAL

JANESVILLE TWP
 T3N R12E

ROCKPORT RD

ROCK TWP
 T2N R12E

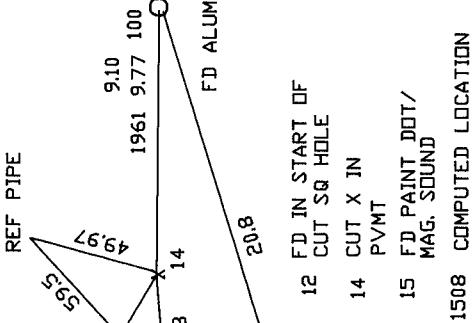
SHEET 6 OF 7

REC. MONUMENTS
 NEED TO BE UNCOVERED

1628 S 1/4 COR SEC 34 AS FOUND IN OLD PROJ
 628 S 1/4 COR FROM TIES
 508 N 1/4 COR SEC 3 FROM TIES
 1508 N 1/4 COR SEC 3 AS FD IN OLD PROJ
 100 FD ALUM

FARM FIELD
 E/W FENCE LINE REMOVED BY FARMING
 OBSERVATION SHEET #100
 VERTICAL DATUM BASED ON
 856.0 @ NE COR 3

7-15(1)



12 FD IN START OF
 CUT SQ HOLE
 14 CUT X IN
 PVMT
 15 FD PAINT DOT/
 MAG. SOUND
 1508 COMPUTED LOCATION

N 1/4 TO S 1/4
 TIES S89-55-55E 12.18
 COMP S89-51-24E 12.19
 ALUM TO S 1/4 COR
 INT S81-52-29E 9.22
 COMP S82-12-14E 9.09

OLD E/W FENCE DOWN
 RUGER R/W 30.4
 RUGER R/W 29.54

2 FOUND 1" PIPE

FOUND 3/4" REROD
 6" ABOVE GRADE

FD PIPE
 ELEV 822.8

FOUND 3/4" REROD
 6" ABOVE GRADE
 ELEV 825.7

FD PIPE
 ELEV 818.6

DRIVE 6" DEEP
 FD PIPE
 ELEV 818.6

SET 3/4X24
 REROD
 ELEV 816.1

9" DEEP
 FD ALUM
 ELEV 818.5

REC ELEV FOR
 S 1/4 COR 819.3

REC CI
 1508

REC ALUM
 508

REC ALUM
 1508

REC ALUM
 508

REC ALUM
 508

REC ALUM
 508

REC ALUM
 508

REC ALUM
 508

REC ALUM
 508

REC ALUM
 508

REC ALUM
 508

REC ALUM
 508

(1) 15-Z

7 FD 7 13EHS

1988 BARNES N88-42-49W 20.04
1975 SPRAGUE N89-02-44E 19.81
1866 LOCKE 19.8
1877 RUGER 19.8
DRIG 33.0

6-01-07
Barnes
SEAL
EMBOSSED
Donald

JANESVILLE 34 TWP
1866 LOCKE VAR 6-50 2657.82
1988 BARNES S89-20-59W 2660.13

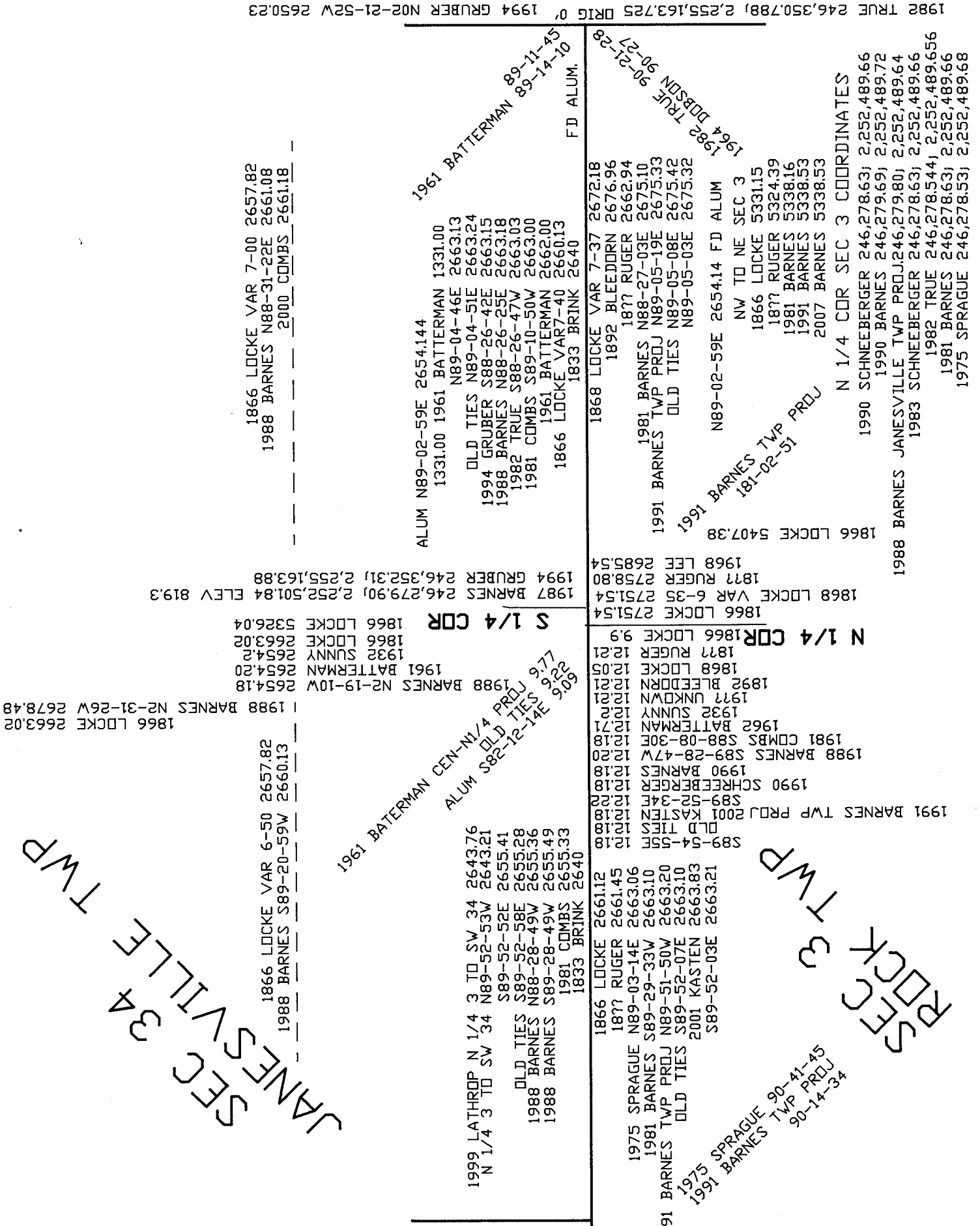
1866 LOCKE 2663.02
1988 BARNES N2-31-26W 2678.48

1988 BARNES N2-19-10W 2654.18
1961 BATTERMAN 2654.20
1932 SUNNY 2664.22
1866 LOCKE 2663.02
1866 LOCKE 5326.04

1987 BARNES 246,279.90; 2,252,501.84 ELEV 819.3
1994 GRUBER 246,352.31; 2,255,163.88

1866 LOCKE VAR 7-00 2657.82
1988 BARNES N88-31-22E 2661.08
2000 COMBS 2661.18

1975 SPRAGUE 246,234.89; 2,249,846.79
1988 BARNES N88-42-49W 20.04
2001 KASTEN 20.05
S88-01-36E 20.01



1982 TRUE 246,350.788; 2,255,163.725 DRIG 0' 1994 GRUBER N02-21-52W 2650.23