

# U.S. PUBLIC LAND SURVEY MONUMENT RECORD

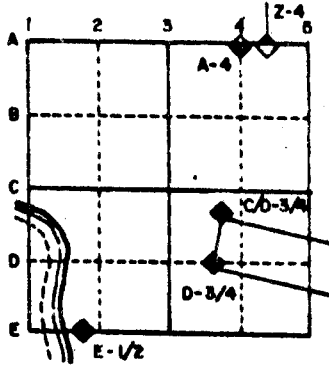
For Public Land Survey Corners in the  
T. 3N., R. 12E.

## CORNER CODE INDEX

	1	2	3	4	5	6	7	8	9	10	11	12	13	14	15	16	17	18	19	20	21	22	23	24	25
A																									
B																									
C	6																								
D		5																							
E			4																						
F				3																					
G					2																				
H																									
I																									
J	7																								
K		8																							
L			9																						
M				10																					
N					11																				
O						12																			
P							13																		
Q								14																	
R									15																
S										16															
T											17														
U												18													
V													19												
W														20											
X															21										
Y																22									
Z																	23								
																		24							
																			25						
																				26					
																					27				
																						28			
																							29		
																								30	
																									31
																									32
																									33
																									34
																									35
																									36

PLACE MONUMENT SYMBOL (◆) AT PROPER LOCATION ON ABOVE INDEX

### EXAMPLE



JANESVILLE TWP  
ROCK COUNTY WI

### IF AVAILABLE STATE PLANE COORDINATES

North (Y) \_\_\_\_\_ Eleve. (Z) \_\_\_\_\_  
 East (X) \_\_\_\_\_ Zone \_\_\_\_\_  
 Hor. Datum \_\_\_\_\_ Vert. Datum \_\_\_\_\_

a.)

◆ CORNER MONUMENT

○ WITNESS MONUMENT

BEARINGS ARE BASED ON:

# MICROFILMED

SHEET \_\_\_ OF \_\_\_

CORNER CODE: X 14

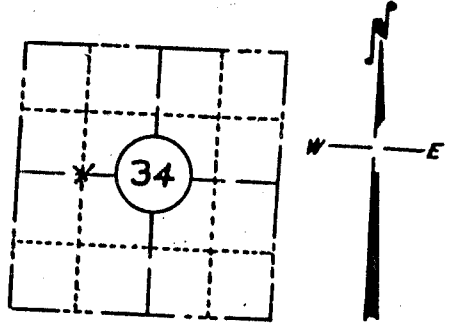
x 14

FORM NO. 710

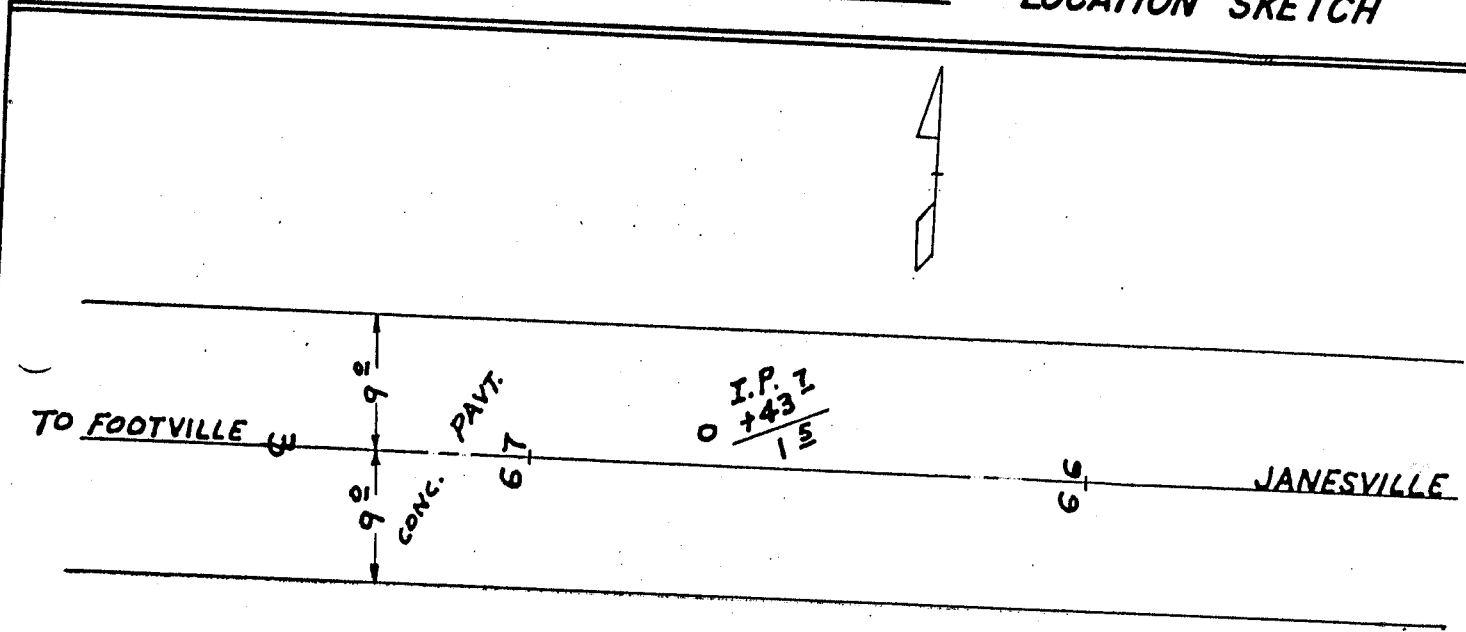
# RESERVATION OF LANDMARKS

PAGE

SECTION 59,635(7) WISCONSIN STATUTES  
 COUNTY ROCK  
 TOWN JANESVILLE  
 HIGHWAY S.T.H #11  
 SECTION NO. 34  
 T. 3 N., R. 12 E.  
 TYPE OF LANDMARK IRON PIN  
 LOCATION INDICATED ON SKETCH X



LOCATION SKETCH



This space for copy of field notes or ties to the above described landmarks

Field notes or records filed in book no. T 030-2 (9)  
 at the Wis. STATE HWY. COMM. DIST. 1 office.  
 City of MADISON, DANE County,  
 Located or established by J.M. HORSEFALL AUGUST, 1956  
 Title \_\_\_\_\_  
 County Clerk's Office \_\_\_\_\_ County, Wis. } ss  
 Received for record \_\_\_\_\_, 19\_\_\_\_\_  
 Copy sent to County Surveyor \_\_\_\_\_, 19\_\_\_\_\_  
 County Clerk \_\_\_\_\_

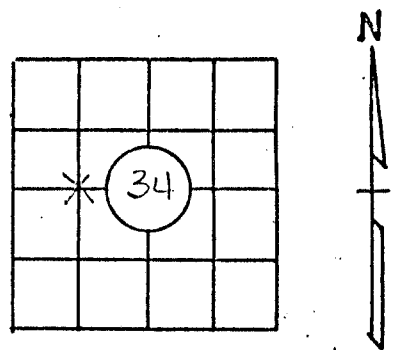
150-151

X 14

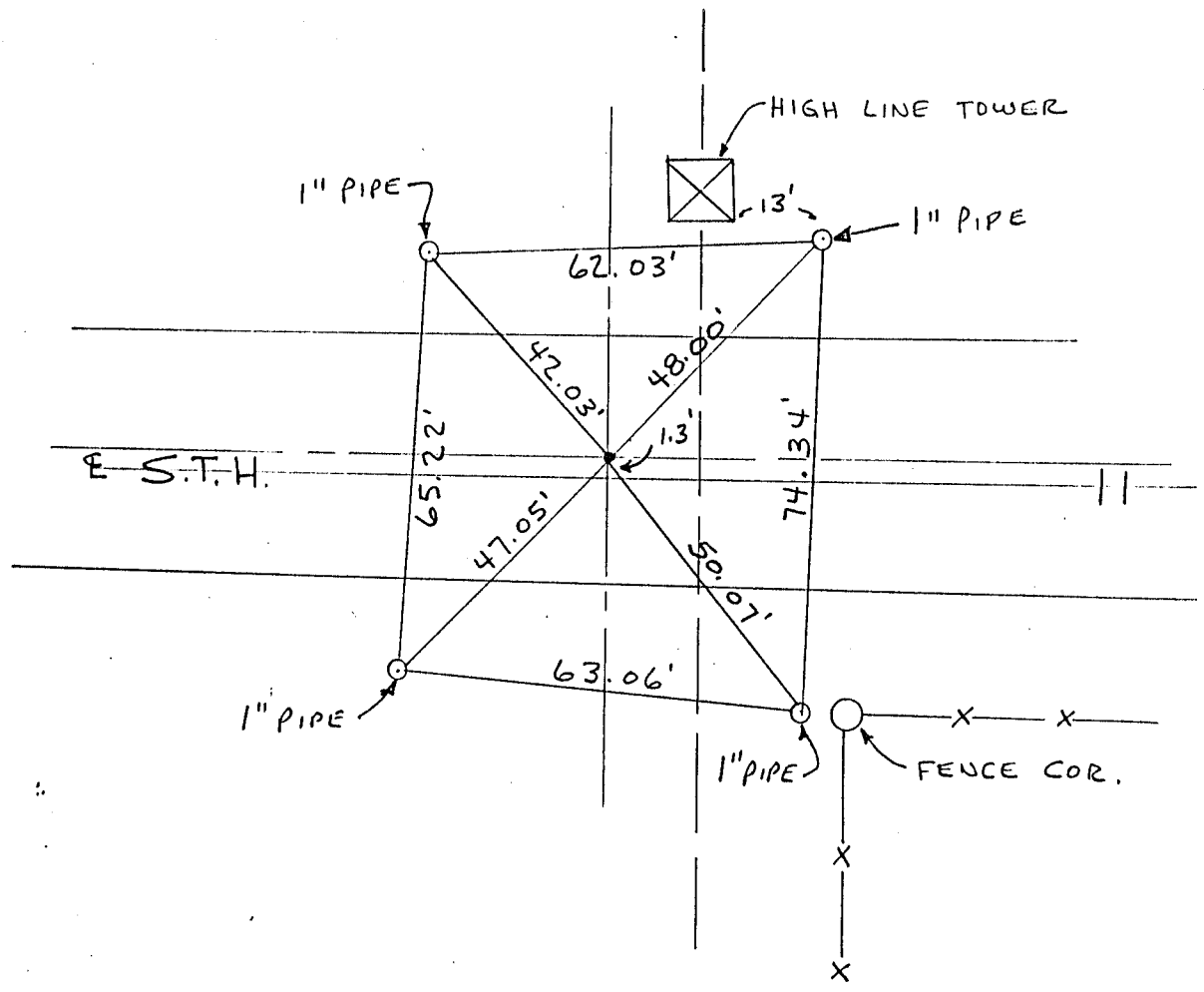
# PRESERVATION OF LANDMARKS

BOOK \_\_\_\_\_ PAGE 4

SECTION 59,635(7) WISCONSIN STATUTES  
 COUNTY Rock  
 TOWN JANESVILLE  
 HIGHWAY S.T.H. 11  
 SECTION NO. 34  
 T. 3 N., R. 12 E.  
 TYPE OF LANDMARK 3/4" IRON PIN  
 LOCATION INDICATED ON SKETCH X



LOCATION SKETCH



Located and referenced by: R.F.B. 3-11, 1970  
 Field notes recorded 3-11, 1970 in Book 152 on Page 25  
 Copy sent to County Surveyor's Office \_\_\_\_\_, 19\_\_\_\_  
 Drawn by: \_\_\_\_\_

150-151

# U. S. PUBLIC LAND SURVEY MONUMENT RECORD

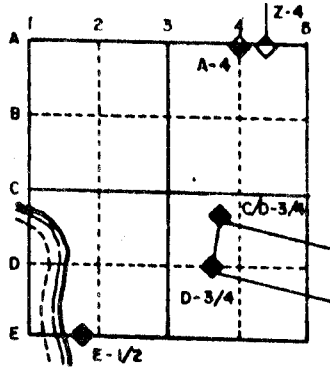
For Public Land Survey Corners in the  
T. 3 N., R. 12 E.

## CORNER CODE INDEX

	1	2	3	4	5	6	7	8	9	10	11	12	13	14	15	16	17	18	19	20	21	22	23	24	25
A																									
B																									
C	6																								
D		5																							
E			4																						
F				3																					
G					2																				
H																									
I																									
J																									
K																									
L																									
M																									
N																									
O																									
P																									
Q																									
R																									
S																									
T																									
U																									
V																									
W																									
X																									
Y																									
Z																									

PLACE MONUMENT SYMBOL (◆) AT PROPER  
LOCATION ON ABOVE INDEX

### EXAMPLE



JANESVILLE TWP  
ROCK COUNTY WI

IF AVAILABLE  
STATE PLANE COORDINATES

North (Y) \_\_\_\_\_ Eleve. (Z) \_\_\_\_\_  
 East (X) \_\_\_\_\_ Zone \_\_\_\_\_  
 Hor. Datum \_\_\_\_\_ Vert. Datum \_\_\_\_\_

(a) ◆ CORNER MONUMENT

○ WITNESS MONUMENT

BEARINGS ARE BASED ON:

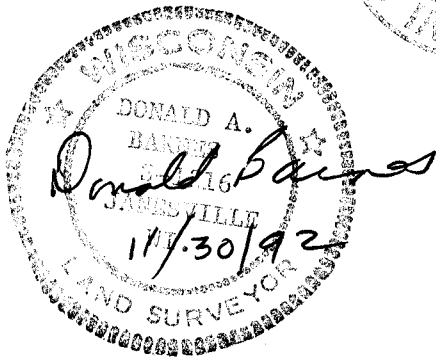
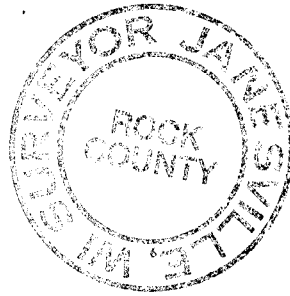
FIELD BOOK \_\_\_\_\_ PAGE # \_\_\_\_\_

MICROFILMED

SHOW A PLAN VIEW DRAWING DEPICTING THE CORNER MONUMENT AND SURROUNDING PHYSICAL FEATURES, INCLUDING THE EXCAVATION AREA AND DEPTH. THE CORNER MONUMENT SHALL HAVE THE FOLLOWING CHARACTERISTICS: 1) HAVE AT LEAST TWO PREDETERMINED BREAK-OFF POINTS. 2) IF BROKEN, LEAVE A PERMANENTLY MAGNETIZED REMNANT AT THE ORIGINAL POINT. 3) MUST BE EXTENDABLE. 4) THE CAP IS INSCRIBED: ROCK COUNTY SURVEY MONUMENT - PENALTY FOR DISTURBING MARKER. 5) OR AN EXISTING CUT LIMESTONE. AN IRON PIPE 1 1/2" x 4'0" (MINIMUM) MAY BE USED IN AREAS WHERE GROUND WATER IS WITHIN ONE FOOT OF THE SURFACE. IF THE CORNER IS OCCUPIED BY AN IMPROVEMENT (MANHOLE, BURIED CABLE, ETC.) ANY DURABLE, DISTINCT MONUMENT MAY BE USED. CORNERS SHALL BE REFERENCED WITH AT LEAST 4 DURABLE WITNESS MONUMENTS. WITNESS MONUMENTS SHALL BE MADE OF CONCRETE, NATURAL STONE, IRON OR OTHER EQUALLY DURABLE MATERIAL, EXCEPT WOOD. DESCRIBE THE CORNER AND THE WITNESS MONUMENTS.

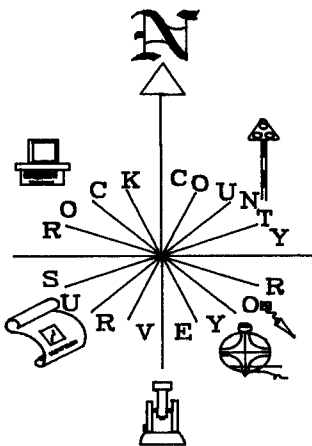
CORNER CODE:

X15(1)



CENTER OF  
SEC 34

WAVELAND



S88-03-09W 111.86  
REC S88-04-36"W 111.86'

N4-05-27E 110.17  
N3-57-09"E 110.17'

REC S48-08-17"E 82.58'  
DISK S47-59-20"E 82.56'

REC N40-30-39"E 77.42'  
DISK N40-40-13E 77.43'

N7-18-09E 117.96  
REC N7-09-36E 117.96

REC FD DISK

STH 11

REC S51-34-50"W 88.19'  
DISK N51-42-18E 88.17

REC N31-27-15"W 68.20'  
DISK S31-19-43E 68.21

S78-21-30E OLD HIGHWAY ANT. REC  
S63-34-46E GM STACK REC  
S35-05-20E WCLD REC

REC S88-09-05"E 104.74'  
N88-00-51W 104.73

DOT 650+05.23 IS 1.98' TO THE WEST

○ FOUND DOT DISK  
IN CONCRETE

X 15(1)