

# U.S. PUBLIC LAND SURVEY MONUMENT RECORD

For Public Land Survey Corners in:

WI ADMINISTRATIVE CODE A-E 7.08 REQUIREMENT

T. 3N., R. 12E

### CORNER CODE INDEX

	2	3	4	5	6	7	8	9	10	11	12	13	14	15	16	17	18	19	20	21	22	23	24	25
A																								
B																								
C	6																							
D																								
E																								
F																								
G	7																							
H																								
I																								
J																								
K	18	17																						
L																								
M																								
N																								
O																								
P	19	20	21																					
Q																								
R																								
S																								
T	30	29	28	27																				
U																								
V																								
W																								
X	31	32	33	34																				
Y																								
Z																								

JANESVILLE TWP  
ROCK COUNTY WI

IF AVAILABLE  
ROCK COUNTY COORDINATES PREFERRED

North \_\_\_\_\_ Elev. \_\_\_\_\_

East \_\_\_\_\_

Hor. Datum \_\_\_\_\_ Vert. Datum \_\_\_\_\_

LATITUDE \_\_\_\_\_ ELLIPS. HT. \_\_\_\_\_

LONGITUDE \_\_\_\_\_

GPS (X) \_\_\_\_\_ TRAVERSE (X) \_\_\_\_\_

BASED ON THE FOLLOWING CONTROL:

PLACE MONUMENT SYMBOL  AT PROPER LOCATION ON ABOVE INDEX

CORNER MONUMENT

WITNESS MONUMENT

BEARINGS ARE BASED ON:

OBSERVATION SHEET

FIELD BOOK \_\_\_\_\_ PAGE # \_\_\_\_\_

SHEET 1 OF 2

SHOW A PLAN VIEW DRAWING DEPICTING THE CORNER MONUMENT AND SURROUNDING PHYSICAL FEATURES, INCLUDING THE EXCAVATION AREA AND DEPTH.

PLANNING & ZONING COMMITTEE ADOPTED THE ABOVE FORM ON 12/2/1982

CORNER CODE C21(1)

JA519

(B) Describe any record evidence, monument evidence, occupational evidence, testimonial evidence or any other material evidence you considered, and whether the monument was found or placed.

1861 RUGER VOL 1 PG 153 USED THE CORNER TO SUBDIVIDE SECTION 2 BUT STATES NOTHING ABOUT CORNER.

1870 RUGER VOL 2 PG 20 FOUND STUMPS OF BTY ALSO FOUND HH STONE ON CORNER

1872 LEE VOL 2 PG 93 FOUND STUMP OF N. BT & HH AT CORNER.

1890 BLEEDHORN VOL 2 PG 438 USED THE CORNER AND REFERS TO PAST PAGES.

1939 SUNNY VOL 3 PG 446 SET 2X36 PIPE

1963 BATTERMAN JR. VOL 4 PG 165 SHOWS PK AND REFERENCES SAME. STATES CORNER IS THE ONE THAT B.JH. SUNNY PLACED.

1987 BARNES C-21 SET ALUMINUM MONUMENT ACCORDING TO TIES.

FOUND ALUM. MON. WHICH DOES NOT CHECK WITH TIES. MON MAY HAVE BROKEN & THE TOP PLACED WITHOUT VERIFYING THE TIES. THE INTERSECTION LOCATION AS SHOWN ON THE DIAGRAM IS THE LOCATION.

C) Was the corner restored through acceptance of (1) an obliterated evidence location, or, (2) a found perpetuated location?

ACCEPTED PERPETUATED LOCATION.

D) Describe any material discrepancy between the location of the corner as restored or reestablished and the location of that corner as previously restored or reestablished by distance and direction. Show the discrepancy on the plan view drawing under (a), above. Show the distances between the corner as previously restored or reestablished and (1) the corner as restored or reestablished, and (2) to at least 4 of the witness monuments shown on the drawing in (a), above.

(E) Was the corner reestablished through lost corner proportionate methods? If so, show the method, including the directions and distances to other public land survey corners used as evidence or used for proportioning the corner location.

I, Donald Barnes, hereby certify that the corner location as identified by the corner code index was determined by me under my direction and control and that this U.S. Public Land Survey Monument Record is correct and complete to the best of my knowledge and belief.

seal  
Donald  
Barnes

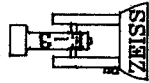
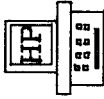
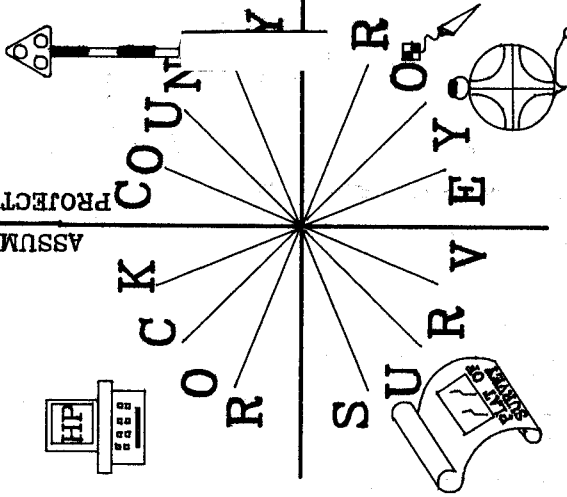
emboss  
May 6, 1999

Number of included sheets 1

CORNER CODE C-21(1)

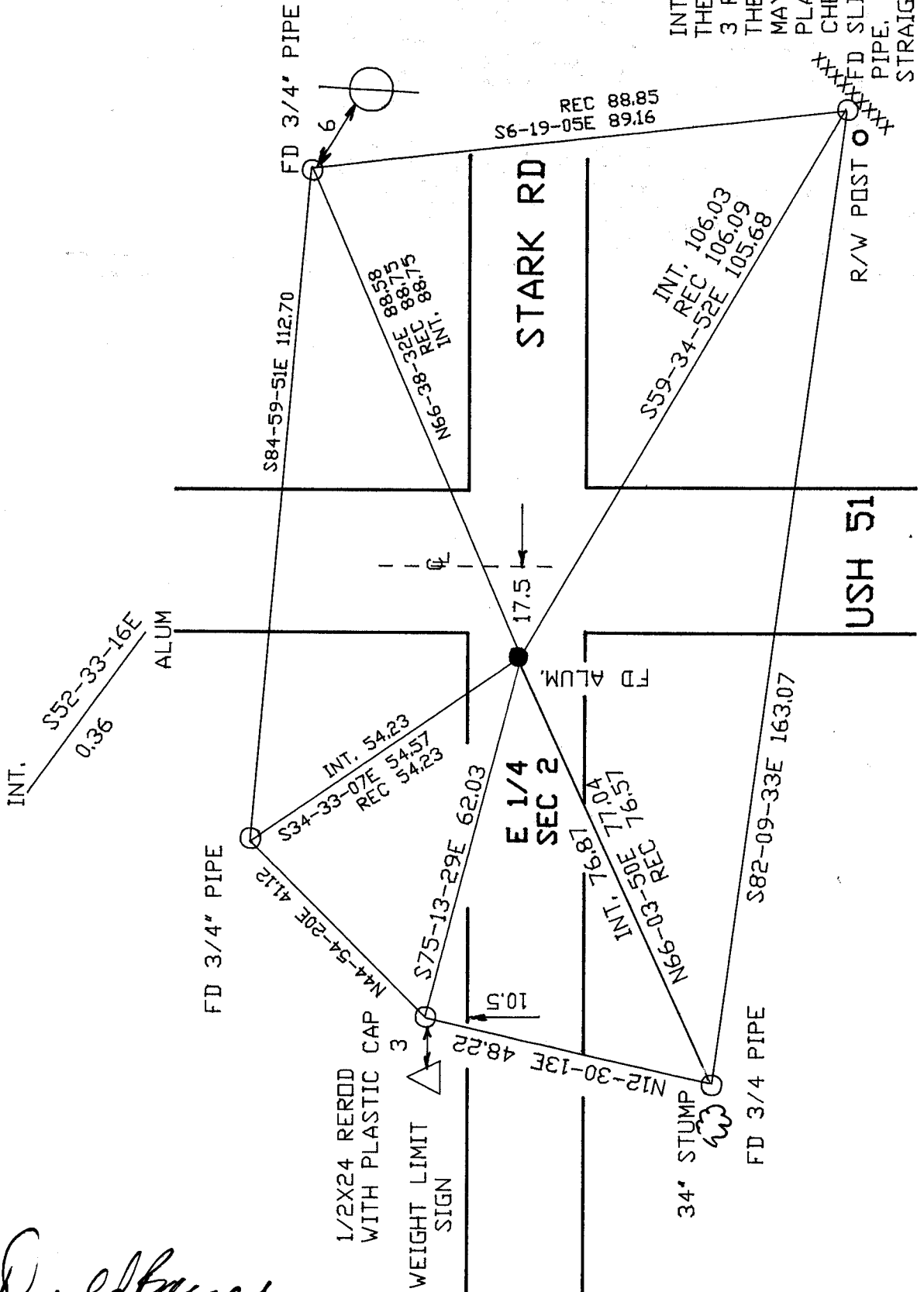
**A**

ASSUMED PROJECTION



OBSERVATION SHEET

INT. IS THE INTERSECTION OF  
THE RECORD DISTANCES OF  
3 REFERENCE MONUMENTS.  
THE FOUND ALUM. MON.  
MAY HAVE BROKE & THE TOP  
PLACED IN WITH OUT  
CHECKING WITH THE TIES.  
FOUND SLIGHTLY BENT  
PIPE. DID NOT  
STRAIGHTEN PIPE



*Donald Barnes*

EMBOSSSED SEAL

May 6, 1899

C-21(1)