

# U.S. PUBLIC LAND SURVEY MONUMENT RECORD

For Public Land Survey Corners in:

WI ADMINISTRATIVE CODE A-E 7.08 REQUIREMENT

T. 2 N., R. 10 E

### CORNER CODE INDEX

A	1	2	3	4	5	6	7	8	9	10	11	12	13	14	15	16	17	18	19	20	21	22	23	24	25
B																									
C	6																								
D																									
E																									
F																									
G	7																								
H																									
J																									
K																									
L	18																								
M																									
N																									
O																									
P	19																								
Q																									
R																									
S																									
T	30																								
U																									
V																									
W																									
X	31																								
Y																									
Z																									

SPRING VALLEY TWP

ROCK COUNTY WI

IF AVAILABLE  
ROCK COUNTY COORDINATES PREFERRED

North \_\_\_\_\_ Elev. \_\_\_\_\_

East \_\_\_\_\_

Hor. Datum \_\_\_\_\_ Vert. Datum \_\_\_\_\_

LATITUDE \_\_\_\_\_ ELLIPS. HT. \_\_\_\_\_

LONGITUDE \_\_\_\_\_

GPS (X) \_\_\_\_\_ TRAVERSE (X) \_\_\_\_\_

BASED ON THE FOLLOWING CONTROL:

PLACE MONUMENT SYMBOL  AT PROPER LOCATION ON ABOVE INDEX

CORNER MONUMENT

WITNESS MONUMENT

(a)

BEARINGS ARE BASED ON: \_\_\_\_\_

FIELD BOOK \_\_\_\_\_ PAGE # \_\_\_\_\_

SHEET 1 OF 2

SHOW A PLAN VIEW DRAWING DEPICTING THE CORNER MONUMENT AND SURROUNDING PHYSICAL FEATURES, INCLUDING THE EXCAVATION AREA AND DEPTH.

PLANNING & ZONING COMMITTEE ADOPTED THE ABOVE FORM ON 12/2/1982

CORNER CODE E-17(1)

SP529

*(B) Describe any record evidence, monument evidence, occupational evidence, testimonial evidence or any other material evidence you considered, and whether the monument was found or placed.*

- 1855 CHURCH VOL 1 PG 43 STAKE CORRECT WITH FIELD NOTES  
1861 RUGER VOL 1 PGT 150 VAR 6-08 2592.48 TO E ¼ COR SEC 3 & VAR 6-08 2341.35 FROM E ¼ COR TO NE CORNERS OF SEC 3.  
1874 RUGER VOL 2 PG 140 FD OLD STAKE & STUMPS OF BTS. DROVE NEW STAKE IN PLACE OF OLD ONE & SURROUNDED IT WITH 3 L.S. & 1 HH. VAR 5-51 2630.76 TO N ¼ COR SEC 11 & VAR 533 2664.42 TO W ¼ COR SEC 11.  
1929 BATTERMAN VOL 3 PG 158 SET G.P. SURROUNDED BY 2 LIMESTONES & REFERENCED SAME.  
1932 SUNNY VOL 3 PG 149 SET 1X36" IRON PIPE 11.3' WEST OF CENTER OF PVMT & REFERENCED SAME. NOTE: THESE MONUMENTS WERE REFERENCED BY BATTERMAN SEP 30, 1929 BEFORE PAVING #92 & RESET BY ME AS SHOWN.  
1986 BARNES E-17 FOUND 1X24" IRON PIPE (BENT) 1' DEEP. 30 INCHES DEEP FOUND PINCHED TOP PIPE. PLACED POLY MON. ON TOP OF PIPE. COR 11.2 WEST OF CENTER OF PVMT ON LINE CENTER PVMT TO WEST. REFERENCED SAME.  
1999 BARNES VOL 6 PG 410 S89-35-26W 2678.24 TO S ¼ COR SEC 3 & N1-30-33E 2658.86 TO E ¼ COR SEC 3

FD POLY MON. 1' EAST OF WEST PVMT EDGE & ON LINE WITH CENTER OF E/W PVMT. MONUMENT IN HARMONY WITH FD REFERENCE MONUMENTS.

*C) Was the corner restored through acceptance of (1) an obliterated evidence location, or, (2) a found perpetuated location?*

ACCEPTED FOUND POLY. MONUMENT.

*D) Describe any material discrepancy between the location of the corner as restored or reestablished and the location of that corner as previously restored or reestablished by distance and direction. Show the discrepancy on the plan view drawing under (a), above. Show the distances between the corner as previously restored or reestablished and (1) the corner as restored or reestablished, and (2) to at least 4 of the witness monuments shown on the drawing in (a), above.*

*(E) Was the corner reestablished through lost corner proportionate methods? If so, show the method, including the directions and distances to other public land survey corners used as evidence or used for proportioning the corner location.*

I, Donald Barnes, hereby certify that the corner location as identified by the corner code index was determined by me under my direction and control and that this U.S. Public Land Survey Monument Record is correct and complete to the best of my knowledge and belief.

Seal

*Donald Barnes*

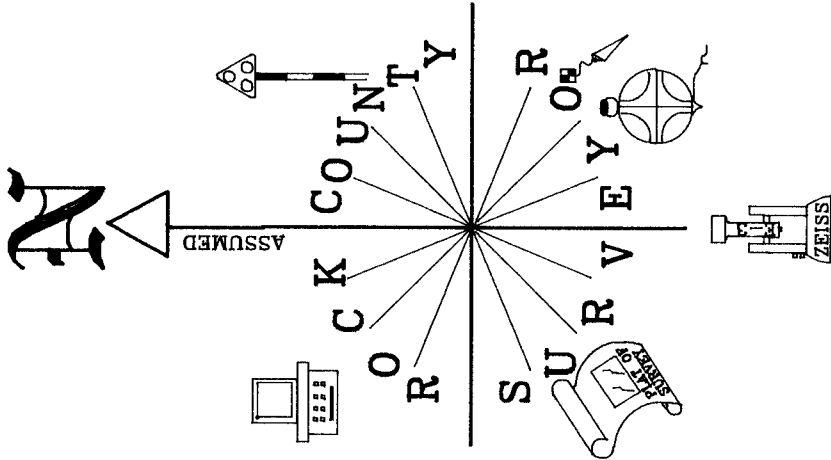
Emboss

*May 15, 2000*

Number of included sheets 1

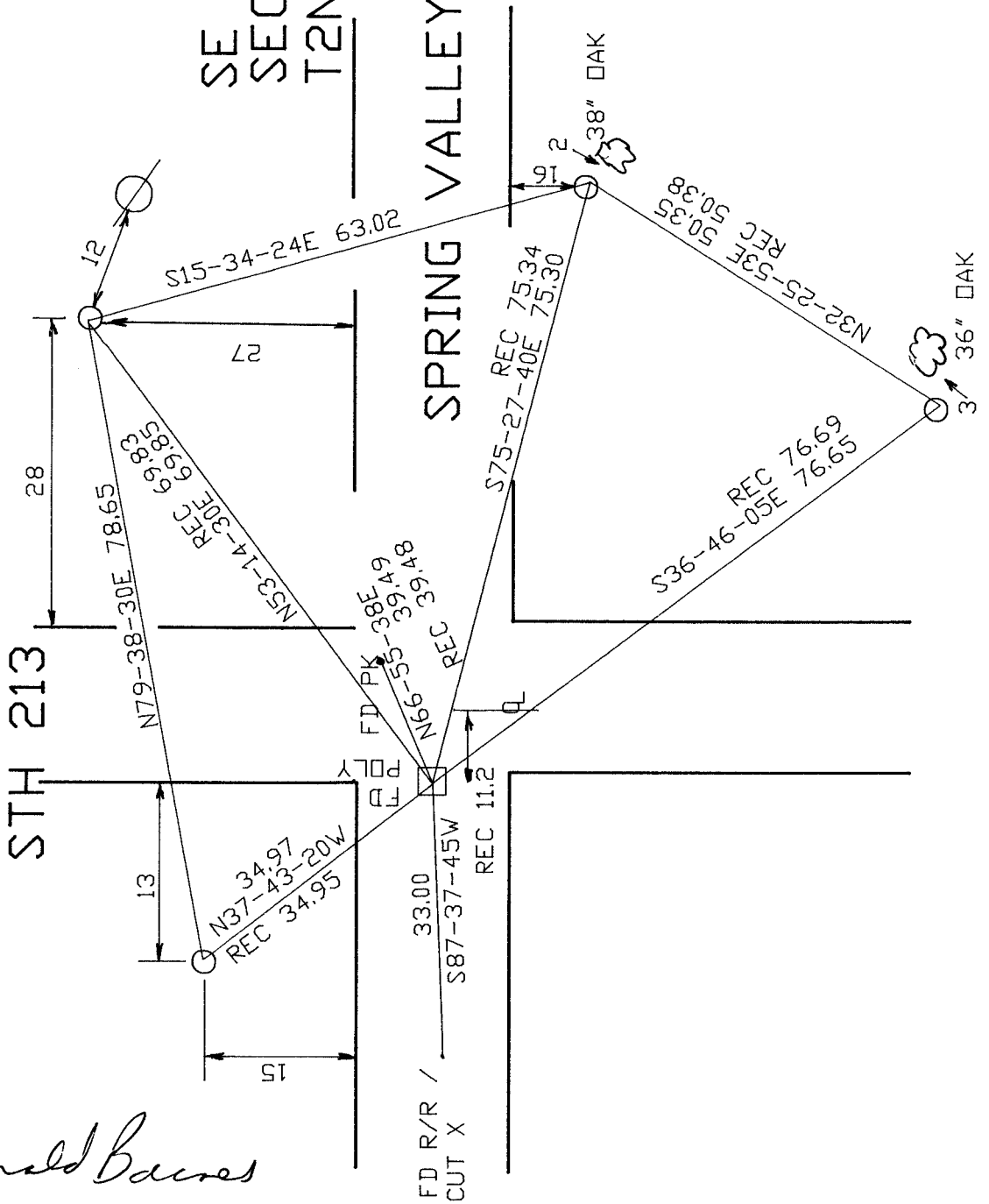
CORNER CODE **E-17(1)**

A-E 7.08 REQUIREMENT



SE COR  
SEC 3  
T2N R10E

SPRING VALLEY CORNERS.



- FD 3/8X24" REROD
- FD POLY MON.
- FB #3 PG 28
- OBSERVATION SHEET

*Donald Barnes*

EMBOSSED  
SEAL

*May 15, 2000*