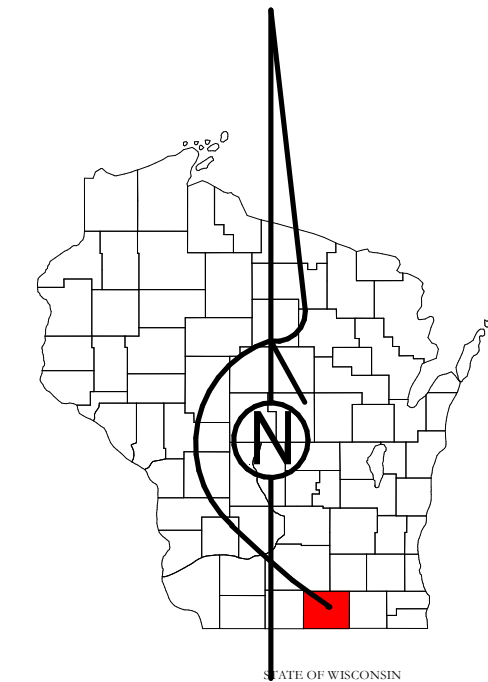


Property Division Map

Town
of
Fulton

T. 4 N. - R. 12 E.

Section 12 SWSW



PREPARED BY

**REAL PROPERTY DESCRIPTION
DEPARTMENT**

USING

**ROCK COUNTY
GEOGRAPHIC INFORMATION SYSTEM**

DUPLICATION OF THIS MAP PROHIBITED
WITHOUT THE WRITTEN CONSENT OF THE
REAL PROPERTY DESCRIPTION DEPARTMENT.

THIS MAP WAS PREPARED PURSUANT
TO SECTION 70.09 WIS. STATS.
USING PUBLIC RECORDS. IT IS NOT INTENDED
TO BE A SUBSTITUTE FOR AN
ACTUAL FIELD SURVEY
AND IS ADVISORY ONLY.

DISTANCES SHOWN ON THIS
MAP WERE PRODUCED BY
THE GIS SYSTEM AND ARE
FOR REFERENCE ONLY.
SEE DOCUMENT OF RECORD
FOR ACTUAL DISTANCE.

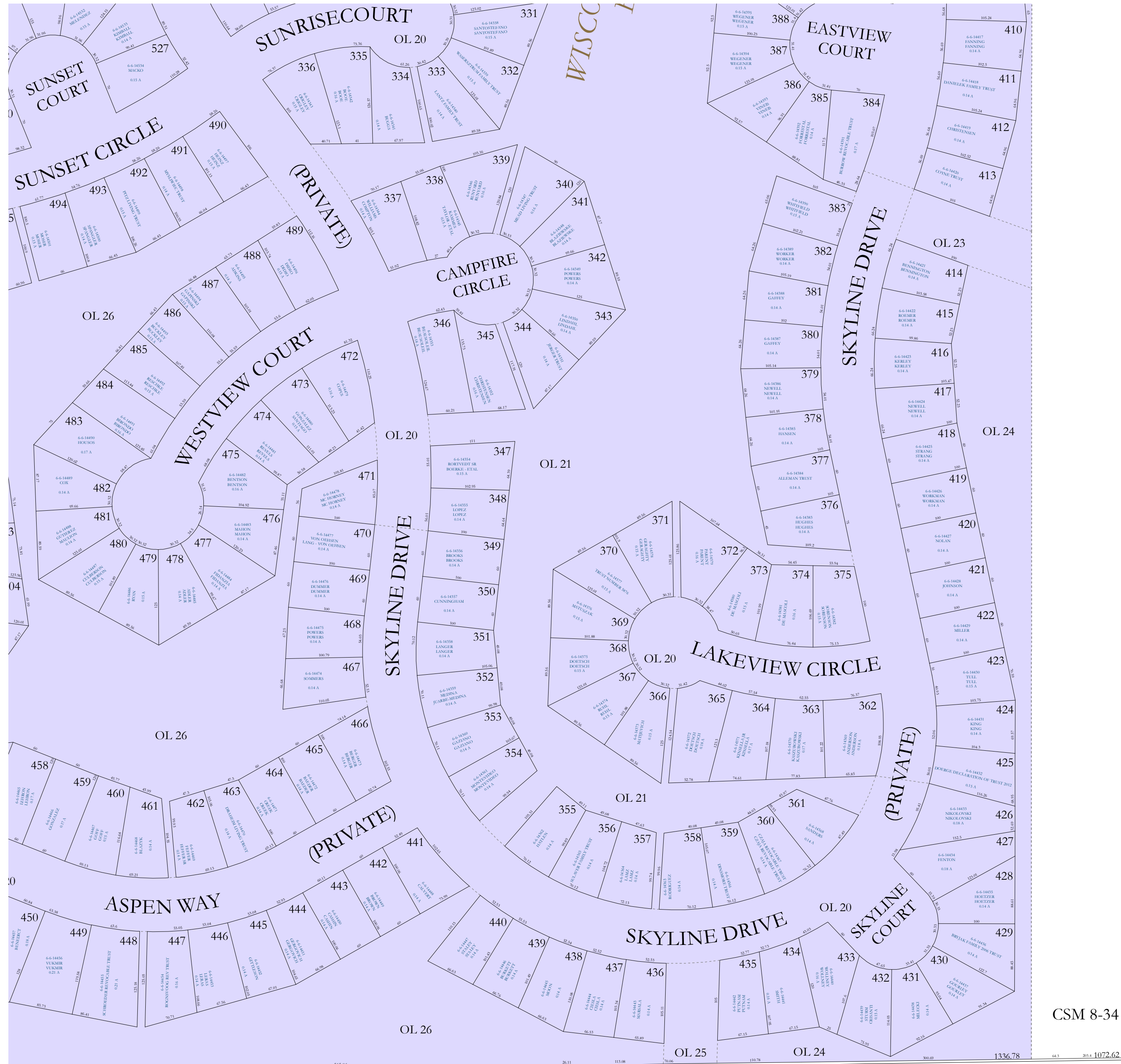
0 12.5 25 50 75 100
Feet

- | | | | |
|--|------------------|--|--------------|
| | Gap | | dam |
| | Overlap | | casement |
| | City of Edgerton | | hydro |
| | CSM | | lots |
| | CSMHYDRO | | parcels |
| | CSMLOT | | parcelshydro |
| | CSMLOTHYDRO | | roadrw |
| | MFL | | |

See Pages

January 1, 2022

12 SWSW



CSM 8-34

6-6-1284 BARKTON 2.53 A
6-6-12211 TOWN OF FULTON 3.83 A
911.65