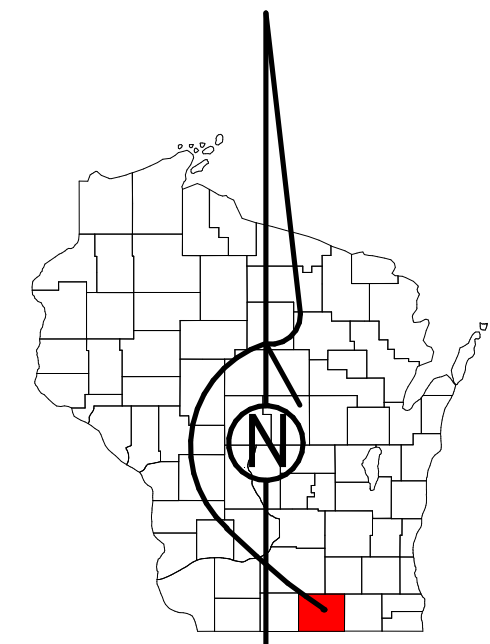


# Property Division Map

City  
of  
Edgerton

T. 4 N. - R. 12 E.  
Section 10 NENW



STATE OF WISCONSIN  
COUNTY OF ROCK

PREPARED BY

REAL PROPERTY DESCRIPTION  
DEPARTMENT

USING

ROCK COUNTY  
GEOGRAPHIC INFORMATION SYSTEM

DUPLICATION OF THIS MAP PROHIBITED  
WITHOUT THE WRITTEN CONSENT OF THE  
REAL PROPERTY DESCRIPTION DEPARTMENT.

THIS MAP WAS PREPARED PURSUANT  
TO SECTION 70.09 WIS. STATS.  
USING PUBLIC RECORDS. IT IS NOT INTENDED  
TO BE A SUBSTITUTE FOR AN  
ACTUAL FIELD SURVEY  
AND IS ADVISORY ONLY.

DISTANCES SHOWN ON THIS  
MAP WERE PRODUCED BY  
THE GIS SYSTEM AND ARE  
FOR REFERENCE ONLY.  
SEE DOCUMENT OF RECORD  
FOR ACTUAL DISTANCE.

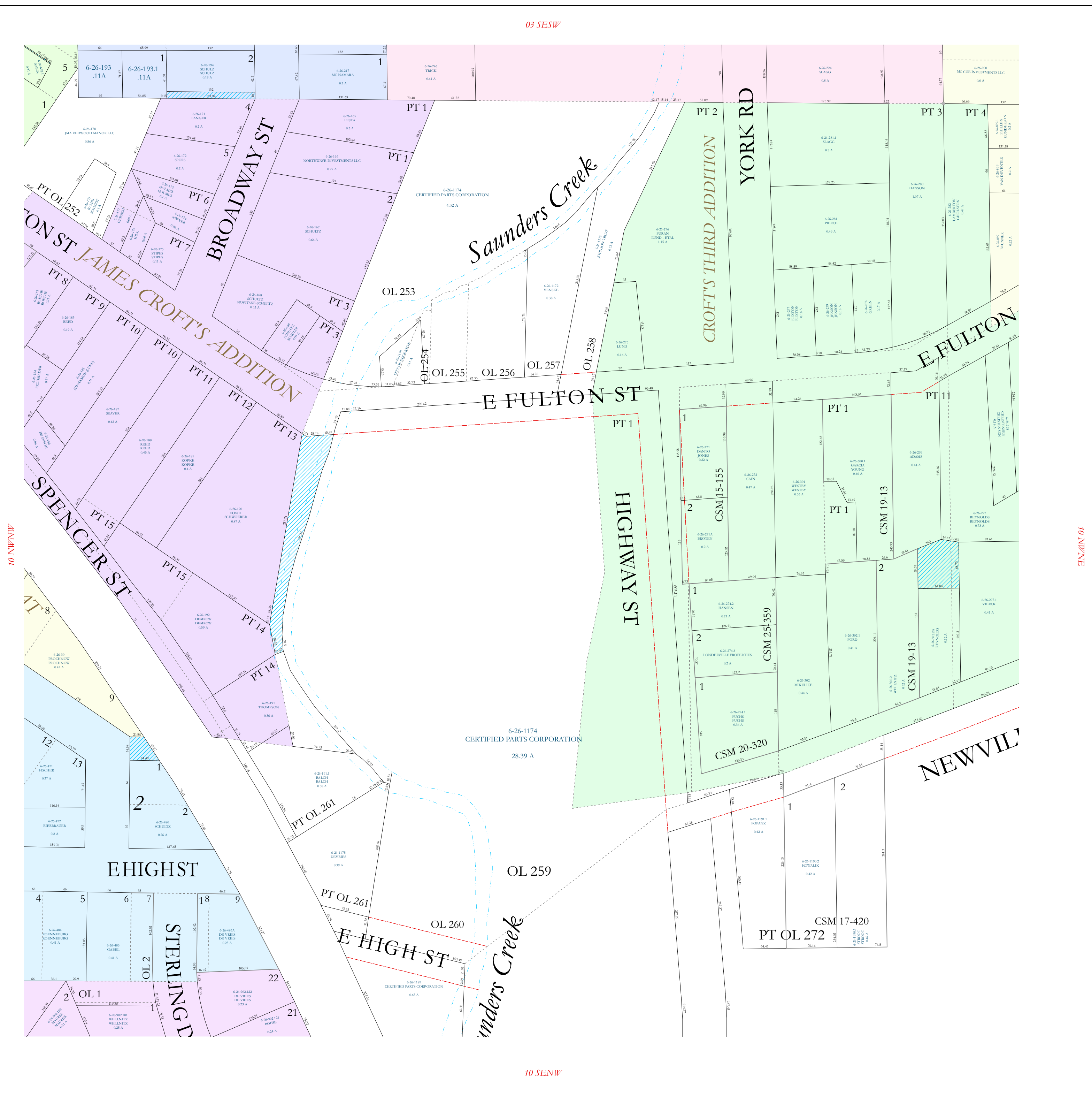
0 12.5 25 50 75 100  
Feet

- Gap
- Overlap
- Town of Fulton
- CSM
- CSMHYDRO
- CSMLOT
- CSMLOTHYDRO
- MFL
- dam
- easement
- hydro
- lots
- parcels
- parcelshydro
- roadwv

See Pages

January 1, 2022

10 NENW



03 SESW

10 NENW

10 SENW