

Paper weight-110# (minimum)

Black nonfading ink required

U.S. PUBLIC LAND SURVEY MONUMENT RECORD

For Public Land Survey Corners In:
T. 4 N. R. 13 E. 4th P.M.
CORNER CODE INDEX

WI ADMINISTRATIVE CODE A-E 7.08 REQUIREMENT
MILTON R.RV 10/23/2004 USMONREC.DWG

A	1	2	3	4	5	6	7	8	9	10	11	12	13	14	15	16	17	18	19	20	21	22	23	24	25	A
B		6			5			4			3			2			1									B
C																										C
D																										D
E																										E
F																										F
G																										G
H																										H
J																										J
K																										K
L																										L
M																										M
N																										N
O																										O
P																										P
Q																										Q
R																										R
S																										S
T																										T
U																										U
V																										V
W																										W
X																										X
Y																										Y
Z																										Z

TWP _____
ROCK COUNTY WI
IF AVAILABLE
ROCK COUNTY COORDINATES PREFERRED

North _____ Elev. _____
East _____
Hor. Datum _____ Vert. Datum _____
LATITUDE _____ ELLIPS. HT. _____
LONGITUDE _____
NAD83(91) _____ NETWORK ADJ. YR 2012
GPS (X) _____ TRAVERSE (X) X
BASED ON THE FOLLOWING CONTROL:
Township Project _____

◆ CORNER MONUMENT ○ WITNESS MONUMENT

(a) BEARINGS ARE BASED ON: ROCK COUNTY PROJECTION

FIELD BOOK _____ PAGE # _____
OR OBSERVATION SHEET _____

SHEET 1 OF 2

SHOW A PLAN VIEW DRAWING DEPICTING THE CORNER MONUMENT AND SURROUNDING PHYSICAL FEATURES, INCLUDING THE EXCAVATION AREA AND DEPTH.
PLANNING & ZONING COMMITTEE ADOPTED THIS FORM ON 12/2/1982

CORNER CODE Z-13(+)

MI627 SWCORSEC34

(B) Describe any record evidence, monument evidence, occupational evidence, testimonial evidence or any other material evidence you considered, and whether the monument was found or placed.

FD PK @ PVMT SURFACE & TOP BROKEN OFF A POLY MON. 0.4'
DEEP. FD SW, SE, & NE REFERENCE PIPES. FD BROKEN POLY MON
@ NE COR SEC 4. PLACED MAGNETS 12" DEEP NEXT TO POLY
MONUMENTS. MONUMENTS ARE 1.5' NORTH OF PVMT CENTER.
MONUMENTS WILL BE DISTURBED BY STH 26 PROJECT.

C) Was the corner restored through acceptance of (1) an obliterated evidence location, or, (2) a found perpetuated location?

ACCEPTED FD POLY MON.

D) Describe any material discrepancy between the location of the corner as restored or reestablished and the location of that corner as previously restored or reestablished by distance and direction. Show the discrepancy on the plan view drawing under (a), above. Show the distances between the corner as previously restored or reestablished and (1) the corner as restored or reestablished, and (2) to at least 4 of the witness monuments shown on the drawing in (a), above.

DID NOT ACCEPT FD PK WHICH IS S12-29W 0.19 OF POLY MON.

(E) Was the corner reestablished through lost corner proportionate methods? If so, show the method, including the directions and distances to other public land survey corners used as evidence or used for proportioning the corner location.

I, **Donald Barnes**, hereby certify that the corner location as identified by the corner code index was determined by me under my direction and control and that this U.S. Public Land Survey Monument Record is correct and complete to the best of my knowledge and belief.

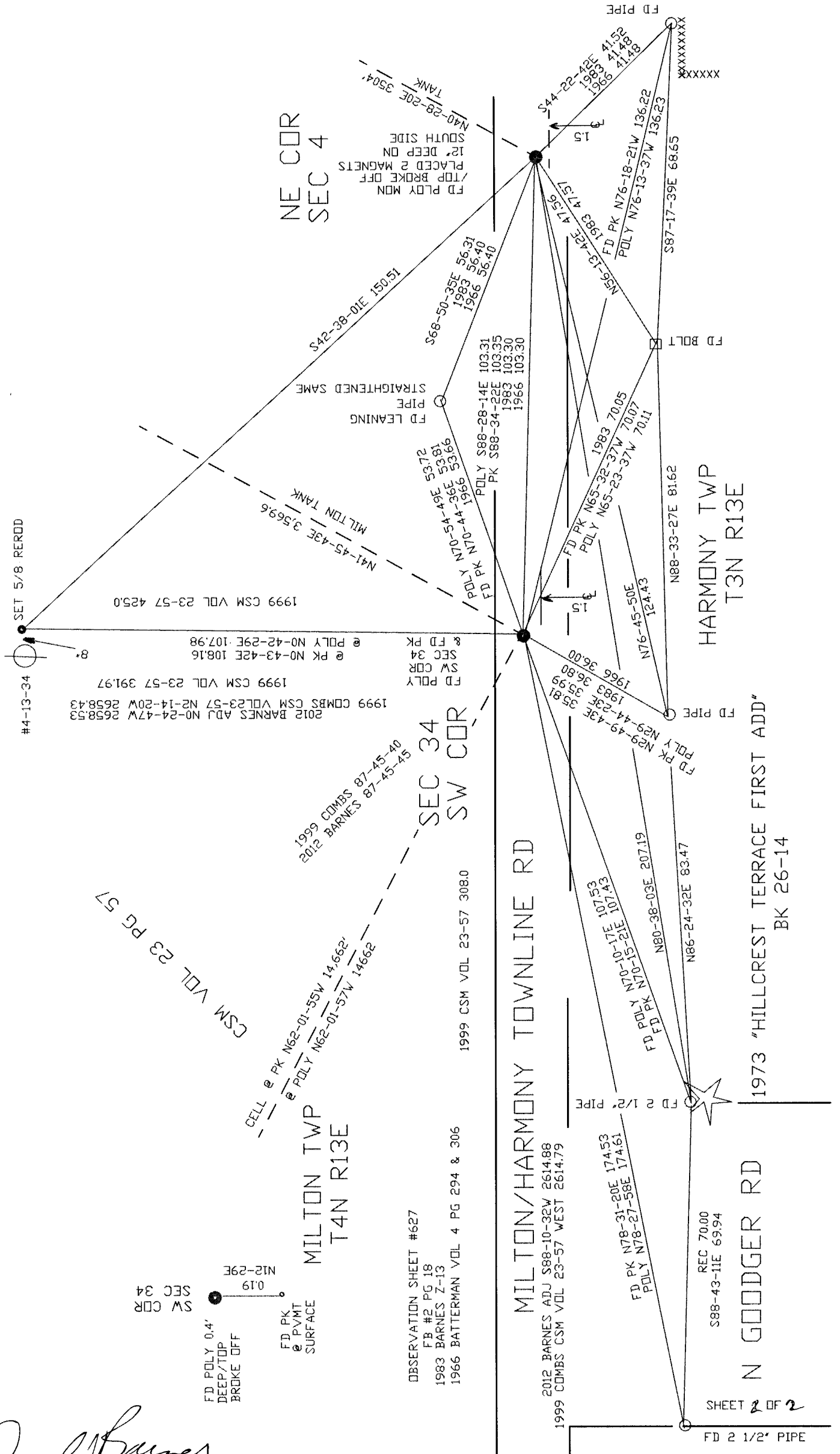
SEAL

SHEET 1 OF 2

Donald Barnes
May 16, 2012

CORNER CODE **Z-13(1)**
A.E. 7.08 REQUIREMENT

Donald Barnes
 May 16, 2012



OBSERVATION SHEET #627
 FB #2 PG 18
 1983 BARNES Z-13
 1966 BATTERMAN VOL 4 PG 294 & 306

SEC 34
 SW COR

NE COR
 SEC 4

MILTON TWP
 T4N R13E

HARMONY TWP
 T3N R13E

MILTON/HARMONY TOWNLINE RD

1973 "HILLCREST TERRACE FIRST ADD"
 BK 26-14

N GOODGER RD

1999 CSM 23-57 33.03

2012 BARNES ADJ S88-10-32W 2614.88
 1999 COMBS CSM VOL 23-57 WEST 2614.79

SHEET 2 OF 2

(1)31-Z