

# U.S. PUBLIC LAND SURVEY MONUMENT RECORD

For Public Land Survey Corners In:

WI ADMINISTRATIVE CODE A-E 7.08 REQUIREMENT

T. 4 N. R. 13 E.

CORNER CODE INDEX

1	2	3	4	5	6	7	8	9	10	11	12	13	14	15	16	17	18	19	20	21	22	23	24	25	
A																									A
B																									B
C																									C
D																									D
E																									E
F																									F
G																									G
H																									H
J																									J
K																									K
L																									L
M																									M
N																									N
O																									O
P																									P
Q																									Q
R																									R
S																									S
T																									T
U																									U
V																									V
W																									W
X																									X
Y																									Y
Z																									Z

MILTON TWP  
ROCK COUNTY WI

IF AVAILABLE  
ROCK COUNTY COORDINATES PREFERRED

North \_\_\_\_\_ Elev. \_\_\_\_\_

East \_\_\_\_\_

Hor. Datum \_\_\_\_\_ Vert. Datum \_\_\_\_\_

LATITUDE \_\_\_\_\_ ELLIPS. HT. \_\_\_\_\_

LONGITUDE \_\_\_\_\_

GPS (X) \_\_\_\_\_ TRAVERSE (X) \_\_\_\_\_

BASED ON THE FOLLOWING CONTROL:

PLACE MONUMENT SYMBOL  AT PROPER LOCATION ON ABOVE INDEX

CORNER MONUMENT

WITNESS MONUMENT

BEARINGS ARE BASED ON: \_\_\_\_\_

FIELD BOOK \_\_\_\_\_ PAGE # \_\_\_\_\_

SHEET 1 OF 2

SHOW A PLAN VIEW DRAWING DEPICTING THE CORNER MONUMENT AND SURROUNDING PHYSICAL FEATURES, INCLUDING THE EXCAVATION AREA AND DEPTH.

PLANNING & ZONING COMMITTEE ADOPTED THE ABOVE FORM ON 12/2/1982

CORNER CODE V-23 (2)

HI612

(B) Describe any record evidence, monument evidence, occupational evidence, testimonial evidence or any other material evidence you considered, and whether the monument was found or placed.

1872 RUGER REMONUMENTATION. PG 276 EAST ON NORTH LINE OF NW 1/4 OF SEC 36 ON A VAR 6-35.

2642.97 INTERSECTED 1/4 LINE 6.6' NORTH OF 1/4 COR FD LIMESTONE AT COR ALSO FD STUMP OF NE BEARING TREE & WHERE STUMP OF S.W. BEARING TREE HAD BEEN DUG UP. COR. VAR 6-26 EAST ON NORTH LINE OF NE 1/4 OF SEC 36 ON A VAR 6-35

2640.82 INTERSECTED EAST BDY LINE 6.6' NORTH OF COR. VAR 6-26

1875 RUGER VOL 2-198 STONE MON. USED COR TO SUBDIVIDE SEC 25. N/S QUARTER LINE VAR 5-42, 2642.31 FROM N 1/4 COR SEC 25 TO CENTER OF SEC 25, 2654.52 FROM W 1/4 COR TO CENTER OF SEC 25.

1899 BROWN VOL 2-509 FD MON. USED TO SUBDIVIDE SEC 36. 2645.94' TO SW COR SEC 25, 2640 TO SE COR SEC 25, 2655.68 FROM W 1/4 TO CENTER OF SEC 25, 2634.06 FROM E 1/4 COR TO CENTER OF SEC 25.

1962 BATTERMAN JR. VOL 4 123 & 590 COR IS 0.2' SOUTH OF CENTER LINE. SET TIES. STATES NOTHING ABOUT MON.

1982 BARNES V-23 FD 1" PIPE 0.2' DEEP & PK @ STA 169+86.39 THAT IS 0.75' TO THE NE. FD OLD TIES. CHECKED DOT TIES WITH PK. FD PK/FLASHER 13.80' TO THE SW. PIPE IS 0.5' SOUTH OF THE CENTERLINE OF PVMT

1983 WIDOT Z-23(1) SET TIES. IRON PIPE, STA 169+85.73 0.36 PERPENDICULAR TO REF LINE (RT) 0.36 IRON PIPE

1983 BARNES REMONUMENTATION PROJECT MAP N89-05-13W 2647.58 TO NW COR SEC 36, 889-24-44E 2642.90 TO NE COR SEC 36.

1983 WIDOT 5TH59 R/W PLANS PROJECT #3143-00-21 SHEET 4.6 IRON PIN 283,322.76; 2,293,709.06 0.36' PERPENDICULAR TO REF LINE AT STA 169+85.73 NO-02-37W

IN SEP 2001 FD TIES BUT NO MON. RD SURFACE WILL BE GROUND AND PAVED WITHIN A FEW MONTHS. IN APRIL 2002 FD TIES & CUT L.S. 2.1' BELOW SURFACE OF PVMT. PLACED 2 MAGNETS & BENT REROD NEAR L.S. PLACED ALUM. SPIKE MON ON TOP OF L.S. FD OLD PVMT 1.2' DEEP.

C) Was the corner restored through acceptance of (1) an obliterated evidence location, or, (2) a found perpetuated location?

ACCEPTED FOUND CUT LIMESTONE.

D) Describe any material discrepancy between the location of the corner as restored or reestablished and the location of that corner as previously restored or reestablished by distance and direction. Show the discrepancy on the plan view drawing under (a), above. Show the distances between the corner as previously restored or reestablished and (1) the corner as restored or reestablished, and (2) to at least 4 of the witness monuments shown on the drawing in (a), above.

I, Donald Barnes, hereby certify that the corner location as identified by the corner code index was determined by me under my direction and control and that this U.S. Public Land Survey Monument Record is correct and complete to the best of my knowledge and belief.

Seal

5-13-2002

Emboss  
Donald Barnes

SHEET 1 OF 2

CORNER CODE

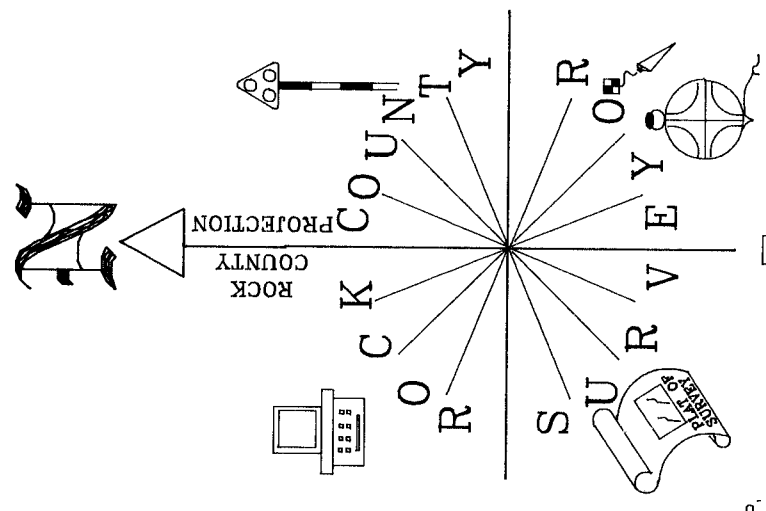
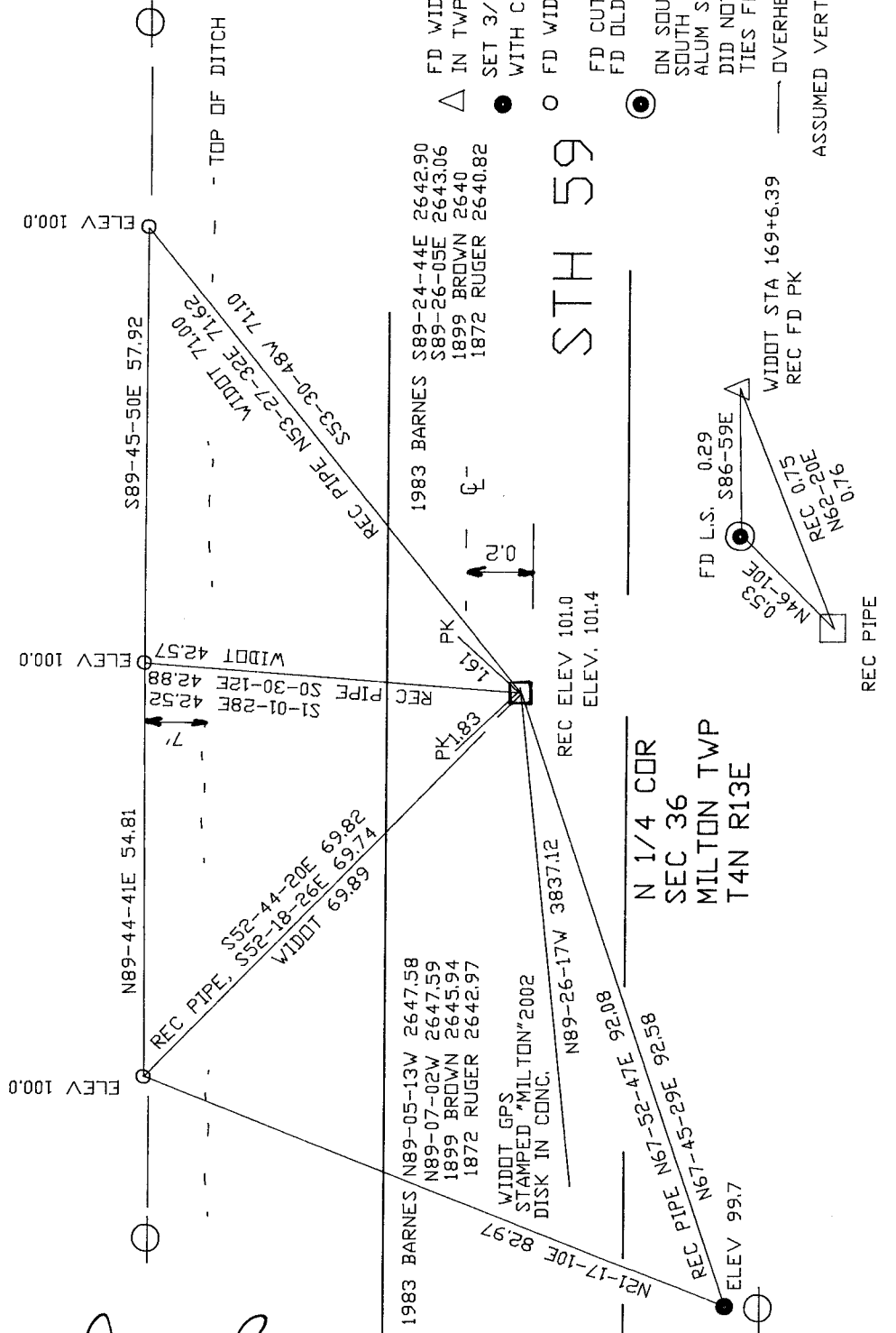
A.E. 7.08 REQUIREMENT

V-23(2)

*Donald Barney*  
 5-13/02

MAP 2 OF 2

V-23(2)



NOT TO SCALE  
 OBSERVATION SHEET #8203M1