

U.S. PUBLIC LAND SURVEY MONUMENT RECORD

For Public Land Survey Corners In:

WI ADMINISTRATIVE CODE A-E 7.08 REQUIREMENT

T. 4 N. R. 13 E.

CORNER CODE INDEX

1	2	3	4	5	6	7	8	9	10	11	12	13	14	15	16	17	18	19	20	21	22	23	24	25	
A																									A
B	6					5				4				3				2			1				B
C																									C
D																									D
E																									E
F																									F
G	7					8				9				10				11			12				G
H																									H
J																									J
K																									K
L	18					17				16				15				14			13				L
M																									M
N																									N
O																									O
P	19					20				21				22				23			24				P
Q																									Q
R																									R
S																									S
T	30					29				28				27				26			25				T
U																									U
V																									V
W																									W
X	31					32				33				34				35			36				X
Y																									Y
Z																									Z

MILTON TWP

ROCK COUNTY WI

IF AVAILABLE
ROCK COUNTY COORDINATES PREFERRED

North _____ Elev. _____

East _____

Hor. Datum _____ Vert. Datum _____

LATITUDE _____ ELLIPS. HT. _____

LONGITUDE _____

GPS (X) _____ TRAVERSE (X) _____

BASED ON THE FOLLOWING CONTROL:

1 2 3 4 5 6 7 8 9 10 11 12 13 14 15 16 17 18 19 20 21 22 23 24 25
PLACE MONUMENT SYMBOL AT PROPER
LOCATION ON ABOVE INDEX

CORNER MONUMENT

WITNESS MONUMENT

(a)

BEARINGS ARE BASED ON: _____

FIELD BOOK _____ PAGE # _____

SHEET 1 OF 3

SHOW A PLAN VIEW DRAWING DEPICTING THE CORNER MONUMENT AND SURROUNDING PHYSICAL FEATURES, INCLUDING THE EXCAVATION AREA AND DEPTH.

PLANNING & ZONING COMMITTEE ADOPTED THE ABOVE FORM ON 12/2/1982

CORNER CODE V-21 (3)

MI611

(B) Describe any record evidence, monument evidence, occupational evidence, testimonial evidence or any other material evidence you considered, and whether the monument was found or placed.

1871 RUGER PG 275 EAST ON NORTH LINE OF NW 1/4 OF SEC 35 ON
A VAR 4-30

2653.53' INTERSECTED 1/4 LINE 4.62' NORTH OF 1/4 COR
FOUND OLD STAKE AT COR ALSO FOUND STUMP OF
BEARING. COR VAR 4-24'

EAST ON NORTH LINE OF NE 1/4 OF SEC 35 ON VAR 5-00

2665.58 INTERSECTED EAST BOUNDARY LINE 6.60'
NORTH OF COR. FOUND LIMESTONE AT COR AND
STUMBS OF NE & SW BEARING TREE. COR VAR 4-51
PG 276 EAST ON NORTH LINE OF NW 1/4 OF SEC 36
ON A VAR 6-35

2642.97 INTERSECTED 1/4 LINE 6.60' NORTH OF 1/4 COR
FOUND LIMESTONE AT COR ALSO FOUND STUMPS
OF SW BEARING TREE HAD BEEN DUG UP COR VAR
6-26

EAST ON NORTH LINE OF NE 1/4 OF SEC 36 ON A VAR 6-35

2640.82 INTERSECTED EAST BOUNDARY LINE 6.60' NORTH OF
COR COR VAR 6-26 AUG 21ST 1871.

PG 288 SOUTH ON WEST LINE OF SW 1/4 OF SEC 25 ON

A VAR 6-45 OFFSET - EAST 5.28' OFFSET WEST 11.88'

2640 LEFT TEMPORARY STAKE AT OFFSET - EAST 66'
OFFSET EAST 132' OFFSET WEST 792'

5295.84 INTERSECTED SOUTH BOUNDARY LINE 6.60' WEST
OF COR COULD FIND NO TRACE OF WEST 1/4 POST.
ESTABLISHED IT FROM SECTION CORNERS. IT BEING
2647.92' DISTANT FROM EACH IN A TRUE LINE
BETWEEN THEM.

PG 289 SOUTH ON WEST LINE NW 1/4 OF SEC 36 ON A
VAR 8-10 AUG 28 1871

2636.04 INTERSECTED 1/4 LINE 3.3' WEST OF 1/4 COR FOUND
OLD STAKE AT COR IT BEING 938.52' DISTANT FROM
STUMP OF BEARING TREE. COR VAR 8-14
SOUTH ON WEST LINE OF SW 1/4 OF SEC 36 ON A VAR 8-
00 OFFSET WEST 10.56'

2656.50 INTERSECTED SOUTH BOUNDARY LINE 9.9' WEST OF
COR. COR VAR 7-59

1928 BATTERMAN VOL 6 PG 298 1332.55 TO S 1/16TH COR OF SE
1/4 OF SEC 26, 322.4 NORTH TO R/R TRACKS, ANGLE
OF 87-24 @ SE COR SEC 26 FROM SOUTH LINE OF SEC 26 TO
E 1/4 COR SEC 26.

1931 SUNNY VOL 3 PG 144 STATES NOTHING ABOUT COR BUT
SHOWS TIES TO T. POLES, FENCE POST, & 28' SOUTH TO GAS
PIPE.

1931 SUNNY VOL 3 PG 198 CALLED FOR SEC 26 BUT PROBABLY
MEANT SEC 27.

1972 NORTHRUP VOL 6 PG 298 2665.70 TO S 1/4 COR SEC 26 &
ANGLE OF 92-49-36 @ S 1/4 COR SEC 26 FROM N/S 1/4 LINE TO
SE COR SEC 26

1973 LEE VOL 4 PG 590 DUG & FD NOTHING

1983 WIDOT STH59 R/W PLANS PROJECT #3143-00-21 SHEET 4.5
CAST IRON MON 283,334.06; 2,291,061.64. 3.15
PERPINDICULAR TO REF LINE @ STA 143+38.15 NO-21-52E

1983 WIDOT STH59 R/W PLANS PROJECT #3143-00-21 SHEET 4.6
CAST IRON MON 283,334.06; 2,291,061.64 3.15'
PERPENDICULAR TO REF. LINE AT STA 143+38.15 NO-21-52E

1983 BARNES VOL 6 PG 298 SHOW RECORD DISTANCES

1983 BARNES V-21 FOUND CUT LIMESTONE 3' DEEP. SET
PK/SHINNER. AREA WILL BE DISTURBED BY 1985 ROAD
CONSTRUCTION PROJECT. ACCEPTED FOUND CUT LIMESTONE.
SHOWS COR 4' SOUTH OF CENTER OF PVMT. ESTABLISHED
TIES & SHOWS TRAVERSE DATA. FD NAIL 3.83' NW OF
LIMESTONE.

1984 BARNES T-21 @ E 1/4 COR SEC 26. SO-40-43E 2651.27 TO SE
COR SEC 26 & NO-31-54W 2651.09 TO NE COR SEC 26.

SHEET 1 OF 3

V-21(3)

5/06/2002

Daniel Barnes

M1611

1985 WIDOT V-21(1) TIES 143+38.15 3.15' PERPENDICULAR TO
REF LINE (RT) (PK). {UNCLEAR IF TIES ARE TO SEC COR OR
STATIONING}
1996 BARNES V-21(2) FD PK & WIDOT TIES.

IN SEP 2001 FD WIDOT REFERENCE PINS BUT NO MON. ROAD
WILL BE GROUND & REPAVED WITHIN THE NEXT FEW MONTHS. IN
APRIL 2002 SET ALUM. MON & 2 MAGNETS @ ABOUT 18" DEEP.
USED TIES. NE REFERENCE MON DID NOT CHECK WITH DISTANCE
TO REFERENCE MON. THAT IS TO THE WEST. POSSIBLY
DISTURBED. DISTANCES ARE IN HARMONY TO MY OLD RECORD
DISTANCES TO THE REMAINING 3 REFERENCE MONUMENTS.

C) Was the corner restored through acceptance of (1) an obliterated evidence location, or, (2) a found perpetuated location?

ACCEPTED FOUND PERPETUATED LOCATION

D) Describe any material discrepancy between the location of the corner as restored or reestablished and the location of that corner as previously restored or reestablished by distance and direction. Show the discrepancy on the plan view drawing under (a), above. Show the distances between the corner as previously restored or reestablished and (1) the corner as restored or reestablished, and (2) to at least 4 of the witness monuments shown on the drawing in (a), above.

(E) Was the corner reestablished through lost corner proportionate methods? If so, show the method, including the directions and distances to other public land survey corners used as evidence or used for proportioning the corner location.

I, Donald Barnes, hereby certify that the corner location as identified by the corner code index was determined by me under my direction and control and that this U.S. Public Land Survey Monument Record is correct and complete to the best of my knowledge and belief.

Seal


Emboss

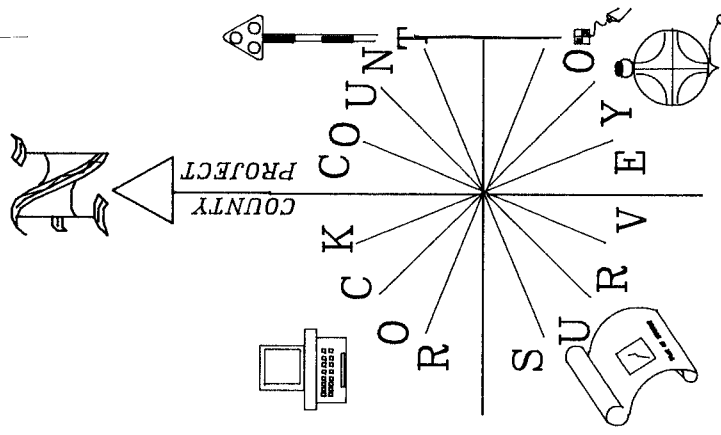
506-2002

SHEET 2 OF 3

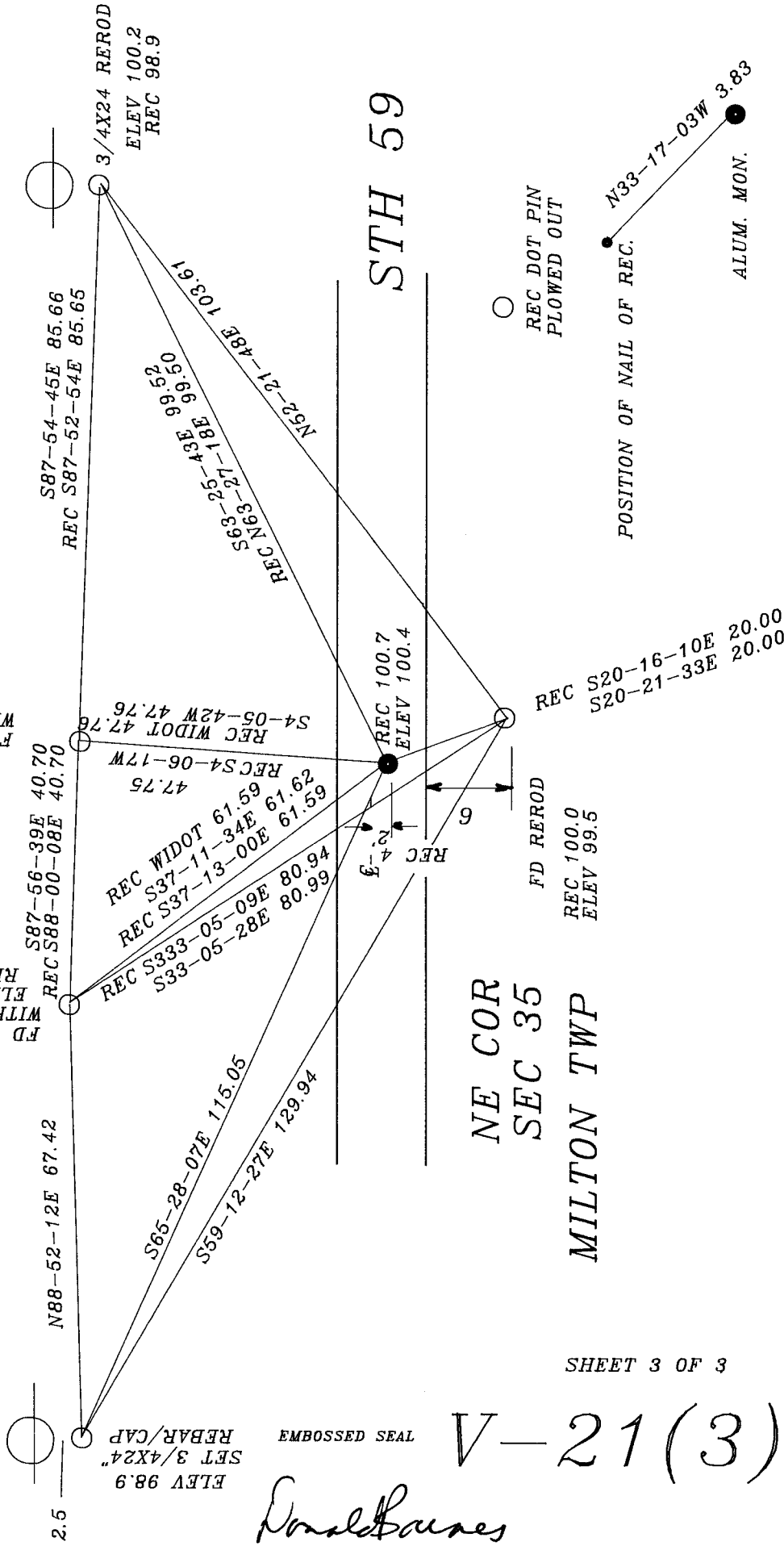
CORNER CODE

A.E. 7.08 REQUIREMENT

V-21(3)



OBSERVATION SHEET #408
 ASSUMED ELEVATION
 SET ALUM. MON
 & 2 MAGNETS
 @ ABOUT 18" DEEP
 ● REC FD NAIL



SHEET 3 OF 3

(3) 12-1

Donald Barnes
 5/06/02

EMBOSS SEAL

SET 3/4X24"
 REBAR/CAP
 ELEV 98.9

2.5