

# U.S. PUBLIC LAND SURVEY MONUMENT RECORD

For Public Land Survey Corners in:

WI ADMINISTRATIVE CODE A-E 7.08 REQUIREMENT

T. 4 N., R. 12 E

### CORNER CODE INDEX

A	1	2	3	4	5	6	7	8	9	10	11	12	13	14	15	16	17	18	19	20	21	22	23	24	25
B																									
C	6						5					A			3				2					1	
D							◆																		
E																									
F							8																		
G	7							9																	
H																									
I																									
J																									
K	18						11																		
L																									
M																									
N																									
O																									
P	19																								
Q																									
R																									
S																									
T	30																								
U																									
V																									
W																									
X	31																								
Y																									
Z																									

FULTON TWP

ROCK COUNTY WI

IF AVAILABLE  
ROCK COUNTY COORDINATES PREFERRED

North \_\_\_\_\_ Elev. \_\_\_\_\_

East \_\_\_\_\_

Hor. Datum \_\_\_\_\_ Vert. Datum \_\_\_\_\_

LATITUDE \_\_\_\_\_ ELLIPS. HT. \_\_\_\_\_

LONGITUDE \_\_\_\_\_

GPS (X) \_\_\_\_\_ TRAVERSE (X) \_\_\_\_\_

BASED ON THE FOLLOWING CONTROL:

PLACE MONUMENT SYMBOL ◆ AT PROPER LOCATION ON ABOVE INDEX

◆ CORNER MONUMENT

○ WITNESS MONUMENT

(a)

BEARINGS ARE BASED ON:

OBSERVATION SHEETS

FIELD BOOK \_\_\_\_\_ PAGE # \_\_\_\_\_

SHEET 1 OF 2

SHOW A PLAN VIEW DRAWING DEPICTING THE CORNER MONUMENT AND SURROUNDING PHYSICAL FEATURES, INCLUDING THE EXCAVATION AREA AND DEPTH.

PLANNING & ZONING COMMITTEE ADOPTED THE ABOVE FORM ON 12/2/1982

CORNER CODE E-7 (2)

FU524

(B) Describe any record evidence, monument evidence, occupational evidence, testimonial evidence or any other material evidence you considered, and whether the monument was found or placed.

- 1871 RUGER VOL 2 PG 57 & 58 FD HH AT COR & REMAINS OF OLD OLD STAKE. ALSO FD WHERE STUMP OF S.E. BEARING TREE HAD BEEN DUG UP & STUMP OF N.W. BEARING TREE. SET HH 20X11X8 SURROUNDED BY 4 HH. 2608.32 TO SE COR SEC 5, 1304.16 TO S 1/16TH COR OF SE 1/4 SEC 5. USED TO SUBDIVIDE SEC 8.
- 1899 BROWN VOL 6 PG 303 2608.32 TO SE COR SEC 5.
- 1966? BATTERMAN JR. VOL 4 PG 279 9"X7" HH UNDER 10" BLKTOP. REFERENCED CORNER. DIAGRAM CALLS FOR 4.5' SOUTH OF CENTER OF PVMT.
- 197? SANDNESS CALLS FOR N/S 304,789.191; E/W 2,240,983.699' ELE 875.40'
- 1983 BARNES VOL 6 PG 303 COMPOSITE OF RECORD DISTANCES. BEARING & DISTANCES ARE COMPUTED FROM WP&L COORDINATES. S88-34-35W 2730.35 TO SW COR SEC 5, N88-53-53E 2615.15 TO SE COR SEC 5, N2-29-26W 2652.52 (COORDINATES) AT CENTER SEC 5, N2-29-25W 2649.19 (INTERSECTION OF 1/4 LINES) @ CENTER SEC 5, 1324.52 (SANDNESS) TO 1/16TH COR TO NORTH, 1328.88 (SANDNESS) FROM E 1/16TH OF SW 1/4 TO CENTER OF SEC 5, 2653.4 (SANDNESS) TO CENTER OF SEC 5, S1-18-29E 2657.70 TO CENTER OF SEC 8.
- 1985 SANDNESS E-7 I FOUND A PK NAIL AT THE SOUTH 1/4 CORNER OF SECTION 5. I FOUND THREE OF THE TIES SHOWN ON TIE SHEET IN THE ROCK COUNTY SURVEYOR OFFICE. THE TIES THAT WERE FOUND ARE AS FOLLOWS: THE 1-1/4" IRON PIPE, THE 1" IRON PIPE, AND THE RAIL ROAD SPIKE IN A TOPPED OFF POWER POLE. (SEE REVERSE SIDE). THE TIE SHEET IN THE ROCK COUNTY SURVEYORS OFFICE SHOWS THAT THE TIES WERE REFERENCED TO A HARD-HEAD AND DOES NOT SHOW WHAT THE CORNER WAS MONUMENTED WITH AFTER THE HARD-HEAD WAS FOUND. THROUGH CHECKING THE TIES I ACCEPTED THE PK NAIL AS REPRESENTING THE S 1/4 OF SECTION 5 AND TIED THE CORNER AS SHOWN ON THE REVERSE SIDE.
- 1991 BARNES E7 FOUND PK & REFERENCE PIPES. DID NOT ACCEPT NOR REJECT FOUND MONUMENT. CORNER REFERENCED FOR ROAD CONSTRUCTION.

FOUND ALUM. MON. WITH TOP BROKE OFF AND REFERENCE MONUMENTS.

C) Was the corner restored through acceptance of (1) an obliterated evidence location, or, (2) a found perpetuated location?

ACCEPTED FOUND PERPETUATED LOCATION.

D) Describe any material discrepancy between the location of the corner as restored or reestablished and the location of that corner as previously restored or reestablished by distance and direction. Show the discrepancy on the plan view drawing under (a), above. Show the distances between the corner as previously restored or reestablished and (1) the corner as restored or reestablished, and (2) to at least 4 of the witness monuments shown on the drawing in (a), above.

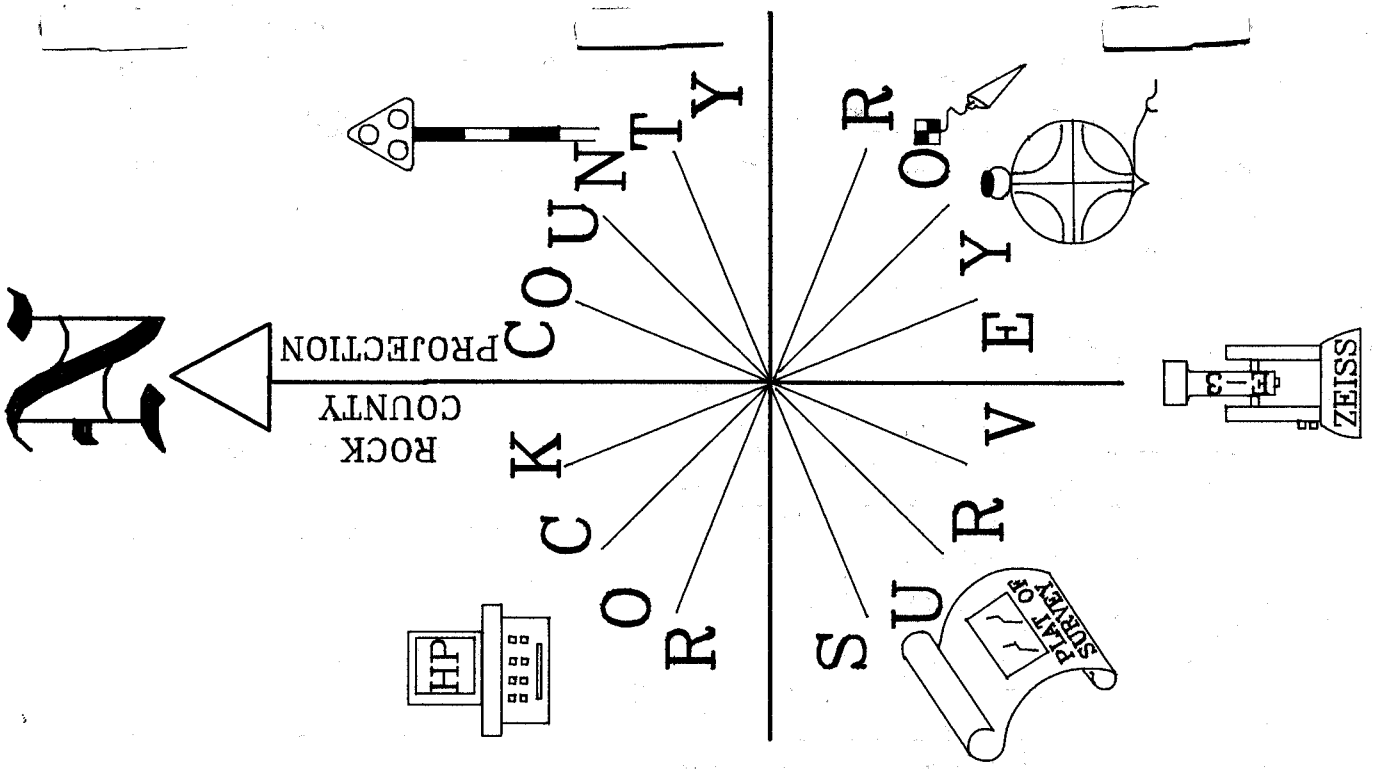
(E) Was the corner reestablished through lost corner proportionate methods? If so, show the method, including the directions and distances to other public land survey corners used as evidence or used for proportioning the corner location.

I, Donald Barnes, hereby certify that the corner location as identified by the corner code index was determined by me under my direction and control and that this U.S. Public Land Survey Monument Record is correct and complete to the best of my knowledge and belief.

seal  
Donald  
Barnes  
emboss  
May 6, 1999

Number of included sheets 1

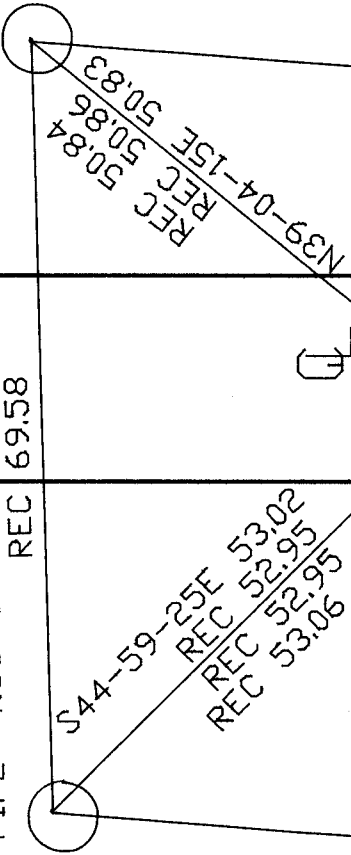
CORNER CODE E-7(2)



DALLMAN RD

FD 1 1/4" PIPE

FD 1' PIPE N88-22-36E REC 69.55  
REC 69.58



S.T.H. 59

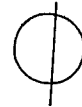
FD PK

S 1/4  
SEC 5

N4-28-15E 84.48  
REC 84.49

N43-19-17E 64.23  
REC 64.24

S38-02-44S 45.06'  
N3-15-36E 75.07



2X3' HIGH  
WOOD POST

FD 3/4" REROD

XXXXXXXXXXXXXXXXXXXX  
 XXXXXXXXXXXXXXX  
 SET 1/2X24 REROD  
 WITH PLASTIC CAP

OBSERVATION SHEET

*Ronald Faenes*

EMBOSSSED SEAL

May 6, 1999

E-7(2)