

Paper weight-110# (minimum)

Black nonfading ink required

U.S. PUBLIC LAND SURVEY MONUMENT RECORD

For Public Land Survey Corners In:

WI ADMINISTRATIVE CODE A-E 7.08 REQUIREMENT

T. 4 N. R. 12 E. 4th P.M.

REV 10/23/2004

USMONREC.DWG

CORNER CODE INDEX

	1	2	3	4	5	6	7	8	9	10	11	12	13	14	15	16	17	18	19	20	21	22	23	24	25		
A																											A
B																											B
C																											C
D																											D
E																											E
F																											F
G																											G
H																											H
J																											J
K																											K
L																											L
M																											M
N																											N
O																											O
P																											P
Q																											Q
R																											R
S																											S
T																											T
U																											U
V																											V
W																											W
X																											X
Y																											Y
Z																											Z

FULTON TWP

ROCK COUNTY WI

IF AVAILABLE
ROCK COUNTY COORDINATES PREFERRED

North _____ Elev. _____

East _____

Hor. Datum _____ Vert. Datum _____

LATITUDE _____ ELLIPS. HT. _____

LONGITUDE _____

NAD83(91) _____ NETWORK ADJ. YR _____

GPS (X) _____ TRAVERSE (X) _____

BASED ON THE FOLLOWING CONTROL:

PLACE MONUMENT SYMBOL AT PROPER LOCATION ON ABOVE INDEX

CORNER MONUMENT

WITNESS MONUMENT

BEARINGS ARE BASED ON: (a) _____

FIELD BOOK _____ PAGE # _____

SHEET 1 OF 2

SHOW A PLAN VIEW DRAWING DEPICTING THE CORNER MONUMENT AND SURROUNDING PHYSICAL FEATURES, INCLUDING THE EXCAVATION AREA AND DEPTH.

PLANNING & ZONING COMMITTEE ADOPTED THIS FORM ON 12/2/1982

CORNER CODE (1-5(2))

FU515^

(B) Describe any record evidence, monument evidence, occupational evidence, testimonial evidence or any other material evidence you considered, and whether the monument was found or placed.

- 1834 (APR 4TH) HARRISON NORTH BETWEEN SECS 5 & 6
1056 POND
1488.96 LEFT SAME EXT. WEST
2640 QUARTER SEC COR {BURR O 18 S45E 81.84' RED O
10 N87E 48.18' BURR O 18, RED O 10} MARKED
3193.08 ENTER MARSH
5271.42 INT. N BDG 66' E OF POST IN MARSH {BURR O 18
S8E 86.46'
LAND & ? ?
- 1865 LOCKE VOL 1 PG 226 & 1065 FD BT S & OLD STAKE. 5373.88
TO W 1/4 COR SEC 6 & 2687.85 TO CENTER SEC 6
- 1976 WPL #1044 ANGLE AT SW COR SEC 5 FROM W 1/16TH COR OF
SW 1/4 OF SEC 5 TO S 1/4 COR SEC 5 IS 89-52-18. BROWN CAP
MON. @ 1/16TH COR
- 1983 BARNES VOL 6 PG 303 307,383.34; 2,238,197.22 S1-1334E
2661.73 TO SW COR SEC 5, N88-51-17E 2671.90 TO INT 1/4
LINES OF SEC 5, 5318.41 TO E 1/4 COR SEC 5, S1-13-34E
1330.86 TO A 2" IP/BRASS CAP @ W 1/16TH COR OF SW 1/4
SEC 5.
- 1983 BARNES C-5 POLY. MON. CARSONITE & REFERENCED. 21 +/-
WEST OF N/S HIGH VOLTAGE TOWERS. SET THE COR ON LINE
WITH THE SW COR OF SEC 5 & THE W 1/16TH COR OF THE SW
1/4 OF SEC 5 AT SINGLE PROPORTIONATE DISTANCE. SEE
COUNTY SURVEYOR'S RECORDS VOL 6 PG 303. 307,383.34
N/S; 2,238,197.22 E/W REF SAME.
- 1985 SANDSNES C-5(1) 1 FD ALUM. CAPPED MON AT THE WEST 1/4
SEC 5 AS SHOWN ON A TIE SHEET., DATED JUNE 21, 1983. I
RETIED THE COR.
- 2007 BATTERMAN REPORTED GPS COORDINATES OF 326,354.33;
469,323.61

FD POLY MON & BUSTED CARSONITE. PLACED NEW CARSONITE.
THE AREA IS DISTURBED.

C) Was the corner restored through acceptance of (1) an obliterated evidence location, or, (2) a found perpetuated location?

ACCEPTED FD PERPETUATED LOCATION.

D) Describe any material discrepancy between the location of the corner as restored or reestablished and the location of that corner as previously restored or reestablished by distance and direction. Show the discrepancy on the plan view drawing under (a), above. Show the distances between the corner as previously restored or reestablished and (1) the corner as restored or reestablished, and (2) to at least 4 of the witness monuments shown on the drawing in (a), above.

(E) Was the corner reestablished through lost corner proportionate methods? If so, show the method, including the directions and distances to other public land survey corners used as evidence or used for proportioning the corner location.

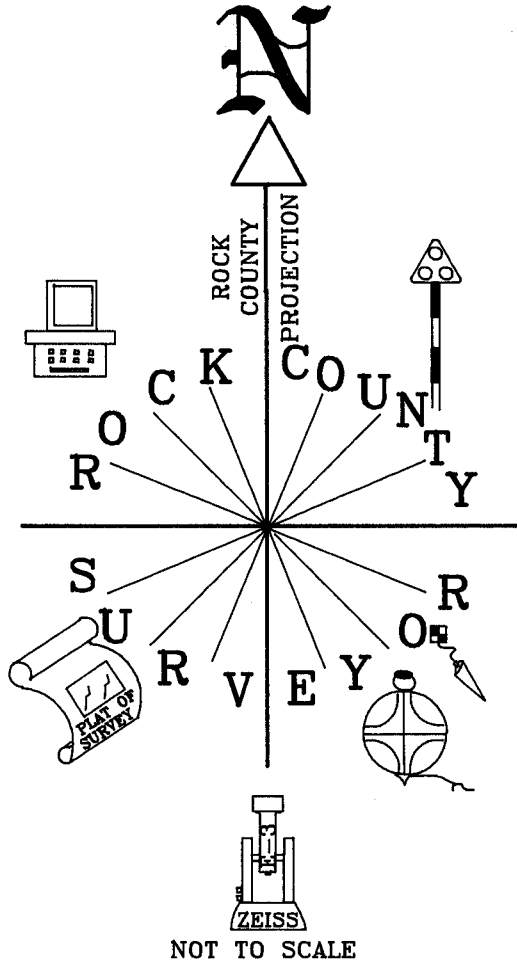
I, **Donald Barnes**, hereby certify that the corner location as identified by the corner code index was determined by me under my direction and control and that this U.S. Public Land Survey Monument Record is correct and complete to the best of my knowledge and belief.

Seal
Donald Barnes
Embress
Barnes
OCT 30, 2007

SHEET 1 OF 2

CORNER CODE **C-5(2)**
A.E. 7.08 REQUIREMENT

W 1/4 COR
 SEC 5
 T4N R12E
 FULTON TWP



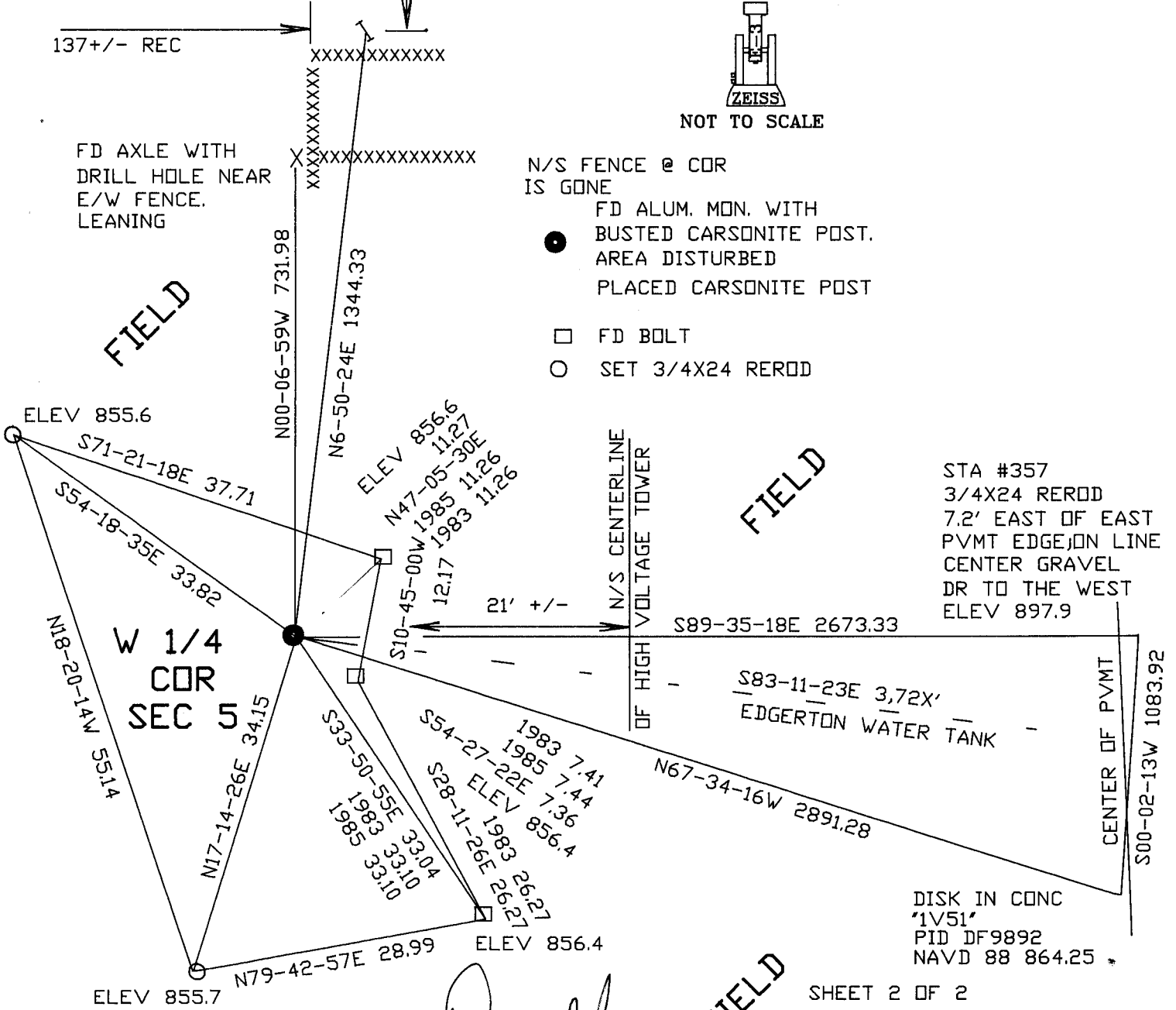
STA #306
 WPL #W4A SET 1-31-1995
 FD T-BAR
 137+/- REC

FD AXLE WITH
 DRILL HOLE NEAR
 E/W FENCE.
 LEANING

N/S FENCE @ COR
 IS GONE

● FD ALUM. MON. WITH
 BUSTED CARSONITE POST.
 AREA DISTURBED
 PLACED CARSONITE POST

□ FD BOLT
 ○ SET 3/4X24 REROD



STA #357
 3/4X24 REROD
 7.2' EAST OF EAST
 PVMT EDGE, ON LINE
 CENTER GRAVEL
 DR TO THE WEST
 ELEV 897.9

DISK IN CONC
 "1V51"
 PID DF9892
 NAVD 88 864.25

EMBOSSED
 SEAL
Randy Banes
 OCT 30
 2007

SHEET 2 OF 2
 C-5(2)