

U.S. PUBLIC LAND SURVEY MONUMENT RECORD

For Public Land Survey Corners In:
T. 4 N. R. 12 E. 4th P.M.
CORNER CODE INDEX

WI ADMINISTRATIVE CODE A-E 7.08 REQUIREMENT
REV 10/23/2004 USMONREC.DWG

FULTON TWP
ROCK COUNTY WI

IF AVAILABLE
ROCK COUNTY COORDINATES PREFERRED

A	2	3	4	5	6	7	8	9	10	11	12	13	14	15	16	17	18	19	20	21	22	23	24	25	A
B	6					5				4				3			2				1				B
C																									C
D																									D
E																									E
F																									F
G	7					8				9			10			11				12					G
H																									H
J																									J
K																									K
L	18					17				16			15			14				13					L
M																									M
N																									N
O																									O
P	19					20				21			22			23				24					P
Q																									Q
R																									R
S																									S
T	30					29				28			27			26				25					T
U																									U
V																									V
W																									W
X	31					32				33			34			35				36					X
Y																									Y
Z																									Z

1 2 3 4 5 6 7 8 9 10 11 12 13 14 15 16 17 18 19 20 21 22 23 24 25
PLACE MONUMENT SYMBOL \blacklozenge AT PROPER LOCATION ON ABOVE INDEX

North _____ Elev. _____

East _____

Hor. Datum _____ Vert. Datum _____

LATITUDE _____ ELLIPS. HT. _____

LONGITUDE _____

NAD83(91) _____ NETWORK ADJ. YR _____

GPS (X) _____ TRAVERSE (X) _____

BASED ON THE FOLLOWING CONTROL:

06/29/2006 15:57 608-267-1540

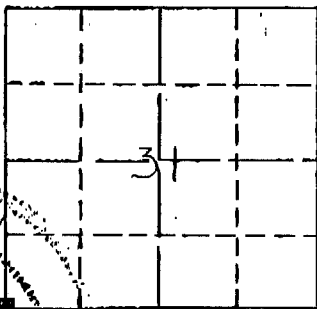
DANE CO PLANNING DEV

PAGE 02/04

GOVERNMENT CORNER REFERENCE

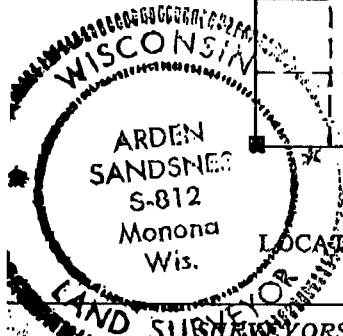
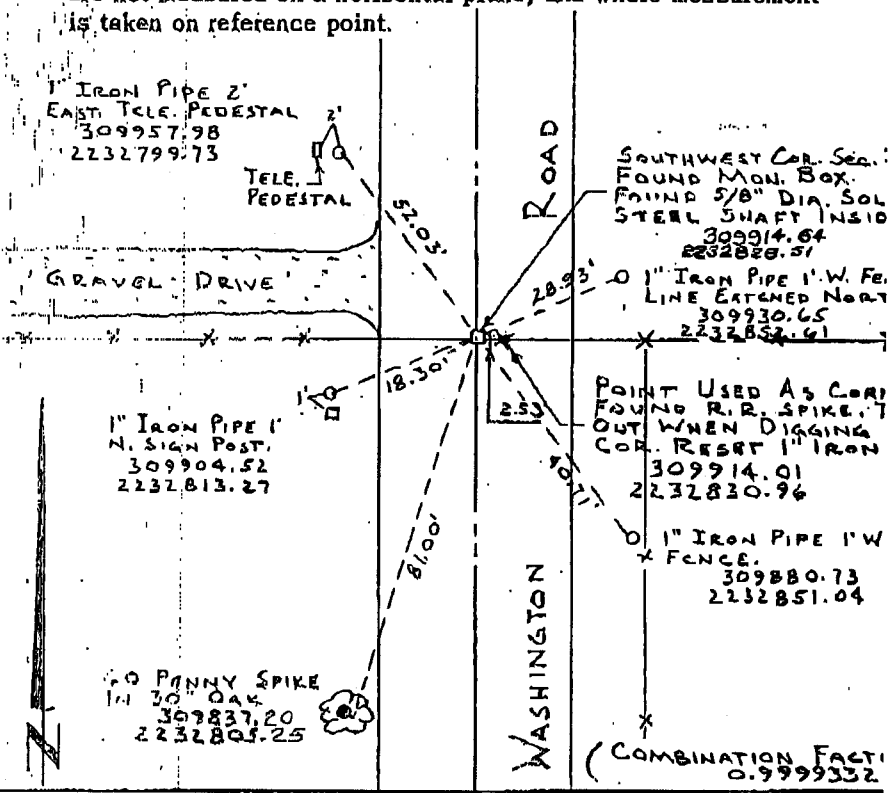
Dane County, Wisconsin

Government corner 31
Township 5 North
Range 12 East
Date of survey 5-14-79
Fieldbook 578 Pg 54



LOCATION SKETCH

This space for drawing of corner showing type of Monument set, distance and direction of reference monument, a note if distances are not measured on a horizontal plane, and where measurement is taken on reference point.



SURVEYORS AFFIDAVIT (Surveyor must certify the method by which the above described corner has been located or relocated.)
STATE OF WISCONSIN } ss
COUNTY OF DANE }

I hereby certify that I HAVE DUG AND FOUND A MONUMENT BOX JUST BELOW THE ROAD SURFACE WITH A 5/8" DIAMETER SOLID STEEL SHAFT INSIDE. CORNER BELIEVED TO HAVE BEEN SET BY ROCK COUNTY.

Arden Sandnes
Registered Land Surveyor - Number S 812

PHYSICAL FEATURES, INCLUDING THE EXCAVATION AREA AND DEPTH.

PLANNING & ZONING COMMITTEE ADOPTED THIS FORM ON 12/2/1982

CORNER CODE A-1(2)

CORNER NUMBER 31