

U.S. PUBLIC LAND SURVEY MONUMENT RECORD

For Public Land Survey Corners in:

WI ADMINISTRATIVE CODE A-E 7.08 REQUIREMENT

T. 4 N., R. 12 E

CORNER CODE INDEX

A	1	2	3	4	5	6	7	8	9	10	11	12	13	14	15	16	17	18	19	20	21	22	23	24	25
B																									
C	6																								
D																									
E																									
F	1																								
G		8																							
H																									
I																									
J																									
K	18																								
L		11																							
M																									
N																									
O																									
P	19																								
Q		20																							
R																									
S																									
T	30																								
U		29																							
V																									
W																									
X	31																								
Y		32																							
Z																									

FULTON TWP
ROCK COUNTY WI

IF AVAILABLE
ROCK COUNTY COORDINATES PREFERRED

North _____ Elev. _____

East _____

Hor. Datum _____ Vert. Datum _____

LATITUDE _____ ELLIPS. HT. _____

LONGITUDE _____

GPS (X) _____ TRAVERSE (X) _____

BASED ON THE FOLLOWING CONTROL:

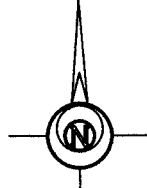
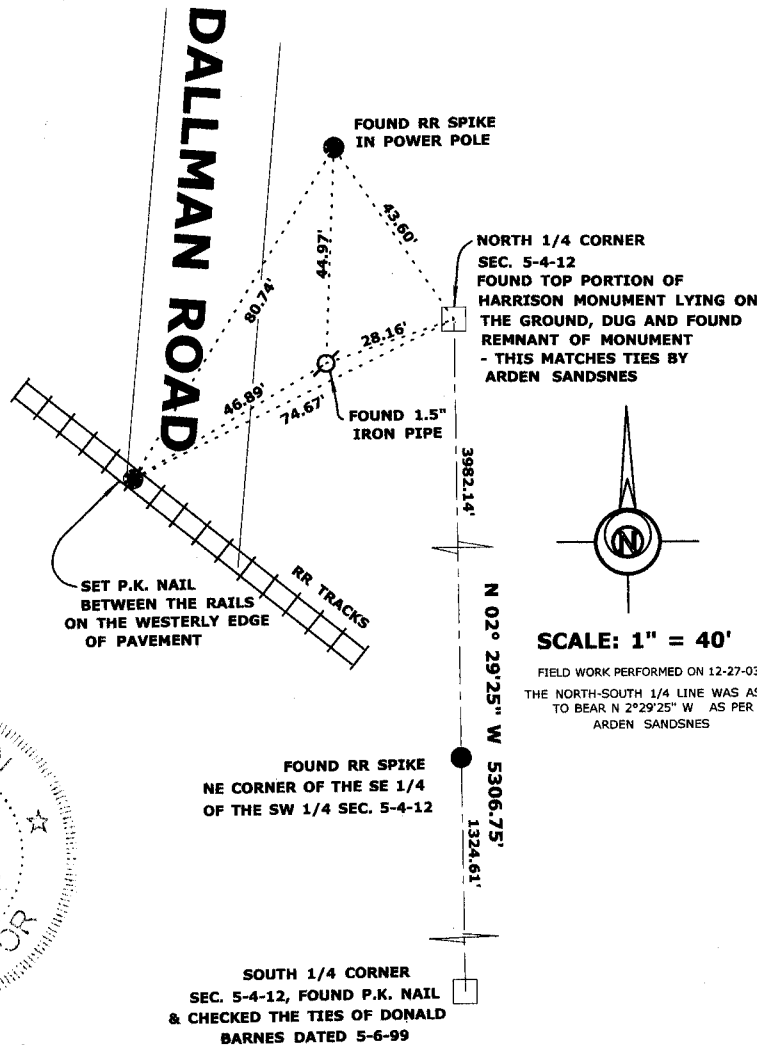
PLACE MONUMENT SYMBOL \blacklozenge AT PROPER LOCATION ON ABOVE INDEX

\blacklozenge CORNER MONUMENT \circ WITNESS MONUMENT

(a)

TIE SHEET FOR THE NORTH 1/4 CORNER SECTION 5, TOWN 4 NORTH, RANGE 12 EAST TOWN OF FULTON, ROCK COUNTY, WISCONSIN

BEARINGS ARE BASED ON:



SCALE: 1" = 40'
FIELD WORK PERFORMED ON 12-27-03
THE NORTH-SOUTH 1/4 LINE WAS ASSUMED TO BEAR N 2°29'25" W AS PER ARDEN SANDSNES



Mark L. Miritz
3/30/04

FIELD BOOK _____ PAGE # _____

SHEET 1 OF 1

SHOW A PLAN VIEW DRAWING DEPICTING THE CORNER MONUMENT AND SURROUNDING PHYSICAL FEATURES, INCLUDING THE EXCAVATION AREA AND DEPTH.

PLANNING & ZONING COMMITTEE ADOPTED THE ABOVE FORM ON 12/2/1982

CORNER CODE A-7 (2)