

U.S. PUBLIC LAND SURVEY MONUMENT RECORD

For Public Land Survey Corners in the

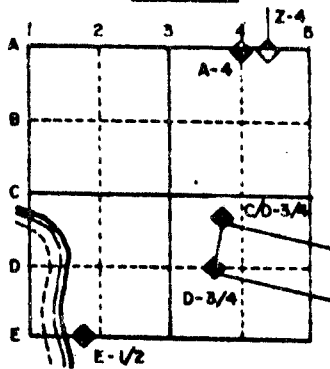
T. 45 N., R. 13 E.

CORNER CODE INDEX

	1	2	3	4	5	6	7	8	9	10	11	12	13	14	15	16	17	18	19	20	21	22	23	24	25
A																									
B																									
C	6																								
D		5																							
E			4																						
F				3																					
G					2																				
H																									
I	7																								
J		8																							
K			9																						
L				10																					
M					11																				
N						12																			
O							13																		
P								14																	
Q									15																
R										16															
S											17														
T												18													
U													19												
V														20											
W															21										
X																22									
Y																	23								
Z																		24							
																			25						
																				26					
																					27				
																						28			
																							29		
																								30	
																									31
																									32
																									33
																									34
																									35
																									36

PLACE MONUMENT SYMBOL (◆) AT PROPER LOCATION ON ABOVE INDEX

EXAMPLE



KOSHKONOG
MILTON TWP
ROCK COUNTY WI

IF AVAILABLE STATE PLANE COORDINATES

North (Y) _____ Eleve. (Z) _____
 East (X) _____ Zone _____
 Hor. Datum _____ Vert. Datum _____

0.)

◆ CORNER MONUMENT

○ WITNESS MONUMENT

BEARINGS ARE BASED ON:

MICROFILMED

SHEET 1 OF 1

FILE IN MILTON A23(2)

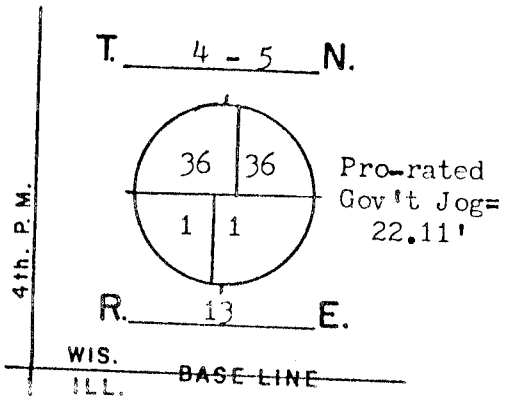
CORNER CODE: A-23-2-23

GOVERNMENT LAND CORNER RECORD

JEFFERSON COUNTY

CORNER NO. 44

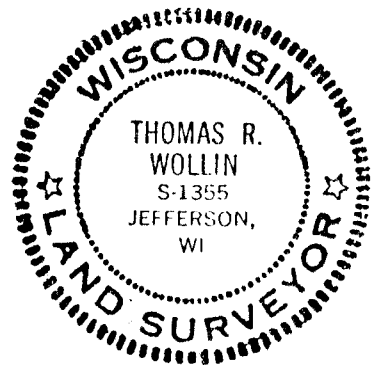
TYPE OF MONUMENT Aluminum & Plastic
 STATE PLANE COORDINATES N.
E.
 ELEVATION M.S.L. DATUM: _____
 THETA ANGLE _____
 FIELD BOOK Koshkonong p. 207
 DRAWN BY TRW



BASIS FOR MONUMENTATION

Original Survey, 1834-37, Wood Post & Bearing Trees
 1871, 1886 Resurveys of Milton & Koshkonong Townships,
 Limestone Monuments, approx. 5" square by 36" long
 were set for respective corners from original corner
 evidence of S $\frac{1}{4}$ -36. Milton notes recorded with Rock
 County Register of Deeds, and Koshkonong Notes recorded
 in Misc. Vol. 1 pages 389-412, Jeff. Co. Reg. of Deeds.
 1972, Stones were dug for with Backhoe, but were not
 found because of large road cut in corner area. Corner
 positions were established by Otto Schroeder, RLS,
 using 1921 Survey by Alex Ely, Rock Co. Surveyors office.
 In 1974, I set iron pipe at each corner using Schroeders
 positions. Iron pipes were subsequently replaced with
 Aluminum Monuments in 1980 & 1983.
 1988, Corner positions challenged by Rock Co. Surveyor
 Don Barnes, RLS, See Attached Tie sheets, I agreed
 with his findings and removed monument to S $\frac{1}{4}$ -36 and
 reset it on Townline established by Barnes and at
 proportionate measurement to Koshkonong Resurvey Notes

SEAL:

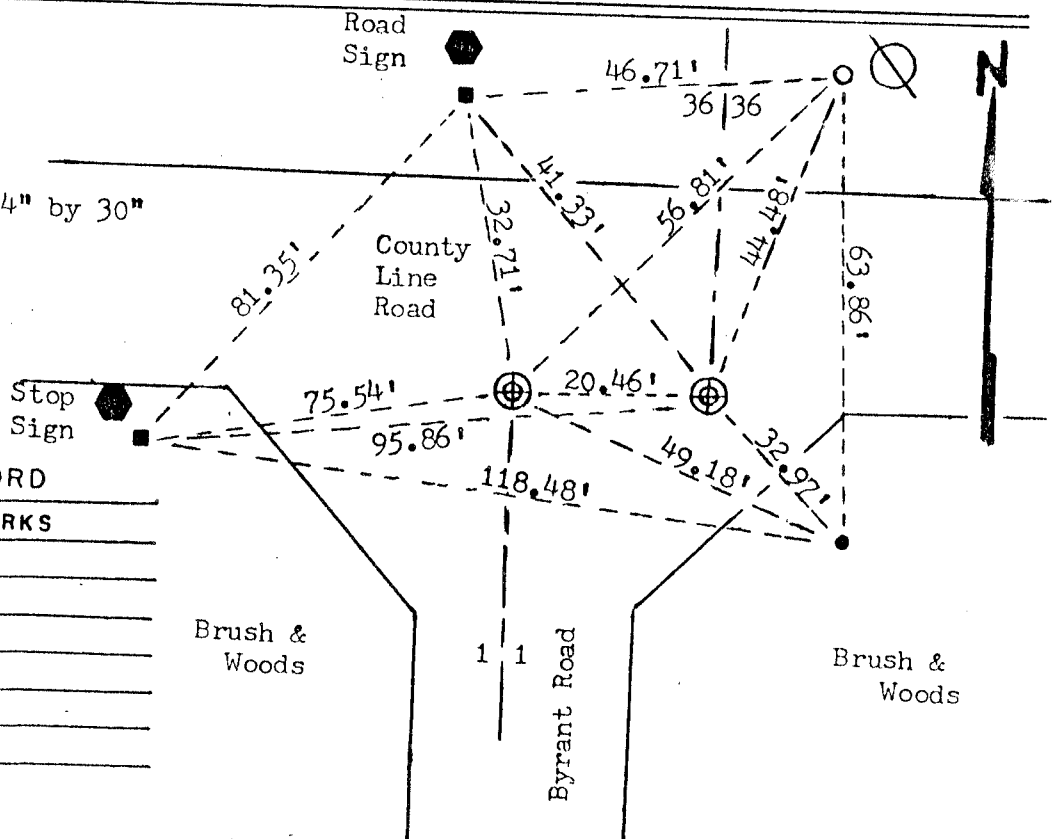


DATA SHOWN HERE ON
 CERTIFIED CORRECT:

Thomas R. Wollin
 REGISTERED LAND SURVEYOR
 DATED 7/20/1988

LOCATION SKETCH

- SQUARE CUT LIMESTONE
- CONCRETE / BRASS CAP
- ALUMINUM MAGNETIZED 4" by 30"
- IRON PIPE 3/4" X 24"
- Steel Bolt 1" sq. top
- Re-rod 1/2" dia.
- FENCE
- UTILITY POLE
- STEEL POST / SIGN



MAINTENANCE RECORD		
DATE	INIT.	REMARKS

FILE IN MILTON A23 (2)