

U.S. PUBLIC LAND SURVEY MONUMENT RECORD

For Public Land Survey Corners In:
T. / N. R. 14 E. 4th P.M.
CORNER CODE INDEX

WI ADMINISTRATIVE CODE A-E 7.08 REQUIREMENT
REV 10/23/2004 USMONREC.DWG

A	1	2	3	4	5	6	7	8	9	10	11	12	13	14	15	16	17	18	19	20	21	22	23	24	25	A
B		6			5				4				3				2				1					B
C																										C
D																										D
E																										E
F																										F
G																										G
H																										H
J																										J
K																										K
L																										L
M																										M
N																										N
O																										O
P																										P
Q																										Q
R																										R
S																										S
T																										T
U																										U
V																										V
W																										W
X																										X
Y																										Y
Z																										Z

1 2 3 4 5 6 7 8 9 10 11 12 13 14 15 16 17 18 19 20 21 22 23 24 25
PLACE MONUMENT SYMBOL AT PROPER LOCATION ON ABOVE INDEX

CLINTON TWP
ROCK COUNTY WI

IF AVAILABLE
ROCK COUNTY COORDINATES PREFERRED

North _____ Elev. _____

East _____

Hor. Datum _____ Vert. Datum _____

LATITUDE _____ ELLIPS. HT. _____

LONGITUDE _____

NAD83(91) _____ NETWORK ADJ. YR _____

GPS (X) _____ TRAVERSE (X) _____

BASED ON THE FOLLOWING CONTROL:

CORNER MONUMENT WITNESS MONUMENT

BEARINGS ARE BASED ON: _____

FIELD BOOK _____ PAGE # _____ SHEET 1 OF 1

SHOW A PLAN VIEW DRAWING DEPICTING THE CORNER MONUMENT AND SURROUNDING PHYSICAL FEATURES, INCLUDING THE EXCAVATION AREA AND DEPTH.

PLANNING & ZONING COMMITTEE ADOPTED THIS FORM ON 12/2/1982

CORNER CODE V-25(2)

RECORD OF U. S. PUBLIC LAND SURVEY CONTROL STATION

U. S. PUBLIC LAND SURVEY CORNER 25|30 T 1 N, R 14/15 E, ROCK/WALWORTH COUNTY, WISCONSIN
36|31

HORIZONTAL CONTROL SURVEY BY: AYRES ASSOCIATES YEAR: 1992
 VERTICAL CONTROL SURVEY BY: SEWRPC YEAR: 2004

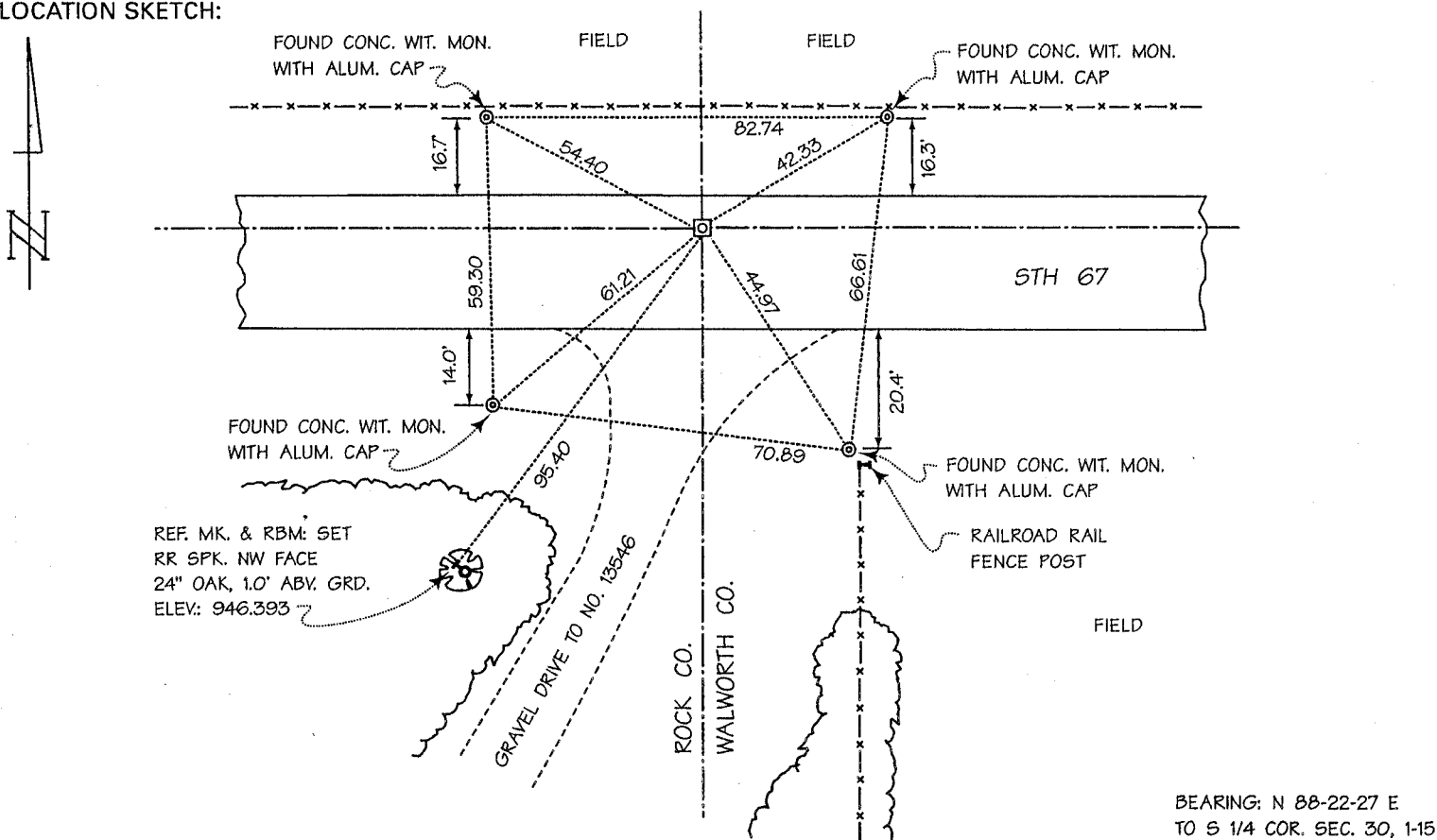
STATE PLANE COORDINATES OF: SECTION CORNER
 NORTH 186,986.34
 EAST 2,329,935.28

ELEVATION OF STATION: 949.240

HORIZONTAL DATUM: WISCONSIN STATE PLANE COORDINATE SYSTEM, SOUTH ZONE
 NORTH AMERICAN DATUM OF 1927

VERTICAL DATUM: NATIONAL GEODETIC VERTICAL DATUM OF 1929 THETA ANGLE: +0-50-26
 CONTROL ACCURACY:
 HORIZONTAL: THIRD ORDER, CLASS I VERTICAL: SECOND ORDER, CLASS II

LOCATION SKETCH:



BEARING: N 88-22-27 E
 TO S 1/4 COR. SEC. 30, 1-15

SURVEYOR'S AFFIDAVIT:

STATE OF WISCONSIN) SS
WALWORTH COUNTY)

As Walworth County Surveyor, I hereby certify that I found a cut limestone monument with Walworth County brass cap as set to mark this corner in September 1998 by Lloyd L. Jensen, S-211, Walworth County Surveyor; replacing a subsurface aluminum monument with Rock County aluminum cap set to mark this corner in October 1980 by Donald A. Barnes, S-1216, Rock County Surveyor; replacing an old, subsurface, triangular shaped cut limestone monument with dimensions of 1.6 feet, 1.2 feet, and 1.3 feet on its sides with its pointed top in a vertical position located 3 feet below the roadway surface then marking this corner; that I referenced the same as shown hereon; and that this record is correct and complete to the best of my knowledge and belief.



DATE OF SURVEY: 25 JUNE 2004 Leland H. Kremlin S - 1960
 REGISTERED LAND SURVEYOR

V-25(2)