

**PUBLIC LAND SURVEY MONUMENT RECORD**

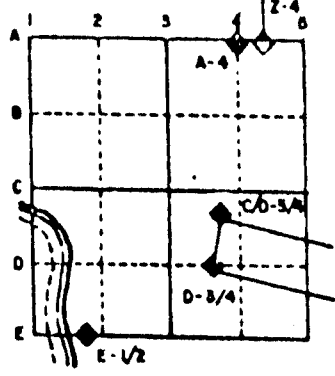
For Public Land Survey Corners in the  
T. \_\_\_ N., R. \_\_\_ E.

**CORNER CODE INDEX**

	1	2	3	4	5	6	7	8	9	10	11	12	13	14	15	16	17	18	19	20	21	22	23	24	25
A																									
B																									
C																									
D																									
E																									
F																									
G																									
H																									
I																									
J																									
K																									
L																									
M																									
N																									
O																									
P																									
Q																									
R																									
S																									
T																									
U																									
V																									
W																									
X																									
Y																									
Z																									

PLACE MONUMENT SYMBOL (◆) AT PROPER LOCATION ON ABOVE INDEX

**EXAMPLE**



CLINTON TWP  
ROCK COUNTY WI

IF AVAILABLE  
STATE PLANE COORDINATES

North (Y) \_\_\_\_\_ Eleve. (Z) \_\_\_\_\_  
 East (X) \_\_\_\_\_ Zone \_\_\_\_\_  
 Hor. Datum \_\_\_\_\_ Vert. Datum \_\_\_\_\_

◆ CORNER MONUMENT

○ WITNESS MONUMENT

BEARINGS ARE BASED ON:

**RECORD OF U. S. PUBLIC LAND SURVEY CONTROL STATION**

U. S. PUBLIC LAND SURVEY CORNER 2530 T 1 N, R 15 E, WALWORTH COUNTY, WIS.

GEODETIC SURVEY BY: AYRES ASSOCIATES YEAR: 1992

STATE PLANE COORDINATES OF: QUARTER SECTION CORNER  
 NORTH 189,627.49  
 EAST 2,329,898.32

ELEVATION OF STATION: 952.873

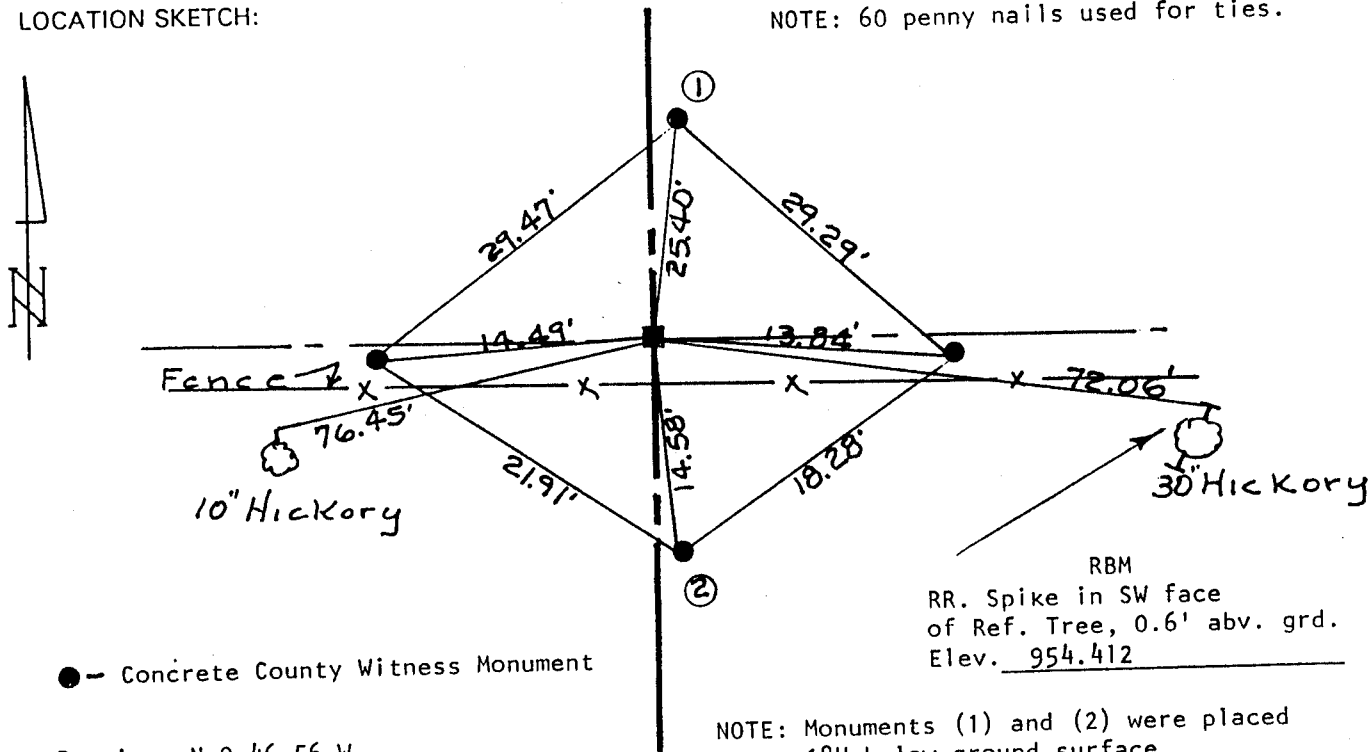
HORIZONTAL DATUM: WISCONSIN STATE PLANE COORDINATE SYSTEM, SOUTH ZONE

VERTICAL DATUM: NATIONAL GEODETIC VERTICAL DATUM OF 1929

CONTROL ACCURACY:  
 HORIZONTAL: THIRD ORDER, CLASS I VERTICAL: SECOND ORDER, CLASS II THETA ANGLE: + 0-50-26

LOCATION SKETCH:

NOTE: 60 penny nails used for ties.



SURVEYOR'S AFFIDAVIT:

STATE OF WISCONSIN)  
Walworth COUNTY) SS

I hereby certify that I searched for the monument and found an aluminum monument with a Rock County aluminum cap, no record of what was found at the corner, it is apparent that the location was determined by single proportion.

DATE OF SURVEY: 5-12-88  
4-13-92

Lloyd R Jensen  
 REGISTERED LAND SURVEYOR

S - 211

A-42

FORM PREPARED BY SOUTHEASTERN WISCONSIN REGIONAL PLANNING COMMISSION