

Paper weight-110# (minimum)

Black nonfading ink required

U.S. PUBLIC LAND SURVEY MONUMENT RECORD

For Public Land Survey Corners In:

WI ADMINISTRATIVE CODE A-E 7.08 REQUIREMENT

T. 3 N. R. 14 E. 4th P.M.

REV 10/23/2004

USMONREC.DWG

CORNER CODE INDEX

	1	2	3	4	5	6	7	8	9	10	11	12	13	14	15	16	17	18	19	20	21	22	23	24	25		
A																											A
B																											B
C																											C
D																											D
E																											E
F																											F
G																											G
H																											H
J																											J
K																											K
L																											L
M																											M
N																											N
O																											O
P																											P
Q																											Q
R																											R
S																											S
T																											T
U																											U
V																											V
W																											W
X																											X
Y																											Y
Z																											Z

Johnstown TWP

ROCK COUNTY WI

IF AVAILABLE
ROCK COUNTY COORDINATES PREFERRED

North _____ Elev. _____

East _____

Hor. Datum _____ Vert. Datum _____

LATITUDE _____ ELLIPS. HT. _____

LONGITUDE _____

NAD83(91) _____ NETWORK ADJ. YR _____

GPS (X) _____ TRAVERSE (X) _____

BASED ON THE FOLLOWING CONTROL:

PLACE MONUMENT SYMBOL AT PROPER LOCATION ON ABOVE INDEX

CORNER MONUMENT WITNESS MONUMENT

BEARINGS ARE BASED ON: ROCK COUNTY PROJECTION

FIELD BOOK _____ PAGE # _____
OR OBSERVATION SHEET _____

SHEET 1 OF 3

SHOW A PLAN VIEW DRAWING DEPICTING THE CORNER MONUMENT AND SURROUNDING PHYSICAL FEATURES, INCLUDING THE EXCAVATION AREA AND DEPTH.

PLANNING & ZONING COMMITTEE ADOPTED THIS FORM ON 12/2/1982

CORNER CODE T-13(1)

J0597 E1/4CORSEC28

(B) Describe any record evidence, monument evidence, occupational evidence, testimonial evidence or any other material evidence you considered, and whether the monument was found or placed.

- 1860 RUGER VOL 1 PG 138 VAR5-12 2635.38 TO SET LIMESTONE 22X8X6 @ CENTER OF SEC 28, VAR5-12 2635.38 FROM CENTER OF SEC 28 TO W 1/4 COR SEC 28. STATES NOTHING ABOUT MON.
- 1871 RUGER FIELD BOOK R53 PAGE 24. HE STATES THE MONUMENT IS A 1 1/2" GAS PIPE SORROUNDED BY 4 HH.
- 1945 SUNNY #2403 STATES NOTHING ABOUT MON. 1,946 TO CENTER OF CTH A.
- 1970 SHIMEALL #2409 272.74 FROM PIN @ CENTER OF CTH A SOUTH 272.74 TO FD 7X7 LIMESTONE MON-FENCE IS 0.5' WEST & 1.5 SOUTH OF AT NE COR OF LAND FORMERLY OWNER ??????. DOES NOT CALL FOR E 1/4 COR SEC 28
- 1982 BARNES VOL 6 PG 285 NO-23-51W 2632.13 TO NW COR SEC 27, N88-31-10W 2641.30 TO CENTER OF SEC 28, N88-30-36W 2640.13 FROM CENTER OF SEC 28 TO W 1/4 COR SEC 28. 5281.43 FROM E 1/4 TO W 1/4 COR SEC 28.
- 1984 BARNES T-13 DUG 5" DEEP HOLE & FD NOTHING. SET COR & REFERENCED IT. THE CORNER WAS RESTORED THROUGH ACCEPTANCE OF OBLITERATED EVIDENCE. THE CORNER IS 0.41' NORTH & 1.18' EAST OF A POINT ESTABLISHED BY SINGLE PROPORTIONATE MEASUREMENT USING RUGER'S 1860 DISTANCE AND THE W 1/4 COR AND THE CENTER OF SEC 28. THIS WAS DONE SO A CORNER ON THE EAST LINE OF THE NE 1/4 OF THE NE 1/4 WOULD BE IN HARMONY. THIS LOCATION IS ALSO MORE IN HARMONY WITH THE OCCUPATION LINES AT THE CORNER AND RUGER'S 1887 DISTANCE TO THE NE COR OF SEC 28.
- 1985 COMBS #13778 ALUM NO-01-40E 33.47 TO PIN. NO-01-40E 1644.30 TO PROPERTY COR.
- 1989 COMBS CSM VOL 14 PG 271 ALUM NO-01-40E 2632.32 TO ALUM @ NE COR SEC 28. N88-05-45W 17.5 TO CENTER OF CTH M R/W.
- 2005 LATHROP CSM VOL 28 PG 247 FD PK. NO-07-22E 2632.14 TO ALUM @ NW COR SEC 27. SO-05-20W 954.68 FROM NW COR SEC 27 TO FD STONE AS SHOWN ON SHIMEALL SURVEY DATED JULY 1970.
- 2011 COMBS #16899 SET PK FROM REF. MONUMENTS. N88-39-24W 2644.40 TO SET R/R @ CENTER OF SEC 28, N88-39-24W 5281.52 TO W 1/4 COR SEC 28. CENTER OF SEC 28 TO N 1/4 COR SEC 28 NO-39-12W 2635.56 & SO-39-12E TO S 1/4 COR SEC 28.

FD PK 1.0' SW OF EAST PVMT EDGE. FD 3 OF 4 REFERENCE BOLTS. E/W FENCE TO THE EAST IS GONE.

C) Was the corner restored through acceptance of (1) an obliterated evidence location, or, (2) a found perpetuated location?

ACCEPTED POSITION AS DETERMINED BY REFERENCE TIES. USING LATHROP'S CSM VOL 28 PG 247 DATA I DETERMINED THE LS IS 0.37' EAST OF A LINE BETWEEN THE E 1/4 COR & NE COR OF SEC 28. HE FD SHIMEALL'S [MAP #2409] PIN @ CENTER OF CTH A. HE MEASURED SOUTH 272.74 TO THE FD 7X7 LIMESTONE MON.

Seal


Emboss
June 11, 2012

SHEET 1 OF 3

CORNER CODE T-13(1)

JO597 E1/4CORSEC28

2012 COUNTY ADJUSTMENT

E 1/4 COR SEC 28 TO NE COR SEC 28	N00-31-48W 2632.61
E 1/4 COR SEC 28 TO SE COR SEC 28	S00-34-38E 2647.62
E 1/4 COR SEC 28 TO W 1/4 COR SEC 28	N88-39-20W 5281.46
NE COR SEC 28 TO SE COR SEC 28	S00-33-13E 5280.23

CORNER IS 1.09' WEST OF A LINE BETWEEN THE NE & SE CORNERS.

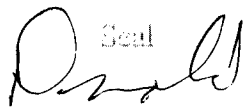
D) Describe any material discrepancy between the location of the corner as restored or reestablished and the location of that corner as previously restored or reestablished by distance and direction. Show the discrepancy on the plan view drawing under (a), above. Show the distances between the corner as previously restored or reestablished and (1) the corner as restored or reestablished, and (2) to at least 4 of the witness monuments shown on the drawing in (a), above.

FD PK IS N41-38E 0.17' OF THE CORNER.

(E) Was the corner reestablished through lost corner proportionate methods? If so, show the method, including the directions and distances to other public land survey corners used as evidence or used for proportioning the corner location.

NO

I, **Donald Barnes**, hereby certify that the corner location as identified by the corner code index was determined by me under my direction and control and that this U.S. Public Land Survey Monument Record is correct and complete to the best of my knowledge and belief.

Seal


SHEET 2 OF 3

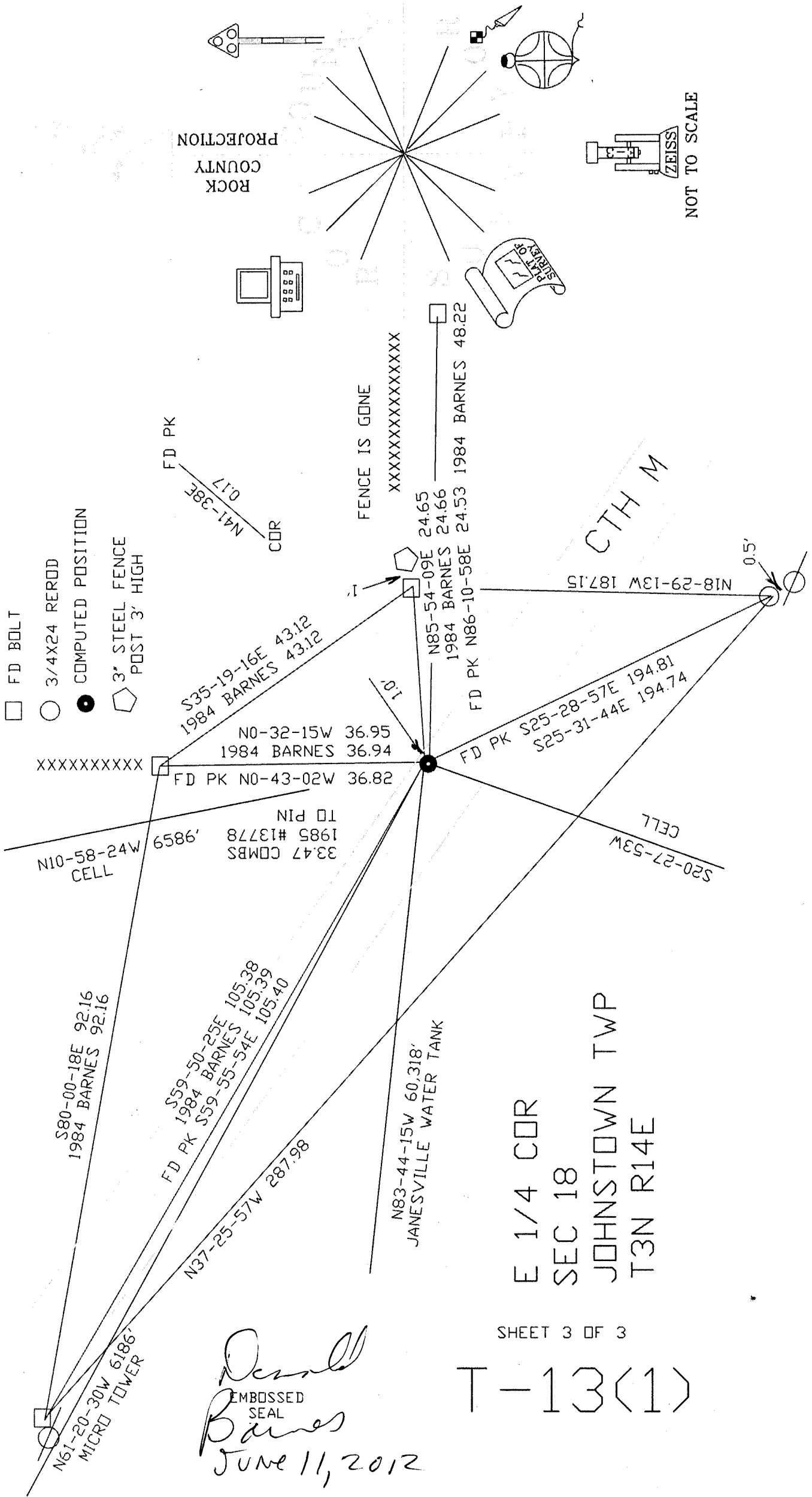
Emboss


JUNE 11, 2012

CORNER CODE T-13(1)

A.E. 7.08 REQUIREMENT

- FD BOLT
- 3/4X24 REROD
- COMPUTED POSITION
- ◡ 3" STEEL FENCE POST 3' HIGH



SHEET 3 OF 3

T-13(1)

Donald Barnes
 EMBOSSED SEAL
 Barnes
 June 11, 2012