

# U.S. PUBLIC LAND SURVEY MONUMENT RECORD

For Public Land Survey Corners In: WI ADMINISTRATIVE CODE A-E 7.08 REQUIREMENT

T. 1 N. - R. 14 E. of the 4th P.M.

CORNER CODE INDEX

CLINTON TWP

ROCK COUNTY WI

(PLACE "◆" SYMBOL AT PROPER PLSS CORNER LOCATION)

	2	3	4	5	6	7	8	9	10	11	12	13	14	15	16	17	18	19	20	21	22	23	24	25		
A																										A
B																										B
C	6																									C
D																										D
E																										E
F																										F
G	7																									G
H																										H
I																										I
J																										J
K																										K
L	18																									L
M																										M
N																										N
O																										O
P	19																									P
Q																										Q
R																										R
S																										S
T	30																									T
U																										U
V																										V
W																										W
X	31																									X
Y																										Y
Z																										Z
	1	2	3	4	5	6	7	8	9	10	11	12	13	14	15	16	17	18	19	20	21	22	23	24	25	

## COORDINATES

(GNSS DERIVED VIA WISCORS)

NORTHING: 205269.37 ELEV:         

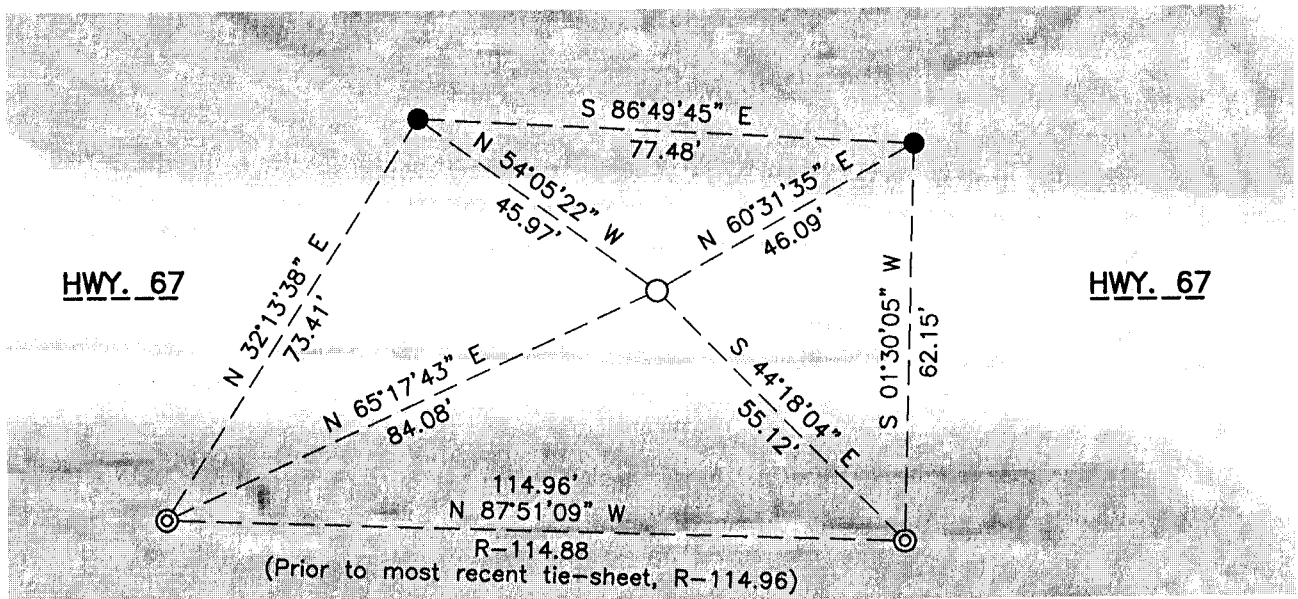
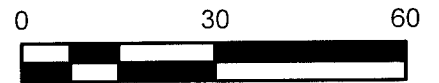
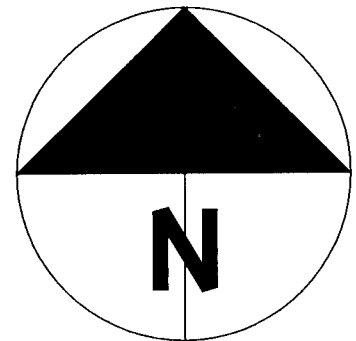
EASTING: 541222.18

Hor. Datum: WCCS-ROCK, (NA2011)

Vertical Datum: NAVD 88

(a) **LEGEND**

- - 5/8" x 24" REBAR SET, (RED CAP W/"PLSS WITNESS")
- - COTTON GIN SPINDLE SET
- ⊙ - IRON PIPE FOUND



**B) Describe any record evidence, monument evidence, occupational evidence, testimonial evidence or any other material evidence you considered, and whether the monument was found or placed.**

In advance of Hwy. 67 resurfacing, (Hwy. 140 – Walworth County line), I set control and surveyed existing monuments, (exposed), and witnesses throughout the project. At this location, I recovered two, (2), witness monuments from a tie sheet, (V-11), prepared by Don Barnes on May 10, 1994. Other witnesses located were gone and/or disturbed. The aluminum monument appears to exist under the pavement based on a metal detector; I did not expose the corner and its condition is unknown. The distance between the two witnesses found does differ from the most recent tie by 0.08' however, I match tie sheets pre-dating the most recent. The corner was calculated based on the most recent tie distances as Mr. Barnes typically occupied section corners and shot tie dimensions directly.

Post construction and witnessed per the sketch, I set a cotton gin spindle at the corner.

**C) Was the corner restored through acceptance of (1) an obliterated evidence location, or, (2) a found perpetuated location?**

Restored through acceptance of found witnesses.

**D) Describe any material discrepancy between the location of the corner as restored or reestablished and the location of that corner as previously restored or reestablished by distance and direction. Show the discrepancy on the plan view drawing under (a), above. Show the distances between the corner as previously restored or reestablished and (1) the corner as restored or reestablished, and (2) to at least 4 of the witness monuments shown on the drawing in (a), above.**

Any discrepancies are noted on the face of the map with the most recently filed tie-sheets distances noted with an "R". Absent the "R" distance to a found monument, assume I match the most recent tie-sheet distance. Bearing discrepancies are not noted.

**(E) Was the corner reestablished through lost corner proportionate methods? If so, show the method, including the directions and distances to other public land survey corners used as evidence or used for proportioning the corner location.**

N/A

I, **Jason R. Houle**, hereby certify that the corner location as identified by the corner code index was determined by me under my direction and control and that this U.S. Public Land Survey Monument Record is correct and complete to the best of my knowledge and belief.

**CORNER CODE: V-11(1)**  
**(A.E. 7.08 REQUIREMENT)**

